

What's New in Assessment and Standards

Iris Jacobson-Special Education DPI
Mike Peacy-Office of Assessment DPI

September 20, 2023



WISCONSIN DEPARTMENT OF
Public Instruction
Jill K. Underly, PhD, State Superintendent

Agenda

- **Review of statewide assessments**
- **Information on Alternate Assessment-DLM**
- **1% Participation Threshold Procedures**
- **Assessment and Instruction Planner**
- **Alternate Academic Achievement Standards**
- **Other Updates and Resources**

Wisconsin Statewide Assessments

Wisconsin Statewide Assessments

Statewide Assessments in WI

- **Overview**
- **Forward Exam**
- **ACT**
- **PreACT Secure**
- **ACCESS / Alt ACCESS**
- **DLM**



The Assessment Web Page

<http://dpi.wi.gov/assessment>

State Assessments

Correspondence

Assessment Information
for Families

DAC Corner

WISCONSIN DEPARTMENT OF Public Instruction

Select Language | Search

OEA
Office of Educational Assessment

ASSESSMENT IN WISCONSIN

Assessment in Wisconsin

Assessment

Staff Directory

Wisconsin State Assessments

- ACCESS for ELLs
- ACT with writing
- Assessment of Reading Readiness
- DLM
- Forward Exam
- NAEP
- Parental Choice Program Assessment
- PreACT Secure
- Private School Testing

Assessment Correspondence

Assessment FAQ

Assessment Forms

Assessment Information for Families

District Assessment Coordinator (DAC) Corner

Student Privacy

Historical Assessments

Wisconsin Student Assessment System

The Wisconsin Student Assessment System (WSAS) is a comprehensive statewide program designed to provide information about what students know in core academic areas and whether they can apply what they know. The WSAS includes:

- The **Wisconsin Forward Exam** at grades 3-8 in English Language Arts (ELA) and Mathematics, at grades 4 and 8 in Science, and 4, 8, and 10 in Social Studies
- Dynamic Learning Maps (DLM)** at grades 3-11 in ELA and Mathematics, at grades 4 and 8-11 in Science, and at grades 4, 8, and 10 in Social Studies,
- PreACT Secure** at grades 9 & 10 in English, Reading, Mathematics, and Science,
- The **ACT with Writing** at grade 11 for Reading, English, Mathematics, Science, and Writing.

The Every Student Succeeds Act (ESSA) requires all states to test all students in English language arts (ELA) and mathematics in grades 3-8 and once in high school. ESSA also requires students be assessed in Science once each grade span (3-6, 7-9, and 10-12 grades). Student performance on these assessments is reported in proficiency categories and used for accountability determination at the school, district and state levels. Wisconsin State statute also requires students to take grade 9 and 10 assessments as well as the social studies test. These tests together create the Wisconsin Student Assessment System.

Wisconsin State Assessment Timelines

- 2022-23 Vendor-Based Reporting Information** - Provides a one-page overview of the 2022-23 spring testing reports available from vendors (i.e., description, where/when available, etc.).
- 2023-24 Wisconsin State Assessment Schedule** - Provides a calendar timeline of when the state assessments are administered.
- 2023-24 State Assessments by Grade** - Provides state assessments in a table by grade and time of year administered.
- 2023-24 Wisconsin State Assessments** - Provides a brief explanation of each

Individual Assessment Web Pages

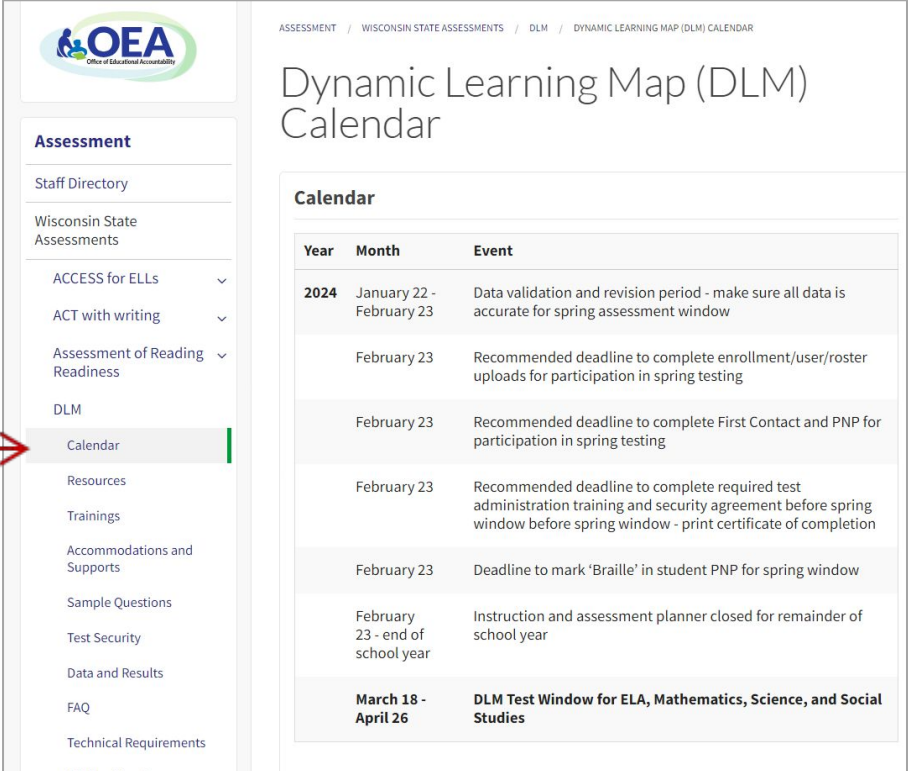
Each assessment has a homepage and almost identical subpages that includes:

- information about that assessment
- a “What’s New” section for that assessment
- specific assessment quick contacts

The screenshot shows the AOE Dynamic Learning Maps (DLM) website. On the left is a navigation menu with the following items: DLM, Calendar, Resources, Trainings, Accommodations and Supports, Sample Questions, Test Security, Data and Results, FAQ, Technical Requirements, 1% Participation, DLM-Wisconsin Web page, and More Options. The main content area is titled "Dynamic Learning Maps (DLM)" and includes an "Overview" section, a "What is a Learning Map?" section, "Student Eligibility Criteria", and "Participation Criteria". A "What's New" section at the bottom left of the main content area contains a "Quick Contacts" box with links for "Dynamic Learning Maps (DLM)", "DLM Information", and "DPI Contacts". A "Mike Peacy" contact is listed for Special Populations. To the right of the main content area is an "Overview" sidebar with a "DYNAMIC LEARNING MAPS" logo and text explaining the assessment's purpose. Below this is a "What is a Learning Map?" section with a map icon and text describing learning maps as networks of sequenced learning targets. At the bottom of the sidebar is a "Student Eligibility Criteria" section with text about determining student eligibility for special education services. A "Quick Contacts" box at the bottom right of the sidebar lists "Dynamic Learning Maps (DLM)", "DLM Wisconsin", "DPI Contacts", and "Mike Peacy" for Special Populations.

Individual Assessment Web Pages

Each assessment has a calendar web page which contains a list of important dates specific to that assessment.



ASSESSMENT / WISCONSIN STATE ASSESSMENTS / DLM / DYNAMIC LEARNING MAP (DLM) CALENDAR

Dynamic Learning Map (DLM) Calendar

Calendar

Year	Month	Event
2024	January 22 - February 23	Data validation and revision period - make sure all data is accurate for spring assessment window
	February 23	Recommended deadline to complete enrollment/user/roster uploads for participation in spring testing
	February 23	Recommended deadline to complete First Contact and PNP for participation in spring testing
	February 23	Recommended deadline to complete required test administration training and security agreement before spring window before spring window - print certificate of completion
	February 23	Deadline to mark 'Braille' in student PNP for spring window
	February 23 - end of school year	Instruction and assessment planner closed for remainder of school year
	March 18 - April 26	DLM Test Window for ELA, Mathematics, Science, and Social Studies

Assessment Correspondence Web Page

The Assessment Correspondence web page archives all information emailed to districts. The main forms of correspondence include:

- DAC Digest
- OSA News Flash.
- Assessment and Accountability Newsletter

OEA
Office of Educational Accountability

ASSESSMENT / ASSESSMENT CORRESPONDENCE

Assessment Correspondence

2023

August

- Email August 23, 2023 -- [DAC Digest](#) (8/23/23)
- Email August 15, 2023 -- [DAC Digest](#) (8/15/23)

July

- Email July 26, 2023 -- [DAC Digest](#) (7/26/23)

June

- Email June 23, 2023 -- [DAC Digest](#) (6/23/23)

May

- Email May 26, 2023 -- [ACT Updates](#) (5/26/23)
- Email May 25, 2023 -- [May Assessment and Accountability Newsletter](#) (5/25/23)
- Email May 24, 2023 -- [DAC Digest](#) (5/24/23)
- Email May 17, 2023 -- [DAC Digest](#) (5/17/23)
- Email May 10, 2023 -- [DAC Digest](#) (5/10/23)
- Email May 3, 2023 -- [DAC Digest](#) (5/3/23)
- Email May 1, 2023 -- [ACT Updates](#) (5/1/23)

Assessment

- Staff Directory
- Wisconsin State Assessments
 - ACCESS for ELLs
 - ACT with writing
 - Assessment of Reading Readiness
 - DLM
 - Forward Exam
 - NAEP
 - Parental Choice Program Assessment
 - PreACT Secure
 - Private School Testing
- Assessment Correspondence**

Assessment and Accountability Newsletter

Office of Educational
Accountability

Newsletter

Accountability

Assessment

More Options

Ask an Accountability
Question

Ask an Assessment Question

OEA Staff Directory

OFFICE OF EDUCATIONAL ACCOUNTABILITY / ASSESSMENT AND ACCOUNTABILITY NEWSLETTER

Assessment and Accountability Newsletter

Subscribe to the Assessment and Accountability Newsletter.

The Assessment and Accountability Newsletter is designed by the Office of Educational Accountability (OEA) specifically to communicate important and relevant information related to assessment and accountability with districts, schools, and educators. Newsletters are produced during peak times throughout the school year: early fall, late fall, mid winter, and late spring. The contents of each newsletter will provide relevant information and resources for that portion of the school year. While the content will change throughout the school year, the format will remain the same.


Newsletter Issues:

- Issue 64, May 2023** Topics included in this issue: Note from the Director, Important Dates, Forward Exam Update, ACT Update, PreACT Secure Update, Dynamic Learning Maps (DLM) Update, ACCESS for ELLs Update, Assessment of Reading Readiness Update, NAEP Update, Effective Use Statewide Assessment Data, Final Joint Federal Notifications, Spring Demographic Snapshot, Resource Inequity Data Tool, , Frequently Asked Questions (FAQs)
- Issue 63, March 2023** Topics included in this issue: Note from the Director, Important Dates, Forward Exam Update, ACT Update, PreACT Secure Update, Dynamic Learning Maps (DLM) Update, ACCESS for ELLs Update, Assessment of Reading Readiness Update, International Assessments Update, Federal Joint Federal Notifications, Spring Demographic Snapshot, Resource Inequity Data Tool, , Frequently Asked Questions (FAQs)
- Issue 62, December 2022** Topics included in this issue: Note from the Director, Important Dates, Forward Exam Update, ACT Update, PreACT Secure Update, Dynamic Learning Maps (DLM) Update, ACCESS for ELLs Update, Assessment of Reading Readiness Update, International Assessments Update, Federal Joint Federal Notifications, Spring Demographic Snapshot, Resource Inequity Data Tool, , Frequently Asked Questions (FAQs)
- Issue 61, September 2022** Topics included in this issue: Note from the Director, Important Dates, Forward Exam Update, ACT Update, PreACT Secure Update, Dynamic Learning Maps (DLM) Update, ACCESS for ELLs Update, Assessment of Reading Readiness Update, International Assessment Update, State Accountability Update, Federal Joint Federal Notifications, Spring Demographic Snapshot, Resource Inequity Data Tool, , Frequently Asked Questions (FAQs)

ASSESSMENT & ACCOUNTABILITY NEWSLETTER
Issue 64, May 2023
WISCONSIN DEPARTMENT OF
Public Instruction

Updates...

Note from the Director

 The Office of Educational Accountability (OEA) would like to thank our dedicated Wisconsin educators for the successful administration of the 2022-23 statewide assessments. We appreciate the time and effort you put into assessing our students and ensuring that they all have the opportunity to demonstrate their knowledge and skills.

The 2022-23 Reader-Based Reporting Information is now available under Wisconsin State Assessment Timelines on the Assessment website. An assessment reports become available in the secure portal, please be aware that DPI publicly releases summary test score data for the Wisconsin Student Assessment System (WASAS) in the fall. As such, DPI strongly recommends that districts coordinate their own public release with the DPI public release. After the secure release of results to districts and prior to the public release, DPI performs additional quality assurance, data validation, and data reduction when needed to protect students privacy. For more information refer to the [2022-24 DAC Dissal](#).

The 2022-24 statewide assessment timelines are:

Calendar...

Important Dates	
Date	Event
May 27	Final 2022-23 Wisconsin Student Reports (SRS), school/district data and reports are available
May 31	International Assessment - TIMSS test window closes (grades 4 and 8)
May 31	International Assessment - IC3 test window closes (grades 3 and 5)
May 31	Forward - Deadline for districts to submit all final data for the Wisconsin Student Report (SRS) (the forward dates and to report of forward of report SRS)
Late May	NAEP - Notification to districts with schools selected to participate in NAEP 2024
Early June	NAEP - Notification to schools selected to participate in NAEP 2024
June 5	The ACT with writing - School district student data file and report reports are available
June 7	ACCESS - Final 2022-23 data available in the WIDA ACCESS English Portal
June 7	Forward - Individual Student Reports (ISR) and summary data available in ERIC Navigator Portal for district personnel access
June 16	Final - Individual Student Reports (ISR) and summary data available in RPE Educator
June 16	Final - Individual Student Reports (ISR) and summary data available in RPE Educator

- The DAC automatically receives every issue of the Assessment and Accountability Newsletter
- All issues are archived at <http://dpi.wi.gov/osa-oea/newsletter>
- Anyone may join the list serve for the newsletter by subscribing at the link provided on the Newsletter web page

Test Dates

Testing Window dates for
2023-24 are available at
<https://dpi.wi.gov/assessment>

2023-24	
Wisconsin State Assessment Schedule	
2023	
Window	Assessment
November 6 - 17	NAEP - Field Trial Reading and Mathematics Grades 4, 8, and 12, and Science Grade 8 (selected schools only)
December 4	ACCESS for ELLs and Alternate ACCESS for ELLs Test Window opens
2024	
Window	Assessment
January 29 - March 8	NAEP - Reading and Mathematics Grades 4, 8, and 12, and Science Grade 8 (selected schools only)
February 2	ACCESS for ELLs and Alternate ACCESS for ELLs Test Window closes
March 12 - 22*	March 12 The ACT with writing Grade 11 Test Window 1 - Paper Administration
	March 12-15 & 18-22 The ACT with writing Grade 11 Test Window 1 - Paper Administration for students testing with Accommodations
	March 12-15 & 18-22 The ACT with writing Grade 11 Test Window 1 - Online Administration/Online Accommodations
<i>*Dates for ACT Test Windows 2 and 3 are available on the ACT Calendar webpage.</i>	
March 18 - April 26	Forward - ELA and Mathematics Grades 3-8, Science Grades 4 and 8, and Social Studies Grades 4, 8, and 10
March 18 - April 26	DLM - ELA and Mathematics Grades 3-11, Science Grades 4 and 8-11, and Social Studies Grades 4, 8, and 10
March 18 - April 26	PreACT Secure Online - English, Reading, Mathematics, and Science Grades 9-10

Testing dates may be subject to change.

Wisconsin Forward Exam



- grades 3-8 in English Language Arts (ELA) and mathematics,
- grades 4 and 8 in Science and,
- grades 4, 8, and 10 in Social Studies.

Forward Exam Accessibility Resources

- **Accessibility Guide**
- **Accessibility Training Video**
- **Multiplication Table**
- **Read Aloud Guidelines**
- **Scribe Guidelines**
- **Translator / Interpreter Guidelines**
- **Word-to-Word Bilingual Dictionary**

Forward Exam Accommodations and Supports webpage:

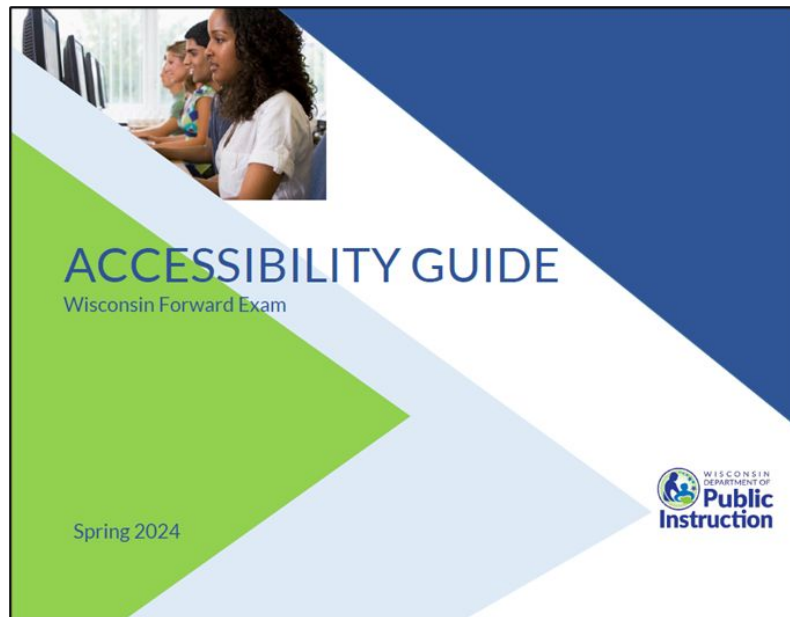
<http://dpi.wi.gov/assessment/forward/accommodations>

Forward Accessibility Guide

Updated!

The Accessibility Guide provides information for educators and related services personnel to use in selecting and administering universal tools, designated supports, and accommodations for students who need them.

Be sure to review the current guide completely with staff.



<https://dpi.wi.gov/assessment/forward/accommodations>

Forward Accessibility Changes



New!

- **Text-to-Speech (TTS)** is now a Universal Tool for all content areas (with the exception of the reading passages in the ELA Reading Session). Students will be able to decide for themselves if they would like to utilize TTS as they test.
- **Closed Caption and Listening Script accommodations** have been removed as the ELA test design has changed (see the August 15, DAC Digest) and the Listening session has been removed.

Forward Accessibility Changes Cont.



New!

- **Stacked Translation (Spanish)** will now have two options for TTS available to assign for students. One version will provide students with TTS for the English content on the form, while the other option will provide students with TTS in Spanish for the Spanish content on the form. Educators must determine which will be most useful to the student prior to assigning Stacked Translation in the Portal.
- **Magnifier Tool** has been increased from 200% to 400%.

ACT with Writing



The ACT® with writing

Wisconsin high school students in grade 11 will take the ACT with writing® which includes Reading, Math, English, Science, Writing.

ACT

- **ACT Accommodation Resources** can be found on [Wisconsin ACT Webpage](#) and the [DPI ACT Accommodations and Supports webpage](#)
- **ACT and DPI communicates important testing information** through program emails and the weekly [DAC Digest](#). It important to read these emails timely and disseminate to appropriate testing staff.

ACT Accommodations

- ACT no longer offers testing materials in English Braille American Edition (EBAE).
- All accommodations and support for the ACT must be requested **and approved** by ACT **prior** to a student testing with supports. Students who test with unapproved accommodations/supports will receive an invalidated score.

ACT Accommodations Cont.

- [Test Accessibility and Accommodations Portal \(TAA\)](#) - ACT's portal for requesting accommodations. - Opens September 11, 2023
- Accommodation/Support request must be entered by the deadline outlined in the Schedule of Events (coming fall 2023)
- 2024 ACT Accessibility Supports Guide has been posted. **Testing staff should review this document thoroughly each year, as changes are made annually**
- Accommodations/TAA training coming fall 2023

PreACT Secure



PreACT Secure is a summative assessment given to 9th and 10th grade students, that is aligned to the ACT and the ACT College and Career Readiness Standards.

PreACT Secure measures what students have learned in the areas of English, Reading, Mathematics, and Science.

PreACT Secure

- **PreACT Secure Accommodation Resources** can be found on [Wisconsin PreACT Secure Webpage](#) and the [DPI PreACT Secure Accommodations and Supports webpage](#)
- Accommodation and support resources coming winter 2023

PreACT Secure cont.

- Accommodations and support for the PreACT Secure are entered directly into the PreACT Secure [PearsonAccessnext](#) test administration portal.
 - Do not require prior approval from ACT
 - Must be entered by deadline outlined in Schedule of Events
- 2024 PreACT Secure Accessibility Supports Guide - coming winter 2023.
- ACT no longer offers testing materials in English Braille American Edition (EBAE).

ACT & PreACT Secure Contact

Questions related to ACT or PreACT Secure
may be directed to:

Nikki Braconier

608-266-1075

nicole.braconier@dpi.wi.gov

ACCESS for ELLs



No changes for ACCESS

[ACCESS for ELLs | WIDA](#)

AltACCESS

What's New for AltACCESS

WIDA has completely revamped the Alt-ACCESS assessment, and it will be administered for the first time this year. If you will be administering it this winter, please pay close attention to the updated training for the new assessment.



AltACCESS Cont.

- Kindergarten is added
- Spans the whole range of proficiency
 - DPI will set exit criteria in fall 2024
- Standard setting in summer 2024
 - Score reports will be delayed until Fall of 2024

Alternate Assessment-DLM



DYNAMIC[®]
LEARNING MAPS

New for DLM

- DLM has an easier path to access the DLM training site
- [Educator Portal](#) has a new look
- New training on [“How to Interpret and Use Score Reports”](#)
- First Contact Surveys have been revised

What Should Be Done Now

- Add users to Educator Portal
- Create Rosters
- Teachers can begin their training
- Teachers can complete:
 - First Contact Surveys and
 - Personal Needs and Preferences can be completed
- Instruction and Assessment Planner can be accessed

What Can be Done During Testing



Test observations using an app called [KITE Collector](#)

Monitor test administration using the “Test Administration Monitoring Report



Role: State Assessment Administra... W

SETTINGS ▾ MANAGE TESTS ▾ **REPORTS ▾** DASHBOARD TRAINING

Student Information **Test Administration and Monitoring** Data Management

Data Extracts

Note: Data extracts may include **Personally Identifiable Information (PII)**, take

Extract	Description
DLM On-Demand Exited Students File	List of students who were exited anytime during the current year's assessments.
DLM Test Administration Monitoring	Testlets assigned, in progress, and completed by subject, and student.

DLM Score Reports

PDF student reports through Educator Portal

- Wisconsin Summary report
- Performance Profile-helpful for IEP meetings to further explain the Summary Report with can-do statements
- Learning Profile-helpful for curriculum planning
- Be sure teachers have access to Score Reports

Questions/Thoughts



All Things Alternate

Alternate Assessment

Alternate Assessment Requirement(ESSA)

1. With the reauthorization of [ESSA](#) in 2015, states are required to define and establish criteria on identifying students with the most significant cognitive disabilities:
2. Alternate standards and assessment is only for students with the most significant cognitive disabilities.
3. States must ensure that no more than 1.0 percent of assessed students in the state take alternate assessments.

Wisconsin Definition

Determine alternate assessment based on

- State Definition
- Sample Special Education Forms: I-7-A
- **IEP Team Discussion and Decision**

Suggestions for Providing Evidence for I-7A

First Section:

- Cognitive functioning
- Adaptive behavior functioning
- Accommodations/Modifications
- Instruction/Achievement

Second Section:

- How long instruction is aligned to alternate standards
- Review of DLM scores

Provide Evidence for I-7A cont.

Third Section

- **Share difference in standards/expectations**
- **How you will measure achievement**
grading, earning credits, report cards
- **Explain district policy on graduation and type of diploma**

Evidence for Section Three

**Document that you discussed and provided
Resources for Families:**

[Parent Guide on Essential Elements](#)

[DLM Assessment Brochure](#)



IEP Team Meeting



- **Careful consideration**
 - Instruction and standards drive the decision
 - All subject areas
- **Make an informed decision**
 - using information from previous evaluations
 - presume competence
 - error on the least dangerous assumption

Not for all students with Intellectual Disabilities

Students with Intellectual Disabilities can participate in general education assessments with

Accommodations:

- **in and access to the general education curriculum**
- **and supports for districtwide testing**
- **and state testing**

Assessment for Everyone



- **Most students** with IEPs take the same statewide assessments as their peers without IEP
- **Some students** with IEPs take the same statewide assessments as their peers without IEP, with accommodations. These accommodations are provided and used during instruction
- **Very few students** with IEPs take alternate assessments, which are based on grade-level alternate academic achievement standards. **Less than 1% statewide**

Opting Out

- [Assessment FAQs](#)
- 95% participation of all and of students with disabilities
- [NCEO Tool Kit on Participation](#)
- [DLM Student does not respond entry](#)

Time for Sharing or Questions



1% Participation Threshold Procedures

1%

**Participation Threshold
Procedures**

1% Participation Threshold

Less than 1%
Statewide
on
Alternate
Assessment



1% Participation Threshold



ESSA

For each federally required subject for which assessments are administered, the total number of students assessed in that subject using an alternate assessment aligned with alternate academic achievement standards may not exceed 1.0 percent of the total number of students in the state who are assessed in that subject.

Test Participation Statewide

2016-17 to 2021-22 Participation - Statewide				
School Year	Content Area	Percent participation of all students	Percent participation for students with disabilities	Percentage of Participation in Alternate Assessment
2016-17	English Language Arts	98.3	96.3	1.2
	Mathematics	98.4	96.4	1.2
	Science	97.6	94.5	1.2
2017-18	English Language Arts	98	95.3	1.0
	Mathematics	98.1	95.4	1.0
	Science	97.1	93.1	1.0
2018-19	English Language Arts	98	95.1	0.9
	Mathematics	98	95.1	0.9
	Science	97.1	92.6	1.0
2019-20**	English Language Arts	98	95.1	0.9
	Mathematics	98	95.1	0.9
	Science	97.1	92.6	0.4
2020-21***	English Language Arts	86.8	80.1	0.8
	Mathematics	86.8	79.9	0.8
	Science	86.2	77.2	0.8
2021-22	English Language Arts	95.8	91.3	0.8
	Mathematics	96	91.3	0.8
	Science	94.3	87.4	0.8
2022-23	English Language Arts	96.3	92.4	0.9
	Mathematics	96.5	92.4	0.8
	Science	94.9	88.9	0.9

Districts Exceeding the 1% Threshold

A State must—

(ii) Require that an LEA submit information justifying the need of the LEA to assess more than 1.0 percent of its assessed students in any such subject with such an alternate assessment;

(iii) Provide appropriate oversight, as determined by the State, of an LEA that is required to submit information to the State; and

[34 CFR Part 200.6\(c\)\(3\)](#)

Districts Exceeding 1% cont.

iv) Make the information submitted by an LEA under [paragraph \(c\)\(3\)\(ii\)](#) of this section publicly available, provided that such information does not reveal personally identifiable information about an individual student.

[34 CFR Part 200.6\(c\)\(3\)](#)

Districts Exceeding 1% Participation Threshold

Districts must verify students taking the alternate assessment (DLM) are indeed student with the most significant cognitive disabilities.

Notification Letter

Districts exceeding the 1% cap

- Receive a notification email mid to end October
 - directing to WISEGrants for your districts data
- Posted on DPI website sometime in October
<https://dpi.wi.gov/assessment/dlm/1-percent-participation>

Subjects and Grades in 1% Calculation

Assessment Subject Area	Wisconsin Statewide Assessments	Assessments 1% calculation
ELA	Grades 3-11	Grades 3-8 and 11
Math	Grades 3-11	Grades 3-8 and 11
Science	Grades 4, and 8-11	Grades 4, 8, and 11
Social Studies	Grades 4, 8, and 10	none

Justification Process

Districts exceeding the 1% cap

- Districts superintendents must submit assurances and justifications to DPI via online application due in November.
- Justifications are to be made available to the public
- Directions on web page: [One Percent \(1%\) Participation Threshold](#)
- Contact iris.jacobson@dpi.wi.gov with any questions.

Questions Anyone?



Assessment and Instruction Planner

Assessment and Instruction Planner

Instruction and Assessment Planner



Logged in as Michael Peacy, [Sign Out](#)

Role: State Assessment Administra... ▾

Organization: Wisconsin ▾

Assessment Program: DLM ▾

- Home
- SETTINGS ▾
- MANAGE TESTS ▾
- REPORTS ▾
- DASHBOARD
- HELP

- TEST MANAGEMENT
- INSTRUCTION AND ASSESSMENT PLANNER
- PROJECTED TESTING



MY PROFILE



QUICK LINKS

- Students
- Rosters
- Monitor Session
- Extracts

Instruction and Assessment Planner



Logged in as Michael Peacy  [Si](#)

Role:

State Assessment Administra...

Organization:

Wisconsin

Assessment Program:

DLM



SETTINGS ▾

MANAGE TESTS ▾

REPORTS ▾

DASHBOARD

TRAINING





HELP



My Profile



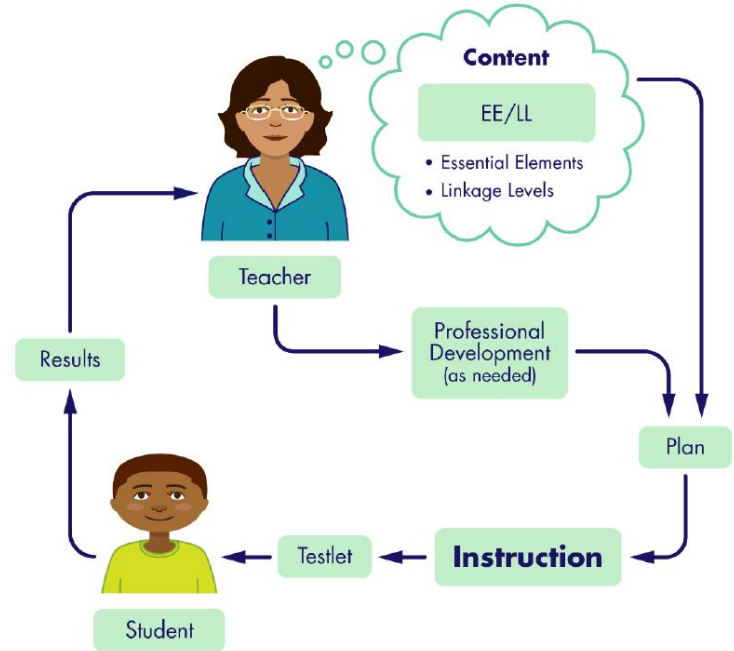
Quick Links

-  Students
-  Rosters
-  Monitor Session
-  Extracts

Instruction and Assessment Planner

Available NOW

computer-delivered alternate assessments that are intended to be integrated with classroom instruction throughout the school year.



Instructionally embedded assessments reinforce the primacy of instruction

Instructionally Embedded Assessment

- **Optional and available to all districts**
- **Teachers selected Essential Element to be assessed**
 - Choose student, subject, EE, linkage level
- **Administer Assessment in Fall and Spring and end of year**
 - Assesses only on the selected EE's
 - Test year end as entire test.

What we can do NOW

1. Review with staff DLM score reports from 2023
2. Update user list
 - add new staff
 - remove staff no longer needing access
3. Create Rosters
4. Test Administrator training is available
5. First Contact Surveys and Personal Needs and Preferences Profiles
6. Use the Instruction and Assessment Planner

What are you thinking about?



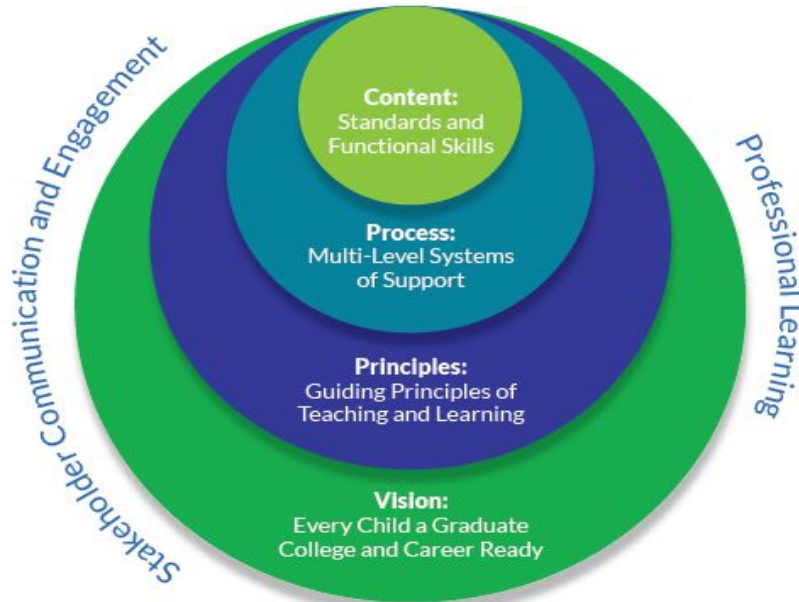
Alternate Academic Achievement Standards

**Alternate Academic
Achievement
Standards**

Statewide Standards and Competencies

Wisconsin
Academic
Standards

Alternate
Academic
Achievement
Standards
(Essential Elements)



Early
Learning
Standards
(WMELS)

Social
Emotional
Learning
Competencies

Essential Elements



Wisconsin Alternate Academic Achievement Standards

Mathematics in Wisconsin

Wisconsin Standards for Mathematics

WISCONSIN VISION FOR MATHEMATICS

Mathematics is a human activity of experiencing, interacting with, and relating to the world.



Every student is a knower and doer of mathematics.



Wondering, reasoning, and understanding are at the heart of mathematics.



Developing positive dispositions towards mathematics cultivates self-efficacy and lifelong interactions with mathematics.



Mathematics provides a lens for reflecting upon and appreciating the beauty in everyday practices in families, communities, and the world.

Questions/Comments



Other Updates and Resources

Other Updates and Resources



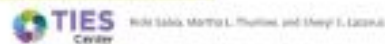
Taking the Alternate Assessment Does
NOT Mean Education in a Separate Setting!



Taking the Alternate
Assessment Does
NOT
Mean Education in a
Separate Setting!



The General Education Curriculum—Not an
Alternate Curriculum!



The General Education Curriculum
Not an Alternate Curriculum!
(TIES Brief #5)

More on Best Practices

WCASS Tomorrow

**Supporting Best Practices for
Students with the Most Significant Cognitive Disabilities**

September 21st 10:15-11:30

BEST PRACTICES FOR STUDENTS WITH SIGNIFICANT COGNITIVE DISABILITIES

This Long Awaited Workshop Includes:

- **DLM Assessment Administration training**
- **Increased understanding of best practices of:**
 - **Instruction**
 - **IEP writing**
 - **Progress monitoring**
- **Access to Instructional Resources**



Click here for more information.

Coming Soon



- New additional Science EE's
- Science workgroups
- [Opportunities to participate in DLM work](#)

SWiFT



NATIONAL CENTER
on Inclusion Toward
Rightful Presence

National Center on Inclusion Toward Rightful Presence

New federal awards to SWIFT Education Center will fund projects that move schools from inclusion to rightful presence

Partners announced for KU initiative to move toward rightful presence in regular education classrooms

Thoughts/Comments/Questions



Thank You and Contact Information

Iris Jacobson

Special Education Team

iris.jacobson@dpi.wi.gov

(608) 264-9557

Michael Peacy

Office of Student Assessment

michael.peacy@dip.wi.gov

(608) 267-1288