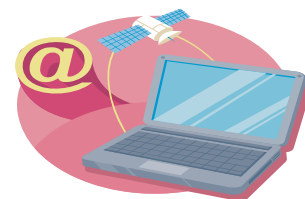


**STANDARDS-BASED**  
**TEST ITEM WRITING AND**  
**WIDA TEACHER COLLABORATION**  
**JAN 4 – MAR 19, 2010**

**ESL and general education teachers are invited to enroll as partners in the online WIDA Item Writing Course and learn to prepare standards-based language proficiency assessment tasks for ACCESS for ELLs®.**



- Learn about the theory and practice of language testing
- Examine the broad notions of test validity and reliability
- Gain practice using the WIDA Standards for assessment purposes
- Create standards-based test items targeting specific proficiency levels
- Discuss ELL instruction and assessment issues with peers across the WIDA states through online discussion boards and chats
- Help ensure that ACCESS for ELLs® test items are linked to classroom practice and curriculum across WIDA states

**Course Information:**

Institutional Host	Hosted by the University of Wisconsin, Oshkosh Delivered by the Center for Applied Linguistics (CAL)
Credit	3 UW credits (transferable) and/or 40 CEUs
Duration	Jan 4 – Mar 19, 2010
Tuition Cost	Paid through the WIDA Consortium
Enrollment Options	Solo enrollment: complete assignments individually “ESL-Gen. Ed. Teacher Pair” enrollment: join the course with a teacher at your school and complete all assignments together
When to Apply	Applications will be available <b>October 1 – October 30, 2009.</b>
How to Apply	Apply online: <a href="http://www.wida.us/itemwriting">www.wida.us/itemwriting</a> Each member of a Teacher Pair must complete a separate application. CAL submits nominees’ applications to SEAs for approval. All applicants will be notified by December 8, 2009. Space is limited and a waitlist will be available if needed.

**Teachers from past courses have this to say:**

*"I would recommend this course because I think it taught all of us about the specific needs for ELL students. But also, how to keep the content standards in mind- FOR ALL STUDENTS!"*

*"It is a must for all ELL and Bilingual teachers as well as any teacher that receives mainstreamed students from ELL classes."*

*"I would recommend this course. I think it gives teachers great insight into ACCESS and a new view and understanding of the assessment. It also provides reminders of how to assess ESL students in the classroom and how to differentiate language and vocabulary for the students depending on the level."*

*"It increases awareness of the WIDA standards and how important academic language is to developing English language proficiency."*

---

**Quick Facts**

- Participants may be contacted following the course to consult for CAL as paid item writers.
- The ESL/Bilingual and general education "teacher-pair" model was introduced in 2008 and continues to be a success!
  - Nearly half the class consisted of pairs.
  - Collaborating was seen as a positive experience.
- Participants came from all of these WIDA states:

Alabama	New Jersey
District of Columbia	Pennsylvania
Illinois	South Dakota
Maine	Virginia
North Carolina	Wisconsin
North Dakota	

**Questions? Interested in participating? Contact:**

Jennifer Christenson  
Associate Manager for WIDA Test Development  
jchristenson@cal.org 202-362-0700

*or*

Michele Kawood  
Language Testing Specialist  
mkawood@cal.org 202-362-0700

