



Schools

There are 425 school districts in Wisconsin:

K-12	369
K-8	46
UHS	10

These districts are made up of 2190 public schools:

High Schools	542
Junior High Schools	30
Middle Schools	333
Elementary Schools	1244
Combined Elementary/Secondary	41

Wisconsin also has 206 district charter schools:

High Schools	75
Middle Schools	23
Elementary Schools	57
Combined Elementary/Secondary	54

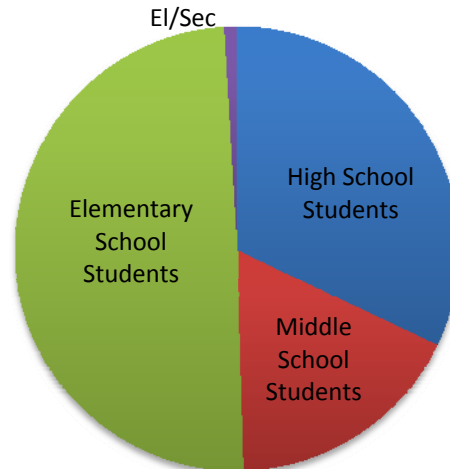
And 17 non-instrumentality (2R) charter schools:

High Schools	2
Middle Schools	0
Elementary Schools	3
Combined Elementary/Secondary	12

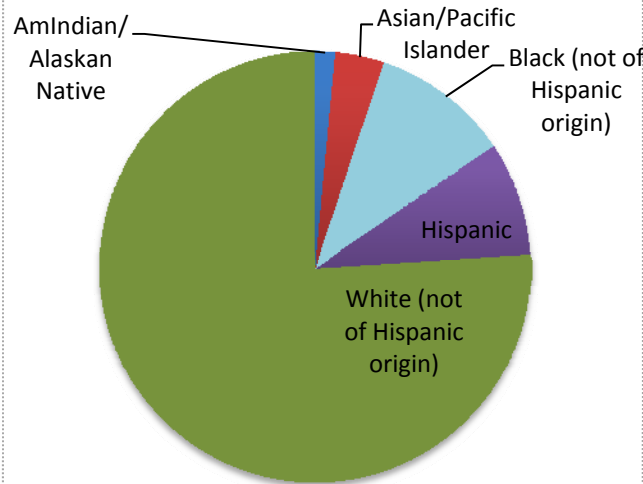
School count data source: EDSTIX_AGENCY, 2009-10 (02.24.11)
 Charter schools: <http://dpi.wi.gov/sms/csindex.html>

Enrollment

Enrollment (2009-10): 871,262 students



Demographics (2009-10)



Students with disabilities	14.1
Economically disadvantaged students	37.2
English language learners	5.7

For more information about student demographics:
<http://dpi.wi.gov/sig/index.html>

Educators (2009-10)

Number of teachers statewide 60,681

% of educators with emergency licenses or provisional credentials	1.4%
% of teachers with masters degrees or higher	52.8%
% teachers who are highly qualified	99.0%
% core classes taught by teachers <u>not</u> highly qualified statewide	1.4%
In high poverty schools	3.58%
In low poverty schools	0.48%

For more information on the qualifications of educators in Wisconsin, visit: <http://dpi.wi.gov/sig/index.html> and <http://dpi.wi.gov/esea/pdf/cspr0910i.pdf> (p 43 , 46)

Wisconsin Education Profile 2009-10

Accountability (2009-10)

Number of Schools Making AYP	% of Schools Making AYP	Number of Districts Making AYP	% of Districts Making AYP
1984	93.40%	421	99.10%

For a list of school and district AYP status:
<http://dpi.wi.gov/esea/pdf/cspr0910i.pdf>

Number and % of Schools Identified for Improvement		Number and % of Districts Identified for Improvement	
89	4.20%	2	0.47%

For a list of schools and districts identified for improvement:
<http://www2.dpi.state.wi.us/sifi/default.asp>

Graduation (2008-09)*

Student Group	% Graduated
State Average	89.4%
American Indian/Alaskan Native	76.3%
Asian/Pacific Islander	90.3%
Black	66.4%
Hispanic	76.7%
White	93.4%
Students with Disabilities	79.3%
Students without Disabilities	90.7%
Economically Disadvantaged	80.3%
Not Economically Disadvantaged	91.9%
Limited English Proficient	79.1%
English Proficient	89.7%
Female	91.5%
Male	87.4%

* Percent of students who received a regular diploma. For more information about graduation in Wisconsin:
<http://dpi.wi.gov/sig/index.html>

National Assessment of Educational Progress (NAEP) 2008-09 Results

Grade 4 Mathematics		NAEP-Below Basic %	NAEP-Basic %	NAEP-Proficient %	NAEP-Advanced %
All Students	WI	15	40	37	8
	Nation	19	43	33	6
American Indian/Alaskan Native	WI	29	50	20	1
	Nation	32	45	21	2
Asian/Pacific Islander	WI	21	40	27	12
	Nation	9	31	43	18
Black Not Hispanic	WI	45	43	11	0
	Nation	37	48	15	1
Hispanic	WI	29	50	20	1
	Nation	30	49	20	1
White	WI	9	38	44	9
	Nation	10	40	42	8
Economically Disadvantaged	WI	27	49	22	2
	Nation	29	49	20	1
Students with Disabilities	WI	40	43	16	2
	Nation	41	40	17	2
English Language Learners	WI	34	51	14	1
	Nation	43	45	11	1

Participation Rates		
Students with Disabilities	WI	86%
	Nation	84%
English Language Learners	WI	90%
	Nation	94%

Grade 8 Mathematics		NAEP-Below Basic %	NAEP-Basic %	NAEP-Proficient %	NAEP-Advanced %
All Students	WI	21	40	31	8
	Nation	29	39	25	7
American Indian/Alaskan Native	WI	‡	‡	‡	‡
	Nation	43	37	16	3
Asian/Pacific Islander	WI	18	42	33	7
	Nation	16	31	33	20
Black Not Hispanic	WI	62	28	9	2
	Nation	51	37	11	1
Hispanic	WI	44	36	17	3
	Nation	44	39	15	2
White	WI	14	41	35	10
	Nation	18	40	32	10
Economically Disadvantaged	WI	40	40	18	2
	Nation	43	40	15	2
Students with Disabilities	WI	55	35	9	1
	Nation	64	27	8	1
English Language Learners	WI	55	36	9	0
	Nation	72	23	4	1

‡ Reporting standards not met.

Participation Rates		
Students with Disabilities	WI	84%
	Nation	78%
English Language Learners	WI	85%
	Nation	92%

Grade 4 Reading		NAEP-Below Basic %	NAEP-Basic %	NAEP-Proficient %	NAEP-Advanced %
All Students	WI	30	35	27	8
	Nation	34	34	24	7
American Indian/Alaskan Native	WI	‡	‡	‡	‡
	Nation	49	31	16	4
Asian/Pacific Islander	WI	29	38	28	5
	Nation	24	32	30	14
Black Not Hispanic	WI	65	24	9	2
	Nation	54	32	12	2
Hispanic	WI	50	33	14	2
	Nation	51	32	14	3
White	WI	23	36	31	10
	Nation	23	36	31	10
Economically Disadvantaged	WI	49	33	15	3
	Nation	50	33	14	2
Students with Disabilities	WI	63	23	11	3
	Nation	64	23	10	2
English Language Learners	WI	58	32	9	1
	Nation	70	23	6	1

‡ Reporting standards not met.

Participation Rates		
Students with Disabilities	WI	69%
	Nation	66%
English Language Learners	WI	74%
	Nation	80%

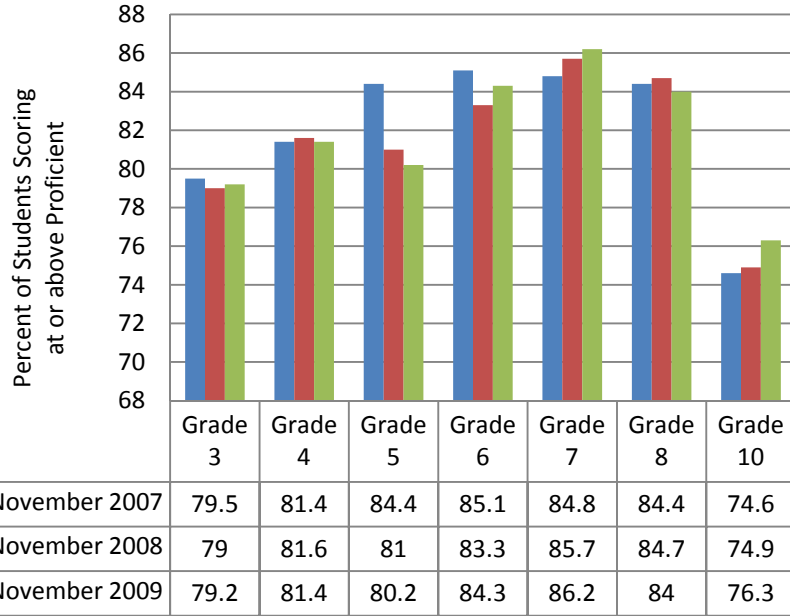
Grade 8 Reading		NAEP-Below Basic %	NAEP-Basic %	NAEP-Proficient %	NAEP-Advanced %
All Students	WI	24	43	31	3
	Nation	27	43	27	2
American Indian/Alaskan Native	WI	‡	‡	‡	‡
	Nation	42	39	17	2
Asian/Pacific Islander	WI	28	46	22	5
	Nation	21	39	35	5
Black Not Hispanic	WI	60	32	7	1
	Nation	46	42	11	0
Hispanic	WI	42	42	16	1
	Nation	43	43	14	1
White	WI	18	44	35	3
	Nation	17	44	35	3
Economically Disadvantaged	WI	43	41	15	1
	Nation	42	43	15	1
Students with Disabilities	WI	73	24	3	0
	Nation	66	27	7	0
English Language Learners	WI	46	43	11	0
	Nation	71	25	4	0

‡ Reporting standards not met.

Participation Rates		
Students with Disabilities	WI	59%
	Nation	66%
English Language Learners	WI	59%
	Nation	77%

WI Student Assessment System (WSAS) 2009 Results by racial/ethnic group

Wisconsin Student Assessment System: Reading



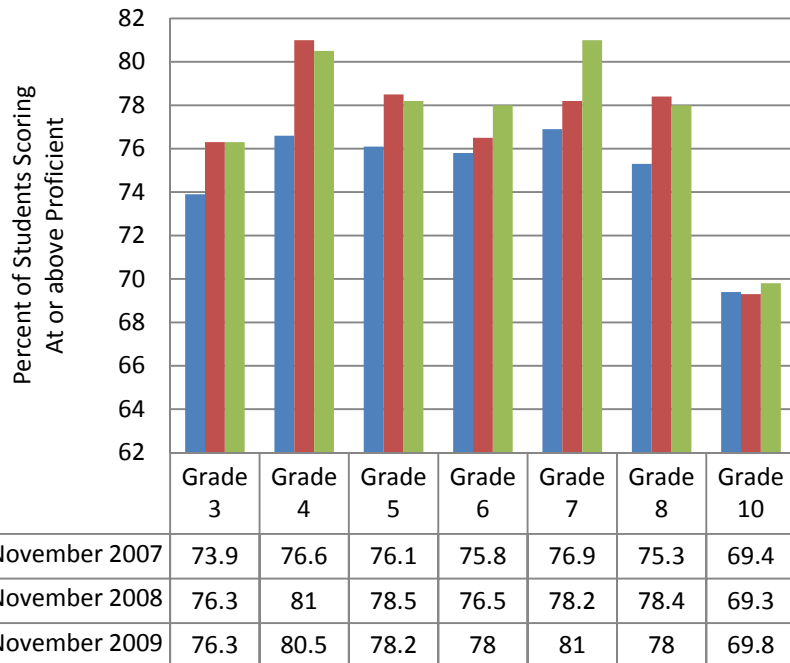
Reading

Grade 3				
Racial/Ethnic Group	% Minimal	% Basic	% Proficient	% Advanced
American Indian/Alaskan Native	7	21	42	29
Asian/Pacific Islander	5	18	38	37
Black	13	29	40	18
Hispanic	8	26	42	21
White	4	11	35	50
Grade 4				
American Indian/Alaskan Native	9	20	43	27
Asian/Pacific Islander	6	16	42	35
Black	14	27	42	16
Hispanic	9	23	46	21
White	3	10	37	50
Grade 5				
American Indian/Alaskan Native	9	21	48	22
Asian/Pacific Islander	5	20	42	31
Black	15	28	43	14
Hispanic	10	24	46	19
White	4	11	42	44

Mathematics

Grade 3				
Racial/Ethnic Group	% Minimal	% Basic	% Proficient	% Advanced
American Indian/Alaskan Native	22	12	43	22
Asian/Pacific Islander	14	10	39	38
Black	40	14	34	12
Hispanic	25	14	43	18
White	10	7	39	44
Grade 4				
American Indian/Alaskan Native	19	14	46	20
Asian/Pacific Islander	10	10	39	40
Black	32	15	39	14
Hispanic	18	14	46	22
White	7	7	39	47
Grade 5				
American Indian/Alaskan Native	24	12	39	26
Asian/Pacific Islander	11	9	33	48
Black	35	14	33	18
Hispanic	22	13	38	27
White	9	7	32	52

Wisconsin Student Assessment System: Mathematics



Grade 6				
Racial/Ethnic Group	% Minimal	% Basic	% Proficient	% Advanced
American Indian/Alaskan Native	8	16	48	28
Asian/Pacific Islander	5	14	44	35
Black	15	23	45	17
Hispanic	9	18	49	23
White	3	8	37	52
Grade 7				
American Indian/Alaskan Native	7	14	46	33
Asian/Pacific Islander	5	12	43	39
Black	15	20	46	19
Hispanic	9	15	47	27
White	3	6	34	57
Grade 8				
American Indian/Alaskan Native	11	16	48	25
Asian/Pacific Islander	7	13	44	35
Black	16	21	47	15
Hispanic	10	17	49	22
White	4	8	43	46
Grade 10				
American Indian/Alaskan Native	16	19	34	29
Asian/Pacific Islander	14	20	31	34
Black	29	26	26	16
Hispanic	20	22	30	25
White	5	11	29	54

Grade 6				
Racial/Ethnic Group	% Minimal	% Basic	% Proficient	% Advanced
American Indian/Alaskan Native	18	18	44	20
Asian/Pacific Islander	10	11	40	40
Black	31	20	37	12
Hispanic	19	17	45	19
White	8	8	41	43
Grade 7				
American Indian/Alaskan Native	12	18	50	21
Asian/Pacific Islander	7	12	44	38
Black	27	21	41	10
Hispanic	14	18	49	18
White	5	8	45	42
Grade 8				
American Indian/Alaskan Native	15	20	51	13
Asian/Pacific Islander	8	11	48	33
Black	26	25	40	7
Hispanic	16	22	50	13
White	6	11	49	34
Grade 10				
American Indian/Alaskan Native	25	21	44	8
Asian/Pacific Islander	15	16	49	20
Black	47	21	25	3
Hispanic	28	24	39	7
White	9	13	51	27

Note: All numbers rounded to nearest whole number

WSAS Results by Subgroups: Reading (2009-10)

GRADE 3						
Disability Status	% Minimal	% Basic	% Proficient	% Advanced	% Not Tested	
Students with Disabilities	20	31	30	18	1	
Students without Disabilities	3	13	37	47	1	
Economic Status						
Economically Disadvantaged	9	24	40	26	1	
Not Economically Disadvantaged	2	9	33	55	0	
English Proficiency						
Limited English Proficient	9	29	42	15	5	
English Proficient	5	14	36	46	0	
Migrant Status						
Migrant	3	28	42	22	6	
Non-migrant	5	15	36	43	1	
Gender						
Female	4	14	36	46	0	
Male	6	16	36	40	1	

GRADE 5						
Disability Status	% Minimal	% Basic	% Proficient	% Advanced	% Not Tested	
Students with Disabilities	24	31	32	13	1	
Students without Disabilities	2	11	44	42	0	
Economic Status						
Economically Disadvantaged	10	23	46	21	1	
Not Economically Disadvantaged	2	8	40	49	0	
English Proficiency						
Limited English Proficient	12	31	45	8	4	
English Proficient	5	13	42	40	0	
Migrant Status						
Migrant	7	25	50	18	0	
Non-migrant	5	14	43	38	0	
Gender						
Female	4	13	42	41	0	
Male	6	16	43	35	1	

GRADE 4						
Disability Status	% Minimal	% Basic	% Proficient	% Advanced	% Not Tested	
Students with Disabilities	21	29	33	16	1	
Students without Disabilities	2	11	39	47	0	
Economic Status						
Economically Disadvantaged	9	21	44	25	1	
Not Economically Disadvantaged	2	8	35	55	0	
English Proficiency						
Limited English Proficient	10	28	47	12	3	
English Proficient	5	12	38	45	0	
Migrant Status						
Migrant	18	28	33	13	8	
Non-migrant	5	13	39	43	0	
Gender						
Female	4	13	39	44	0	
Male	6	14	38	42	1	

GRADE 6						
Disability Status	% Minimal	% Basic	% Proficient	% Advanced	% Not Tested	
Students with Disabilities	23	26	37	13	1	
Students without Disabilities	2	8	40	51	0	
Economic Status						
Economically Disadvantaged	9	17	46	27	1	
Not Economically Disadvantaged	2	6	35	57	0	
English Proficiency						
Limited English Proficient	12	24	51	9	3	
English Proficient	5	10	38	47	0	
Migrant Status						
Migrant	5	25	40	25	5	
Non-migrant	5	10	39	45	0	
Gender						
Female	4	9	38	49	0	
Male	6	12	40	42	0	

GRADE 7						
Disability Status	% Minimal	% Basic	% Proficient	% Advanced	% Not Tested	
Students with Disabilities	23	25	35	16	1	
Students without Disabilities	2	6	37	55	0	
Economic Status						
Economically Disadvantaged	9	15	46	30	1	
Not Economically Disadvantaged	2	5	32	61	0	
English Proficiency						
Limited English Proficient	14	23	51	10	3	
English Proficient	4	8	36	52	0	
Migrant Status						
Migrant	16	23	39	19	3	
Non-migrant	5	9	37	49	0	
Gender						
Female	4	8	37	52	0	
Male	6	10	37	47	0	

GRADE 10						
Disability Status	% Minimal	% Basic	% Proficient	% Advanced	% Not Tested	
Students with Disabilities	34	27	23	13	3	
Students without Disabilities	5	12	30	52	1	
Economic Status						
Economically Disadvantaged	18	21	31	27	2	
Not Economically Disadvantaged	5	10	28	57	1	
English Proficiency						
Limited English Proficient	32	32	25	6	5	
English Proficient	8	13	29	49	1	
Migrant Status						
Migrant	30	24	27	11	8	
Non-migrant	9	14	29	47	1	
Gender						
Female	8	13	30	49	1	
Male	10	14	29	45	1	

GRADE 8						
Disability Status	% Minimal	% Basic	% Proficient	% Advanced	% Not Tested	
Students with Disabilities	26	26	35	12	1	
Students without Disabilities	2	7	45	45	0	
Economic Status						
Economically Disadvantaged	10	17	48	24	1	
Not Economically Disadvantaged	3	6	41	50	0	
English Proficiency						
Limited English Proficient	15	25	49	8	4	
English Proficient	5	9	43	42	0	
Migrant Status						
Migrant	20	18	41	14	8	
Non-migrant	6	10	44	40	1	
Gender						
Female	4	8	42	46	0	
Male	7	12	45	35	1	

% STUDENTS NOT TESTED, BY RACE/ETHNICITY						
Racial/ethnic Group	American Indian/Alaskan Native	Asian/Pacific Islander	Black	Hispanic	White	
Grade 3	1	2	1	3	0	
Grade 4	1	1	0	2	0	
Grade 5	0	2	0	2	0	
Grade 6	0	1	0	2	0	
Grade 7	0	1	1	2	0	
Grade 8	1	1	1	2	0	
Grade 10	2	2	3	3	1	

Source of November 2009 WSAS results:
<http://dpi.wi.gov/sig/index.html>

Note: All numbers rounded to nearest whole number

WSAS by Subgroups: Mathematics (2009-10)

GRADE 3						
Disability Status	% Minimal	% Basic	% Proficient	% Advanced	% Not Tested	
Students with Disabilities	32	13	35	20	1	
Students without Disabilities	12	8	39	41	0	
Economic Status						
Economically Disadvantaged	25	12	41	21	0	
Not Economically Disadvantaged	7	6	37	50	0	
English Proficiency						
Limited English Proficient	25	14	44	17	1	
English Proficient	14	8	38	40	0	
Migrant Status						
Migrant	19	22	44	14	0	
Non-migrant	15	9	39	38	0	
Gender						
Female	15	9	40	35	0	
Male	14	8	37	40	0	

GRADE 4						
Disability Status	% Minimal	% Basic	% Proficient	% Advanced	% Not Tested	
Students with Disabilities	30	14	36	20	1	
Students without Disabilities	8	7	40	44	0	
Economic Status						
Economically Disadvantaged	19	12	44	25	0	
Not Economically Disadvantaged	5	5	37	52	0	
English Proficiency						
Limited English Proficient	19	15	46	20	0	
English Proficient	10	8	39	42	0	
Migrant Status						
Migrant	39	15	31	15	0	
Non-migrant	11	8	40	41	0	
Gender						
Female	12	9	41	39	0	
Male	10	8	39	43	0	

GRADE 5						
Disability Status	% Minimal	% Basic	% Proficient	% Advanced	% Not Tested	
Students with Disabilities	37	14	29	20	1	
Students without Disabilities	9	8	33	50	0	
Economic Status						
Economically Disadvantaged	23	12	37	28	0	
Not Economically Disadvantaged	7	6	30	57	0	
English Proficiency						
Limited English Proficient	26	15	39	20	0	
English Proficient	12	8	32	47	0	
Migrant Status						
Migrant	23	11	50	16	0	
Non-migrant	13	9	33	46	0	
Gender						
Female	13	9	33	45	0	
Male	13	9	32	46	0	

GRADE 6						
Disability Status	% Minimal	% Basic	% Proficient	% Advanced	% Not Tested	
Students with Disabilities	39	18	30	13	1	
Students without Disabilities	7	9	43	41	0	
Economic Status						
Economically Disadvantaged	20	16	43	21	0	
Not Economically Disadvantaged	5	7	39	48	0	
English Proficiency						
Limited English Proficient	24	20	44	12	0	
English Proficient	11	10	41	39	0	
Migrant Status						
Migrant	23	20	38	20	0	
Non-migrant	11	11	41	37	0	
Gender						
Female	11	11	43	36	0	
Male	12	10	40	38	0	

GRADE 7						
Disability Status	% Minimal	% Basic	% Proficient	% Advanced	% Not Tested	
Students with Disabilities	33	22	33	12	1	
Students without Disabilities	4	9	46	40	0	
Economic Status						
Economically Disadvantaged	15	17	48	20	0	
Not Economically Disadvantaged	4	7	43	47	0	
English Proficiency						
Limited English Proficient	18	23	49	11	0	
English Proficient	8	10	44	38	0	
Migrant Status						
Migrant	19	19	48	13	0	
Non-migrant	8	11	45	37	0	
Gender						
Female	8	10	46	36	0	
Male	9	11	43	37	0	

GRADE 10						
Disability Status	% Minimal	% Basic	% Proficient	% Advanced	% Not Tested	
Students with Disabilities	48	22	22	5	3	
Students without Disabilities	10	13	51	25	1	
Economic Status						
Economically Disadvantaged	28	21	40	9	2	
Not Economically Disadvantaged	8	11	51	29	1	
English Proficiency						
Limited English Proficient	37	27	32	2	2	
English Proficient	14	14	48	23	1	
Migrant Status						
Migrant	38	16	38	5	3	
Non-migrant	15	14	48	22	1	
Gender						
Female	14	15	50	20	1	
Male	15	14	45	24	1	

GRADE 8						
Disability Status	% Minimal	% Basic	% Proficient	% Advanced	% Not Tested	
Students with Disabilities	33	26	32	8	1	
Students without Disabilities	5	11	51	33	0	
Economic Status						
Economically Disadvantaged	16	21	49	14	1	
Not Economically Disadvantaged	4	9	48	38	0	
English Proficiency						
Limited English Proficient	19	24	49	7	0	
English Proficient	8	12	48	31	0	
Migrant Status						
Migrant	24	33	35	8	0	
Non-migrant	9	13	49	30	0	
Gender						
Female	9	13	50	28	0	
Male	9	13	47	31	0	

% STUDENTS NOT TESTED, BY RACE/ETHNICITY						
Racial/ethnic Group	American Indian/Alaskan Native	Asian/Pacific Islander	Black	Hispanic	White	
Grade 3	1	0	0	0	0	
Grade 4	1	0	0	0	0	
Grade 5	0	0	0	0	0	
Grade 6	0	0	1	0	0	
Grade 7	0	0	1	0	0	
Grade 8	1	0	1	0	0	
Grade 10	2	1	3	2	1	

Source of November 2009 WSAS results:
<http://dpi.wi.gov/sig/index.html>

Note: All numbers rounded to nearest whole number