

2007

**Wisconsin Youth Risk Behavior Survey
(YRBS)**

Trends (1993 – 2007)

<http://dpi.wi.gov/sspw/yrbsindx.html>

Submitted by:
The Center for Urban Initiatives and Research
University of Wisconsin – Milwaukee

Table of Contents

Section		Page Number
I.	Alcohol and Other Drug Use	5
II.	Body Mass Index	13
III.	Physical Activity	15
IV.	Sexual Behaviors	17
V.	Suicide	21
VI.	Tobacco	25
VII.	Traffic Safety	33
VIII.	Weapons and Violence	37
IX.	Asthma	43

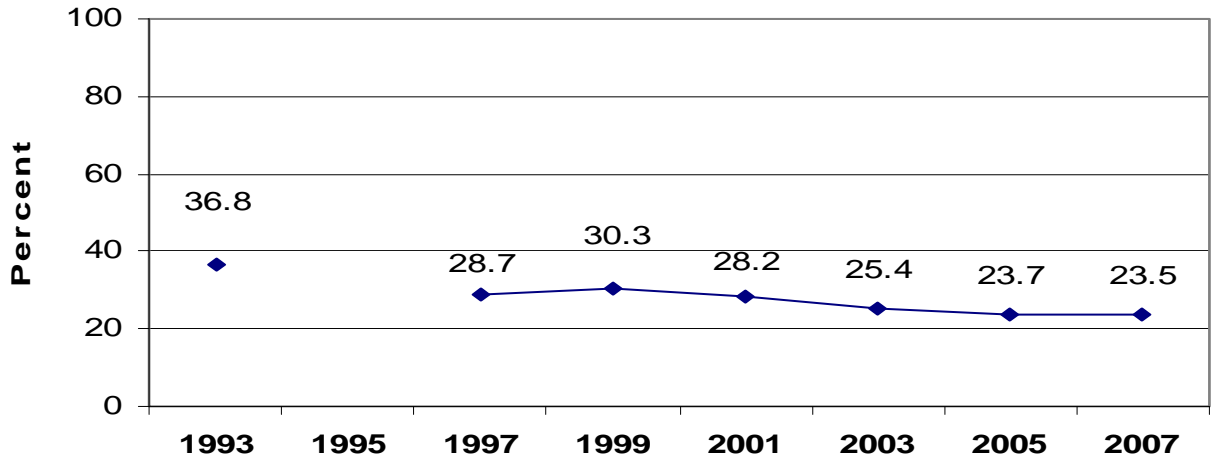
The following trend line graphs describe whether a behavior has increased, decreased, or stayed the same over time. Most of the graphs provide trends for the total population (i.e., Wisconsin public high school students) and a few look at trends by sex.

Only YRBS questions that appeared on the National YRBS questionnaire are eligible for inclusion in the report. Questions that only appear on the Wisconsin YRBS questionnaire are not included in this report.

Logistic regression analysis was used to test for change over time. The regression models used control for changes in distributions by sex, race/ethnicity, and grade and simultaneously assess linear and quadratic time effects. Logistic regression analysis uses all available years of data. It does not consider the oldest and the most recent data point only. Logistic regression analysis provides an appropriate test of change over long periods of time.

Section I: Alcohol and Other Drug Use

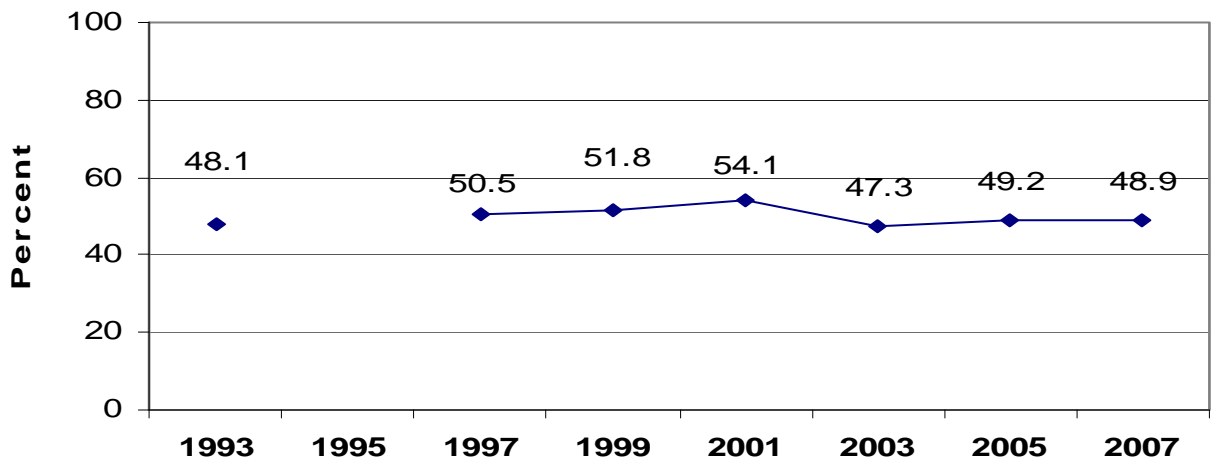
Percentage of students who had their first drink of alcohol other than a few sips before age 13 years (1993–2007)



Data from 1995 unavailable
2007 Wisconsin Youth Risk Behavior Survey

Wisconsin Department of Public Instruction

Percentage of students who had at least 1 drink of alcohol on one or more of the past 30 days (1993–2007)*

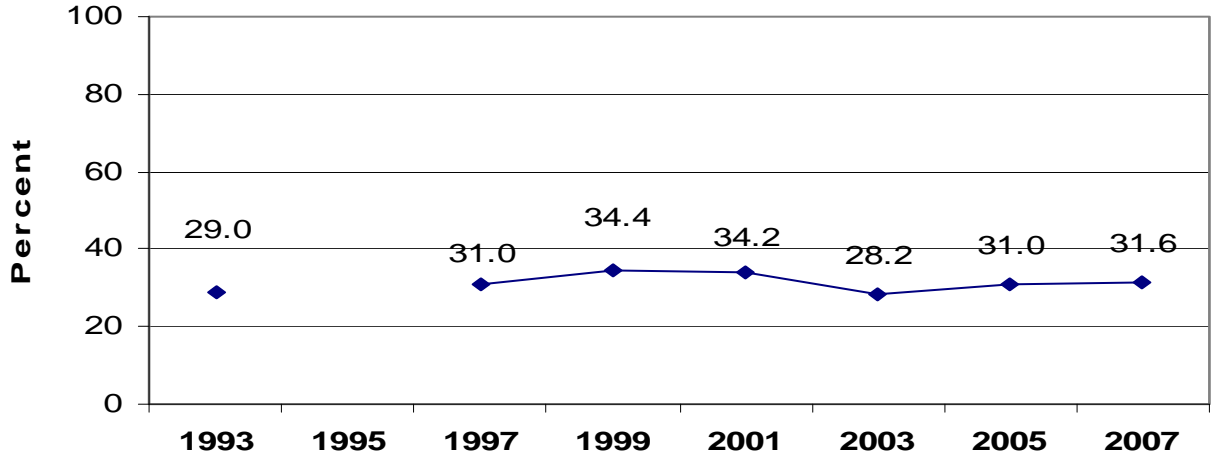


* Note: Decrease from a high in 2001 but long-term trend remains unchanged
Data from 1995 unavailable

2007 Wisconsin Youth Risk Behavior Survey

Wisconsin Department of Public Instruction

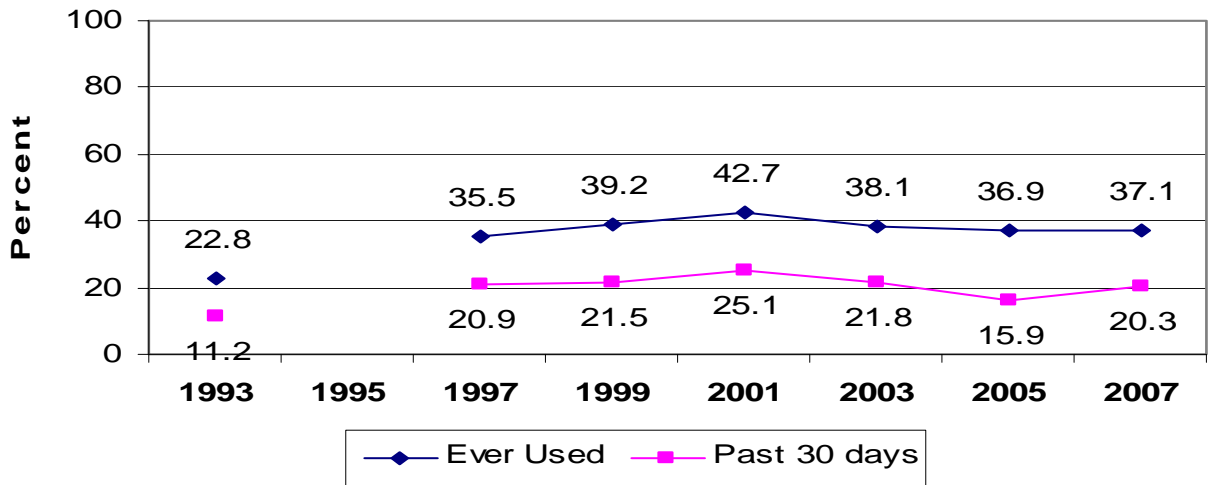
Percentage of students who had 5 or more drinks of alcohol in a row, that is, within a couple of hours, on 1 or more of the past 30 days (1993–2007)*



*Note: Decrease from a high in 1999 but long-term trend remains unchanged
 Data from 1995 unavailable
 2007 Wisconsin Youth Risk Behavior Survey

Wisconsin Department of Public Instruction

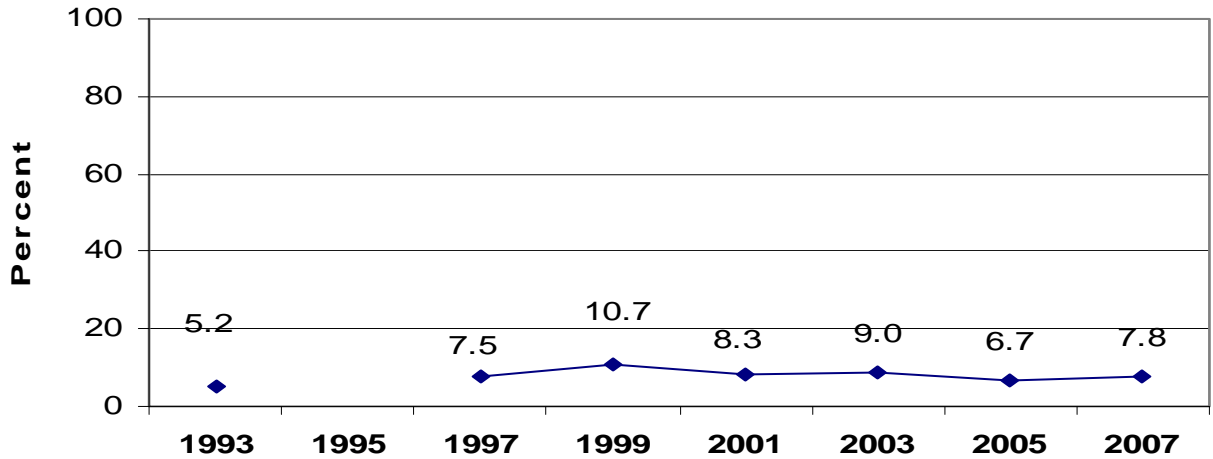
Percentage of students who used marijuana 1 or more times during their life or in the past 30 days (1993–2007)



Data from 1995 unavailable
 2007 Wisconsin Youth Risk Behavior Survey

Wisconsin Department of Public Instruction

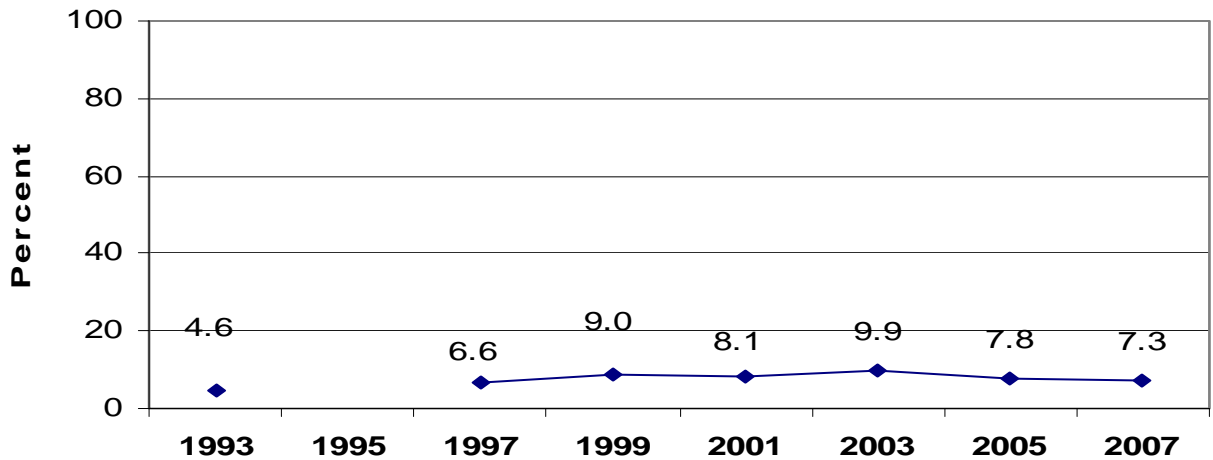
Percentage of students who tried marijuana for the first time before the age of 13 years (1993–2007)*



*Note: Decrease from a high in 1999 but long-term trend remains unchanged
Data from 1995 unavailable
2007 Wisconsin Youth Risk Behavior Survey

Wisconsin Department of Public Instruction

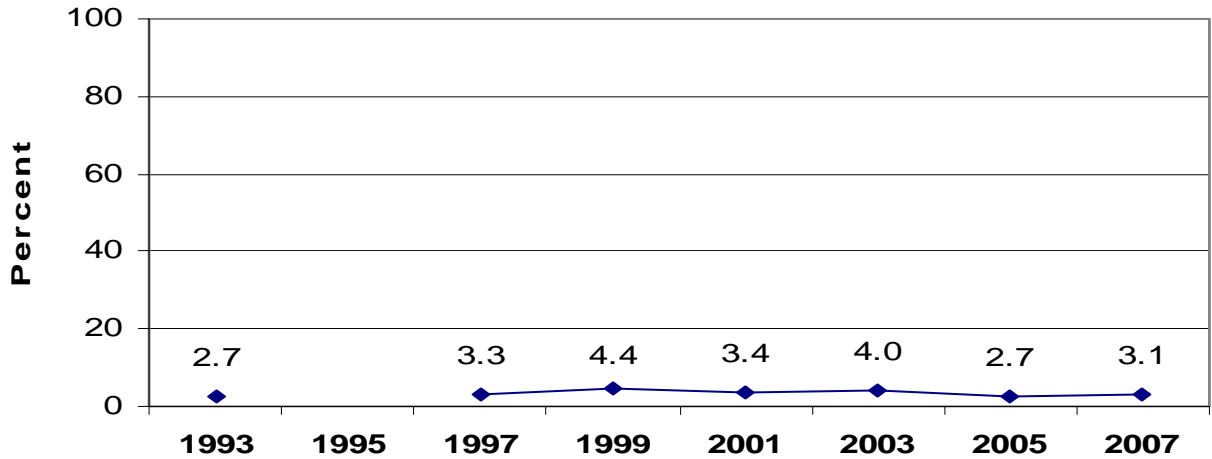
Percentage of students who used any form of cocaine, including powder, crack, or freebase one or more times during their life (1993–2007)



Data from 1995 unavailable
2007 Wisconsin Youth Risk Behavior Survey

Wisconsin Department of Public Instruction

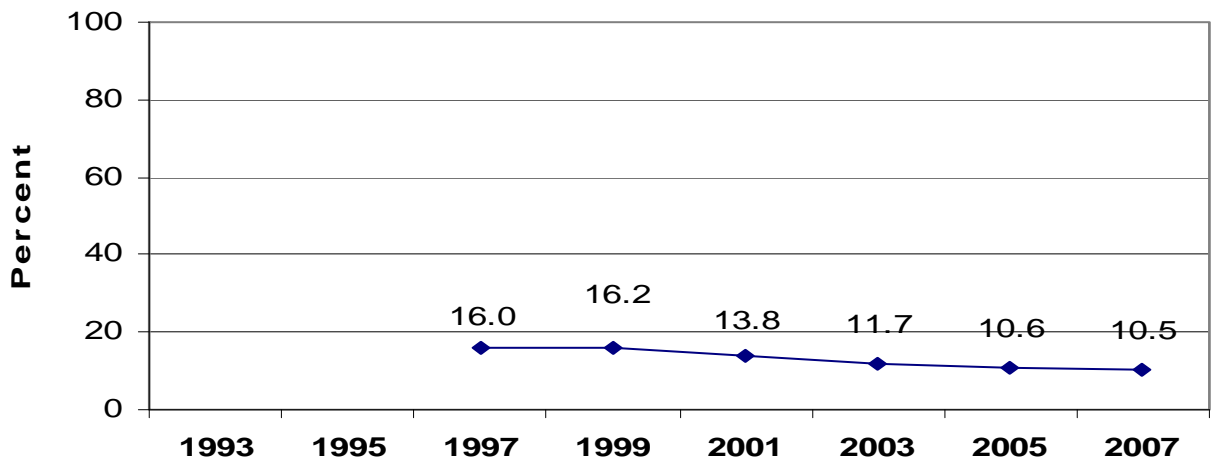
Percentage of students who used any form of cocaine, including powder, crack, or freebase, one or more times during the past 30 days (1993–2007)*



*Note: The long-term trend remains unchanged..
Data from 1995 unavailable
2007 Wisconsin Youth Risk Behavior Survey

Wisconsin Department of Public Instruction

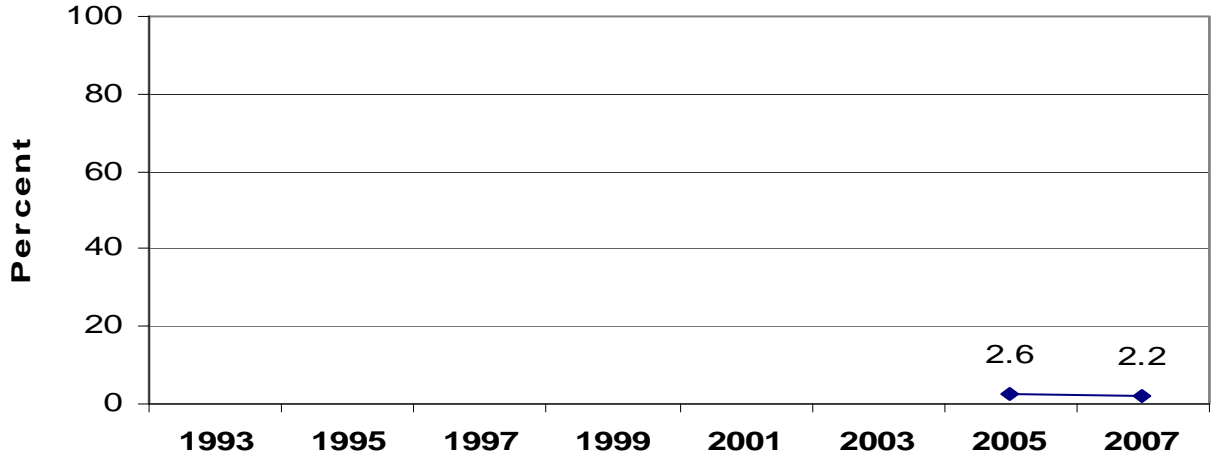
Percentage of students who sniffed glue, breathed the contents of aerosol spray cans, or inhaled any paints or sprays to get high one or more times during their life (1997–2007)*



*Note: Question first appeared on the 1997 Wisconsin YRBS.
2007 Wisconsin Youth Risk Behavior Survey

Wisconsin Department of Public Instruction

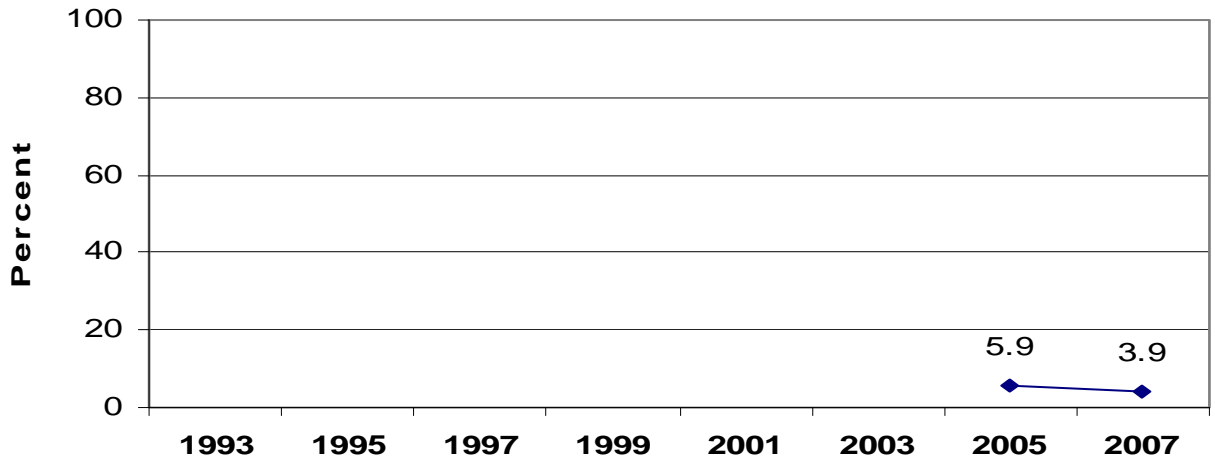
Percentage of students who used heroin one or more times during their life (2005–2007)*



*Note: Question first appeared on the 2005 Wisconsin YRBS
2007 Wisconsin Youth Risk Behavior Survey

Wisconsin Department of Public Instruction

Percentage of students who used methamphetamines one or more times during their life (2005–2007)*

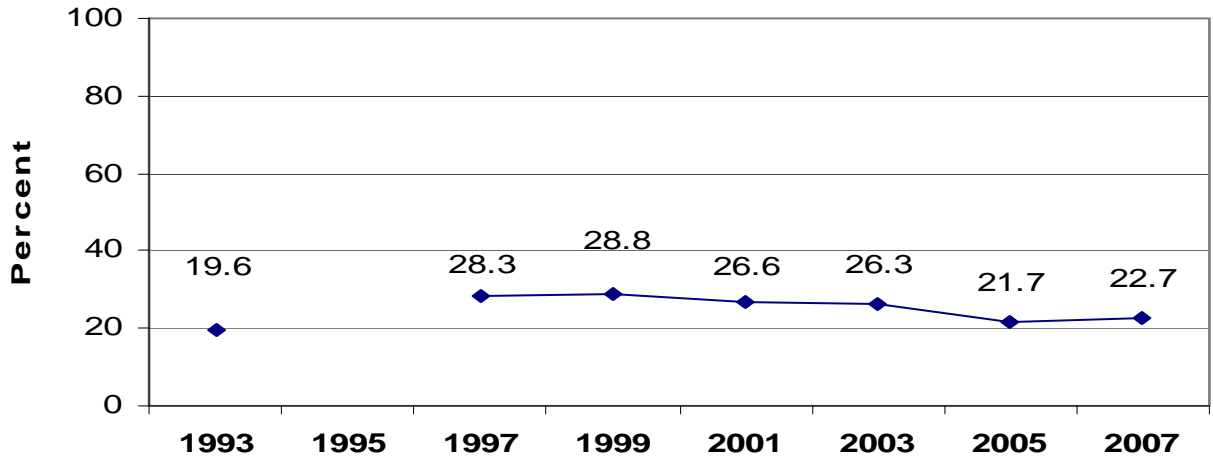


*Note: Question first appeared on the 2005 Wisconsin YRBS
2007 Wisconsin Youth Risk Behavior Survey

Wisconsin Department of Public Instruction

2007 Wisconsin Youth Risk Behavior Survey

Percentage of students who were offered, sold, or given an illegal drug by someone on school property during the past 12 months (1993–2007)*



*Note: Decrease from a high in 1999 but long-term trend remains unchanged.

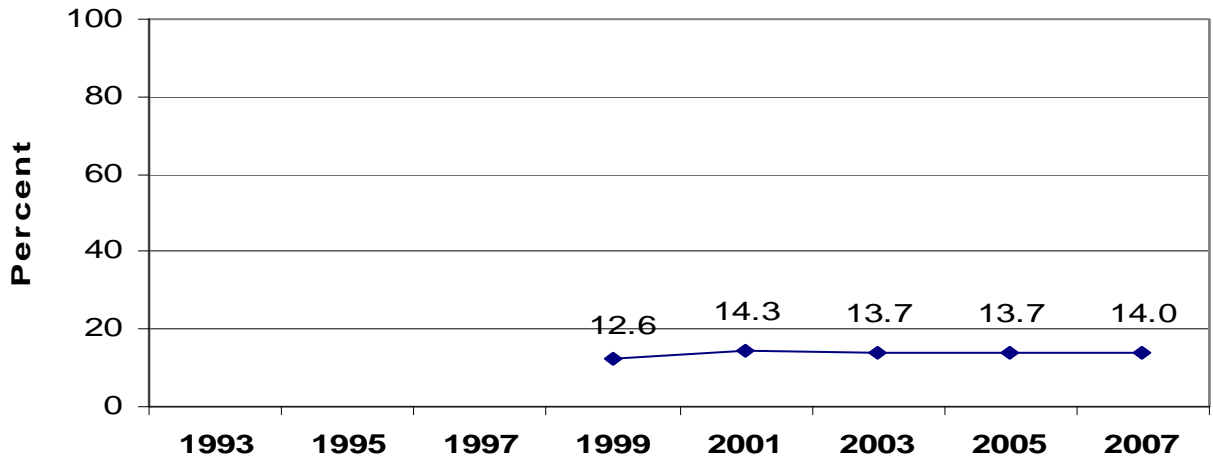
Data from 1995 unavailable

2007 Wisconsin Youth Risk Behavior Survey

Wisconsin Department of Public Instruction

Section II: Body Mass Index (BMI)

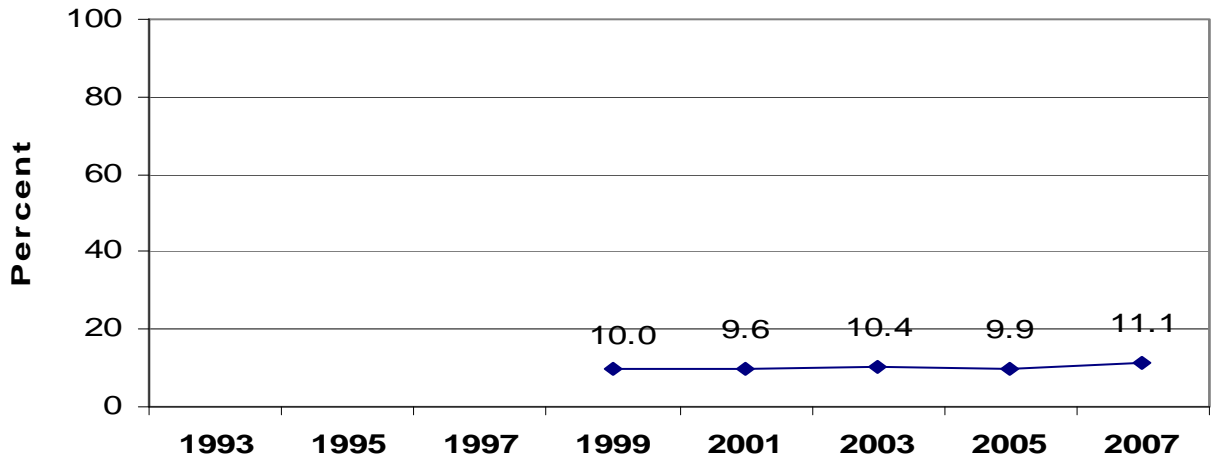
Percentage of students who were at risk for becoming overweight (i.e., at or above the 85th percentile but below the 95th percentile for body mass index) (1999–2007)*



*Note: The long-term trend remains unchanged.
2007 Wisconsin Youth Risk Behavior Survey

Wisconsin Department of Public Instruction

Percentage of students who were overweight (i.e., at or above the 95th percentile for body mass index) (1999–2007)*

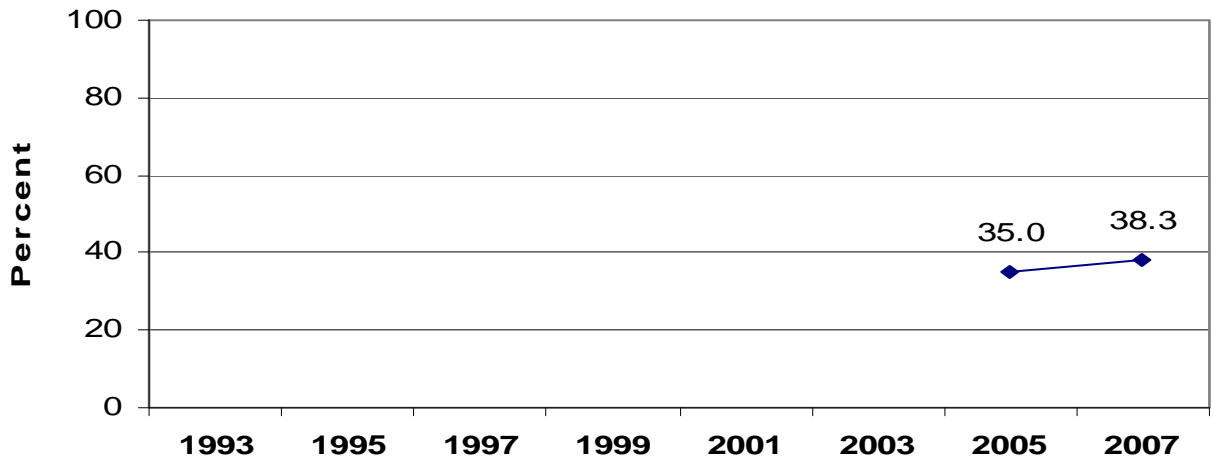


*Note: The long-term trend remains unchanged.
2007 Wisconsin Youth Risk Behavior Survey

Wisconsin Department of Public Instruction

Section III: Physical Activity

Percentage of students who were physically active for a total of at least 60 minutes per day on five or more of the past seven days (2005–2007)*

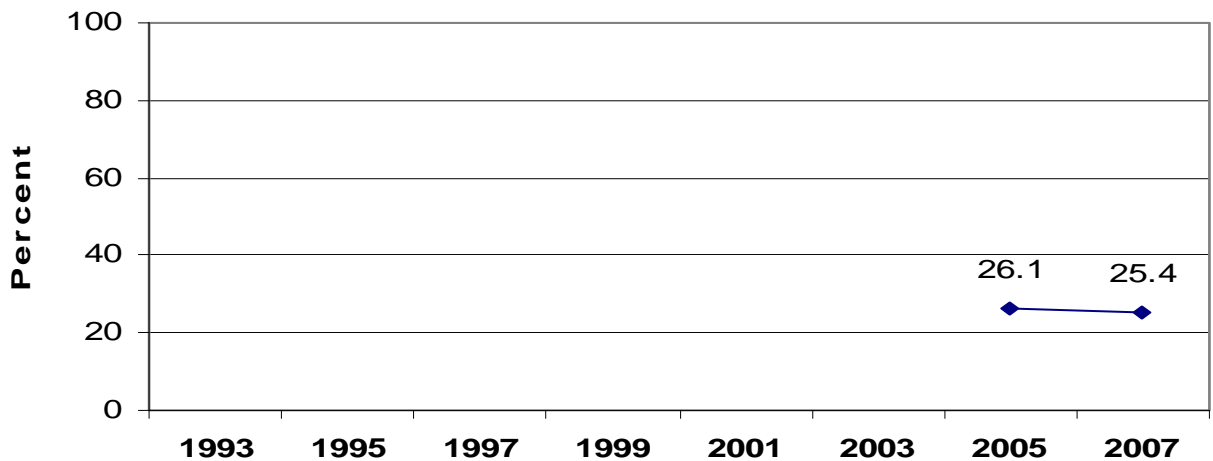


*Note: Question first appeared on the 2005 Wisconsin YRBS. The change between 2005 and 2007 is statistically insignificant.

2007 Wisconsin Youth Risk Behavior Survey

Wisconsin Department of Public Instruction

Percentage of students who watched three or more hours per day of TV on an average school day (2005–2007)*



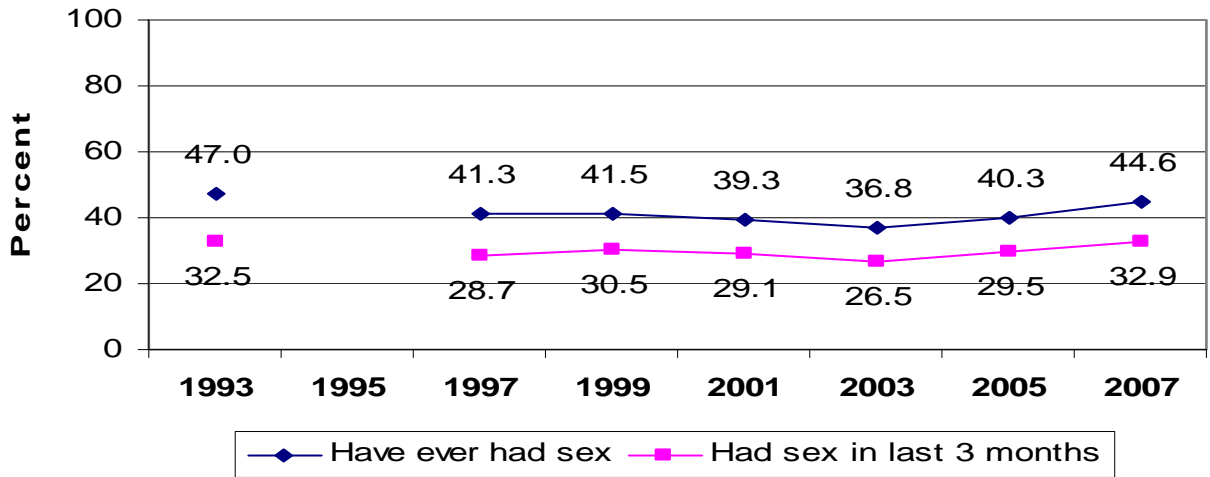
*Note: Question first appeared on the 2005 Wisconsin YRBS. The change between 2005 and 2007 is statistically insignificant.

2007 Wisconsin Youth Risk Behavior Survey

Wisconsin Department of Public Instruction

Section IV: Sexual Behaviors

Percentage of students who ever had sexual intercourse or those who have had sexual intercourse in the last 3 months (1993–2007)*



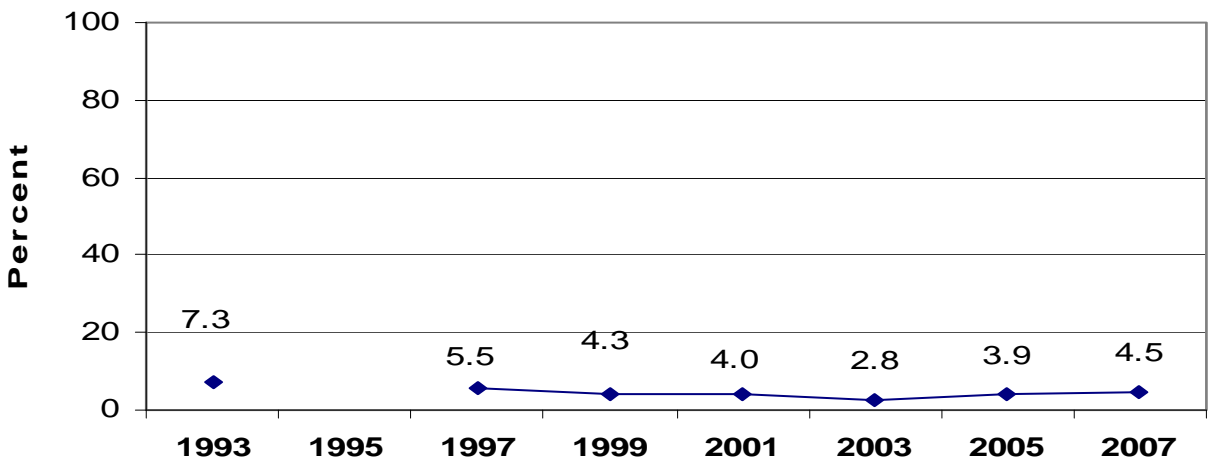
*Note: For children who have ever had sex, the long-term trend (1993–2007) has decreased despite an increase from 2003–2007. For children who have had sex in the last three months, the long-term trend (1993–2007) remains unchanged despite an increase from 2003–2007.

Data from 1995 unavailable

2007 Wisconsin Youth Risk Behavior Survey

Wisconsin Department of Public Instruction

Percentage of students who had sexual intercourse for the first time before age 13 years (1993–2007)

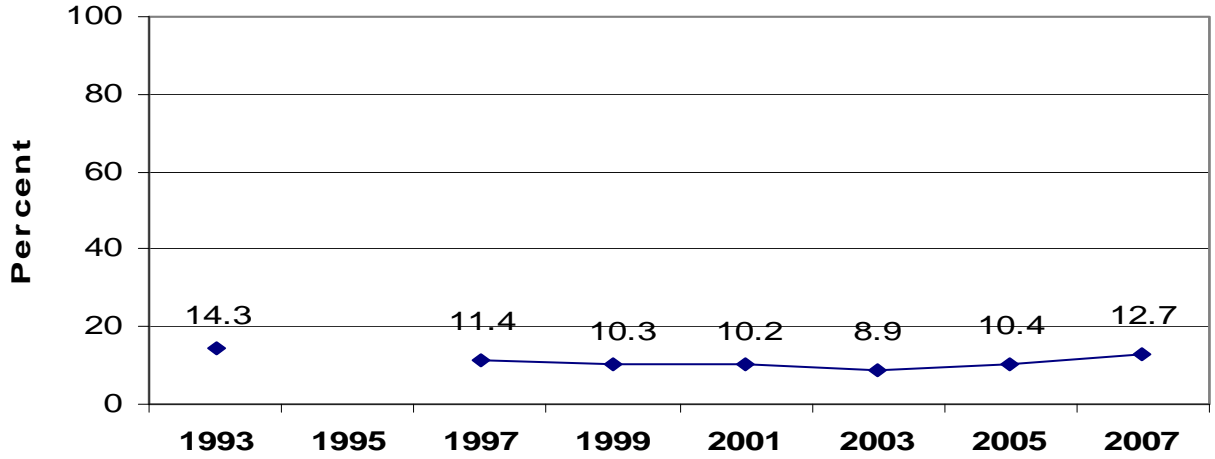


Data from 1995 unavailable

2007 Wisconsin Youth Risk Behavior Survey

Wisconsin Department of Public Instruction

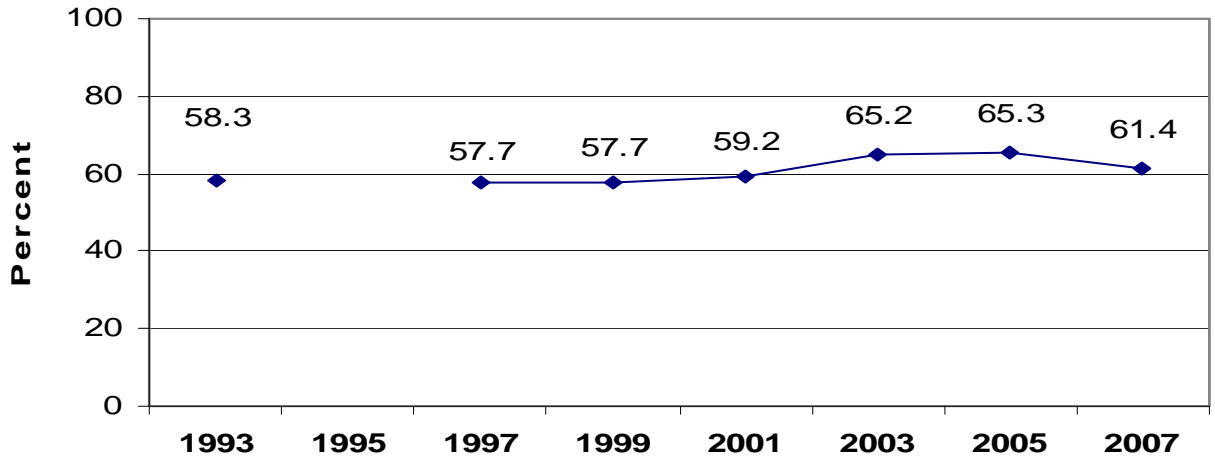
Percentage of students who had sexual intercourse with four or more people during their life (1993–2007)



Data from 1995 unavailable
2007 Wisconsin Youth Risk Behavior Survey

Wisconsin Department of Public Instruction

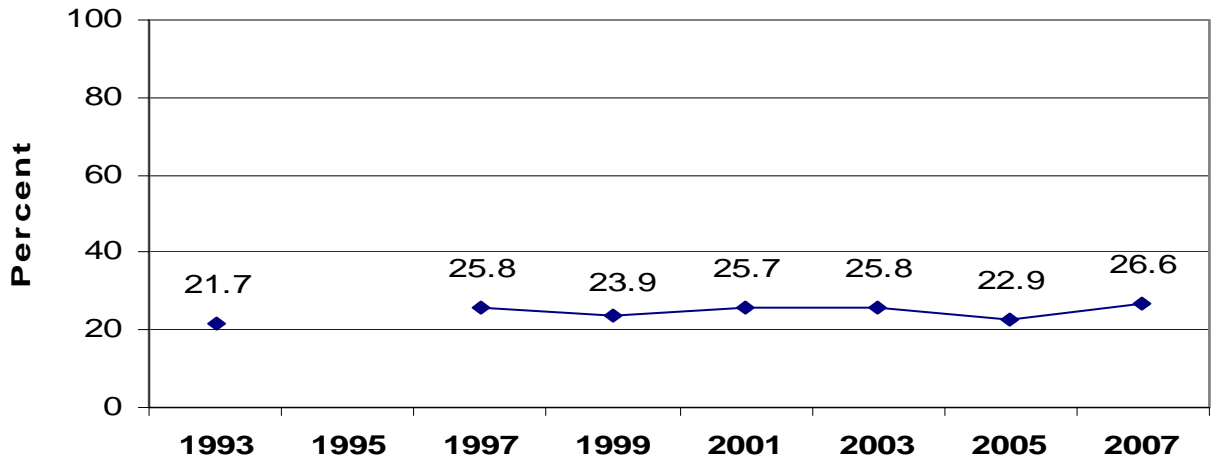
Among students who had sexual intercourse during the past three months, the percentage who used a condom during last sexual intercourse (1993–2007)



Data from 1995 unavailable
2007 Wisconsin Youth Risk Behavior Survey

Wisconsin Department of Public Instruction

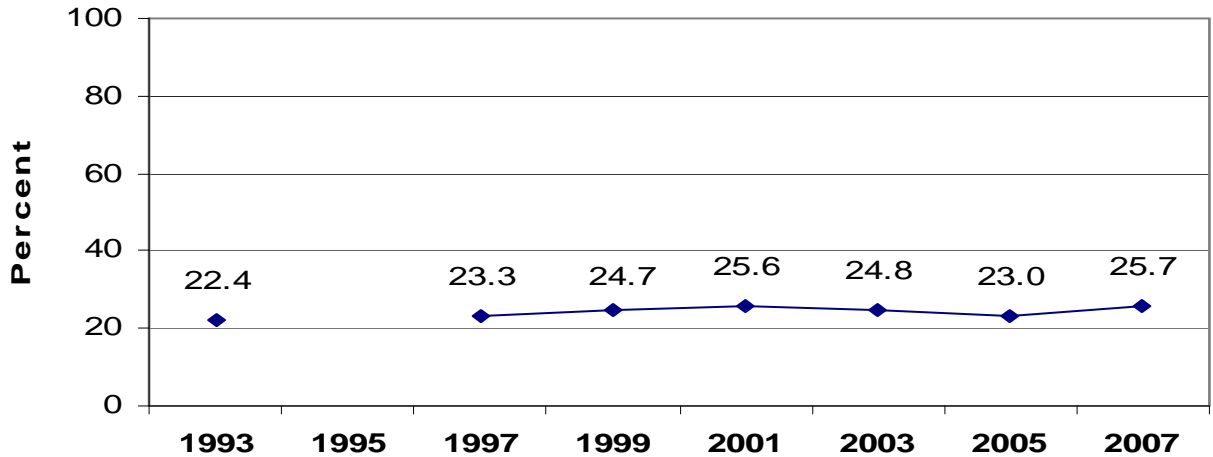
Among students who had sexual intercourse during the past three months, the percentage who drank alcohol or used drugs before last sexual intercourse (1993–2007)*



*Note: The long-term trend is unchanged.
Data from 1995 unavailable
2007 Wisconsin Youth Risk Behavior Survey

Wisconsin Department of Public Instruction

Among students who had sexual intercourse during the past three months, the percentage who used birth control pills to prevent pregnancy before last sexual intercourse (1993–2007)*

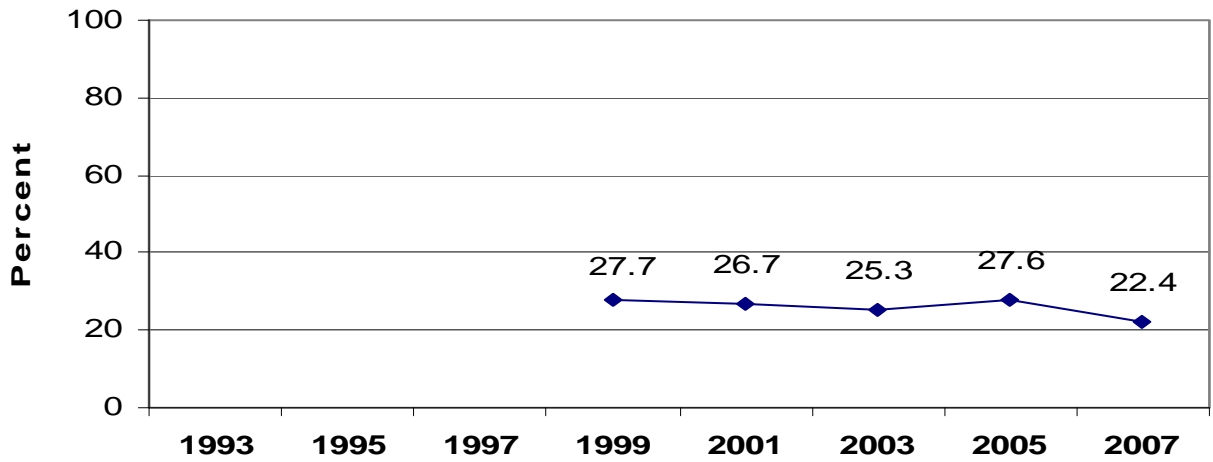


*Note: The long-term trend is unchanged.
Data from 1995 unavailable
2007 Wisconsin Youth Risk Behavior Survey

Wisconsin Department of Public Instruction

Section V: Suicide

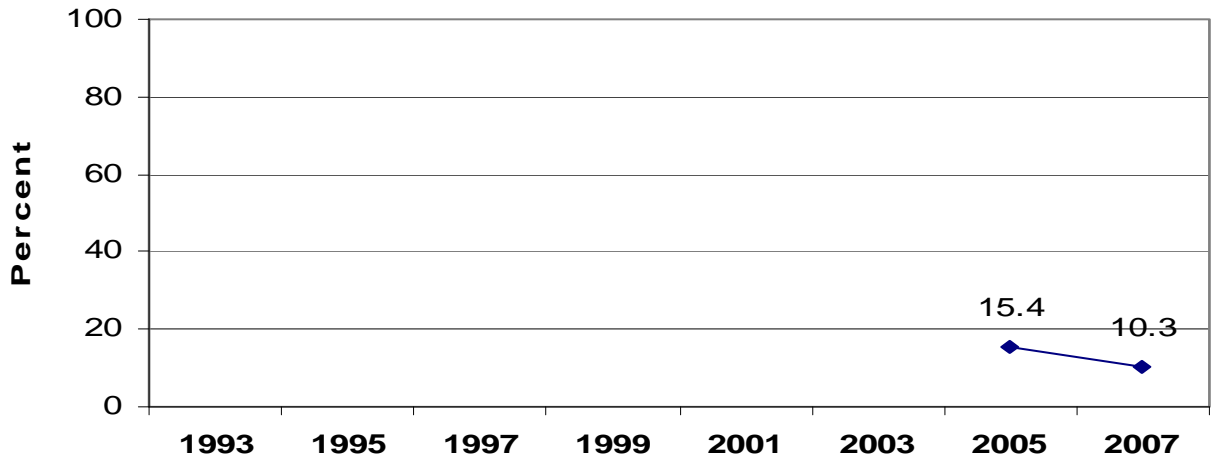
Percentage of students who felt so sad or hopeless almost every day for two weeks or more in a row that they stopped doing some usual activities during the past 12 months (1999–2007)*



*Note: Question first appeared on the 1999 Wisconsin YRBS.
2007 Wisconsin Youth Risk Behavior Survey

Wisconsin Department of Public Instruction

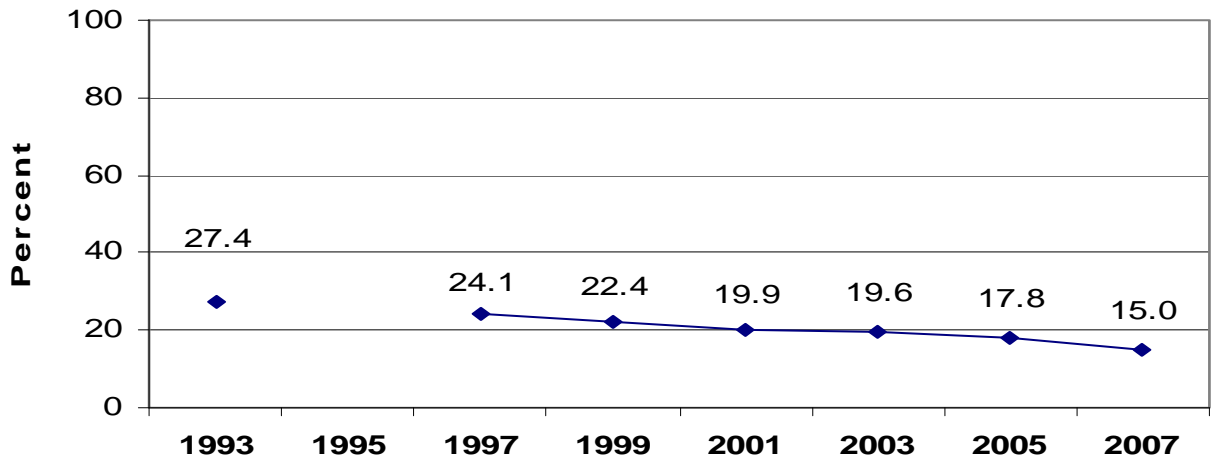
Percentage of students who made a plan about how they would attempt suicide during the past 12 months (2005–2007)*



*Note: Question first appeared on the 2005 Wisconsin YRBS
2007 Wisconsin Youth Risk Behavior Survey

Wisconsin Department of Public Instruction

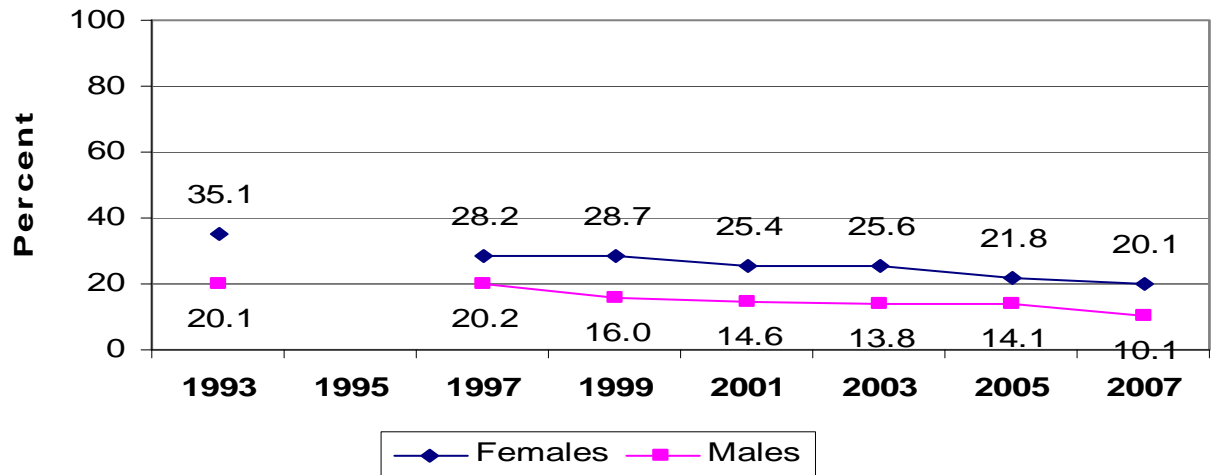
Percentage of students who seriously considered attempting suicide during the past 12 months (1993–2007)



Data from 1995 unavailable
2007 Wisconsin Youth Risk Behavior Survey

Wisconsin Department of Public Instruction

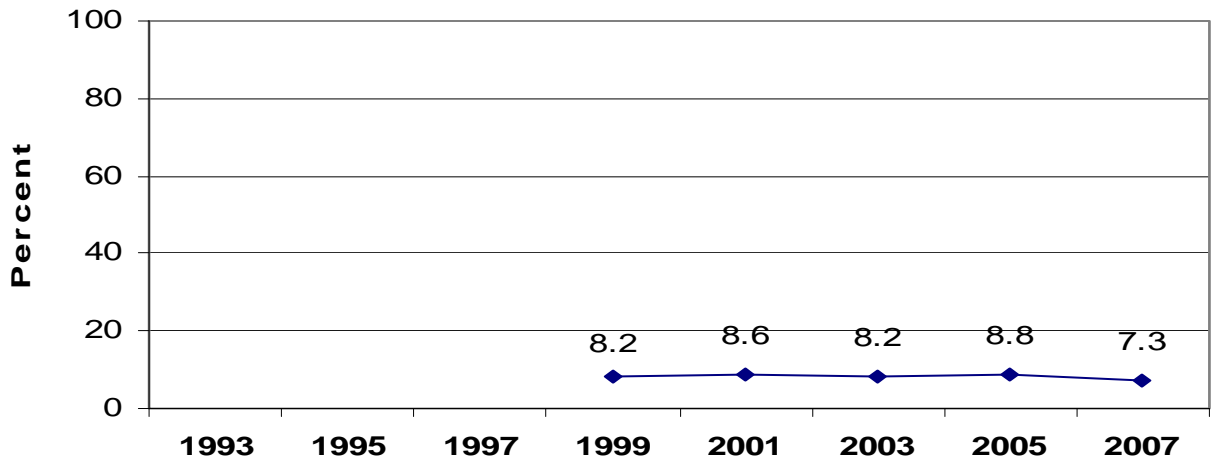
Percentage of students who had seriously considered attempting suicide during the past 12 months, by gender (1993–2007)



Data from 1995 unavailable
2007 Wisconsin Youth Risk Behavior Survey

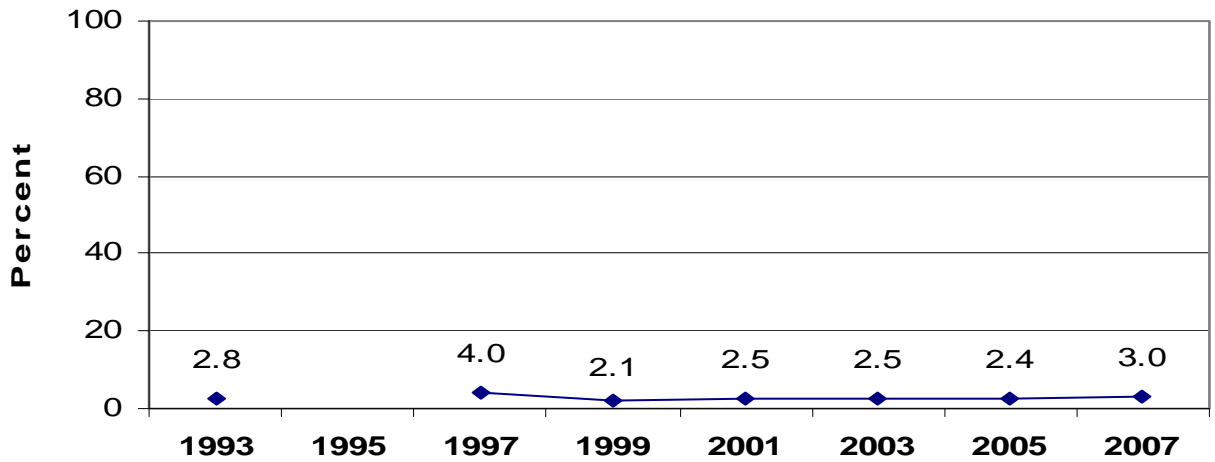
Wisconsin Department of Public Instruction

Percentage of students who actually attempted suicide one or more times during the past 12 months (1999–2007)*



*Note: Question first appeared on the 1999 Wisconsin YRBS. The long-term trend (1999 – 2007) is unchanged.
 2007 Wisconsin Youth Risk Behavior Survey Wisconsin Department of Public Instruction

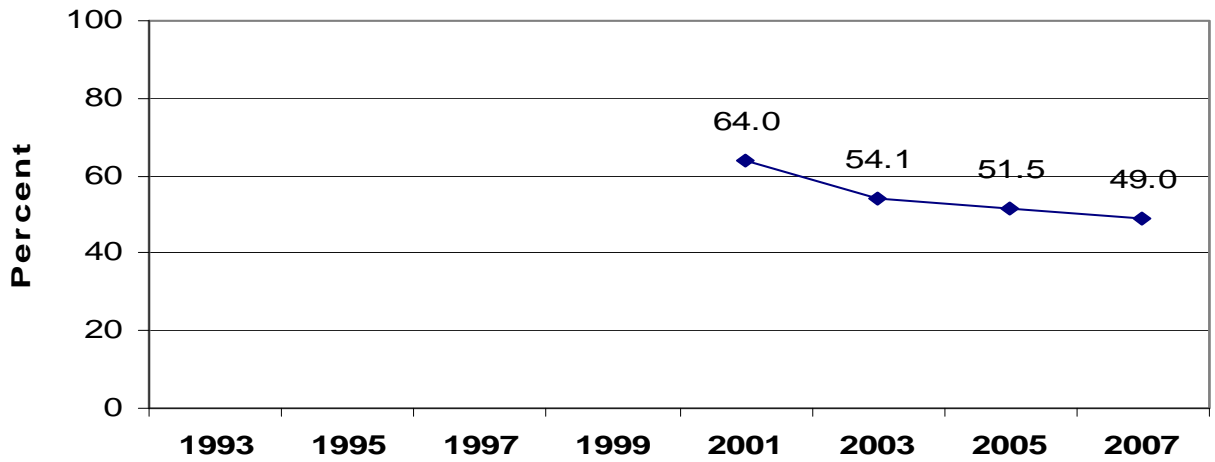
Percentage of students who made a suicide attempt during the past 12 months that resulted in an injury, poisoning, or overdose that had to be treated by a doctor or nurse (1993–2007)*



*Note: The long-term trend is unchanged.
 Data from 1995 unavailable
 2007 Wisconsin Youth Risk Behavior Survey Wisconsin Department of Public Instruction

Section VI: Tobacco

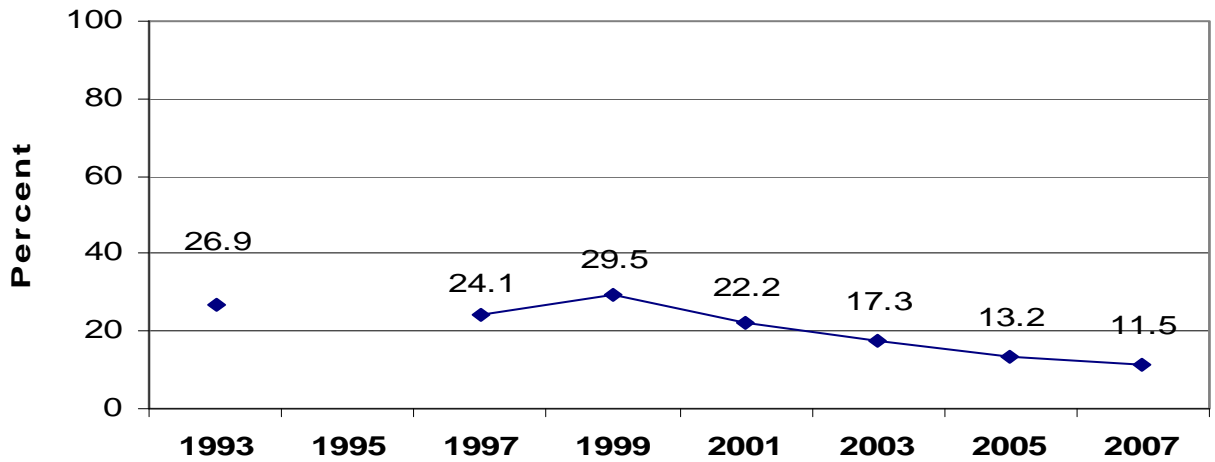
Percentage of students who ever tried cigarette smoking, even one or two puffs (2001–2007)*



*Note: Question first appeared on the 2001 Wisconsin YRBS
2007 Wisconsin Youth Risk Behavior Survey

Wisconsin Department of Public Instruction

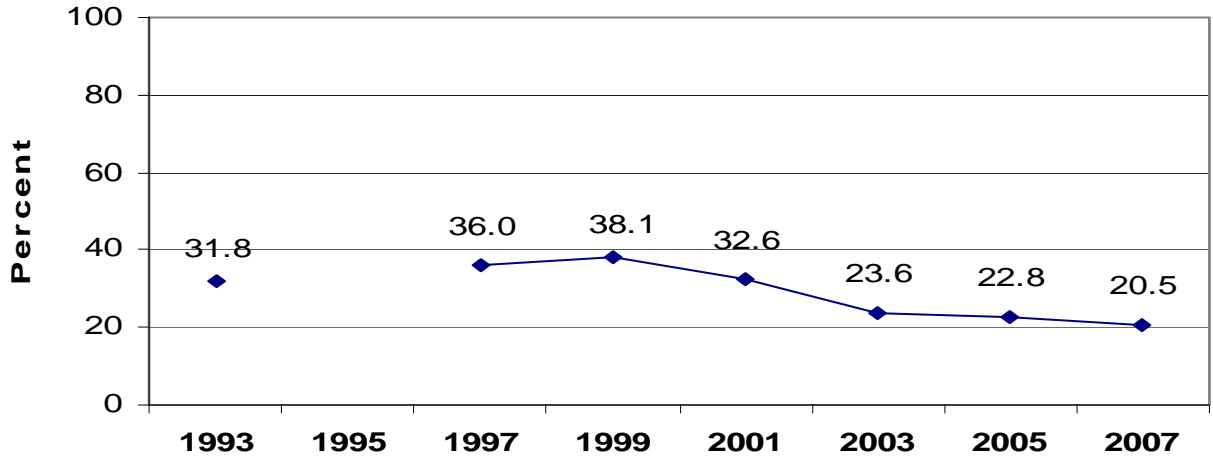
Percentage of students who smoked a whole cigarette for the first time before age 13 years (1993–2007)



Data from 1995 unavailable
2007 Wisconsin Youth Risk Behavior Survey

Wisconsin Department of Public Instruction

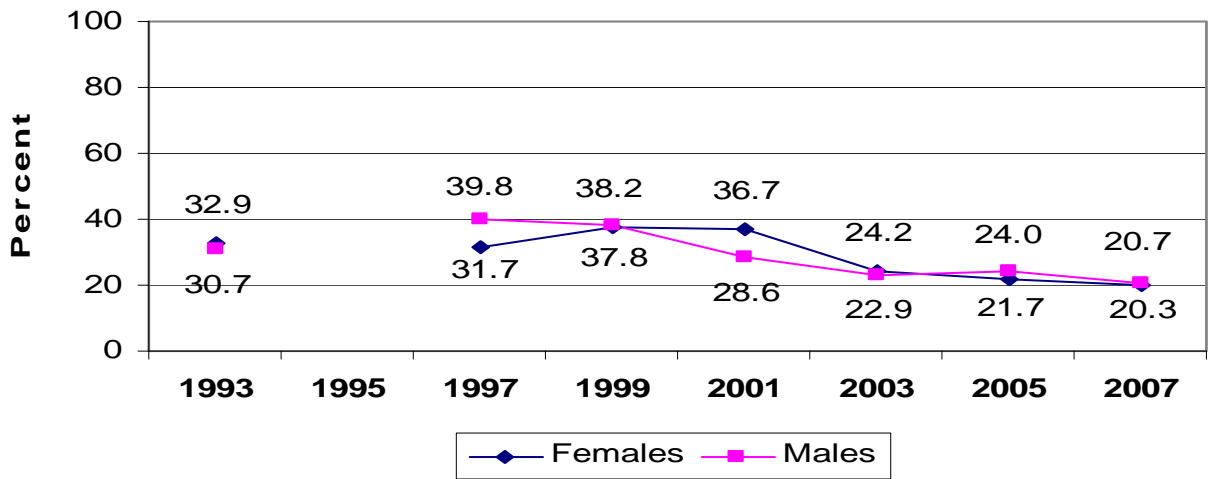
Percentage of students who smoked cigarettes on 1 or more of the past 30 days (1993–2007)



Data from 1995 unavailable
2007 Wisconsin Youth Risk Behavior Survey

Wisconsin Department of Public Instruction

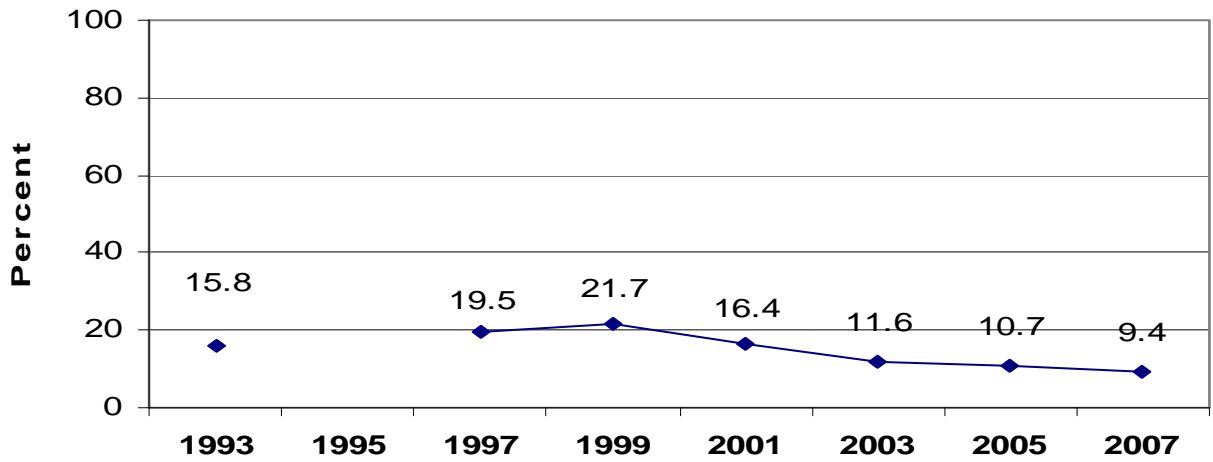
Percentage of students who smoked cigarettes on 1 or more of the past 30 days, by gender (1993–2007)



Data from 1995 unavailable
2007 Wisconsin Youth Risk Behavior Survey

Wisconsin Department of Public Instruction

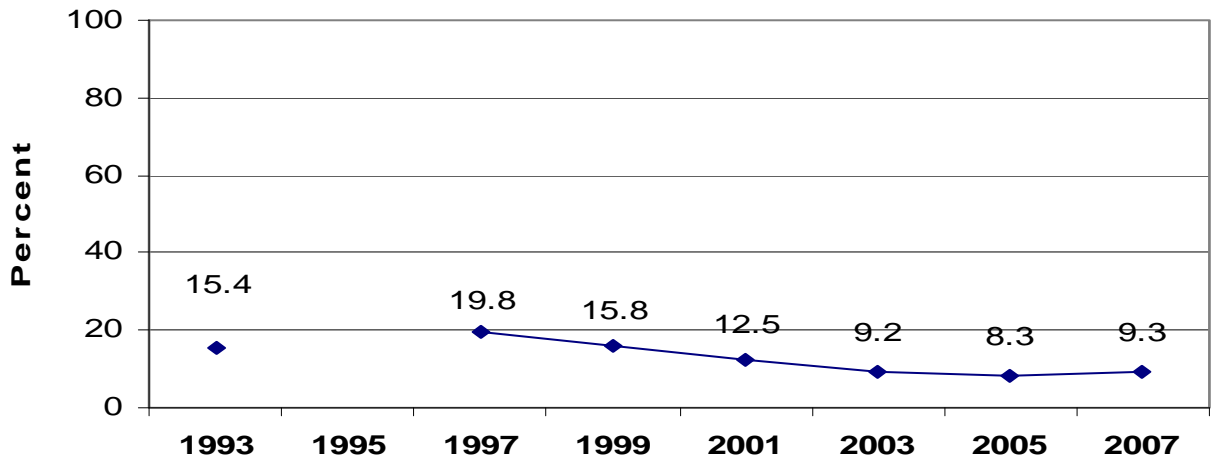
Percentage of students who smoked cigarettes on 20 or more of the past 30 days (1993–2007)



Data from 1995 unavailable
2007 Wisconsin Youth Risk Behavior Survey

Wisconsin Department of Public Instruction

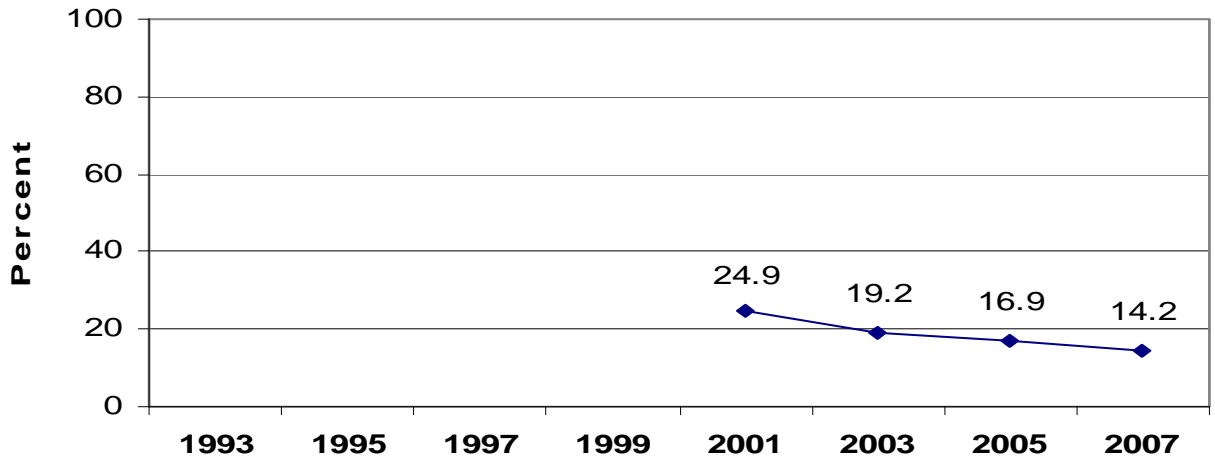
Among students who are current smokers, the percentage who smoked more than 10 cigarettes per day on the days they smoked during the past 30 days (1993–2007)



Data from 1995 unavailable
2007 Wisconsin Youth Risk Behavior Survey

Wisconsin Department of Public Instruction

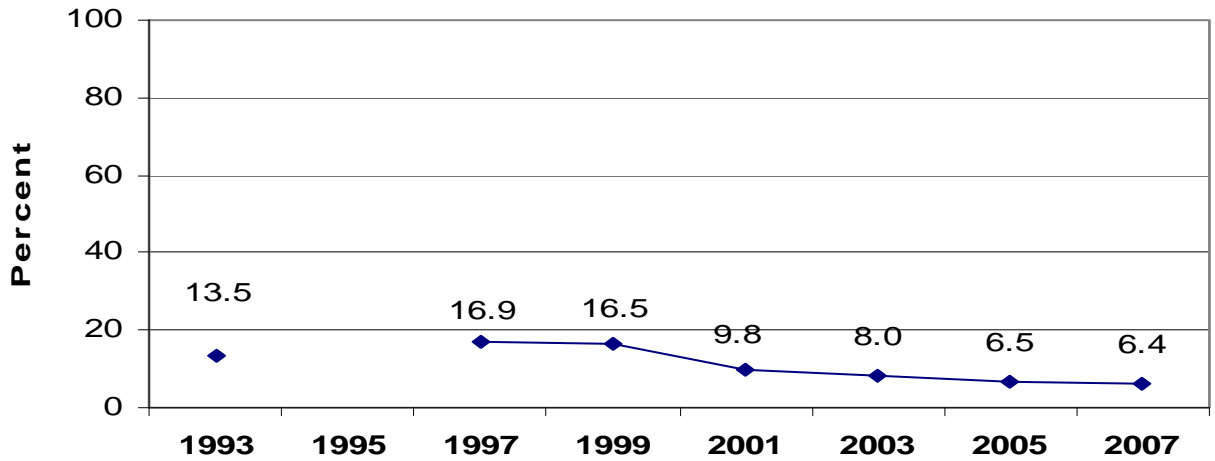
Percentage of students who ever smoked cigarettes daily, that is, at least 1 cigarette every day for 30 days (2001–2007)*



*Note: Question first appeared on the 2001 Wisconsin YRBS
2007 Wisconsin Youth Risk Behavior Survey

Wisconsin Department of Public Instruction

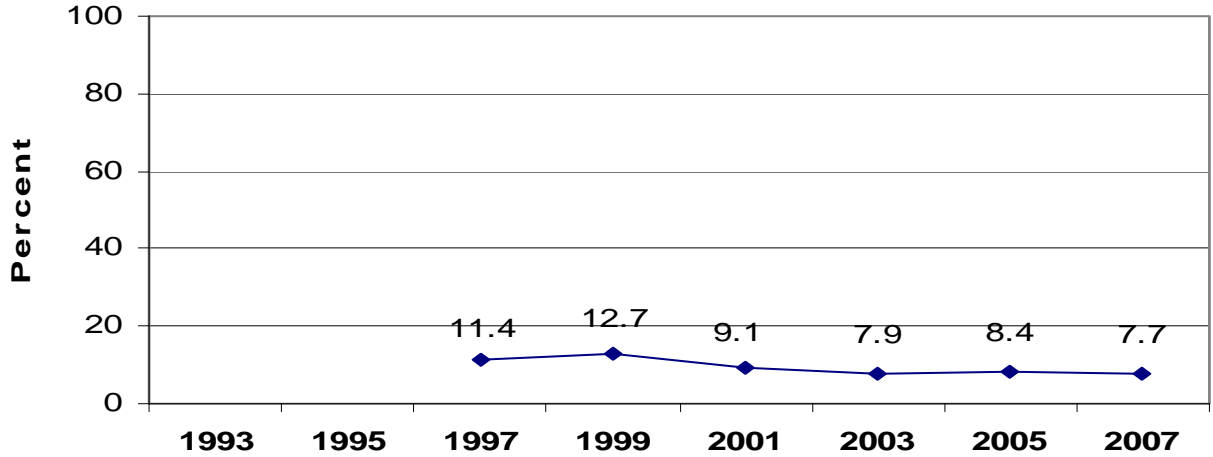
Percentage of students who smoked cigarettes on school property on 1 or more of the past 30 days (1993–2007)



Data from 1995 unavailable
2007 Wisconsin Youth Risk Behavior Survey

Wisconsin Department of Public Instruction

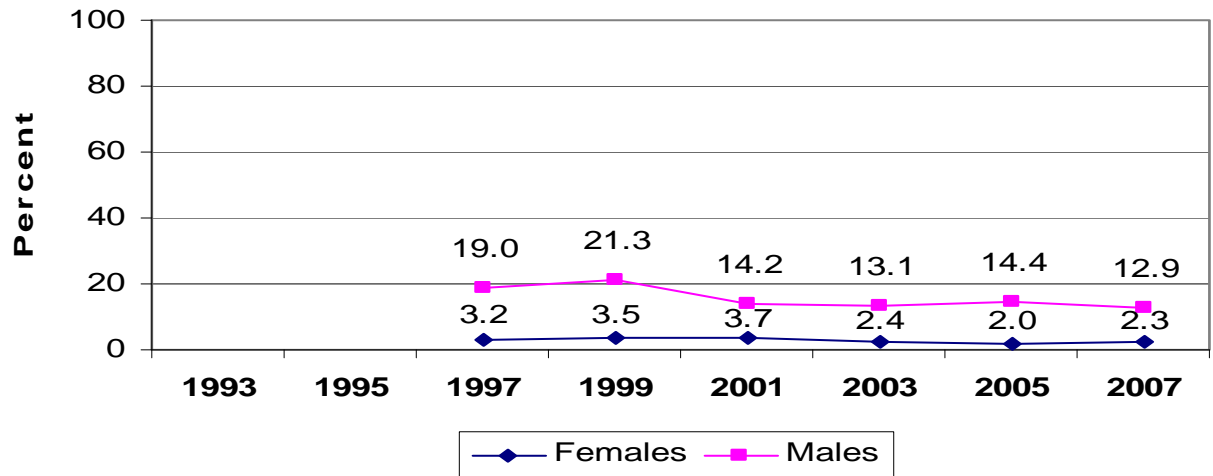
Percentage of students who used chewing tobacco, snuff, or dip on 1 or more of the past 30 days (1997–2007)*



*Note: Question was modified in 1997
2007 Wisconsin Youth Risk Behavior Survey

Wisconsin Department of Public Instruction

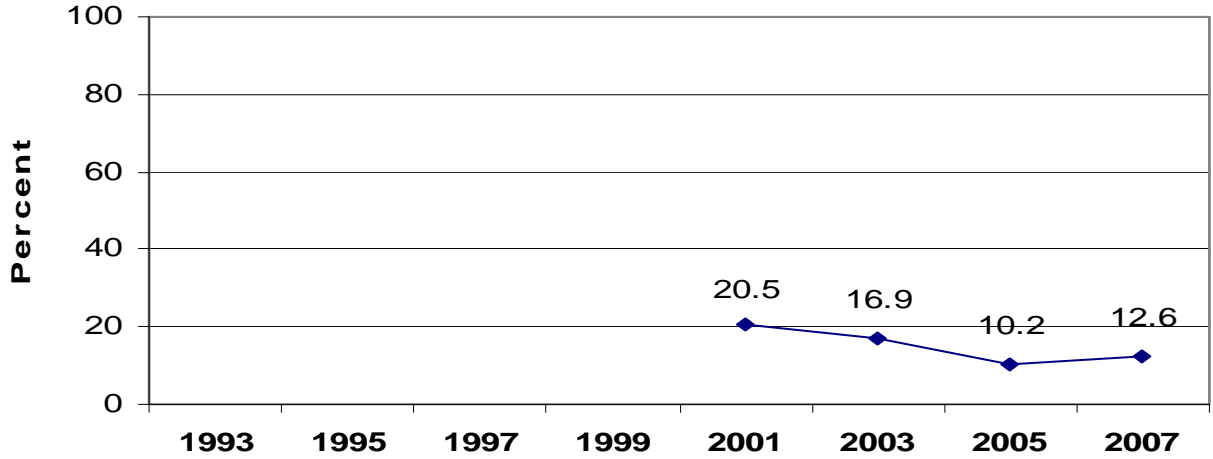
Percentage of students who used chewing tobacco, snuff, or dip on 1 or more of the past 30 days, by gender (1997–2007)*



*Note: Question first appeared on the 1997 Wisconsin YRBS
2007 Wisconsin Youth Risk Behavior Survey

Wisconsin Department of Public Instruction

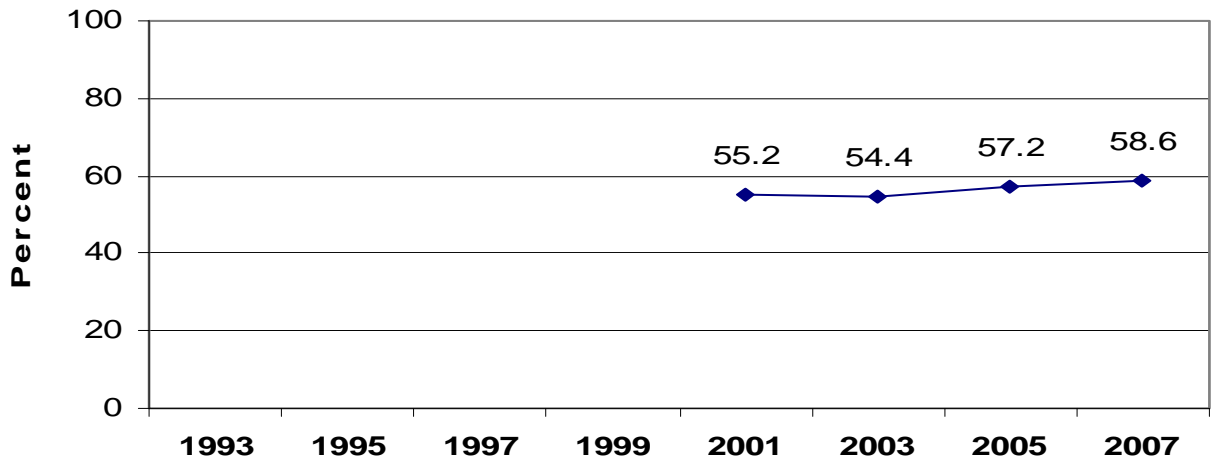
Among students who were less than 18 years of age and who reported current cigarette use, the percentage who usually got their own cigarettes by buying them in a store or gas station during the past 30 days (2001–2007)*



*Note: Question first appeared on the 2001 Wisconsin YRBS
2007 Wisconsin Youth Risk Behavior Survey

Wisconsin Department of Public Instruction

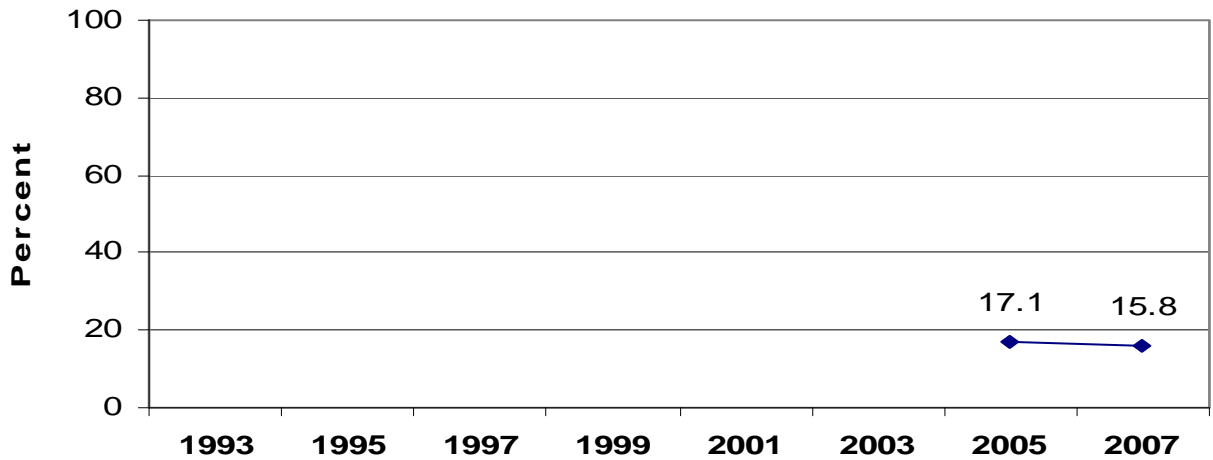
Among students who reported current cigarette use, the percentage who ever tried to quit smoking cigarettes during the past 12 months (2001–2007)*



*Note: Question first appeared on the 2001 Wisconsin YRBS
2007 Wisconsin Youth Risk Behavior Survey

Wisconsin Department of Public Instruction

Percentage of students who smoked cigars, cigarillos, or little cigars on 1 or more of the past 30 days (2005–2007)*

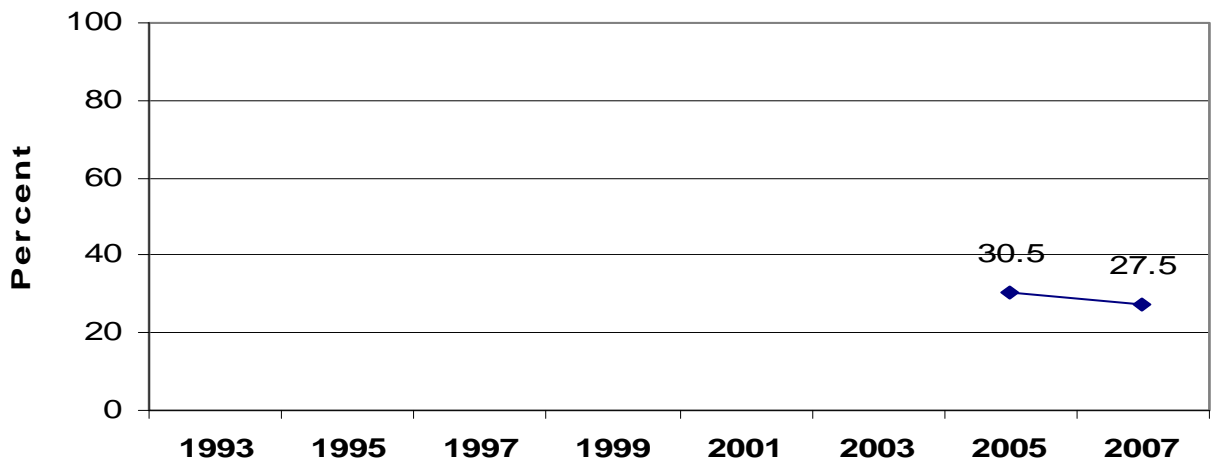


*Note: Question first appeared on the 2005 Wisconsin YRBS. The difference between 2005 - 2007 is statistically insignificant.

2007 Wisconsin Youth Risk Behavior Survey

Wisconsin Department of Public Instruction

Percentage of students who smoked cigarettes or cigars or used chewing tobacco, snuff, or dip on 1 or more of the past 30 days (2005–2007)*



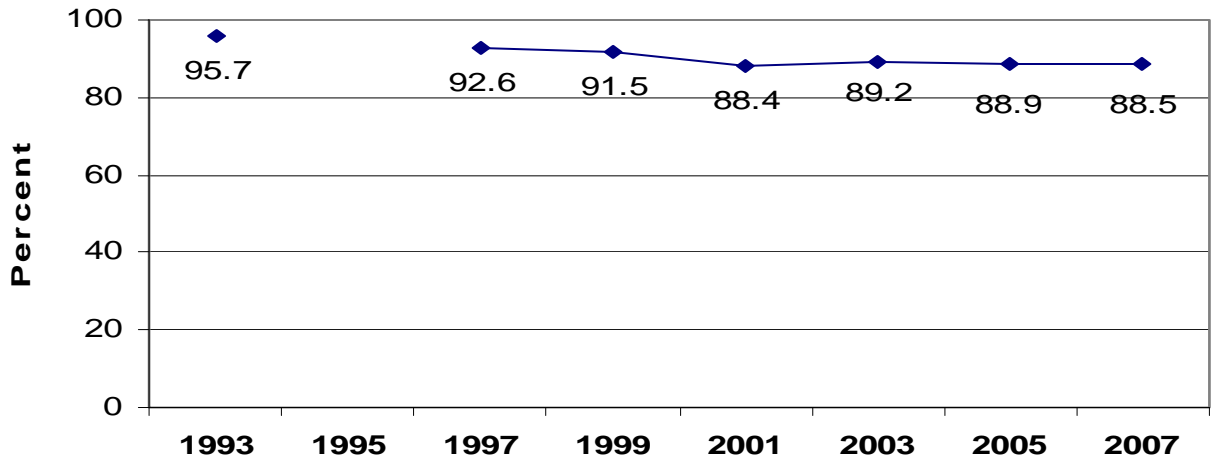
*Note: Question first appeared on the 2005 Wisconsin YRBS. The difference between 2005–2007 is statistically insignificant.

2007 Wisconsin Youth Risk Behavior Survey

Wisconsin Department of Public Instruction

Section VII: Traffic Safety

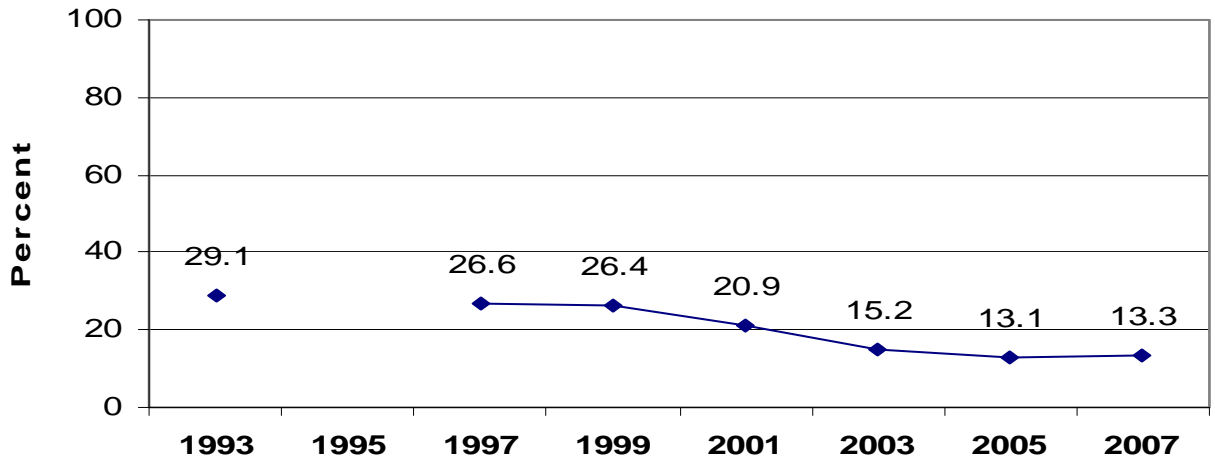
Among students who rode a bicycle during the past 12 months, the percentage who never or rarely wore a bicycle helmet (1993–2007)



Data from 1995 unavailable
2007 Wisconsin Youth Risk Behavior Survey

Wisconsin Department of Public Instruction

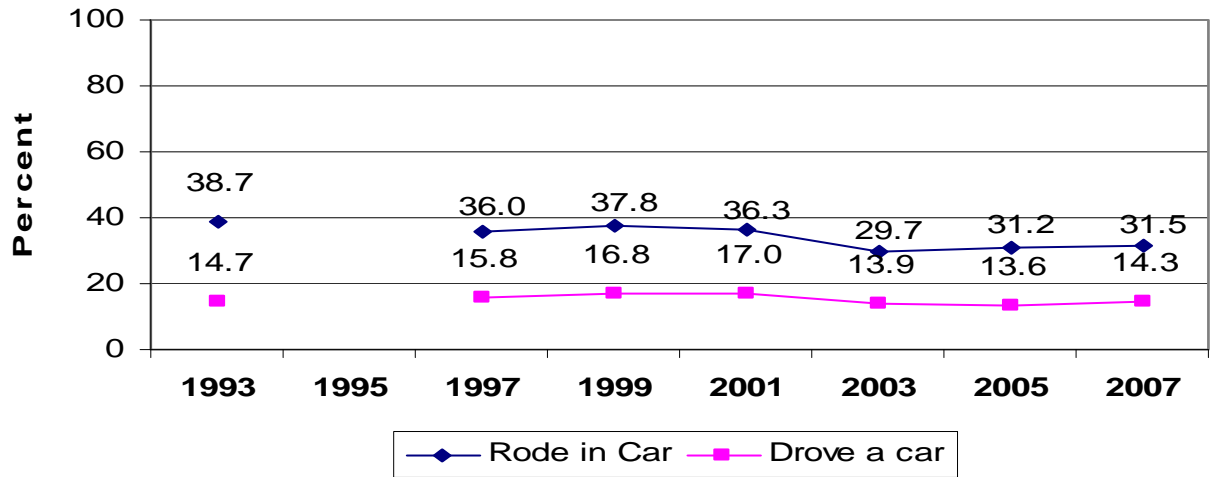
Percentage of students who never or rarely wore a seat belt when riding in a car driven by someone else (1993–2007)



Data from 1995 unavailable
2007 Wisconsin Youth Risk Behavior Survey

Wisconsin Department of Public Instruction

Percentage of students who, in the past 30 days, rode in a car with a driver who had been drinking, or drove a car when they had been drinking (1993–2007)*



*Note: For students who drove a car when they had been drinking, the trend increased between 1993 and 2001 but has since decreased to the 1993 level.

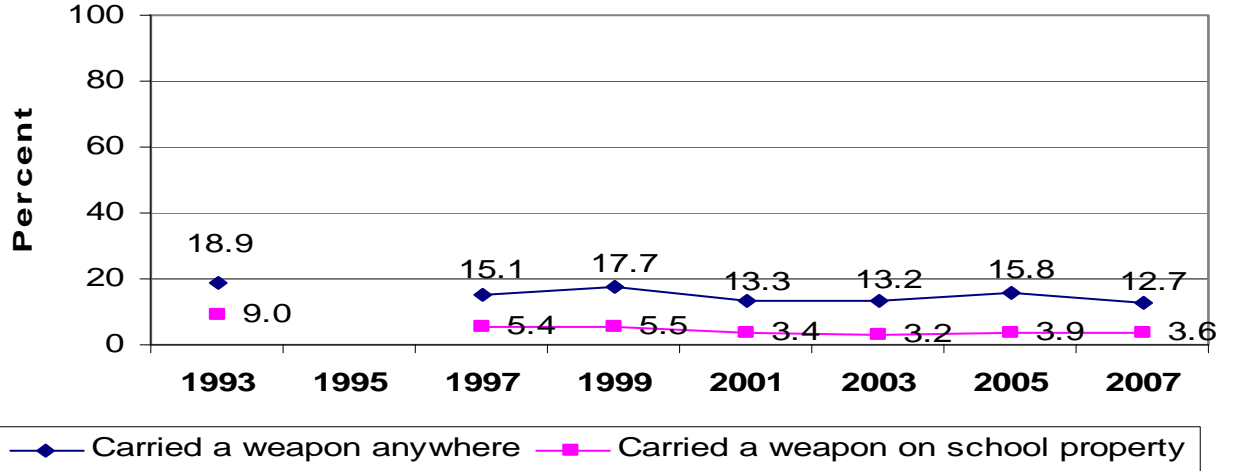
Data from 1995 unavailable

2007 Wisconsin Youth Risk Behavior Survey

Wisconsin Department of Public Instruction

Section VIII: Weapons and Violence

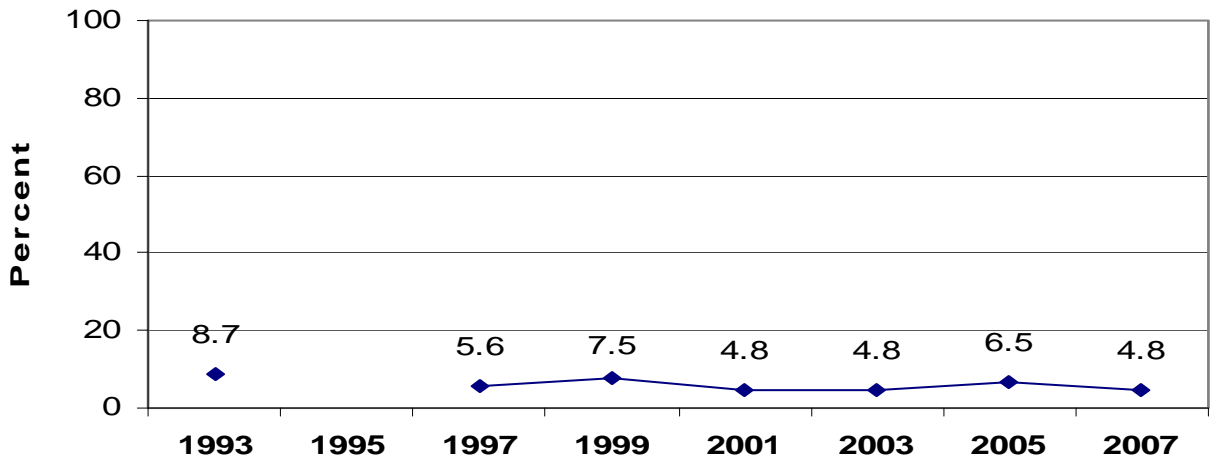
Percentage of students who, in the past 30 days, carried a weapon, such as a gun, knife, or club anywhere or on school property (1993–2007)



Data from 1995 unavailable
2007 Wisconsin Youth Risk Behavior Survey

Wisconsin Department of Public Instruction

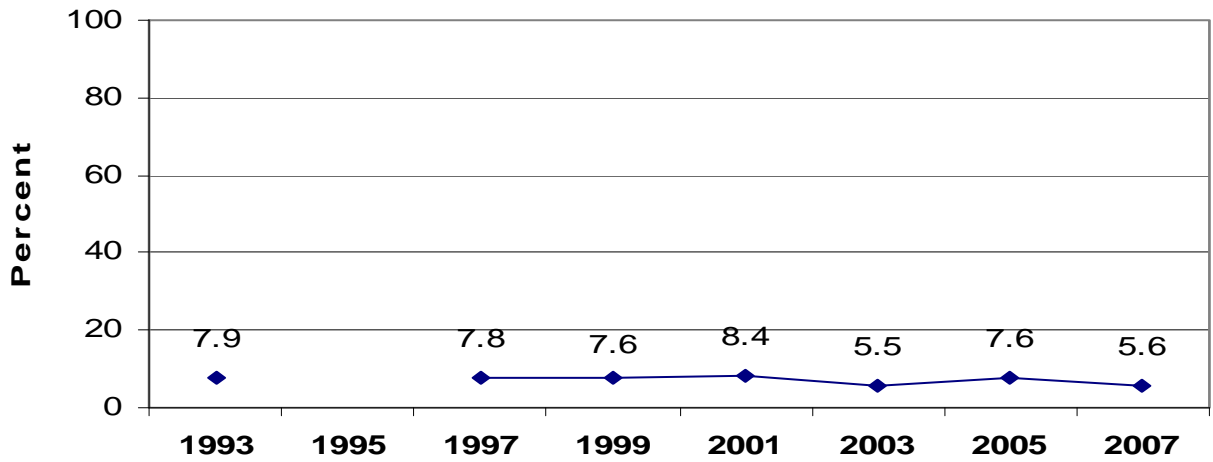
Percentage of students who carried a gun on one or more of the past 30 days (1993–2007)



Data from 1995 unavailable
2007 Wisconsin Youth Risk Behavior Survey

Wisconsin Department of Public Instruction

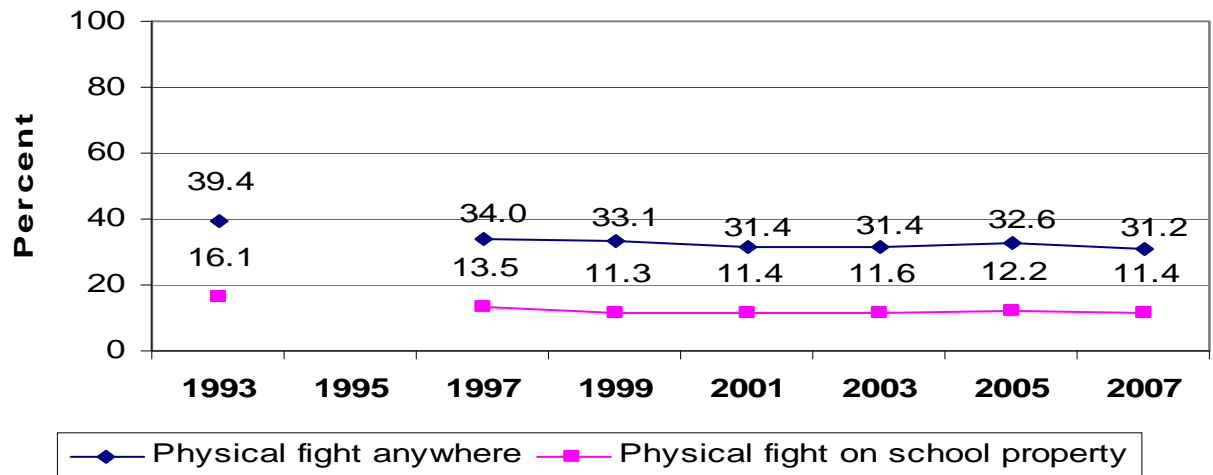
Percentage of students who had been threatened or injured with a weapon such as a gun, knife, or club on school property one or more times during the past 12 months (1993–2007)



Data from 1995 unavailable
2007 Wisconsin Youth Risk Behavior Survey

Wisconsin Department of Public Instruction

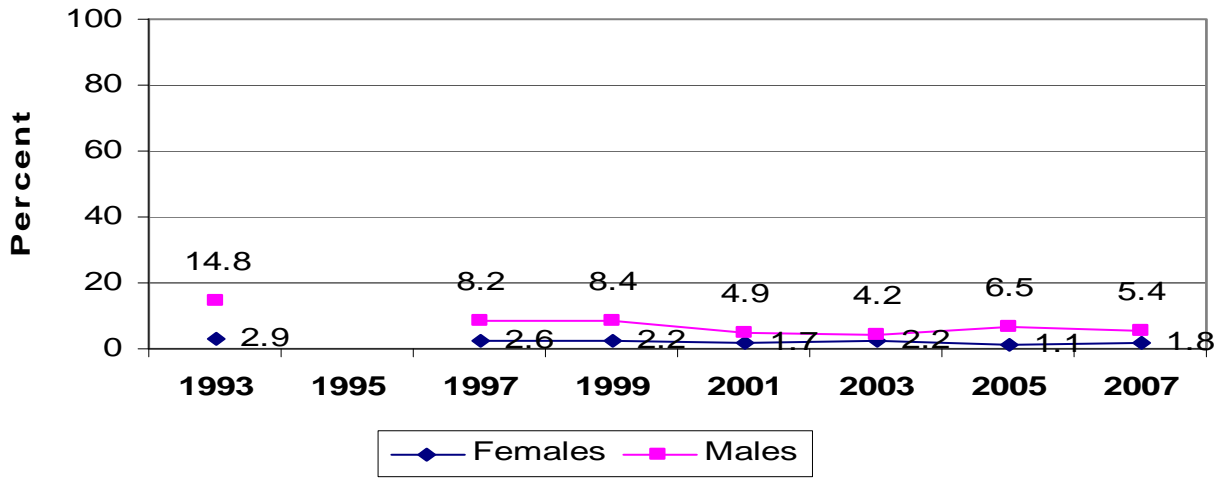
Percentage of students who were in a physical fight anywhere, or in a fight on school property, in the past 12 months (1993–2007)



Data from 1995 unavailable
2007 Wisconsin Youth Risk Behavior Survey

Wisconsin Department of Public Instruction

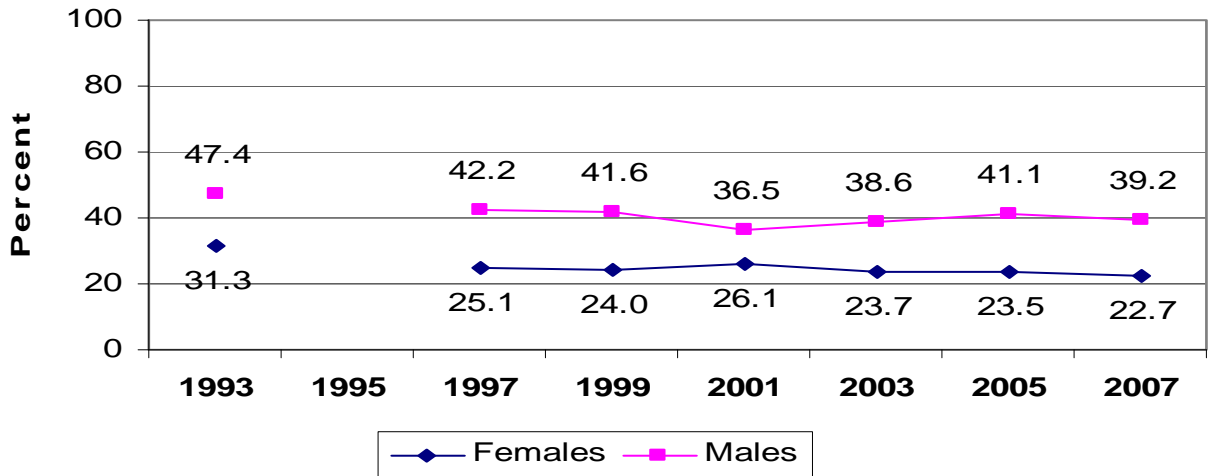
Percentage of students who carried a weapon such as a gun, knife, or club on school property on 1 or more of the past 30 days, by gender (1993 - 2007)



Data from 1995 unavailable
2007 Wisconsin Youth Risk Behavior Survey

Wisconsin Department of Public Instruction

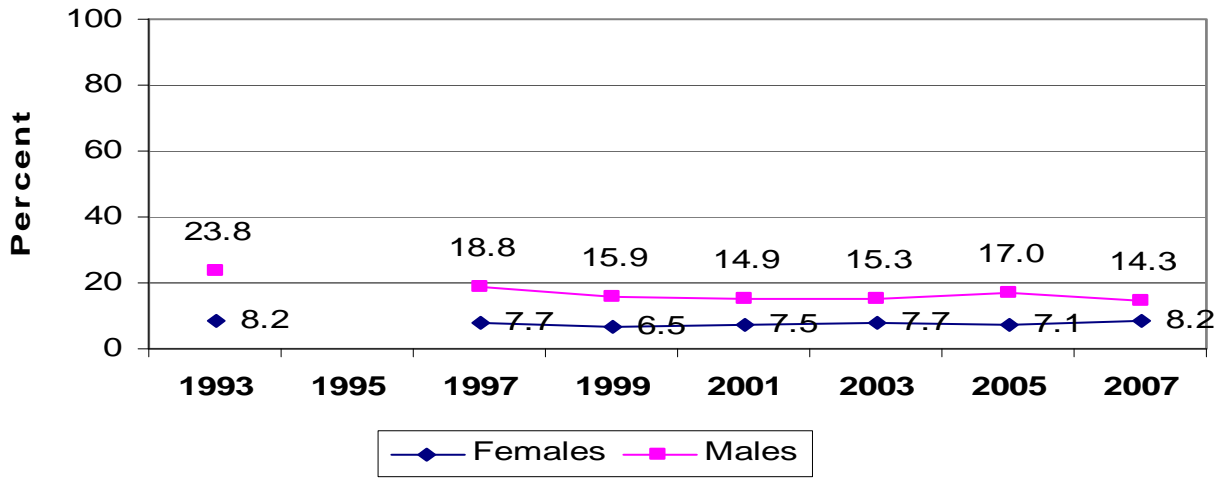
Percentage of students who were in a physical fight 1 or more times during the past 12 months, by gender (1993–2007)



Data from 1995 unavailable
2007 Wisconsin Youth Risk Behavior Survey

Wisconsin Department of Public Instruction

Percentage of students who were in a physical fight on school property one or more times during the past 12 months, by gender (1993-2007)*

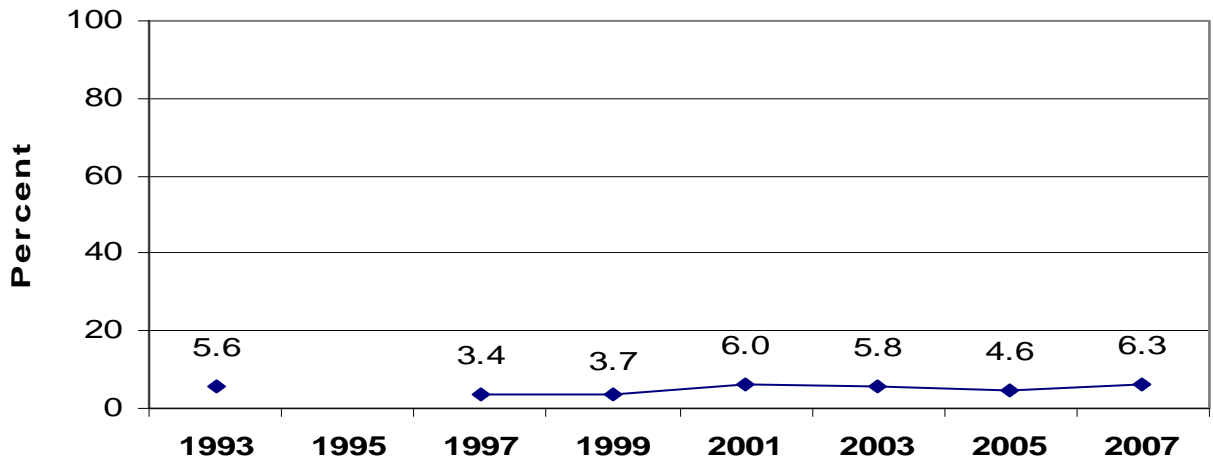


*Note: The long-term trend for males is decreasing. The long-term trend for females is unchanged.
Data from 1995 unavailable

2007 Wisconsin Youth Risk Behavior Survey

Wisconsin Department of Public Instruction

Percentage of students who did not go to school on 1 or more of the past 30 days because they felt they would be unsafe at school or on their way to or from school (1993-2007)*

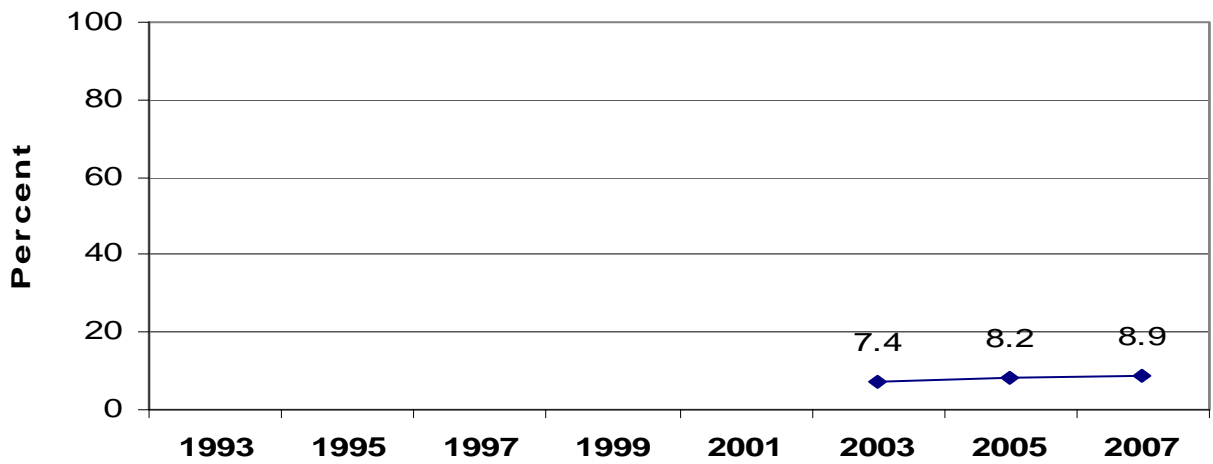


*Note: The long-term trend is unchanged.
Data from 1995 unavailable

2007 Wisconsin Youth Risk Behavior Survey

Wisconsin Department of Public Instruction

Percentage of students who were ever hit, slapped, or physically hurt on purpose by their boyfriend or girlfriend during the past 12 months (2003–2007)*



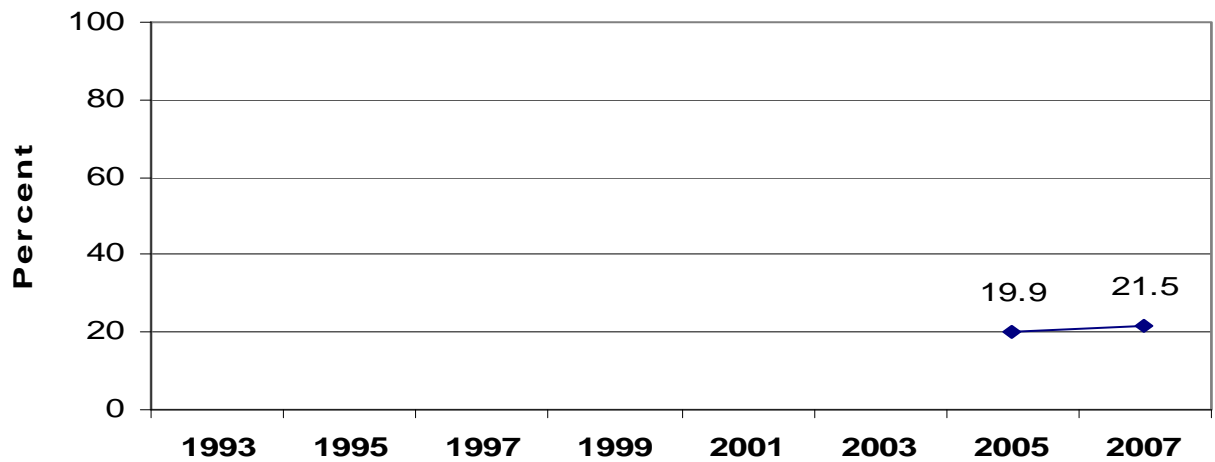
*Note: Question first appeared on the 2003 Wisconsin YRBS. The long-term trend is unchanged.

2007 Wisconsin Youth Risk Behavior Survey

Wisconsin Department of Public Instruction

Section IX: Asthma

**Percentage of students who had ever been told by a doctor or nurse that they had asthma
(2005–2007)***



*Note: Question first appeared on the 2005 Wisconsin YRBS. The change between 2005–2007 is statistically insignificant.

2007 Wisconsin Youth Risk Behavior Survey

Wisconsin Department of Public Instruction