

2023-24 REPORT CARDS AT-A-GLANCE

SCHOOL/DISTRICT INFORMATION ¹

School or district information, displayed towards the top of the front page, provides important context for reviewing the report card. These descriptive data include the grade span, student demographics, enrollment count, and (for public schools/districts) percent of students who were open-enrolled or (for choice schools) the percent of students participating in the choice program.

OVERALL SCORE & RATING ³

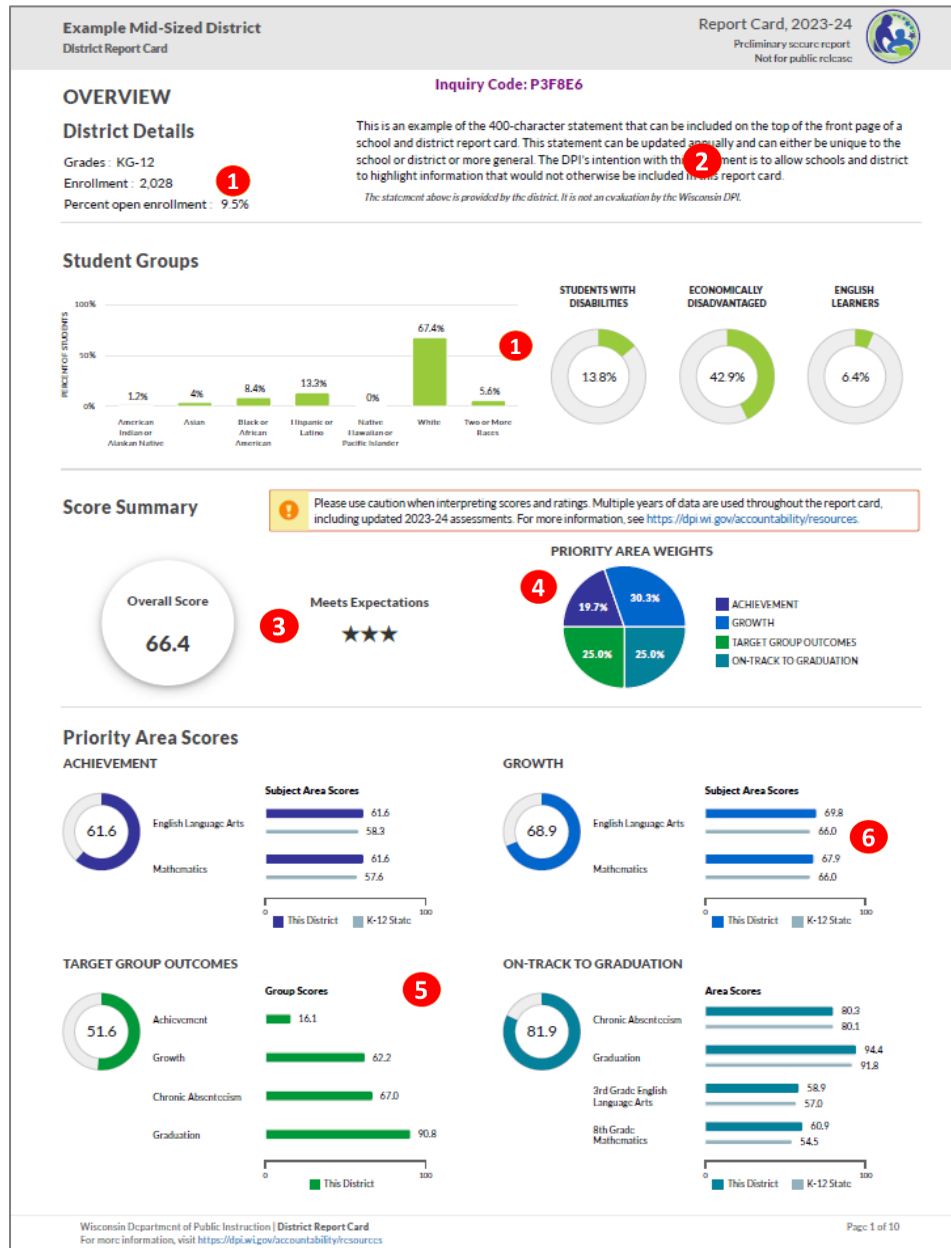
Each school or district receives an Overall Score from 0 to 100. This score is calculated by combining the weighted average of the Priority Area scores. The Overall Score places a school or district in one of five rating categories ranging from Significantly Exceeds Expectations to Fails to Meet Expectations. A five-star rating system is also provided.

STATE COMPARISON DATA ⁶

The priority area sections on the front page include state comparison bars, which are colored gray. For schools, state comparisons are based on one of six broad grade bands: K-5, K-8, K-12, 6-8, 6-12, and 9-12. State-level component scores are given for comparison purposes only and do not factor into the accountability scores or ratings.

COURSE DATA

Report cards for public schools/districts with grades 9-12 contain arts and postsecondary preparation course data on the last two pages of the report card.



OPTIONAL STATEMENT ²

Schools and districts have the option to submit a descriptive statement that appears in the top right corner of the front page.

PRIORITY AREA WEIGHTING ⁴

Next to the space for the rating category is a pie chart displaying the weighting used when calculating overall scores. The weighting for Achievement and Growth varies depending on the percent of economically disadvantaged students in the school or district. For more information, see the [online weighting calculator](#).

PRIORITY AREA SCORES ⁵

On the bottom half of the front page, scores are provided for the four priority areas, along with bar charts showing priority area component scores.

Achievement: students' level of knowledge and skills attained compared against state academic standards in English language arts (ELA) and mathematics.

Growth: how rapidly students are gaining knowledge and skills from year to year, focusing on the pace of improvement in students' performance.

Target Group Outcomes: outcomes for students with the lowest test scores in their school - the Target Group. Outcomes are displayed for achievement, growth, chronic absenteeism, and attendance or graduation rate.

On-Track to Graduation: how successfully students are achieving educational milestones that lead to later success.

