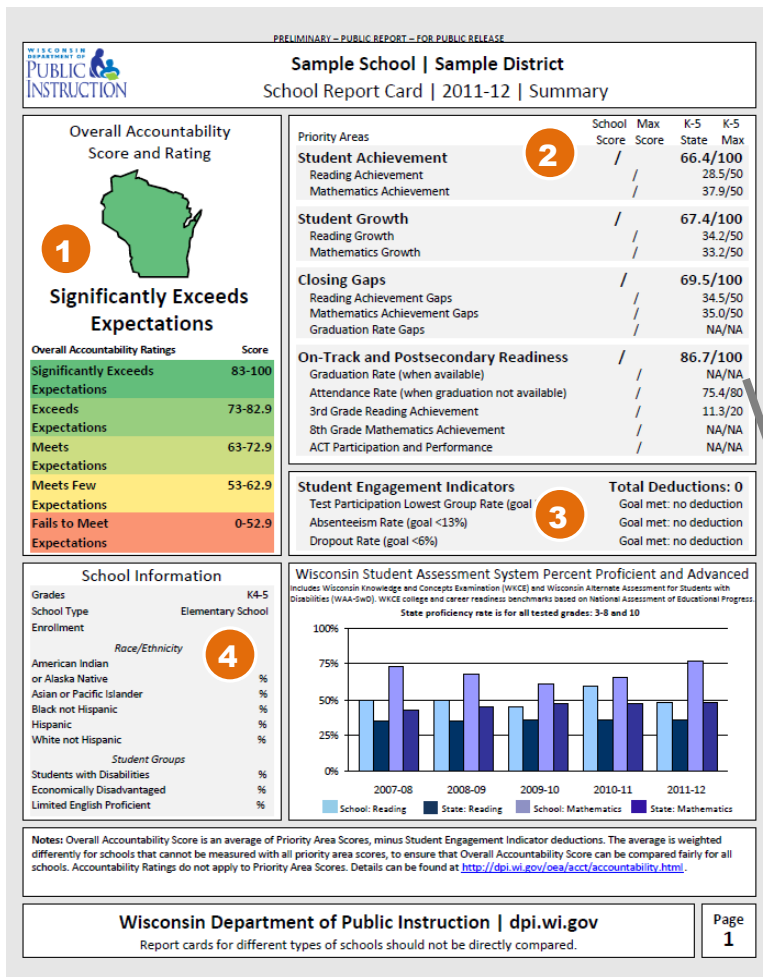


SCHOOL REPORT CARD AT A GLANCE



1 OVERALL ACCOUNTABILITY SCORE AND RATING

A school's Overall Accountability Score (0-100 points) is calculated by combining the Priority Areas weighted average and the Student Engagement Indicators deductions. This Overall Score determines its placement in one of the five rating categories: Significantly Exceeds Expectations, Exceeds Expectations, Meets Expectations, Meets Few Expectations and Fails to Meet Expectations.

2 PRIORITY AREAS

There are four individual Priority Areas that are each made up of multiple components. These Priority Areas are combined, based on school type, to form a weighted average. Combining these numbers is more complicated than adding them together – Wisconsin has schools of many different sizes, grade levels, and student populations.

The State Score is given for informational purposes only. It does not factor into the School Score.

3 STUDENT ENGAGEMENT INDICATORS

A school will receive deductions for not meeting a Student Engagement Indicator goal. These deductions will be subtracted from the Priority Areas weighted average.

OVERALL ACCOUNTABILITY SCORE = PRIORITY AREAS WEIGHTED AVERAGE – STUDENT ENGAGEMENT INDICATORS

4 Other Report Card Data

The School Information and Wisconsin Student Assessment System (WSAS) chart are presented here for informational purposes. The WSAS chart is a five-year grade specific history of the percent of a school's students who were proficient on reading or math assessments. These proficiency benchmarks, starting in 2011-12 have been aligned with higher college and career readiness benchmarks.

- ✓ The School Report card is a product of Wisconsin's new accountability system and is a part of DPI's Agenda 2017 - a five year strategic plan to make every child a graduate, college and career ready.
- ✓ This is a complex system that uses multiple measures to help school staff identify both areas of strength and where schools need to improve.
- ✓ To protect student privacy, data for groups of fewer than 20 students are replaced by asterisks on public report cards.
- ✓ NA is used when data are Not Applicable.
- ✓ To learn more about the School Report Card, please visit: <http://dpi.wi.gov/oea/acct/accountability.html>