



Wisconsin Forward Exam Q&A Session

January 2021

● ● ● Forward Exam Q & A Session



Connecting to Audio

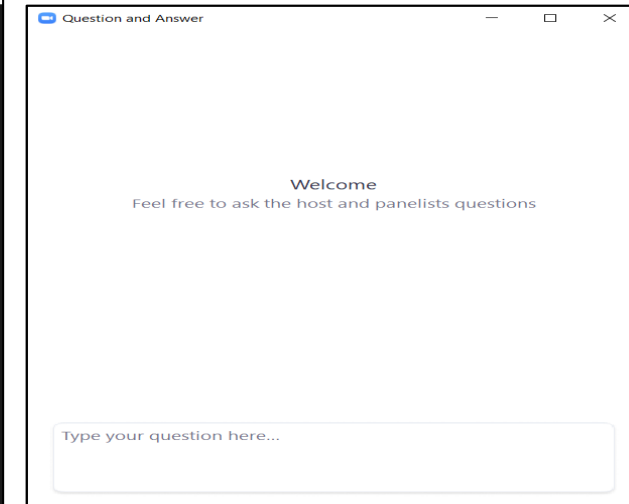
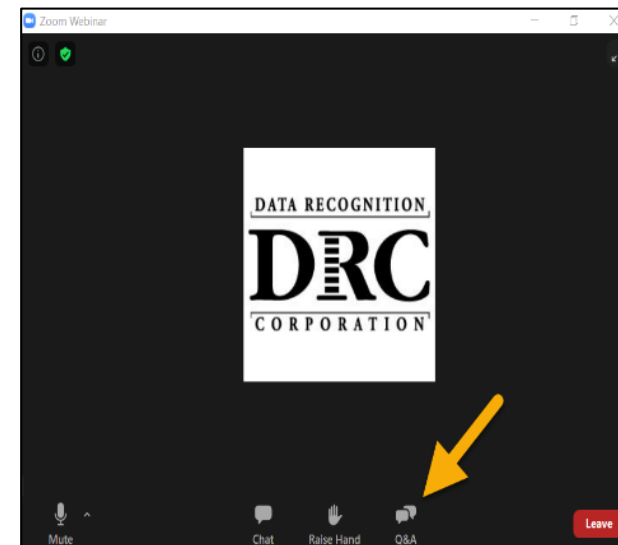
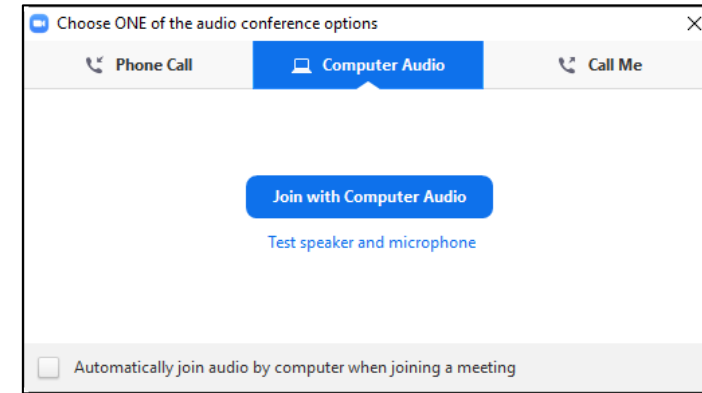
- Call in using your computer audio (preferred) or have Zoom call you
- All participants are muted upon entry

Asking Questions

- Use Q&A feature to submit questions
- We will monitor the Q&A and will answer questions during the session

Accessing This Presentation

- A recording of this session will be posted on the DRC INSIGHT Portal



● ● ● Training Materials and Resources



- District Technology Coordinators (DTC) and School Technology Coordinators (STC)
 - Training for New DTCs
 - Training Updates for Experienced DTCs
 - Technology User Guide
- District Assessment Coordinators (DAC) and School Assessment Coordinators (SAC)
 - Training for New DAC/SAC
 - Training Updates for DAC/SAC
 - Test Administrator (TA) Training
- All resources are available on the DRC INSIGHT Portal and DPI website

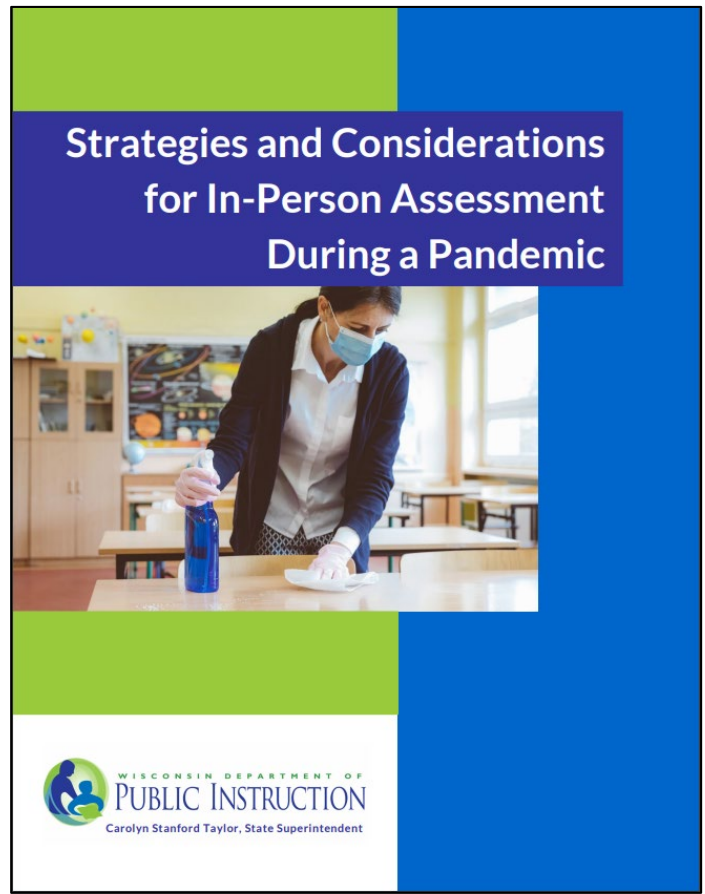
● ● ● New DPI Resource



The Strategies and Considerations for In-Person Assessment During a Pandemic provides considerations for district and school leaders to plan and safely administer assessments this spring.

- Test participation
- Scheduling
- Technology
- Transportation
- Classroom and materials preparation
- Staff, student, and family preparation

Available at: <https://dpi.wi.gov/assessment/COVID-19>



● ● ● Prioritization



- We will monitor and answer questions as they are entered in the Q&A feature.
- We will focus on answering more general questions that would be relevant to others in the session.
- Specific questions related to your district or situation will be addressed if there is time at the end or you may be asked to send your question to osamail@dpi.wi.gov or WIHelpdesk@datarecognitioncorp.com

● ● ● Examples of Possible Questions



- How do I confirm all students have accessibility features assigned prior to testing?
- How do I confirm all devices are set up for testing?
- When can I start printing test tickets?
- Where can I find information about not-tested codes?
- What is Google's policy on supporting older Chrome devices?
- Are COS Service Devices required?
- Where is the best place to locate a COS Service Device?



Wisconsin Forward Help Desk

Technology Related Questions

DRC Customer Service
(800) 459-6530
7:00am-5:00pm CT

WIHelpdesk@datarecognitioncorp.com

● ● ● DPI Contact Information



Alison O'Hara

Forward Exam Program Manager

alison.ohara@dpi.wi.gov

608-266-5182

Jennifer Teasdale

Education Program Specialist

jennifer.teasdale@dpi.wi.gov

608-266-5193

Phil Cranley

Data, Student Demographics, and Privacy Issues

philip.cranley@dpi.wi.gov

608-266-9798

Duane Dorn

Test Security and Choice students

duane.dorn@dpi.wi.gov

608-267-1069

If you are not receiving the assistance you need from the helpdesk please contact DPI - (Alison or Jennifer) - so we may help get your situation resolved.



Please send additional questions to Alison or Jennifer, or to osamail@dpi.wi.gov

QUESTIONS?