

# PWHS SENIOR PARENTS' NIGHT

You are cordially invited to attend the PWHS  
Senior Parents' Night presented by the PWHS  
Counseling Department

**Location:** Port Washington High School  
Choir Room

**Date:** Wednesday, September 17<sup>th</sup>

**Time:** 6:00 PM

**Topics to be presented:**

College Application Process

Important Dates/Deadlines

Financial Aid Information

Parent Questions

Any questions, please call the counseling office at  
262-268-5525



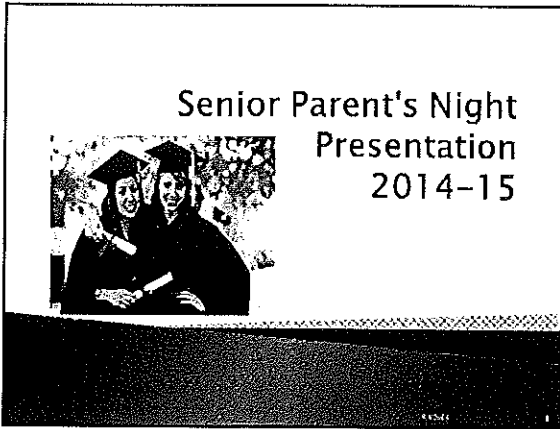
# Agenda - Individual student meeting

## Senior Meeting 2014-15

1. **ACT/SAT Information** – 2014-15 Test Dates for ACT  
October 25, December 13, February 7, April 18, and June 13  
Register online at [www.actstudent.org](http://www.actstudent.org)  
SAT [www.collegeboard.org](http://www.collegeboard.org)
2. **FAFSA** (Free Application for Student Aid) - Grant, Loan, or Work Study. Can apply on line at [www.fafsa.ed.gov](http://www.fafsa.ed.gov) after Jan. 1<sup>st</sup>.  
January 12<sup>th</sup> Financial Aid Night Grafton High School 7:00 PM
3. **Local Scholarships** – Application available in December. Listen to announcements when to pick up. Announced at commencement.
4. **Scholarship File** – Blue folder in counseling office. Check every week.
5. **Internet Information on Scholarships** –
  - \*NASFAA/Peterson's – [www.collegequest.com](http://www.collegequest.com)
  - \*FastWeb Scholarship Search – [www.fastweb.com](http://www.fastweb.com)
  - \*College Board Scholarship Search – [www.collegeboard.org](http://www.collegeboard.org)
  - \*Schoolsoup – [www.schoolsoup.com](http://www.schoolsoup.com)
6. **College & Technical Colleges** (Preview days, Open Houses, and Tours- <http://uwhelp.wisconsin.edu> ) Listen to and read announcements for college rep visits.
7. **College Fair** – Sept. 28<sup>th</sup>, Wisconsin Center in Milwaukee  
Pre- register at [www.gotomyncf.com](http://www.gotomyncf.com)
8. **Application Process** - (On Line preferred, but will still accept paper)  
Begins September 1<sup>st</sup>. <https://apply.wisconsin.edu> for UW (\$44.00 application fee), [www.privatecollegezone.org](http://www.privatecollegezone.org) for private universities (application fee college dependent), [www.witechcolleges.com](http://www.witechcolleges.com) for tech colleges (\$30.00 application fee). **Make an appointment with counselor to send transcript.**



example - Senior Parent's night PowerPoint Presentation. Also provided - question and answer time and additional reference material.



---

---

---

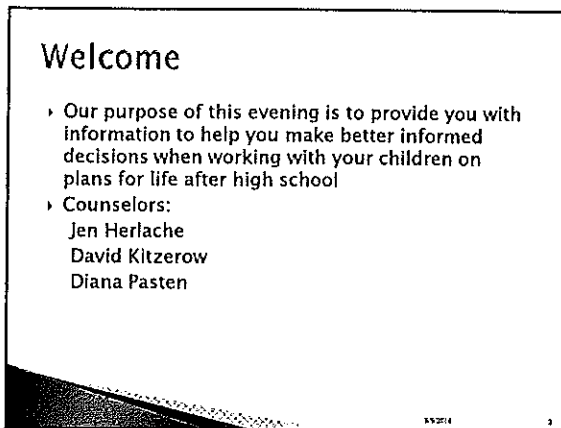
---

---

---

---

---



---

---

---

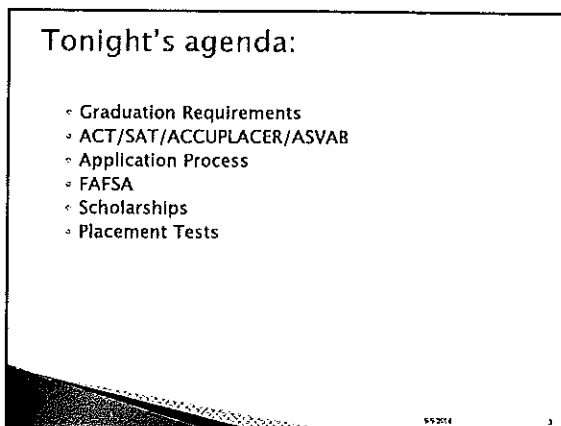
---

---

---

---

---



---

---

---

---

---

---

---

---

Involved in your school career - equals  
 networking - building skills, relationships  
 Leadership - work with others  
 • Leadership experience

**Graduation Requirements:**

- › 24 credits to graduate
- › Communications - 4 Credits
- › Math - 3 Credits Including Algebra 1
- › Science - 2 Credits
- › Social Studies - 3 Credits
- › Health - ½ Credit
- › PE - 1 ½ Credits
- › Required Electives - Students must earn at least ½ credit in 3 out of 4 following areas:
  - \* Fine Arts
  - \* Technology Education
  - \* Computer Intensive
  - \* Foreign Language

---

---

---

---

---

---

---

---

**Options after high school**

- › Work
- › Military
- › Technical programs
- › College




---

---

---

---

---

---

---

---

**ACT**

- › ACT is the Preferred test for the Midwest.
- › Can take it as many times as you want. Colleges accept the highest score.
- › Play close attention to College Entrance Requirements if the Writing portion is required - extra fee.
- › Register at [www.actstudent.org](http://www.actstudent.org)
- › 2014-15 Test dates
  - October 25
  - December 13
  - February 7
  - April 18
  - June 13

---

---

---

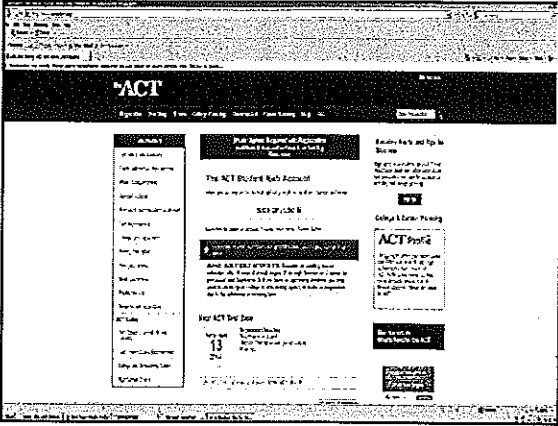
---

---

---

---

---



---

---

---

---

---

---

---

---

---

---

### SAT Reasoning Test

- › Preferred test for East Coast and West Coast Schools
- › Areas tested are Critical Reading, Mathematics, & Writing  
Some schools require subtests of the SAT – check the college entrance requirements
- › Register at [www.collegeboard.org](http://www.collegeboard.org)

8/20/14

---

---

---

---

---

---

---

---

---

---

### Accuplacer

- › Placement test given by the Technical Colleges to see what it is the student knows and may still need to know.
- › Technical College will provide information on test dates after applying to their school.

8/20/14

---

---

---

---

---

---

---

---

---

---

## ASVAB

- › Military test to determine program/occupational eligibility.
- › See your military recruiter for test times.

9/2/14 13

---

---

---

---

---

---

---

---



**Remember**  
Test scores are only **one factor** used for college **admission** and **scholarship decisions**.

---

---

---

---

---

---

---

---

## Applying for Admission

- Electronic application preferred over paper  
<https://apply.wisconsin.edu>
- All campuses have application priority dates or deadlines (some are program specific).  
Avoid late applications!
- \$ 44.00 Application fee
- Transcripts
- Test Scores

"Ask Tyler" Videos  
[uwhelp.wisconsin.edu/videos](http://uwhelp.wisconsin.edu/videos)



---

---

---

---

---

---

---

---





## Admission to UW Campuses

- College preparatory coursework taken in high school
- High school rank in class
- Grade point average
- Standardized test results
- Other pertinent academic information
- Student experiences, work experiences, leadership qualities, motivation, community service, special talents and /or other factors may also be considered

---

---

---

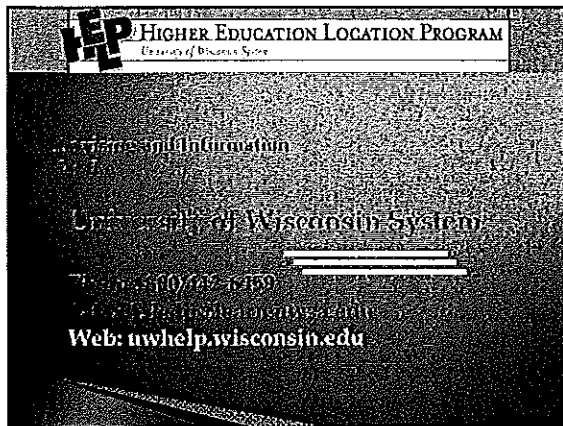
---

---

---

---

---



---

---

---

---

---

---

---

---



---

---

---

---

---

---

---

---

## Application Process Private Universities

- › Can apply at the school's web site (some schools encourage applying on line by waiving the application fee)
- › Can still do paper copy.
- › Print out counselor form and set up an appointment to see your counselor.
- › The counselor will fill out the appropriate sections, attach an official transcript, and send it for the student.

4/5/2014

19

---

---

---

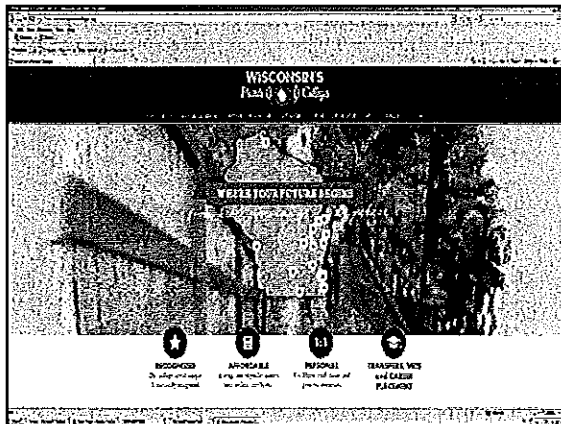
---

---

---

---

---



---

---

---

---

---

---

---

---

## Application Process Technical Colleges

- › Can apply on line at the school's web site. Notify counselor to have an official transcript sent. Specify which technical college to send it to. \$30.00 Application Fee payable to college
- › May do paper copy. Set up an appointment to bring the application to your counselor. The counselor will attach an official transcript and send it for the student.

4/5/2014

21

---

---

---

---

---

---

---

---




---

---

---

---

---

---

---

---

---

---

**Factors in Admissions Decisions**

THE ESSAY:  
Can it make a difference?

- ▶ More competitive = more important
- ▶ Can be a factor for gray zone applicants
- ▶ Can provide insight to explain an unusual or extraordinary situation

---

---

---

---

---

---

---

---

---

---

**Factors in Admissions Decisions**

THE ESSAY: What does it contribute?

- ▶ How well you write
- ▶ What and how you think
- ▶ Gives a voice to the application
- ▶ Lets the admissions committee see that you took the application seriously

---

---

---

---

---

---

---

---

---

---

### Tips to Remember

- › The application is how the admissions committee gets to know you
- › Present your best work, follow directions
- › Allow your school counselor time to submit required credentials
- › Stay in touch with the Admissions Office regarding the completion of your application
- › The Three B's: Be on Time, Be Careful, Brag

---

---

---

---

---

---

---

---

### Highly encourage you to do a college visit

- › Students will know if it is a right fit.
- › Have an opportunity to see the campus in action
- › Speak with an admission counselor
- › Tours run by students

---

---

---

---

---

---

---

---

### FAFSA

- › Free Application For Student Aid
- › Do after January 1<sup>st</sup> 2015
- › Determines financial eligibility for grants, loans, or work study.
- › Attend the Financial Aid Night on January 12<sup>th</sup> 7:00 PM at Grafton High School.

---

---

---

---

---

---

---

---

## Financial Assistance

The FAFSA: Free Application for Federal Student Aid  
[www.fafsa.ed.gov](http://www.fafsa.ed.gov)

In addition to both federal and state aid programs, private colleges also have institutional funds for eligible students. All need-based monies are allocated by filing the FAFSA.

- ▶ The FAFSA can be filed starting January 1<sup>st</sup> of the senior year; Recommend filing by early February of senior year
- ▶ In fall of senior year, apply for a Personal Identification Number (PIN) – both parent and student need a PIN:  
[www.pin.ed.gov](http://www.pin.ed.gov)

---

---

---

---

---

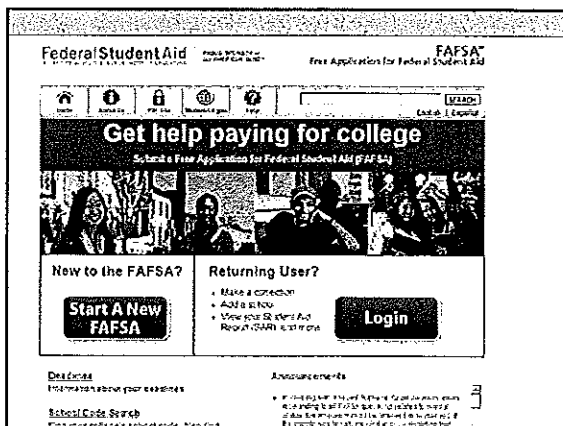
---

---

---

---

---



---

---

---

---

---

---

---

---

---

---

## Scholarships

- ▶ Local Community Scholarship  
Over \$150,000 given to our students.  
Pick up applications in early December – Listen to announcements!  
Usually due in February.
- ▶ Blue Scholarship File in Guidance Office
- ▶ Internet sites [www.fastweb.com](http://www.fastweb.com) or [www.SchoolSoup.com](http://www.SchoolSoup.com)

---

---

---

---

---

---

---

---

---

---

## Placement tests

- › Universities require placement tests to determine class selection.
- › For UW schools, may take them at locations around the state.
- › Does not matter where you take the test.
- › The University will notify the student as to how to sign up and locations.

19/2014 11

---

---

---

---

---

---

---

---

## Questions

19/2014 11

---

---

---

---

---

---

---

---

