



WISCONSIN DEPARTMENT OF
PUBLIC INSTRUCTION

[Website](#) | [Parents & Students](#) | [Schools & Educators](#) | [Libraries](#) | [Data & Media](#)

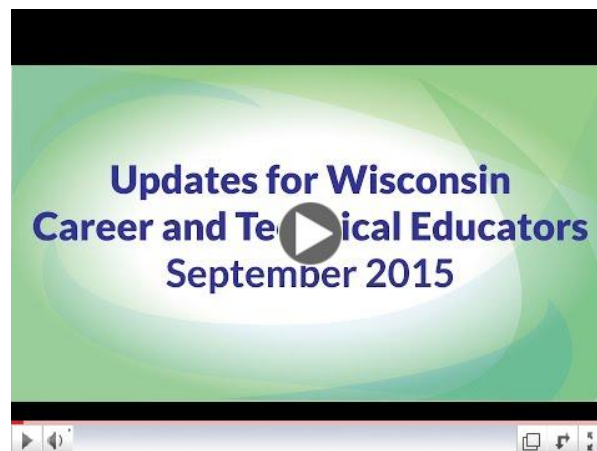


Notes from the Director

Sharon Wendt
Team Director
Career & Technical Education

Welcome Back!

Welcome back to another school year! This newsletter provides updates on current happenings in Career and Technical Education (CTE). There continues to be lots of exciting initiatives in CTE and we hope that you are able to use this information to continue promoting quality CTE programs. Check out our latest video update for "What's new in CTE" and we wish you the best for a great year!



September 2015 CTE Back to School Updates

[Click here to see "What's New" on our CTE Website](#)

Assistant Director, CTE

[Sara Baird](#) (608) 266-9609



Out of Office

Sara will be out on extended maternity leave with the birth of her child on Friday, August 28th. During Sara's absence, Sharon Wendt, CTE Director, and Christine Smith, Operations Program Associate, are assisting with her duties. Sara anticipates her return in early 2016.

Carl Perkins Grants

[Roselynn Bittorf](#) (608) 266-3922



Carl Perkins Application for 2016-17

The Perkins Application Committee has not finalized updates/revisions to the 2016-17 Perkins applications. There is a Perkins break out session scheduled at the ACP Leadership Conference on Monday, November 16 in Stevens Point. The consortium focused session is 2:00 p.m. to 3:00 p.m. and the single district session is 3:00 p.m. to 4:00 p.m. Information about this workshop is on our website at <http://dpi.wi.gov/acp/events/leadership-conference>.

End Of Year Report

Remember PI-1304 Program of Study/End-of Year Report is due on September 30, 2015. The form can be accessed at http://cte.dpi.wi.gov/cte_accountability.

Program Fiscal Report (PI-1086) Claims

Final claims for 2014-15 Carl Perkins applicants are due September 30, 2015. Quarterly claims for 2015-16 are due October 31, 2015. Instructions for completing the PI-1086 form can be found at http://sms.dpi.wi.gov/sms_pi-1086.

CTE PROGRAM AREAS

Google+ Communities

WISELearn, our state's educator portal, has created discipline-specific communities designed to support Wisconsin's educators. These social networks consist of professional learning communities where educators can connect, communicate, and collaborate.

Please encourage your CTE teachers to join this new platform for professional development.

Join our WISELearn CTE Communities at:

- [WI DPI Agriculture Education / FFA / WAAE](#)
- [WI DPI Business & IT Education / FBLA / WEBIT](#)
- [WI DPI Family & Consumer Science Ed / FCCLA / WFCE](#)
- [WI DPI Health Science Education / HOSA / HOPE](#)
- [WI DPI Marketing Education / DECA / WMEA](#)
- [WI DPI Technology & Engineering / SkillsUSA / WTEA](#)

Once your request is confirmed, you can access and enjoy your educator community. Within the community you can share your questions and answers with peers while connecting over the triumphs and challenges of teaching. We hope to see you there!

Business & Information Technology

[Dave Thomas](#) (608) 266-2348



B&IT

The [Wisconsin Educators of Business & Information Technology \(WEBIT\)](#) Annual Fall Conference is scheduled for October 8-9, 2015.

Visit <https://sites.google.com/site/2015webitconvention/home> for registration and convention details. DPI presentations at the convention will highlight the following:

- Disciplinary Literacy: How to implement Reading and Literacy in our B&IT Classrooms
- PPGs and SLOs with a vision on College & Career Readiness

- [Microsoft Information Technology Academy](#) & [Microsoft Office Specialist \(MOS\) Certifications](#) with [Certiport](#)

FBLA

Over 400 Wisconsin FBLA members and advisers participated in the National Leadership Conference this past June in Chicago. Checkout which Wisconsin FBLA members Stepped Up to the Challenge and placed in the [top 10 in the nation](#).

Schools desiring to receive FBLA communications at the start of the school year should register current contact information with the [FBLA-PBL National Office](#) and complete the [Wisconsin Local Chapter Contact Form](#).

FBLA chapters must register by October 6 to attend a regional [Fall Leadership Lab](#) and by November 6 to attend the [Wisconsin Fall Leadership Conference](#). In addition to student member participation, advisers will also receive professional development on site to support both B&IT and FBLA local program operations.

Marketing Management & Entrepreneurship

[Tim Fandek](#) (608) 267-9253



MME

The Wisconsin Marketing Education Association Fall Conference (WMEA) is scheduled for October 21-23, 2015, in Racine, WI at Gateway Technical College. Click [here](#) for conference information: online registration, tentative agenda, and hotel information. This will be the premier marketing, management, and entrepreneurship professional development opportunity in Wisconsin this year!

DECA

This past July, over 20 schools and over 200 DECA members attended the Chapter Opportunity Workshop; please click [here](#) to experience some of the outstanding conference highlights. In addition to this conference, please save the date and register for the upcoming [Emerging Leaders Conference](#) on November 8-9, 2015, in Wisconsin Dells. Shown below is our conference promotional video:



Emerging Leaders Conference Promo

[Click link to see more Wisconsin DECA resources and pictures](#)

Technology & Engineering

[Brent Kindred](#) (608) 266-2683



TE Fall In-services

We will again have the WTEA/DPI Technology and Engineering fall in-services this year. The in-services are a great professional development resources for all TE teachers. For more information about dates and locations, please visit our [TE Webpage](#)

October is Manufacturing Month

October is the time to celebrate manufacturing in Wisconsin. Join participating manufacturers, chambers of commerce, state agencies, and technical colleges in celebrating the importance of manufacturing in Wisconsin during October is Manufacturing Month. Partner with a local manufacturer for a plant tour or demonstration. Organize a manufacturing information open house through your career and technical education department.

Visit <https://www.wmc.org/programs/manufacturing-month> and http://te.dpi.wi.gov/te_october-manufacturing-month for more information.

Agriculture & Natural Resources

[Jeff Hicken](#) (608) 267-9255



Fall 2015 In-service Meetings

The Department of Public Instruction, the Wisconsin Technical College System, Cooperative Educational Service Agencies (CESA), and the Wisconsin Association of Agricultural Educators (WAAE) are partnering to sponsor this professional development opportunity.

This year the in-service meetings will include the following workshops:

- Educator Effectiveness
- DPI Updates
- WAAE Sectional Meetings and Best Practice Sharing of Ideas
- College and Career Readiness through Supervised Agriculture Experience's

THERE IS NO REGISTRATION FEE FOR PARTICIPANTS.

[In-Service Brochure](#) (includes all dates, locations, and phone numbers)

Health Science

[Janice Atkinson](#) (608) 266-2347



HOSA Fall Leadership Conferences Set for November

All HOSA-Future Health Professionals chapters are invited attend one of the Fall Leadership Conferences. They will be held on Monday, November 9, 2015 at Olympia Resort in Oconomowoc and on Tuesday, November 10, 2015 in the Dreyfus Center of University of Wisconsin - Stevens Point. Come to hear from healthcare professionals, learn about HOSA initiatives, get involved with community service projects, gain leadership skills, and meet HOSA members and advisors from across the state. Registration is due on October 16, 2015. For more information, please go to <http://hosa.dpi.wi.gov> or www.wihosa.org. Hope to see you there!

Workshops for Health Science and Family and Consumer Sciences

Workshops have been developed for teachers of Health Science and Family and Consumer Sciences. They are being hosted by CESA's across Wisconsin. For

information about dates and locations, please see information in Diane Ryberg's section of this newsletter.

Health Science Institute

On July 28-29, 2015, nearly 40 health science teachers attended the Health Science Institute sponsored by DPI. The first day of the professional development focused on encouraging more males to enroll in health science classes, thus closing the gender gap and working toward state compliance with non-traditional careers. Ben Williams, the Director of Special Projects at NAPE (National Alliance for Partnerships in Equity) facilitated as teachers explored the NAPE Micromessaging Framework, which acts as the foundation of the [NAPE Explore Nontraditional Careers Toolkit](#). The second day focused on using the career pathways model for course planning and implementation. Wisconsin educators, Dorothy Winger and Susan Blahnik, shared their newly-released textbook Introduction to Health Science - Pathways to Your Future and guided participants through content and activities. Other presenters represented Area Health Education Centers (AHEC), Wisconsin Health Science Professional Educators (WI HOPE), and Wisconsin HOSA-Future Health Professionals.

[Click here for more information about other aspects of the Health Science Institute](#)

Family & Consumer Science

[Diane Ryberg](#) (608) 267-9088



FCCLA Fall Leadership Academy

The Wisconsin Leadership Academy offers opportunities for students & advisers to learn from a featured keynote speaker and attend various breakout sessions coordinated via guest presenters and Wisconsin FCCLA state officers. FCCLA Regional Representatives also meet to prepare for competitive events hosted during Wisconsin FCCLA Regional & State Leadership Conferences. Registration information can be found at: <http://fccla.dpi.wi.gov/wla>

- October 13, 2015-UW-Stout
- October 16, 2015-American Family-Madison
- October 19, 2015-UW-Stevens Point

Child Care Conference

- [October 9, 2015 - Crowne Plaza-Madison](#)

Required for FCS teachers teaching the ACCT, IT, and CCT skills certificate programs. The DPI-approved Assistant Child Care Teacher Training (ACCT) program is an advanced-level vocational-occupational course. Teachers who teach ACCT possess the #210 Family and Consumer license and a #211 Child Services Vocational License. The #211 license requires 2,000 hours of family and consumer-related work experience, and 1,000 of those hours in the child services area. This related work experience must be in the child care industry that the students eventually will enter in the Early Childhood career pathways. Currently, Infant Toddler certification and Lead Teacher certification available in a State Certified Cooperative Program in Family and Consumer Education is also available through programming. This teacher training gives in-service with current updates in state child care rules and regulations.

FCS & HS Fall Workshops

Collaborate and network with colleagues:

- CESA 1 - [Pewaukee](#) (December 4, 2015)
- CESA 2 - [Whitewater](#) (March 10, 2016)
- CESA 4 - [West Salem](#) (October 30, 2015)
- CESA 5 - [Portage](#) (October 2, 2015)
- CESA 6, 7, 8, - [Oshkosh](#) (October 28, 2015)
- CESA 9 - [Tomahawk](#) (October 27, 2015)
- CESA 10 - [Chippewa Falls](#) (October 20, 2015)
- CESA 11 - [Turtle Lake](#) (October 23, 2015)

Workshop attendees need to bring:

- a computer with access to Google and Chrome (create a personal Gmail account if Google is unavailable in school district)
- extension cord and/or power strip
- a best practice resource to share as a link
- a copy of the 2013 WI Standards in Family and Consumer Sciences and/or Health Science Curriculum Guide

FCS Food Science/Science Equivalency

The Department of Public Instruction is committed to expanding opportunities for students to meet graduation requirements. In the Fall of 2010, Wisconsin released information about establishing local science equivalency credit to food science courses in Family and Consumer Sciences programs.

Career & Technical Student Organizations (CTSO)

CTSO Collaborative Teen Driving Safety Project

The Wisconsin 2015-16 CTSO collaborative project to improve teen traffic safety in Wisconsin aligns with national CTSO programs and competitive projects, and possible funding! Please see this [flyer](#) and [Cross Roads PowerPoint presentation](#) for complete information.



Our mission is to improve teen traffic safety in Wisconsin through student-directed educational activities that focus on at least one of these areas that pose the greatest risk to new drivers: 1) Distracted Driving 2) Seat Belt Use 3) Speeding 4) Impaired Driving 5) Passengers.

Each proposal will be scored by professionals in the area of teen traffic safety, and funding awards will be made based on selected criteria - see [rubric](#). Funding of up to \$1,000.00 will be offered based on the strength of the proposal, and awarded at the completion of activities to reimburse expenses.

To register a project proposal, please submit an application at <https://www.surveymonkey.com/r/536XX8X>.

Please also look for webinars to become available soon. Content will include quality proposals with reference examples and reinforcement of timelines but also include scheduled times that our Cross Roads representative will be available for conferencing. http://cte.dpi.wi.gov/cte_ctso

College & Career Readiness

Dual Enrollment



[Kevin Miller](#) (608) 267-3161



Course Options/Youth Options

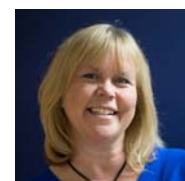
The June newsletter noted that Course Options might be repealed through the state budget. Instead, it remains and has gone through a few changes. The 2015-17 state budget bill revised the Course Options statute to address the impacts of another new law (whole grade sharing agreements) and to allow colleges and universities to charge students under certain circumstances when taking courses through Course Options. The whole grade sharing changes will not have an immediate impact as none of these agreements has yet been made. The impact of the other change will be more substantive.

The latter change noted above allows institutions of higher education (IHE) to charge students additional tuition and fees for courses that would award college credits if successfully completed. The amount of the additional tuition and fees would be determined by the IHE and the student's school district. This change primarily affects courses taught in a high school by a high school teacher where there is a program in place through which students can enroll in an IHE and earn college credits for the course. The change allows the costs to receive the college credits to be charged to the students rather than to the district. This change would also allow IHEs to charge students additional tuition and fees when they attend more traditional college courses for which districts are already paying the costs.

More details about the changes to Course Options can be found at the [Course Options website](#) where updated materials that reflect the statutory changes are or soon will be available. There have been no changes made to the Youth Options statute or rules, but you can find information about this program at the [Youth Options website](#).

Career Pathways

[Robin Kroyer-Kubicek](#) (608) 266-2022



Act 59: CTE Technical Incentive Grants

Funding for the Career and Technical Education Incentive Grants will continue as part of the 2015-17 biennial budget. The yearly \$3 million in funds was

transferred to the Department of Workforce Development (DWD). DPI will be working closely with our colleagues at DWD to help administer this program in a similar manner as was done this past year. More information will be coming shortly regarding claim forms for 2015 graduates who earned industry certifications.

State Certified Skill Standard Co-op Registrations

Emails with passwords have been sent to each school district's District Administrator. After login, read and sign the Assurances; then add teachers. Programs and students should be registered as soon as possible. Completers can be registered in bunches at the end of the year.

REMINDER: The deadline for submitting 2014-15 Coop Skills completers was August 31, 2015. The deadline for registering completers from the 2014-15 Employability Skills Standards Certificate program is December 15, 2015. Please contact [Denise Byrd](#) at 608-267-2274 if you have any questions about registration.

Academic and Career Planning (ACP)

25 ACP Pilot School Districts were selected from a pool of 61 applicants in June. These districts attended a summer in-person session in August to further learn about the expectations for ACP pilot year 2015-16. Staff lessons developed for ACP will be delivered at the pilot district schools and feedback captured to further enhance materials for training all districts in 2016-17.

The [CTE Coordinator Fall Conference](#) is combined this year with the 1st annual ACP Leadership Conference on November 16-17 in Stevens Point. It is our hope that CTE Coordinators and faculty will view this as an opportunity to bridge CTE to Academics and Counseling for careers. Using ACP as the frame, the ACP team hopes to train more school staff to understand that comprehensive career development and delivery is appropriate for ALL students- even those going on to University. Monday November 16 is pre-conference workshop (10 am - 4 pm) geared to district teams built on preparing and partnering for ACP implementation. Perkins Technical Assistance for CTE Coordinators and LVEC's will also be provided in special sessions on November 17 at 2-3 pm for Consortium's and at 3-4 pm for Single Districts. Tuesday November 17 is the full day ACP Leadership Conference (9 am - 4 pm) featuring a welcome by Dr. Tony Evers, two national keynote speakers, and five session strands. For more information: <http://dpi.wi.gov/acp/events/leadership-conference>

ACP software vendor evaluations and demonstrations were completed this summer. The Wisconsin Department of Administration (DOA) is handling all of the evaluation and selection process. After the vendor selection, there will be time required to secure the actual contract and to roll out the software to the pilot schools and other interested districts. We appreciate your patience and make sure to stay current on all ACP developments through Twitter ([@WisDPI_ACP](#)), G+ Community ([WI DPI Academic & Career Planning](#)) and Email (sign up at <http://dpi.wi.gov/acp> at bottom of page).

VISIT OUR WEBSITE

Website Migration

The Department of Public Instruction is migrating website domains. Please bear with us while we undergo this significant task. The URL of our main CTE web page will be changing from cte.dpi.wi.gov to dpi.wi.gov/cte *in the very near future*. *CTE related web pages will also be migrated in a similar fashion.* Redirects of all DPI web pages occurs for 90 days following each migration.



SUBSCRIBE TO LIST

FORWARD EMAIL

Copyright © 2015. All Rights Reserved.

[Forward this email](#)



This email was sent to christine.smith@dpi.wi.gov by christine.smith@dpi.wi.gov | [Update Profile/Email Address](#) | Rapid removal with [SafeUnsubscribe™](#) | [About our service provider](#).



Try it FREE today.

WI Dept of Public Instruction | 125 S Webster St | PO Box 7841 | Madison | WI | 53707-7841