



## Message from the Director

Sharon Wendt

Team Director

Career & Technical Education

### Greetings!

As the 2015-16 school year is coming to a close, we hope you had a great year providing students with various opportunities to experience the world of work, and develop and hone their academic, technical, and leadership skills. This newsletter is a brief synopsis of the current happenings in Career and Technical Education, with a specific focus on the summer professional development opportunities and upcoming activities.

I also wanted to let you know about the New Skills For Youth Grant. Wisconsin is excited to be part of a new career readiness initiative. Through a Phase I, \$100,000 grant funded by JPMorgan Chase in collaboration with the Council of Chief State School Officer (CCSSO) and Advance CTE, the goal for states participating in this grant is to strengthen career-focused education, starting in high school and ending with post-secondary degrees or credentials aligned with high skill jobs. For more information click [here](#).

We hope you enjoy the summer, and that you find time to relax and enjoy your favorite Wisconsin summertime activities!

[Click here to see "What's New" on our CTE Website](#)

Assistant Director, CTE  
[Sara Baird](#) (608) 266-9609



### Personal Financial Literacy Grants Awarded

The Governor's Council on Financial Literacy recently announced the 2016-2017 grant

recipients for the Personal Financial Literacy Innovation grants with funding from the Wisconsin Department of Financial Institutions. The Wisconsin Department of Public Instruction administers the [grant program](#). Eleven school districts were awarded funds to promote teaching of financial literacy in K-12 public school districts.

The focus of this year's grant is on student loan debt. The overall grant is intended to improve financial literacy among youth. Districts could also apply for funds to implement a personal finance graduation requirement.

[Here](#) is the press release from the Office of the Governor announcing the grant recipients.

## Carl Perkins Grants

### [Roselynn Bittorf](#) (608) 266-3922



Here are a few reminders regarding Carl Perkins Grants.

- Budget modifications for the 2015-16 year are due *June 30, 2016*.
- Final claims for the 2015-16 year are due on *September 30, 2016*.
- Although, the 2015-16 CPA End of Year Report (PI-1304) is not available yet. An email will be sent to you when this form is available.
- Please include the grant year in your email subject line when submitting emails to DPI regarding Perkins Grant. This will help to ensure your files are downloaded to the appropriate year's file.
- Please reference the 2016-17 [Carl Perkins application timeline](#). If your grant has not already been approved, please make every effort to return your application revisions to DPI as soon as possible. Our goal is to have applications approved and grant awards released in July.

## CTEERS

### [Don Vedder](#) (608) 267-2279



## CTEERS

A reminder that the Career and Technical Education Enrollment Reporting System (CTEERS) 2016 Composite Enrollment Report file is due on or before July 15th. The process and format for this report can be found within the [2016 CTEERS Field Manual](#).

## Business & Information Technology

[Dave Thomas](mailto:dave.thomas@dpi.wi.gov) (608) 266-2348



### Microsoft Imagine (IT) Academies in Wisconsin

Additional opportunities to participate in this program are currently available. Requests to participate as a Microsoft Imagine Academy can be submitted online at <http://dpi.wi.gov/imagine-academy/start>.

Get your school activated, and then register to attend one of the in-person training opportunities.

### National Center for Systems Security & Information Assurances - Innovation in Cyber Security Education

Visit <http://www.cssia.org/cssia-training.cfm> to view numerous events that are frequently sponsored by the Wisconsin Technical College System as well as other regional partners.

### Wisconsin Educators of Business & Information Technology

Our professional organization for the Wisconsin Educators of Business & Information Technology has released the following dates for future conventions: on October 6-7, 2016 in the Wisconsin Dells and October 12-13, 2017 in Stevens Point.

### FBLA

**MEMBERS "CONNECT" IN ATLANTA:** Competitive events winners will advance to compete against 14,000 other FBLA national members in Atlanta later in June. Congratulations to [read more...](#)

**PREPARE FOR 2016-2017:** We are excited to share that we have already booked dates for the 2016 regional Fall Leadership Labs on [read more...](#)

---

## Marketing Management & Entrepreneurship

[Tim Fandek](mailto:tim.fandek@wmea.org) (608) 267-9253



### WMEA New Website & Fall Conference Update

The Wisconsin Marketing Education Association is proud to announce their new [website](#). In addition, the "Invest in ME" Fall Conference will be held on October 19-21 in Wausau at Jefferson Street Inn. Please reference the website for additional information!

## DECA International Career Development Conference Results

On April 23-26, over 500 Wisconsin DECA members and advisors attended the International Career Development Conference in Nashville, Tennessee. For a complete list of Wisconsin champions, please click [here](#). Wisconsin DECA had almost 70 medal winners! Here is an additional resource that showcases our [EPIC Top 10 winners!](#)

## DECA Summer SBE Academy

Attention DECA advisors, do you have school-based enterprise (school store) that you would like to elevate to the next level? How about learning from advisors and SBE student leaders from around the state? The DECA SBE Summer Academy is [read more...](#)

---

## Technology & Engineering [Brent Kindred](#) (608) 266-2683



## WTEA 2017 Spring Conference

Mark your calendars for the Wisconsin Technology Education Association Spring Conference. The Spring Conference will take place on March 1-3, 2017 at the Chula Vista Resort in Wisconsin Dells, WI.

More information available at: [http://www.wtea-wis.org/public/?page\\_id=1441](http://www.wtea-wis.org/public/?page_id=1441)

## SkillsUSA News

The 2016-2017 [SkillsUSA Wisconsin calendar](#) is up-to-date with all of our events for the upcoming school year. Please take a look when you get a moment.

---

## Agriculture & Natural Resources [Jeff Hicken](#) (608) 267-9255



## WAAE News

The 2016 Wisconsin Association of Agriculture Educators (WAAE) Professional

Development Conference will be June 27-30th at the Paper Valley Hotel in Appleton. For more information go to <http://waae.com/>

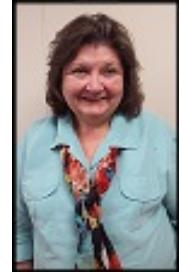
DPI/WAAE Fall Inservices are in the process of setting dates and locations look for the updated list by, August 1st at <http://www.dpi.wi.gov/ag>

## 2016 Wisconsin Association of FFA State Convention

The 2016 Wisconsin Association of FFA State Convention, June 13-16 in Madison at the Alliant Energy Center. For more information go to <http://www.wisconsinffa.org/>

## Health Science

[Janice Atkinson](#) (608) 266-2347



## Health Science Institute Focus: Classroom Activities

This will be a professional development opportunity that health science teachers will not want to miss! On July 27-28, 2016 at Comfort Inn in Madison, there will be two days packed with interactive learning with over 100 activities for use in [read more...](#)

## Wisconsin Delegation Attending the HOSA International Leadership Conference

Wisconsin HOSA-Future Health Professionals will send 179 delegates to the International Leadership Conference in Nashville, TN from June 22-25, 2016. It will be the largest group in state history to [read more...](#)

## Family & Consumer Science

[Diane Ryberg](#) (608) 267-9088



## Professional Development Opportunities

[WFCE \(Wisconsin Family and Consumer Educators\) Annual Conference](#) will be held August 8-10, 2016 at [Lake Lawn Resort](#), Delavan, Wisconsin. A DPI Pre-Session on August 8 will include [read more...](#)

## FCCLA

The State FCCLA Conference was held April 18-20, 2016 at the Kalahari Resort and Conference Center. The theme Empower/ Mepower allowed the 1,100 conference delegates/advisers to select the 2016-2017 State Officers, compete in STAR events,

and [read more...](#)

## Science Equivalency

The Department of Public Instruction is committed to expanding opportunities for students to meet graduation requirements. In the Fall of 2010, Wisconsin released information about establishing local science equivalency credit to food science courses in Family and Consumer Sciences classrooms.

More information available: <http://dpi.wi.gov/fcs/equivalency>

## Career & Technical Student Organizations (CTSO)

### CTSO Collaborative Teen Driving Safety Project

The Collaborative TEEN DRIVING SAFETY Grants will become available August, 2016 and will be posted on the website and available to all affiliated CTSO chapters. These \$1,000 grants are funded and sponsored by Children's Hospital, State Farm, and the Department of Transportation of Wisconsin.



### Why CTSO?

CTSOs are a vital part of a quality CTE program. Check out the CTSOs in Wisconsin and various media as contributed by officers and members as they highlight their knowledge, skills, and dispositions gained with their involvement in their school and district. <http://dpi.wi.gov/cte/ctso>

## College & Career Readiness

### Dual Enrollment

[Kevin Miller](#) (608) 267-3161

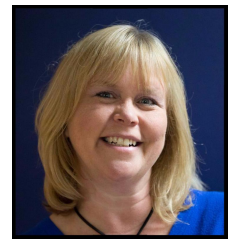


### Dual Enrollment

The CTE Spring Update included extensive information related to Dual Enrollment, and I encourage you to review that information if you work with these programs and/or work with students who use these programs. There have not been any changes since that update nor are there any pending changes to any of the dual enrollment programs [read more...](#)

# Career Pathways

[Robin Kroyer-Kubicek](mailto:Robin.Kroyer-Kubicek@dpi.wi.gov) (608) 266-2022



## Academic and Career Planning (ACP)

### Training:

Career Cruising has announced the training dates for this summer and fall! There will be one opportunity in summer with a repeat session in fall for school building trainers only. This training is intended to [read more...](#)

### Conference

We are excited to announce our Keynote Speaker for the [ACP Leadership Conference](#) will be [Richard Gerver](#). A dynamic and internationally known educational speaker, recommended by Sir Ken Robinson, he will set the tone for an exciting conference that will focus on leading, networking, and sharing sample practice presentations in the breakout sessions.

### Call for Proposals

The 2016 ACP Leadership Conference will be held December 6-7, 2016 at Monona Terrace in Madison. The theme this year is "ACP: Equipping Today's Students for Tomorrow's Opportunities." Please consider presenting at [read more...](#)

## CTE Incentive Grant Funding

### 2015 Funding

CTE Technical Incentive Grant funding for the Class of 2015 graduates will be released to individual school districts electronically during the week on June 7, 2016. DPI received a total of [read more...](#)

### 2016 Applications

Furthermore, the Class of 2016 graduate claim applications are also out. Please refer to the 2016 Approved Certification List to ensure which certifications are eligible for funding and what types of documentation is required to [read more...](#)

### Approved List

Please see the DWD webpage or contact DWD, Jamie Bernthal, at [JamieT.bernthal@dwd.wi.gov](mailto:JamieT.bernthal@dwd.wi.gov) or (608) 267-7210 with any questions regarding the current Approved Certifications List or adding new certifications to the approved list.

---

## WISELearn

Have you heard about WISELearn? Visit <http://dpi.wi.gov/wiselearn> and share information with your instructional leaders about the wide array of resources the Department of Public Instruction is building to support your local school district. Get updates about the critical **What, Why, and How** in order to take advantage of these new

statewide tools. [Read more...](#)

## Google+ Communities

WISELearn, our state's educator portal, has created discipline-specific communities designed to support Wisconsin's educators. These social networks consist of professional learning communities where educators can connect, communicate, and collaborate.

Please encourage your CTE teachers to join this new platform for professional development.

*Join our WISELearn CTE Communities at:*

- [WI DPI Agriculture Education / FFA / WAAE](#)
- [WI DPI Business & IT Education / FBLA / WEBIT](#)
- [WI DPI Family & Consumer Science Ed / FCCLA / WFCE](#)
- [WI DPI Health Science Education / HOSA / HOPE](#)
- [WI DPI Marketing Education / DECA / WMEA](#)
- [WI DPI Technology & Engineering / SkillsUSA / WTEA](#)

Once your request is confirmed, you can access and enjoy your educator community. Within the community you can share your questions and answers with peers while connecting over the triumphs and challenges of teaching. We hope to see you there!

VISIT OUR WEBSITE



SUBSCRIBE TO LIST

FORWARD EMAIL

Copyright © 2015. All Rights Reserved.