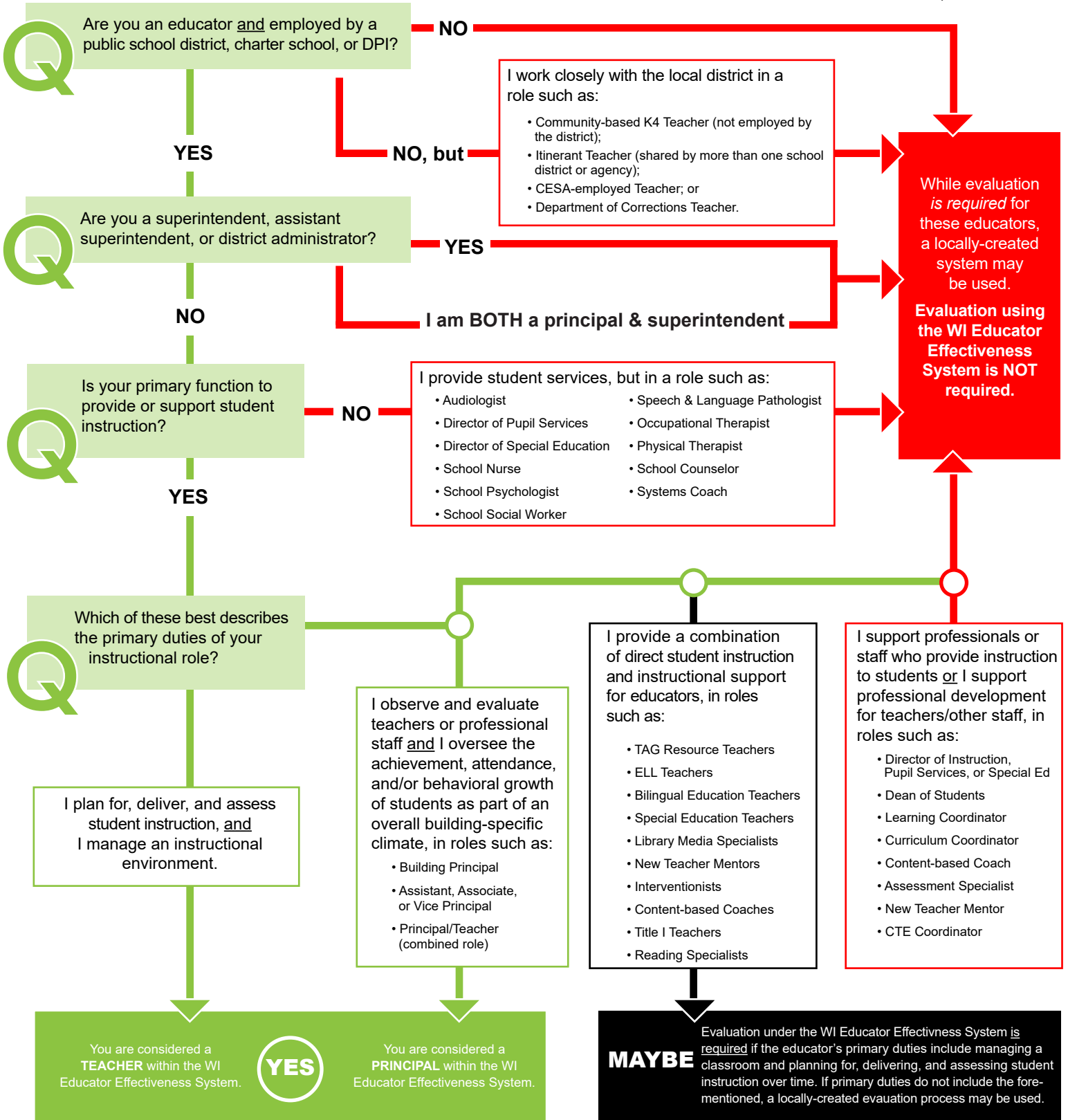


Which Educators Must Be Evaluated Using the WI Educator Effectiveness System?

Updated JULY 2020



DPI recognizes that professional titles and work roles vary across the state, and that in some cases educators serve in more than one role. Decisions related to evaluation should always be based on the role served by a district professional. Decisions should not be based solely on a specific title or license. Dependent upon the educator's primary duties within the district, district-level decisions may be necessary.