

**Instructional Practice Guide for
Equitable Teaching and Learning in
English Language Arts
Grades 6 through 8**



Wisconsin Department of Public Instruction
Carolyn Stanford Taylor, State Superintendent
Madison, Wisconsin
January 2020



**Instructional Practice Guide for Equitable Teaching and Learning in English Language Arts
Grades 6 through 8**

Table of Contents

Introduction	Page 2
How to Read this Document	Page 8
Practice Guide	Page 9
Glossary	Page 33
Contributing Educators	Page 35
Sources Reviewed by Educator Teams	Page 37
End Notes	Page 40

This is a publication of the:
Wisconsin Department of Public Instruction
125 South Webster Street
Madison, WI 53703
608-266-3390
www.dpi.wi.gov/ELA

© September 2019 Wisconsin Department of Public Instruction

The Department of Public Instruction does not discriminate on the basis of sex, race, color, religion, creed, age, national origin, ancestry, pregnancy, marital status or parental status, sexual orientation, or disabilities.

Introduction:

Instructional Practice Guide for Equitable Teaching and Learning in English Language Arts

Educational equity means that every student has access to the resources and educational rigor they need at the right moment in their education, across race, gender, ethnicity, language, disability, sexual orientation, family background, and/or family income¹.

To support educators and systems in ensuring educational equity in English language arts, the Wisconsin Department of Public Instruction's Literacy and Mathematics Team - in collaboration with Wisconsin English language arts educators - offers this collection of instructional practices.

In Wisconsin, the English language arts strive to ensure that every student²:

- Can use reading, writing, speaking, listening, and language fluidly and purposefully
- Builds an understanding of the human experience
- Understands that becoming literate is a life-long learning process
- Is able to creatively think critically, problem-solve, communicate, and collaborate
- Appreciates multiple perspectives

For more information, see [Wisconsin's Vision for English Language Arts](#).

Historically, this is not a reality that Wisconsin's educational system has made available to every student. In nearly every measurable area, (i.e. academic achievement, discipline practices, gifted and talented placement, and graduation rates) across all ages and grades, Wisconsin's education system has yielded persistent inequitable outcomes for learners along demographic lines. In particular, learners of color and students identified as English learners have experienced significantly lower rates of success than their peers. In addition, students with Individualized Education Programs (IEPs), particularly students of color with IEPs, and learners eligible for free and reduced lunch also experience significantly lower rates of success than their peers.

We believe this collection of instructional practices - when implemented along with curriculum (or scope and sequence) and with factors beyond instruction including motivational, managerial, and environmental factors - will increase every Wisconsin child's opportunity to develop as a literate individual.

How the Guide Supports Educators

The instructional practices described focus on what the teacher is doing in the classroom at the universal level of instruction to engage every student in accessing and moving beyond grade-level academic standards. The practices are not a curriculum or program; rather, they are practices that can be used alongside an array of approaches to teaching English language arts, school schedules, or frameworks (including [Universal Design for Learning \(UDL\)](#)). While it is possible that many of the same practices apply in [intervention](#) or [enrichment](#) settings, [universal instruction](#) in English language arts is the primary focus of the guide. While reviewing the practices in this guide, schools and districts could also review their curricular resources to determine if their current resources are sufficient to support these recommended research-aligned practices.

The guide emphasizes the integrated nature of the English language arts, representing the many ways reading, writing, speaking and listening, and the use of language intersect. Because of these complex intersections, no practice can stand on its own. The practices intersect with each other throughout a lesson or unit that comprise a course or curriculum; each practice depends upon others to be effective.

The guide aims to support educator expertise and encourage collaborative professionalism³. For this reason, the guide will - at times - lead educators to seek outside sources for specific information about and examples of practices. For example, the guide references using [contrastive analysis](#) to examine how language is used and valued in various settings. Educators who see this is a strategy that will benefit their students can engage in further investigation about the practice.

Development of the Guide

This document was developed by [Wisconsin English language arts educators](#) and the Wisconsin Department of Public Instruction Literacy and Mathematics team. Educators who contributed to this work come from all across Wisconsin and currently work with students, pre-service teachers, or teachers in schools spanning from kindergarten through higher education. This includes educators who specialize in working with students with IEPs, English learners, and students with gifts and talents.

Participants reviewed research and materials from other states that highlighted impactful practices. In addition, participants read and reflected on scholarly work related to equity in English language arts. All [sources reviewed during development](#) - along with additional citations - are found at the conclusion of this document.

The practices in the guide are research-aligned; peer-reviewed and published research exists to support the practices. The methodology and qualities of the research varies by practice.

Organization of the Guide

The instructional practice guides are organized by K - 2, 3 - 5, 6 - 8, and 9 - 12 grade bands and are based on individual sections of [Wisconsin's Vision for English Language Arts](#)⁴, with an introductory section focusing on [responsive teaching](#).

The sections include:

- Effective English language arts educators engage in responsive [teaching](#) grounded in research-aligned practices;
- English language arts is an integrated discipline;
- English language arts instruction builds an understanding of the human experience;
- Literacy is an evolving concept, and becoming literate is a lifelong learning process;
- Critical thinking and problem solving, communication, collaboration, and creativity are aspects of effective English language arts instruction and attributes of Wisconsin graduates;
- and literacy, language, and meaning are socially constructed and are enhanced by [multiple perspectives](#).

Components of an Equitable ELA Classroom - Beyond Instruction

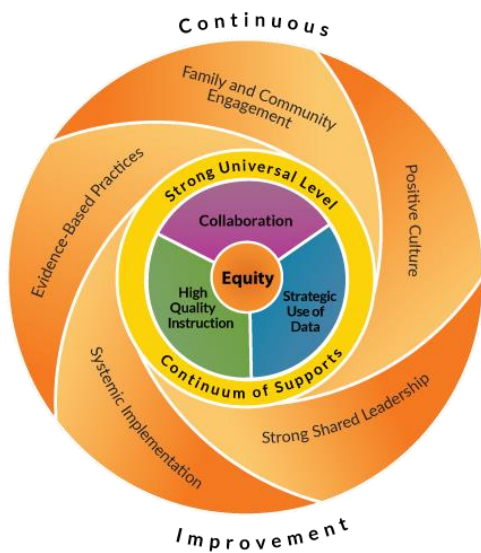
While this guide is solely focused on the ELA-specific instructional practices teachers employ with students, equity-minded educators understand that instruction is only one component of an effective classroom or instructional setting. Instruction works together with the following to create equitable teaching and learning⁵:

- teacher knowledge,
- motivational,
- managerial,
- curricular,
- and environmental factors.

These factors - along with [Wisconsin's Guiding Principles for Teaching and Learning](#)⁶ - are interdependent and must be addressed simultaneously to ensure that all learners benefit equitably from the research-aligned instructional practices.

While these additional factors are critical to successful implementation of the research-aligned instructional practices, they are outside of the scope of this document and, therefore, not addressed here.

The Guide and Wisconsin’s Framework for an Equitable Multi-Level System of Support⁷



It must also be noted that an effective classroom or instructional setting is situated within a larger [equitable multi-level system of support](#).

For Wisconsin schools and districts, implementing an equitable multi-level system of support means providing equitable services, practices, and resources to every learner based upon responsiveness to effective instruction and [intervention](#). In this system, high quality instruction, strategic use of data, and collaboration interact within a continuum of supports to facilitate learner success. Schools provide varying types of supports at differing levels of intensity to proactively and responsively adjust to the needs of the whole child. These supports include the knowledge, skills, and habits

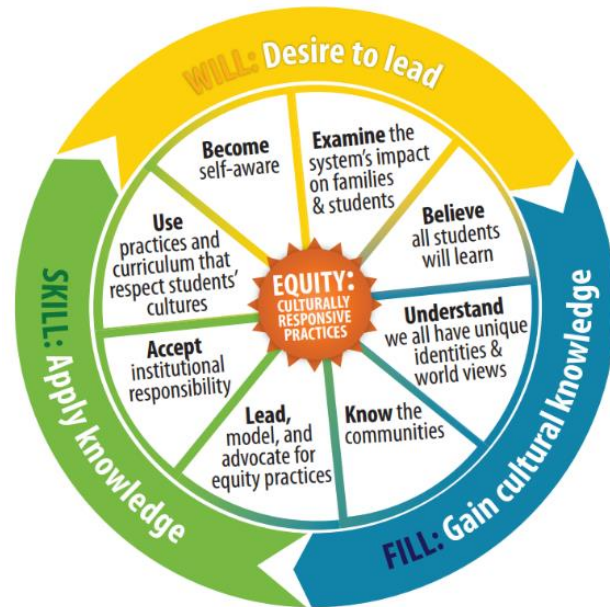
learners need for success beyond high school, including developmental, academic, behavioral, social, and emotional skills.

An equitable multi-level system of support exists to meet the needs of all learners. This includes learners with IEPs, learners who are advanced, and learners who are bilingual or learning English as a second or other language. This guide has been created and reviewed with all of these populations in mind. While individual learners may need additional supports, challenges, or services beyond what is included in this guide (especially services that are included in a student’s IEP), the practices outlined in the guide were carefully considered as ways to move all learners toward and beyond grade-level academic standards.

The Guide and Wisconsin’s Model to Inform Culturally Responsive Practice

Wisconsin’s framework for an equitable multi-level system of support has - at its core - educational equity. [Wisconsin’s Model to Inform Culturally Responsive Practices](#) “describes the beliefs, knowledge, and practices Wisconsin educators, schools, and districts need to reach and teach diverse students within their culturally responsive multi-level systems of support” (p. 2)⁸.

The ongoing process of becoming culturally responsive is represented in the outer circle as will, fill, and skill. The inner circle describes eight actions associated with will, fill, and skill. The actions are not discrete or sequential; instead, the actions are recursive throughout one’s journey toward [culturally responsive practice](#).



The instructional practices described in this guide are tangible actions toward educational equity. Wisconsin’s Model to Inform Culturally Responsive Practice provides a critical reminder that actions toward equity alone will not result in education equity. Instructional practices must be supported by a continual exploration of beliefs (of individuals and systems), recognition and elimination of barriers, and ongoing learning about our communities.

The practices within this guide can be supported by seeking opportunities within our classrooms and systems to validate, affirm, build, and bridge (VABB) our students, families, colleagues, and communities.

Validate	To make legitimate that which the institution (academia) and mainstream has made illegitimate
Affirm	To make positive that which the institution (academia) and mainstream media has made negative
Build	To make the connections between home culture and language and the school culture and language through instructional strategy and activity
Bridge	To give opportunities for situational appropriateness or the utilization of the appropriate cultural or linguistic behavior

(adapted by the Wisconsin RtI Center from the work of Dr. Sharroky Hollie)

Suggestions for Using this Guide

We recommend collaborating with colleagues around the guide. First, develop an overall understanding of the guide and then select areas of focus to apply to your practice.

Many caring adults support our students. Ensure that your study and implementation of these practices is as inclusive as possible. Collaborate across and within general education, special education, specialists (such as educators focused on English language learning, gifts and talents, technology, library media, and reading), and support staff (such as educational assistants).

Continually engage with students and families about the selection and implementation of practices, including ongoing feedback from these critical partners.

Ideas for Developing an Overall Understanding of the Guide

- Examine the document at each grade band (such as K - 2). Begin with the elements of the vision and their explanations. Move onto the statements below each element of the vision. Finally, move onto the practices beneath each statement.
- As you read this guide:
 - Indicate practices that are already part of your teaching;
 - Indicate practices that you would like to know more about; and
 - Indicate practices where you see clear connections to particular standards.

Ideas for Selecting an Area of Focus

- Review varied data sources about student performance, including the performance of subgroups. Select several practices related to an area of need as indicated by varied data.
- Engage in collegial observations to better understand which practices are being used or how a particular practice is already being used.
- Engage in a study of the practices that interest you in order to better understand what implementing particular practices might look like.
- Seek input from students and families about the use of particular practices and refine those practices as suggested.

Ideas for Implementation and Refinement

- Specifically define what a practice looks like when in use. Collect videos and examples of the practice.
- Record yourself implementing the selected practices. Share the recordings with colleagues for feedback.
- Seek feedback from students and families about the impact of practices.
- Work with a coach around your implementation of the selected practices.
- Collect data about how a practice is being used to determine professional learning priorities.

How to Read the Instructional Practice Guide

Begin with the introduction. The introduction situates the Guide within other work, including multi-level system of support. The introduction provides suggestions for how to use the Guide.

The Guide is organized around Wisconsin’s Vision for English Language Arts. Each section of the Guide begins with a statement from this vision. We refer to these as **vision statements**. These are highlighted in blue. There are six vision statements.

- Each vision statement is supported by **anchor statements** (each vision statements is supported by at least one anchor statement). Anchor statements appear in bold. Each anchor statement is followed by an explanatory paragraph.
 - Anchor statements are supported by specific **instructional practices**. The instructional practices operationalize the anchor statements.

The Guide includes a glossary. Throughout the document, words are hyperlinked to glossary definitions.

Note. The Guide is available for K – 2, 3 – 5, 6 – 8, and 9 – 12. Visit www.dpi.wi.gov/ela to find other grade-bands as well as a document that shows differences between grade-bands.

Figure 1.

Vision Statement 1. Responsive Teaching

Responsive Teaching: Effective ELA educators engage in **responsive teaching** grounded in research-aligned practices.

A major part of the daily work that takes place in English language arts classrooms cannot be singled out as one or more isolated strategies. Much of this work is directly related to educators’ understanding of their students and responsiveness while teaching. Many of the practices described require deeper work related to understanding communities within and outside of the classroom. This first section represents some of the work that can be done to help create those connections and communities in order to build on the strengths students bring to the classroom and expand students’ language and literacy repertoires.

- Anchor Statement 1: Responsive Teaching**
Building an enriching classroom community is an integral part of teaching and learning in an English language arts classroom.
- Anchor Statement 2: Responsive Teaching**
Formative practices drive instruction.

Figure 1 is a sample page that shows a vision statement. Each vision statement is a sentence followed by explanatory paragraphs. The anchor statements that relate to the vision statement are listed below the vision statement.

Figure 2.

Anchor Statement 1: Responsive Teaching

Building an enriching classroom community is an integral part of teaching and learning in an English language arts classroom.

Being cognizant of students’ strengths, including language/s, interests, and experiences, is part of responsive teaching, and explicitly addressing cultures - both the cultures of students and other cultures - is part of the community building process¹⁰. Educators can build on students’ existing literacy practices, being mindful of their heritage and language/s as students expand their repertoire of literacy practices¹¹. Respecting students’ differences and recognizing differences as strengths rather than deficits form a basis for responsive teaching and building classroom community¹². Educators employ multiple strategies to understand students as individuals, as well as developing an understanding of historical and contemporary cultural identities. All of this helps to create a culture of literacy in the classroom and broader learning community.

Sample Instructional Practices

- Investigate students’ identities and multiple literacy practices (personal, community, cultural, and school-based) at the beginning of each year, semester, or quarter as a way to leverage instructional practices that build on funds of knowledge¹³. This can include seeking information from families through practices such as surveys, conversations, prompts, formal or informal conversations with families, home visits, and/or school-based events.
- Keep ongoing notes about students’ multiple literacy practices (including using and creating texts in varied contexts such as home, community, and school). Use this data to inform daily classroom instruction.

Figure 2 shows an anchor statement. Each anchor statement is supported by explanatory paragraphs and followed by sample instructional practices.

Vision Statement 1. Responsive Teaching

Responsive Teaching: Effective ELA educators engage in responsive teaching grounded in research-aligned practices.

A major part of the daily work that takes place in English language arts classrooms cannot be singled out as one or more isolated strategies. Much of this work is directly related to educators' understanding of their students and responsiveness while teaching. Many of the practices described require deeper work related to understanding communities within and outside of the classroom. This first section represents some of the work that can be done to help create connections and communities in order to build on the strengths students bring to the classroom and expand students' language and literacy repertoires.

Anchor Statement 1: Responsive Teaching

Building an enriching classroom community is an integral part of teaching and learning in an English language arts classroom.

Anchor Statement 2: Responsive Teaching

Formative practices drive instruction.

Anchor Statement 3: Responsive Teaching

Instruction and practice includes intentional and varied instructional groupings⁹.

Anchor Statement 4: Responsive Teaching

Educators collaborate with families and the community to develop, celebrate, and promote varied literacies.

Anchor Statement 1: Responsive Teaching

Building an enriching classroom community is an integral part of teaching and learning in an English language arts classroom.

Being cognizant of students' strengths, including language/s, interests, and experiences, is part of [responsive teaching](#), and explicitly addressing cultures - both the cultures of students and other cultures - is part of the community building process¹⁰. Educators can build on students' existing literacy practices, being mindful of their heritage and language/s as students expand their repertoire of literacy practices¹¹. Respecting students' differences and recognizing differences as strengths rather than deficits form a basis for [responsive teaching](#) and building classroom community¹². Educators employ multiple strategies to understand students as individuals, as well as developing an understanding of historical and contemporary cultural identities. All of this helps to create a culture of literacy in the classroom and broader learning community.

Sample Instructional Practices

- Investigate students' identities and multiple literacy practices (personal, community, cultural, and school-based) at the beginning of each year, semester, or quarter as a way to leverage instructional practices that build on funds of knowledge¹³. This can include seeking information from families through practices such as surveys, conversations, prompts, formal or informal conversations with families, home visits, and/or school-based events.
- Keep ongoing notes about students' multiple literacy practices (including using and creating texts in varied contexts such as home, community, and school). Use this data to inform daily classroom instruction.
- Provide opportunities for students to use reading, writing, talk, and listening to interact, and to learn about themselves and others (including the teacher) in a safe and welcoming environment.
- Embrace, model, and encourage productive and authentic vulnerability. Share who you, the teacher, are as a person and learner with students through read-alouds and modeling writing without privileging the teacher's [literacies](#), interests, or views as more important than the students'.
- Provide tools and opportunities to authentically bring instruction beyond the walls of the school (such as inviting community members to share real-life writing tasks in the classroom or developing opportunities to share student-created text in the community).
- Provide access to print and digital texts (communication - spoken, written, or visual - involving language) in classrooms and libraries that students can take home.
- Visibly and frequently celebrate [diversity](#) that exists in the classroom, community, and world.

Anchor Statement 2: Responsive Teaching

Formative practices drive instruction.

Formative practices- part of a larger strategic assessment system¹⁴- are based on classroom goals, identify students' current thinking, and encourage students to take responsibility for their own learning¹⁵. Educators use formative practices and provide feedback on a daily basis - while students are engaged in meaningful reading, writing, and talking. This allows the educator to be more responsive during [universal instruction](#) and [intervention](#) or [enrichment](#)¹⁶. There are multiple forms of formative practices that can be used at different points of a lesson, based on appropriateness and need.

(See <https://dpi.wi.gov/strategic-assessment/cycles-assessment/formative> for more information)

Sample Instructional Practices

- Maintain a flexible system for documenting information learned from formative assessments (e.g., checklists, anecdotal notes, photographs, audio recordings, or student drafts).
- Make timely instructional decisions based on the analysis of varied sources of data, including but not limited to: journal writing, discussion, observation, drafting, exit slips, surveys of prior knowledge, conversations, expository writing, informal writing events, and other local assessments.
- Provide varied opportunities for students to demonstrate their understanding, including genres and formats that reflect students' individuality, cultures, and languages.

Anchor Statement 3: Responsive Teaching

Instruction and practice includes intentional and varied instructional groupings¹⁷.

Small group and individual instruction are used to support students in experiencing grade-level content *and* content matched to individual strengths and needs. For small group instruction, groupings are flexible and based on a variety of data sources (including formative practices, such as observation). The educator prompts students to use collaborative conversation to make meaning of a variety of texts and to collaborate on the creation of texts. When appropriate in small groups, students—rather than the teacher—share responsibility for leading the group. These groupings function within a classroom community in which all students are valued.

Sample Instructional Practices

- Flexible groupings, including peer-assisted learning, are used to reteach and support students of all abilities and backgrounds (e.g., groupings may be based on student needs, strengths, interests, or languages).
- Implement variable and various grouping for authentic text-based discussion and inquiry-based writing tasks to meet instructional goals. This includes opportunities for substantive conversation (e.g., peer to peer, whole class, small group, fish bowls, literature circles, turn and talk, reciprocal teaching).

Anchor Statement 4: Responsive Teaching

Educators collaborate with families and the community to develop, celebrate, and promote varied [literacies](#).

Educators develop relationships with families and community members to understand, validate, and affirm literacy and language practices valued and used within families and communities. In addition, educators and families collaborate to support students in building their [literacies](#) and bridging between home, community, and school [literacies](#). Schools, families, and communities collaborate to promote all forms of literacy.

Sample Instructional Practices

- Engage families and communities in multiple and innovative ways (including communications and events that highlight family and community literacy practices and values).
- Invite families and community members to participate in shared literacy practices in and outside of the classroom (e.g., publishing parties, book talks, poetry slams, readers theater, guest speakers). When co-creating events, be mindful of removing barriers to participation and creating an inclusive environment.
- Communicate student progress in relation to academic standards and goals and celebrate student work formally and informally.

Vision Statement 2. Integrated Discipline

Integrated Discipline: English language arts is an integrated discipline.

Though the standards are separated into sections, the processes of reading, writing, speaking, listening, viewing, and representing happen in a connected way, and are intended to be taught as such, in rich and authentic learning contexts.

Anchor Statement 5: Integrated Discipline

Writing is a tool for reading, and reading is a tool for writing. In order to engage reading and writing as tools, educators must provide many integrated opportunities for students to read, write, talk, and listen for a variety of audiences and purposes.

Anchor Statement 6: Integrated Discipline

Exposure to, analysis of, and practice with various purposes, audiences, and contexts for writing is necessary for composing a variety of texts¹⁸.

Anchor Statement 7: Integrated Discipline

Provide explicit language and vocabulary instruction through varied approaches in multiple contexts¹⁹.

Anchor Statement 8: Integrated Discipline

Collaborate on standards-based interdisciplinary learning opportunities.

Anchor Statement 5: Integrated Discipline

Writing is a tool for reading, and reading is a tool for writing. In order to engage reading and writing as tools, educators must provide many integrated opportunities for students to read, write, talk, and listen for a variety of audiences and purposes.

The connections between reading and writing support multiple opportunities for students to think, practice, and apply what is taught. Using various tools for writing promotes thinking, generates ideas, and can also be used as platforms to cultivate and honor students' authentic voices²⁰. Within a cohesive curriculum, students can apply what has been taught to actual reading and writing of connected texts.

Sample Instructional Practices

- Use read-alouds and/or [mentor texts](#) (texts as models) to advance historically underrepresented cultural perspectives and build background knowledge from which to draw for later content.
- Facilitate students' reflections on texts through the use of reader-writers notebooks.
- Support students' application of one component of literacy through another component of literacy (e.g., provide opportunities for students to orally share thoughts and ideas before and during writing and reading, including in the language that students are most comfortable using).
- Use writing, reading, speaking, and listening to support students in examining and discussing problems, challenging assumptions, evaluating credibility, conducting research, and exploring various ways of understanding, particularly when they write about texts for multiple purposes²¹.

Anchor Statement 6: Integrated Discipline

Exposure to, analysis of, and practice with various purposes, audiences, and contexts for writing is necessary for composing a variety of texts²².

Across the school year, educators must ensure students write among a wide range of genres for different purposes and audiences, including, but not limited to: argument, informative/explanatory, narrative, and reflection, privileging writing for authentic audiences and purposes²³. There should be opportunities for students to write every day with support to develop the strategies, skills, knowledge, and motivation for writing in a positive classroom environment²⁴. Educators can ensure that students examine different kinds of texts and how they differ in style and form²⁵. Grammar, usage, and syntax are examined in authentic and culturally-relevant contexts, focusing on how they differ based on purpose and audience.

Sample Instructional Practices

- Include abundant opportunities for students to have voice and choice in what they write about, including creating texts in the language(s) they are most comfortable using.
- Provide explicit instruction and modeling in the writing process for authentic purposes and audiences in a variety of culturally inclusive and multimedia formats and platforms (such as play, speech, and digital platforms), representing a broad definition of text.
- Design opportunities for students to analyze both contemporary and current cultural products (e.g. digital media, books, podcasts, etc.) as models of and ideas for writing.
- Model writing using techniques such as demonstration or collaborative writing, providing a variety of writing tools (e.g., voice to text, pen and paper, or computer).
- Use texts as models (print and digital) to support the teaching of writing among genres and modes, focusing on language, use of conventions, and tone appropriate for different writing contexts²⁶. Ensure the texts used as models represent a global perspective.

Anchor Statement 7: Integrated Discipline

Provide explicit language and vocabulary instruction through varied approaches in multiple contexts²⁷.

Language and vocabulary instruction go beyond explicit work with academic vocabulary to build knowledge to include language analysis and use across a variety of contexts (including varied uses of English). This instruction is integrated into regular lessons and fosters students who are flexible, intentional users of language.

Sample Instructional Practices

- Build vocabulary through explicit instruction during frequent, wide interaction with text, including a wide variety of informational and literary text.
- Provide and model strategies in oral and written contexts to practice vocabulary, including repeated exposure to new words.
- Develop a deep understanding of words through student-friendly and student-created explanations of words.
- Apply a curious and joyful approach to word learning. Build opportunities for students to be curious about new and interesting words and engage in wordplay.
- Build opportunities to notice, ask about, and investigate new and interesting words.
- Provide explicit instruction in strategies for determining the meaning of unknown words.
- Build connections to students' other languages (i.e., as cognates).
- Use word parts (i.e., Greek or Latin affixes and roots) to increase comprehension of word meanings.
- Use [contrastive analysis](#) to examine how language is used and valued in various settings (including in school and in various community spaces) to understand how language can empower some while disempowering others²⁸.
- Systematically teach and practice spelling skills in relation to students' needs and aligned with the expectations of the *Wisconsin Standards for ELA* and district expectations.

Anchor Statement 8: Integrated Discipline

Collaborate on standards-based interdisciplinary learning opportunities.

Educators can collaborate across disciplines on ideas for meaningful creation of texts through an array of writing and reading processes among different academic disciplines²⁹. In this collaboration, the role of the ELA teacher is to deliver instruction that furthers the study of English language arts as a discipline.

Sample Instructional Practices

- Use teacher read-alouds and classroom book collections to develop disciplinary knowledge.
- Provide opportunities for inquiry-based study of real-world issues (e.g., students can generate meaningful, relevant questions to research and present in various formats).
- Engage students in instruction in ELA-standards relevant during integrated units of study.
- Make explicit references to knowledge students are learning in other content areas to enrich instruction.

Vision Statement 3. Human Experience

Human Experience: ELA instruction builds an understanding of the human experience.

The discipline of English language arts celebrates the richness and complexity of literature, drama, speech and language, while providing a window to the human experience. Through rigorous textual analysis and text creation, students grapple with moral, philosophical and aesthetic facets of humanity, which inform, persuade and narrate our lives and help us understand the experiences of others. These understandings ensure students graduate not only ready for college and career, but also ready to be thinking and feeling citizens of the world.

Anchor Statement 9: Human Experience

Texts act as [windows and mirrors](#) for students, and both should be provided in abundance in any school context³⁰.

Anchor Statement 10: Human Experience

Students are supported in using reading, writing, and language - including collaborative conversations - to share knowledge, make arguments, and advocate for change in order to improve their worlds.

Anchor Statement 9: Human Experience

Texts act as [windows and mirrors](#) for students, and both should be provided in abundance in any school context³¹.

It is imperative that educators provide texts that act as both [windows and mirrors](#) for all students for required and independent reading. Texts that act as mirrors showcase everyday common experiences, as well as unique or rare experiences. Texts that act as windows support learning new and/or unfamiliar content through rigorous exploration to know and understand others³². Classroom libraries and school libraries should provide a wide range of print and digital texts, including student-created text, and students must have opportunities to read every day, including student-selected texts. When selecting texts, considering both quantitative and qualitative characteristics of texts, including representation and [diversity](#), is necessary³³.

Sample Instructional Practices

- Intentionally seek out and foster interest in [culturally authentic texts](#) written by and featuring diverse creators and voices for required and independent reading³⁴.
- Facilitate reflection on reading and writing to interact with text in ways that promote the development of empathetic, thinking, feeling citizens of the world.
- Select texts and materials that provide rich and multiple models of culture, including informational texts about heroes, inventors, or pioneers in a field.

Anchor Statement 10: Human Experience

Students are supported in using reading, writing, and language - including collaborative conversations - to share knowledge, make arguments, and advocate for change in order to improve their worlds.

Because language and literature production and use can be political, it is important to help students unpack meaning of print and digital texts in the pursuit of civic engagement³⁵.

Instruction (along with materials, assessments, and classroom routines) promote critical literacy³⁶ which empowers students to use literacy to develop a deep understanding of an issue, take a critical stance on that issue, and advocate for action in their communities or worlds.

Educators support students in questioning text, noticing perspective, and being conscious of inclusivity and representation in text. Discussion and writing are used to interrogate text.

Throughout learning, students participate in and contribute to discourse communities to improve their worlds.

Sample Instructional Practices

- Involve students in authentic inquiry that culminates in action (supported by talk or text) through which students use literacy to engage in their communities or worlds.
- Showcase texts that are examples of young people making a difference in their communities.
- Support students in recognizing how our use of language changes across contexts (from varied discourse communities), empowering some, while disempowering others³⁷.
- Provide access to texts representing multiple points of view/perspectives on the same topic.
- Use talk, reading, movement, and writing or drawing to explore and express perspectives.
- Model the use of various sources valued by diverse groups or people to gain information, construct knowledge, or better understand our own viewpoints.

Vision Statement 4. Lifelong Process

Lifelong Process: Literacy is an evolving concept, and becoming literate is a lifelong learning process.

As society and technology change, so does literacy. Literacy evolves as widening perspectives change the way we read, write, speak, listen, view, and represent. Students are versed in many [literacies](#) long before entering the classroom, and continue to build [literacies](#) in every classroom throughout their formal school, and long after formal schooling is completed. Literacy attainment, and especially early literacy attainment, is strengthened by responsive learning environments that include research-based core programs, strong [intervention](#) systems, and multiple ways of monitoring what students know and are able to do. Knowing this, all educators must see themselves as both literacy teachers and literacy learners.

Anchor Statement 11: Lifelong Process

Support students in choosing and reading independent reading materials.

Anchor Statement 12: Lifelong Process

Educators provide opportunities for students to engage with texts they can read independently while also providing supported opportunities to engage with more challenging text.

Anchor Statement 13: Lifelong Process

Value, model, and practice productive struggle.

Anchor Statement 11: Lifelong Process

Support students in choosing and reading independent reading materials.

Independent reading and processing is a daily staple of core classroom instruction. This includes supporting students reading for different purposes within different genres³⁸. They need access to a wide range of reading materials, in various formats, including digital, and guidance in choosing materials for independent reading purposes. Provide guidance in how to choose materials for independent reading purposes. If used, text levels (such as Lexiles) may provide a support rather than requirements for text selection.

Sample Instructional Practices

- Promote the enjoyment and love of reading through teacher and student-generated book talks³⁹.
- Use conversation and conferencing to encourage students to pursue a wide variety of genres and levels of complexity when selecting texts for independent reading⁴⁰.
- Intentionally select relevant texts for read-alouds and whole class work to give students experience with a variety of formats and genres. For each, explicitly teach features and elements that can support students in reading that type of text independently.
- Support students in noticing patterns and preferences in their habits as readers and writers, such as preferred genres and formats, and setting goals around wide reading.
- Share your habits as a reader and model your independent reading practices (using think alouds, questioning, text selection).

Anchor Statement 12: Lifelong Process

Educators provide opportunities for students to engage with texts they can read independently while also providing supported opportunities to engage with more challenging text.

Educators provide many opportunities for every student to engage with connected, meaningful texts they can read independently. This supports readers' development of fluency and automaticity. In addition, educators provide many supported opportunities for young readers to engage with grade-level texts and topics. This promotes engagement, knowledge development, and vocabulary development.

Sample Instructional Practices

- Reading materials reflect an expanded definition of text as any communication - spoken, written, or visual - involving language.
- Provide instruction on how to choose materials for independent reading based on interest, genre, and ability (including peer recommendations)⁴¹. If used, text levels (such as Lexiles) may provide a support rather than a requirement for text selection.
- Emphasize the importance of selecting texts from which a reader can make meaning (combination of decoding and understanding).
- Read texts to/with students (such as a read-aloud) to allow students to access grade-level text and content, which they might not yet be able to access independently.
- Utilize technology to remove barriers to accessing text (such as screen readers, digital text, or audio text).
- Engage students in ongoing instruction to continue to learn to independently read and understand "traditional" grade-level text.

Anchor Statement 13: Lifelong Process

Value, model, and practice productive struggle.

Instruction demonstrates that the non-linear processes readers and writers engage in are as important as the outcomes. Educators can position themselves as learners to give students opportunities to feel confident in taking risks as users of language⁴².

Sample Instructional Practices

- Modeling of thinking processes and struggle can be done through many methods, including think-alouds, self-questioning, searching for clarification, sentence frames, and reflection⁴³.
- Apply an instructional framework that allows students to experiment with what was demonstrated through modeling.
- Provide opportunities for students to self-assess progress towards goals⁴⁴.
- Provide appropriate scaffolding (graphic organizers, sentence starters, discussion frames, prompts, anchor charts).
- Provide specific feedback, prompting, and cues to support students in noticing and continuing with productive struggle as users of language.
- Model how to incorporate feedback to improve thinking and writing.

Vision Statement 5. Critical Thinking

Critical Thinking: Critical thinking and problem solving, communication, collaboration, and creativity are aspects of effective ELA instruction and attributes of WI graduates.

Wisconsin's commitment to ensuring that career, college, and community skills are embedded aspects of English language arts is ongoing. This skill development strengthens English instruction. Student mastery of these skills is important to Wisconsin's conception of college and career readiness, and to ensure students access the discipline of English language arts in rich and meaningful ways.

Anchor Statement 14: Critical Thinking

Teach students to navigate among various [rhetorical contexts](#).

Anchor Statement 15: Critical Thinking

Educators use a variety of meaningful texts and contexts to engage students in explicit instruction focused on thinking critically while reading/talking about authentic text.

Anchor Statement 14: Critical Thinking

Teach students to navigate among various [rhetorical contexts](#).

Students need support in order to discuss, understand, and practice flexibilities necessary for using language/s in understanding and creating texts⁴⁵.

Sample Instructional Practices

- Explicitly teach interplay of writer, audience, purpose, and mode.
- Use [mentor texts](#) (texts as models: print and digital) to support the teaching of writing among genres, focusing on appropriate language, use of conventions, and tone for different writing contexts⁴⁶.
- Explicitly teach strategies for generating ideas, drafting, revising, and editing among different formats and genres⁴⁷. Explicitly teach appropriate strategies for reading within different formats and genres (e.g., novels, short stories, plays, poetry, blogs, articles, advertisements, infographics, photos) to prepare students to maneuver among various tasks, audiences, and purposes.
- Examine grammar, usage, style, and form focusing on how they differ based on intended purpose and audience.

Anchor Statement 15: Critical Thinking

Educators use a variety of meaningful texts and contexts to engage students in explicit instruction focused on thinking critically while reading/talking about authentic text.

Explicit instruction in reading moves beyond literal comprehension by emphasizing strategies for inferential comprehension, literary elements, and craft and structure. This instruction apprentices students to the complex and multi-layered thinking in which readers engage (rather than isolated instruction in single strategies).

Sample Instructional Practices

- Instruction is intentionally planned to emphasize specific aspects of comprehension or craft and structure while leaving room for students' curiosities.
- Texts are intentionally selected to encourage deep thinking.
- Vary delivery methods for comprehension instruction using large group instruction for techniques that all students need and small groups for techniques some students need.
- Create authentic discourse communities where students build on ideas of others and provide evidence to support thoughts (refer to Speaking and Listening Standard 1 in Wisconsin's Standards for English Language Arts).

Vision Statement 6. Social Construction

Social construction: Literacy, language, and meaning are socially constructed and are enhanced by [multiple perspectives](#).

A rich diversity of texts, language uses, viewpoints, and critical discussions are important for building knowledge in Wisconsin English language arts classrooms. Exposure to different genres and text types, and access to multiple and global perspectives provide a venue to explore and analyze the world.

Anchor Statement 16: Social Construction

The languages, knowledge, and experiences of all students serve as a foundation from which every student builds understanding.

Anchor Statement 17: Social Construction

Educators provide intentional opportunities for collaborative and text-based conversation in varied groupings.

Anchor Statement 16: Social Construction

The languages, knowledge, and experiences of all students serve as a foundation from which every student builds understanding.

All students deserve to have a culturally inclusive curriculum that positions students' lived realities as assets. English language arts practices capitalize on these realities as a way of building repertoires of practice⁴⁸ that expand everyone's social and linguistic resources⁴⁹.

Sample Instructional Practices

- Provide opportunities for every student to be seen by peers as knowledgeable experts (e.g., giving students opportunities to share their background knowledge on a relevant topic).
- Use instructional materials that include a broad definition of text, with a text as anything that conveys meaning.
- Expect students to share their thinking and reasoning for all students to see how others make sense of the world.

Anchor Statement 17: Social Construction

Educators provide intentional opportunities for collaborative and text-based conversation in varied groupings.

Collaborative, text-based conversations can be used to construct knowledge, seek perspective, and develop deep understanding in face-to-face or virtual contexts. Such conversations can build background knowledge before reading, deepen comprehension, or inform writing.

Sample Instructional Practices

- Provide opportunities for students to use and share in a language they are most comfortable.
- Emphasize authentic discussion and writing tasks based in inquiry.
- Explicitly teach and model behaviors expected for productive, collaborative conversation (including both listening and speaking).
- Provide appropriate scaffolds for productive collaborative conversation and work (such as sentence starters, discussion stems, or pre-teaching of vocabulary).

Glossary

contrastive analysis	The practice of comparing and contrasting the linguistic structure of two languages to facilitate the acquisition of Standard English. This practice bridges the connection between students' home language, and language required in school ⁵⁰ .
culturally authentic text	Text that reflects the culture of the students while also providing entry points for students to see connections between themselves, the characters, the settings, and the themes described in a text ⁵¹ .
culturally responsive practice	"An approach to teaching that recognizes the value of learners' cultural beliefs and practices and draws upon them to inform instruction, enhance learner self-advocacy, and bridge learners' home and school experiences" (p. 2) ⁵² .
discourse communities	A group of people with common goals, a common set of participatory mechanisms, common means of communication exchange, community specific genres, specialized terminology, and generalized expertise ⁵³ .
diversity	"Diversity is inclusive of individual differences (e.g., personality, interests, learning modalities, and life experiences), and group differences (e.g., race, ethnicity, ability, gender identity, gender expression, sexual orientation, nationality, language, religion, political affiliation, and socio-economic background)" (p.49). ⁵⁴
enrichment	Strategic practices that add complexity and depth. The deliberate practices that ensure the continued growth and development of students who have exceeded academic grade level standards ⁵⁵ .
intervention	"The systematic use of technique, practice, or program designed and shown to improve learning in specific areas of student need" (p.4) ⁵⁶ .
literacies	(or multiple literacies) The varied ways in which information is interpreted, created, communicated, and computed, using printed, written, and verbal, content. Multiple literacies exemplify different cultural contexts, social purposes, life experiences, personal interests, as well as knowledge base. Learning to communicate in not just one "right" way, but the ability to negotiate differences in multiple ways to convey meaning to an audience. ⁵⁷

mentor text	A piece of text that should be studied and imitated by student writers. A scaffolded strategy that exposes students to new writing styles, and encourages students to be adventurous in their own writing. Mentor text are not exclusive to books. They can be poems, newspaper articles, song lyrics, comic strips, manuals, essays, as well as student work ⁵⁸ .
multiple literacies	See literacies
multiple perspectives	The integration of all student perspectives into a classroom. The ability to engage students in respectful discourse that weigh different schools of thought, cultures, and/or individual viewpoints ⁵⁹ .
responsive teaching	“Responsive teaching is the process of stepping in and out of a learning activity to support the student’s individual needs and growing independence. This process has also been referred to as scaffolding. . . . Through responsive teaching, these [educators] experts provide assistance and share strategies that advance students’ abilities to the point where they can complete the task on their own”. ⁶⁰
rhetorical contexts	“Rhetorical context refers to the circumstances surrounding any writing situation and includes purpose, audience, and focus.” ⁶¹
universal instruction	“The academic and behavioral curriculum and instruction deemed critical, delivered to all students, and expected to meet the needs of most students in a school. Also referred to as Core instruction, Primary Level of Intervention, and Tier One Instruction” (p. 3) ⁶² .
windows and mirrors	<p>A text that inspires the readers to see outside of themselves, to interact with characters, experiences, and settings far removed from anything with which they are familiar. Texts that act as windows challenge students’ thinking and allow students to walk away from the texts having learned something new about the world beyond the one they know.</p> <p>A text that reflects familiar images, physical, cultural, or emotional, to that of the student is considered a mirror. When students see characters, experiences, and settings that are familiar to them, they can easily make connections between themselves and the text⁶³.</p>

Contributing Educators

The Department of Public Instruction thanks the following educators for contributing their time and expertise to the creation of this guide. In addition, the Department of Public Instruction thanks numerous educators for providing feedback on the document.

Michelle Belnavis
Culturally Responsive Practices
Technical Assistance Coordinator
Wisconsin Rtl Center

Dr. Laura Lang
Faculty Associate
University of Wisconsin - Madison

Katie Bleier
Academic Program Support Teacher -
Special Education
Green Bay Area Public Schools

Martha Lopez
Bilingual Teacher, Allen-Field School
Milwaukee Public Schools

Catherine Cedzo
5th grade teacher, Riverside Elementary School
Menomonee Falls School District

Jenny Mathison-Ohly
English Teacher, Middleton High School
Middleton Cross Plains Area School District

German A. Diaz
4th grade bilingual teacher
Milwaukee Public Schools

Dr. Teaira C. McMurtry
School Improvement Coordinator
Milwaukee Public Schools

Megan Dixon
2nd grade teacher
School District of Greenfield

Dr. Tynisha Meidl
Associate Professor
St. Norbert College

Rita Ehlert
ELA Teacher
Jack Young Middle School, Baraboo

Kathryn Moser
District Reading Specialist and K - 4
Interventionist
Clintonville Public Schools

Tanya Evans
District Literacy Leader
Milwaukee Public Schools

Beth Paap
ELA Teacher, grades 7 - 9
Bayfield School District

Jason Gums
English Department Chair, Antigo High School
Antigo Unified School District

Justina Plemon
English Teacher
School District of New Richmond

Jenny Magee
4th grade teacher, Northside Elementary
Middleton Cross Plains Area School District

Dr. Heather Pauly
Assistant Professor of Language and Literacy
Cardinal Stritch University

Dr. Colleen Pennell
Assistant Professor, Literacy Education
Carroll University

Matt Renwick
Principal
Mineral Point Elementary School

Amy McGovern
District Reading Specialist
Wausau School District

Amy Sauerma
6th grade ELA Teacher
Eau Claire Area Schools

Amy C. Sippert
1st grade teacher, Merrill Elementary
Oshkosh Area School District

Trisha Spende
Director of Online and Blended Learning, Options
Virtual Charter School
Elkhorn Area School District

Rob Tyvoll
Supervisor of Academic Programs and Staff
Development
School District of LaCrosse

Paul Walter
7th grade ELA Teacher
Slinger Middle School

Amanda Zieba
7th grade ELA Teacher
Onalaska School District

Contributing Department of Public Instruction Staff

In addition to the staff listed below, we thank the Department of Public Instruction staff who facilitated the process and/or provided written feedback

Laura Adams
Literacy Consultant

Dr. Marci Glaus
Strategic Communications Consultant

Dr. Melissa Hedges
Mathematics Consultant

Jake Hollnagel, Consultant for Educator
Development and Support

Dr. John Johnson
Director

David McHugh
Planning and Professional Learning Consultant

Barb Novak
Literacy Consultant

Bianca Williams-Griffin
English Language Arts Consultant

Contributing Educators: Promising Practices for Students with Disabilities

Beginning in 2015, the Wisconsin Department of Public Instruction (DPI) met with stakeholders to request input about what efforts they felt contribute to improving literacy outcomes for students with Individualized Education Plans (IEPs). Included in that feedback was a recommendation to investigate systemic and instructional practices that have improved results. As such, DPI conducted a rigorous review of data, based on numerous statistical, geographic, and demographic factors to identify schools throughout Wisconsin that have demonstrated greater than average growth in the area of literacy for students with IEPs.

Based on the findings, DPI invited school-based teams to discuss the systemic and instructional practices that may have influenced positive change in the area of literacy for students with IEPs. The group of approximately 30 educators met four times throughout early 2016. The workgroup was facilitated by DPI consultants from both the Literacy and Mathematics and Special Education Teams. Additionally, critical friends from Great Lakes Equity Center (Midwest and Plains Equity Assistance Center) provided ongoing insight and professional learning.

The ideas about instructional practices such as inclusion, accessibility, rigorous learning, and the intersection of race and ability discussed by the educators below influenced the content of *Wisconsin's Instructional Practice Guide for Equitable Teaching and Learning in English Language Arts*. We extend our appreciation to the following contributors:

Jessica Adamovich, Eagle River Elementary
Northland Pines School District

Becky Collins, Regional Service Network
Coordinator

Sara Adamovich, Eagle River Elementary
Northland Pines School District

Jenny Drana, Jones Elementary School
Cudahy School District

Gail Anderson, Regional Service Network
CESA 2

Laurie Every, State Road Elementary School
LaCrosse School District

Lisa Arneson, Director, School Improvement
CESA 3

Tina Feiten, Colby Elementary
Colby School District

Lena Becker, Lena Middle School
Lena School District

Juli Gauerke, Athens Middle School
Athens School District

Nicole Boico, Jones Elementary School
Cudahy School District

Lindsey Heinz, Woodland Intermediate School
Kimberly Area School District

Lisa Brill, Colby Elementary
Colby School District

Julie Herron, Athens Middle School
Athens School District

Morgan Burris, Mineral Point Elementary School
Mineral Point Unified School District

Sherri Hole, Rock Elementary School
Hudson School District

Kim Bychowski, Traver Elementary School
Linn J4 School District

Heidi Johnson, Paperjack Elementary School
New Richmond School District

Mary Kelly, Lombardi Middle School
Green Bay Area School District

Tammy Klimpke, Lena Middle School
Lena School District

Kerri Koschkee, Lombardi Middle School
Green Bay Area School District

Chrissy Krone, Hurley Elementary School
Hurley School District

Debbie Lisch, Lena Middle School
Lena School District

Nikki Nelson, Humke Elementary School
Nekoosa School District

Michelle Niemuth, Traver Elementary School
Linn J4 School District

Staci Perry, Lombardi Middle School
Green Bay Area School District

Jean Ruprecht, State Road Elementary School
LaCrosse School District

Michelle Santini, Hurley Elementary School
Hurley School District

Erin Schiltgen, Rock Elementary School
Hudson School District

Benita Schmitz, Mineral Point Elementary School
Mineral Point Unified School District

Wanda Stensberg, Humke Elementary School
Nekoosa School District

Nikole Sturgis, DeLong Middle School
Eau Claire School District

Stephanie Symes, Savanna Oaks Middle School
Verona Area School District

Stacy Tremaine, Savanna Oaks Middle School
Verona Area School District

Deb Wall, Regional Service Network
CESA 8

Brent Wathke, DeLong Middle School
Eau Claire School District

Michele Weiss, New Richmond Paperjack
Elementary School
New Richmond School District

Julie Williams, Woodland Intermediate School
Kimberly Area School District

Sue Wintheiser, Wilson Elementary School
Sheboygan Area School District

Diane Wolowicz, Wilson Elementary School
Sheboygan Area School District

Special Thanks to Great Lakes Equity Center

Kathleen King Thorius, Ph.D., Principal Investigator

Seena Skelton, Ph.D., Director

Sources Reviewed by Educator Teams

Achieve the Core (2017, July). Aligning content and practice: The design of the instructional practice guide.

Retrieved from <https://achievethecore.org/page/3119/aligning-content-and-practice-the-design-of-the-instructional-practice-guide>

Bomer, R. (2017). What would it mean for English language arts to become more culturally responsive and sustaining? *Voices from the middle*, 24(3), 11-15.

Common Core State Standards Initiative (n.d.). Key shifts in English language arts. Retrieved from <http://www.corestandards.org/other-resources/key-shifts-in-english-language-arts/>

Dawson, C. (2013). Writing in the English language arts. In A. N. Applebee, & J.A. Langer (Eds.) *Writing instruction that works: Proven methods for middle and high school classrooms*. (pp. 28-49). Berkeley, CA: Teachers College Press & National Writing Project

Duke, N., Cervetti, G., & Wise, C. (2017). Learning from exemplary teachers of literacy. *The Reading Teacher*, 71(4), 395-400.

Foorman, B., Coyne, M., Denton, C.A., Dimino, J., Hayes, L., Justice, L., Lewis, W.m & Wagner, R. (2016). *Foundational skills to support reading for understanding in kindergarten through 3rd grade: Practice guide summary*. (NCEE 2016-4008). Washington, DC: National Center for Educational Evaluation and Regional Assistance, Institute of Education Sciences, U.S. Department of Education. Retrieved from <https://ies.ed.gov/ncee/wwc/PracticeGuide/21>

Hargreaves, A., & O'Connor, M.T. (2018). *Collaborative professionalism: When teaching together means learning for all*. Thousand Oaks, CA: Sage.

Kamil, M. L., Borman, G. D., Dole, J., Kral, C. C., Salinger, T., and Torgesen, J. (2008). Improving adolescent literacy: Effective classroom and intervention practices: A Practice Guide (NCEE #2008-4027). Washington, DC: National Center for Education Evaluation and Regional Assistance, Institute of Education Sciences, U.S. Department of Education. Retrieved from <https://ies.ed.gov/ncee/wwc/PracticeGuide/8>

Michigan Association of Intermediate School Administrators General Educational Leaders Network (2016a). Essential instructional practices in early literacy: Grades K to 3. Retrieved from http://www.gomaisa.org/downloads/geIndocs/k-3_literacy_essentials.pdf

Michigan Association of Intermediate School Administrators General Educational Leaders Network (2016b). Essential instructional practices in early literacy: Grades 4 to 5. Retrieved from http://www.gomaisa.org/downloads/geIndocs/essential_instructionalliteracygr4-5.pdf

National Council of Teachers of English (2016, February). Professional knowledge for the teaching of writing. Retrieved from <http://www2.ncte.org/statement/teaching-writing/>

National Council of Teachers of English (n.d.). What anti-racist language teachers do. Retrieved from <http://www2.ncte.org/app/uploads/2018/07/WhatAntiRacistLanguageTeachersDo.pdf>

National Council of Teachers of English (n.d.). Qualities of anti-racist ELA curricula. Retrieved from <http://www2.ncte.org/app/uploads/2018/09/QualitiesAntiRacistELACurricula.pdf>

Shanahan, T., Callison, K., Carriere, C., Duke, N.K., Pearson, P.D., Schatschneider, C., & Torgesen, J. (2010). *Improving Reading Comprehension in Kindergarten through 3rd Grade* (NCES 2010-4038). Washington, DC: National Center for Educational Evaluation and Regional Assistance, Institute of Education Sciences, U.S. Department of Education. Retrieved from <https://ies.ed.gov/ncee/wwc/PracticeGuide/14>

WisExplore Grades 1 - 2 Literacy Practices Survey. (2017). Retrieved from <http://www.livebinders.com/media/get/MTYxNTA4NDY=>

WISExplore 3 - 5 Literacy Practices Survey. (2017). Retrieved from <http://www.livebinders.com/media/get/MTYxNTA4Mzk=>

WISExplore PreK - K Early Literacy Practices Survey. (2017). Retrieved from <http://www.livebinders.com/media/get/MTYxNTA4NjA=>

WISExplore Secondary Level Literacy Practices Survey. (2017). Retrieved from <http://www.livebinders.com/media/get/MTYxNTA4NzQ=>

Wisconsin Department of Public Instruction (2011). *Wisconsin's standards for English language arts*. Retrieved from <https://dpi.wi.gov/sites/default/files/imce/standards/pdf/ela-stds-app-a-revision.pdf>

Wisconsin Department of Public Instruction (n.d.a). Wisconsin's guiding principles for teaching and learning. Retrieved from <https://dpi.wi.gov/standards/guiding-principles>

Wisconsin Department of Public Instruction (n.d.b). Wisconsin's vision for English language arts. Retrieved from <https://dpi.wi.gov/sites/default/files/imce/ela/images/WI%20ELA%20Vision.png>

End Notes

- ¹ The Aspen Education and Society Program & The Council of Chief State School Officers. (2017). *Leading for Equity: Opportunities for State Education Chiefs*. Washington, D.C.: Authors. <https://ccsso.org/resource-library/leading-equity-opportunities-state-education-chiefs>
- ² Wisconsin Department of Public Instruction (n.d.b). Wisconsin's vision for English language arts. Retrieved from <https://dpi.wi.gov/sites/default/files/imce/ela/images/WI%20ELA%20Vision.png>
- ³ Hargreaves, A., & O'Connor, M.T. (2018). *Collaborative professionalism: When teaching together means learning for all*. Thousand Oaks, CA: Sage.
- ⁴ Wisconsin Department of Public Instruction (n.d.b). Wisconsin's vision for English language arts. Retrieved from <https://dpi.wi.gov/sites/default/files/imce/ela/images/WI%20ELA%20Vision.png>
- ⁵ Duke, N., Cervetti, G., & Wise, C. (2017). Learning from exemplary teachers of literacy. *The Reading Teacher*, 71(4), 395-400.
- ⁶ Wisconsin Department of Public Instruction (n.d.b). Wisconsin's vision for English language arts. Retrieved from <https://dpi.wi.gov/sites/default/files/imce/ela/images/WI%20ELA%20Vision.png>
- ⁷ Wisconsin Department of Public Instruction (2017). Wisconsin's framework for equitable multi-level systems of supports. Retrieved from <https://dpi.wi.gov/sites/default/files/imce/rti/pdf/rti-emlss-framework.pdf>
- ⁸ Wisconsin RtI Center and PBIS Network. (2017). Wisconsin's model to inform culturally responsive practices. Retrieved from <https://www.wisconsinrticenter.org/assets/files/resources/Model%20to%20Inform%20Culturally%20Responsive%20Practices.pdf>
- ⁹ International Literacy Association. (2012). *Adolescent literacy: A position statement of the International Reading Association*. Retrieved from https://www.literacyworldwide.org/docs/default-source/where-we-stand/adolescent-literacy-position-statement.pdf?sfvrsn=85a4af8e_8
- ¹⁰ Duke, N., Cervetti, G., & Wise, C. (2017). Learning from exemplary teachers of literacy. *The Reading Teacher*, 71(4), 395-400; Ladson-Billings, G. (2009). *The dreamkeepers: Successful teachers of African American children* (2nd ed.). San Francisco, CA: Jossey-Bass.
- ¹¹ Bomer, R. (2017). What would it mean for English language arts to become more culturally responsive and sustaining? *Voices from the Middle*, 24(3), 11-15.
- ¹² Ladson-Billings, G. (2009). *The dreamkeepers: Successful teachers of African American children* (2nd ed.). San Francisco, CA: Jossey-Bass; Risko, V., & Walker-Dalhouse, D. (2007). Tapping students' cultural funds of knowledge to address the achievement gap. *The Reading Teacher*, 61(1), 98-100.
- ¹³ Boutte, G.S. (2015). *Educating African American students: And how are the children?*. New York: Routledge.
- ¹⁴ Wisconsin Department of Public Instruction (n.d.). Wisconsin's strategic assessment systems (SAS) [website]. Retrieved from <https://dpi.wi.gov/strategic-assessment>
- ¹⁵ National Council of Teachers of English. (2013). *Formative assessment that truly informs instruction*. Retrieved from <http://www2.ncte.org/statement/formative-assessment/>
- ¹⁶ Wisconsin Department of Public Instruction (2017). Wisconsin's framework for equitable multi-level systems of supports. Retrieved from <https://dpi.wi.gov/sites/default/files/imce/rti/pdf/rti-emlss-framework.pdf>
- ¹⁷ International Literacy Association. (2012). *Adolescent literacy: A position statement of the International Reading Association*. Retrieved from https://www.literacyworldwide.org/docs/default-source/where-we-stand/adolescent-literacy-position-statement.pdf?sfvrsn=85a4af8e_8
- ¹⁸ Council of Writing Program Administrators, National Council of Teachers of English, & National Writing Project. (2011). *Framework for success in postsecondary writing*. Retrieved from https://www.nwp.org/img/resources/framework_for_success.pdf
- ¹⁹ Kamil, M. L., Borman, G. D., Dole, J., Kral, C. C., Salinger, T., and Torgesen, J. (2008). *Improving adolescent literacy: Effective classroom and intervention practices: A Practice Guide* (NCEE #2008-4027). Washington, DC: National Center for Education Evaluation and Regional Assistance, Institute of Education Sciences, U.S. Department of Education. Retrieved from <https://ies.ed.gov/ncee/wwc/PracticeGuide/8>
- ²⁰ National Council of Teachers of English. (2016). *Professional knowledge for the teaching of writing*. Retrieved from <http://www2.ncte.org/statement/teaching-writing/>
- ²¹ Duke, N., Cervetti, G., & Wise, C. (2017). Learning from exemplary teachers of literacy. *The Reading Teacher*, 71(4), 395-400.
- ²² Council of Writing Program Administrators, National Council of Teachers of English, & National Writing Project. (2011). *Framework for success in postsecondary writing*. Retrieved from https://www.nwp.org/img/resources/framework_for_success.pdf
- ²³ Dawson, C. (2013). Writing in the English language arts. In A. N. Applebee, & J.A. Langer (Eds.) *Writing instruction that works: Proven methods for middle and high school classrooms*. (pp. 28-49). Berkeley, CA: Teachers College Press & National Writing Project; National Council of Teachers of English. (2016). *Professional knowledge for the teaching of writing*. Retrieved from <http://www2.ncte.org/statement/teaching-writing/>

- ²⁴ Graham, S., & Harris, K. (2013). Common Core State Standards, writing, and students with LD: Recommendations. *Learning Disabilities Research & Practice*, 28(1), 2-37.; Graham, S., & Harris, K. (2011). Writing difficulties. In A. McGill-Franzen, & R.L., Allington (Eds). *Handbook of reading disability research*. (pp. 232-241). New York, NY: Routledge.
- ²⁵ National Council of Teachers of English. (2016). *Professional knowledge for the teaching of writing*. Retrieved from <http://www2.ncte.org/statement/teaching-writing/>
- ²⁶ Gallagher, K. (2011). *Write like this: Teaching real-world writing through modeling and mentor texts*. Portsmouth, NH: Stenhouse.
- ²⁷ Kamil, M. L., Borman, G. D., Dole, J., Kral, C. C., Salinger, T., and Torgesen, J. (2008). *Improving adolescent literacy: Effective classroom and intervention practices: A Practice Guide (NCEE #2008-4027)*. Washington, DC: National Center for Education Evaluation and Regional Assistance, Institute of Education Sciences, U.S. Department of Education. Retrieved from <https://ies.ed.gov/ncee/wwc/PracticeGuide/8>
- ²⁸ Devereaux, M.D. (2014). *Teaching about dialect variations and language in secondary English classrooms: Power, prestige, and prejudice*. New York: Routledge.
- ²⁹ Council of Writing Program Administrators, National Council of Teachers of English, & National Writing Project. (2011). *Framework for success in postsecondary writing*. Retrieved from https://www.nwp.org/img/resources/framework_for_success.pdf
- ³⁰ Bishop, R.S. (1990). Mirrors, windows, and sliding glass doors. *Perspectives*, 1(3), ix-xi.
- ³¹ Bishop, R.S. (1990). Mirrors, windows, and sliding glass doors. *Perspectives*, 1(3), ix-xi.
- ³² International Literacy Association. (2017). *Characteristics of culturally sustaining and academically rigorous classrooms [Literacy leadership brief]*. Newark, DE: Author. Retrieved from https://www.literacyworldwide.org/docs/default-source/where-we-stand/ila-culturally-sustaining-classrooms-brief.pdf?sfvrsn=7b80a68e_10
- ³³ Teaching Tolerance. (2014). *Appendix D: A tool for selecting diverse texts*. Retrieved from http://www.tolerance.org/sites/default/files/general/Appendix%20D%20Text%20Selection%20Tool%202014_final.pdf
- ³⁴ Ivey, G., & Johnston, P.H. (2015). Engaged reading as a collaborative transformative practice. *Journal of Literacy Research*, 47(3), p. 297-327. <https://doi.org/10.1177/1086296X15619731>
- ³⁵ Achieve the Core. (2017). *Aligning content and practice: The design of the instructional practice guide*. Retrieved from <https://achievethecore.org/page/3119/aligning-content-and-practice-the-design-of-the-instructional-practice-guide>
- ³⁶ Christensen, L.M. (2009). *Teaching for Joy and Justice: Re-imagining the Language Arts Classroom*. Milwaukee, WI: Rethinking Schools.; Lewison, M., Flint, A.S., & Van Sluys, K. (2002). Taking on critical literacy: The journey of newcomers and novices. *Language Arts* 79(5), 382-392; Luke, A. (2004). Foreword. in McLaughlin, M. and Devoogd, G. (2004). *Critical literacy: Enhancing students' comprehension of text*. New York: Scholastic.
- ³⁷ Devereaux, M.D. (2014). *Teaching about dialect variations and language in secondary English classrooms: Power, prestige, and prejudice*. New York: Routledge.; Hollie, S. (2017). *Culturally and linguistically responsive teaching and learning: Classroom practices for student success, grades K - 2* (2nd ed.). Huntington Beach, CA: Shell Education.
- ³⁸ Ivey, G., & Johnston, P.H. (2015). Engaged reading as a collaborative transformative practice. *Journal of Literacy Research*, 47(3), p. 297-327. <https://doi.org/10.1177/1086296X15619731>; Miller, D., & Moss, B. (2013). *No more independent reading without support*. Portsmouth, NH: Heinemann.
- ³⁹ Ivey, G., & Johnston, P.H. (2015). Engaged reading as a collaborative transformative practice. *Journal of Literacy Research*, 47(3), p. 297-327. <https://doi.org/10.1177/1086296X15619731>
- ⁴⁰ Tatum, A. (2009). *Reading for their life: (Re)building the textual lineages of African American adolescent males*. Portsmouth, NH: Heinemann.
- ⁴¹ Ivey, G., & Johnston, P.H. (2015). Engaged reading as a collaborative transformative practice. *Journal of Literacy Research*, 47(3), p. 297-327. <https://doi.org/10.1177/1086296X15619731>
- ⁴² Dweck, C.S. (2006). *Mindset: The new psychology of success*. New York, NY: Ballantine.; Graham, S., & Perin, D. (2007). *Writing next: Effective strategies to improve writing of adolescents in middle and high schools - A report to Carnegie Corporation of New York*. Washington, DC: Alliance for Excellent Education. Retrieved from https://www.carnegie.org/media/filer_public/3c/f5/3cf58727-34f4-4140-a014-723a00ac56f7/ccny_report_2007_writing.pdf
- ⁴³ International Literacy Association. (2012). *Adolescent literacy: A position statement of the International Reading Association*. Retrieved from https://www.literacyworldwide.org/docs/default-source/where-we-stand/adolescent-literacy-position-statement.pdf?sfvrsn=85a4af8e_8; National Council of Teachers of English. (2016). *Professional knowledge for the teaching of writing*. Retrieved from <http://www2.ncte.org/statement/teaching-writing/>
- ⁴⁴ Hattie, J. (2012). *Visible learning for teachers: Maximizing impact on learning*. New York: Routledge.

- ⁴⁵ Dawson, C. (2013). Writing in the English language arts. In A. N. Applebee, & J.A. Langer (Eds.) *Writing instruction that works: Proven methods for middle and high school classrooms*. (pp. 28-49). Berkeley, CA: Teachers College Press & National Writing Project.; Graham, S., & Harris, K. (2013). Common Core State Standards, writing, and students with LD: Recommendations. *Learning Disabilities Research & Practice*, 28(1), 2-37.
- ⁴⁶ Gallagher, K. (2011). *Write like this: Teaching real-world writing through modeling and mentor texts*. Portsmouth, NH: Stenhouse.; Wood Ray, K. (2006). *Study driven: A framework for planning units of study in the writing workshop*. Portsmouth, NH: Heinemann.
- ⁴⁷ Risko, V., & Walker-Dalhouse, D. (2007). Tapping students' cultural funds of knowledge to address the achievement gap. *The Reading Teacher*, 61(1), 98-100.
- ⁴⁸ Bomer, R. (2017). What would it mean for English language arts to become more culturally responsive and sustaining? *Voices from the middle*, 24(3), 11-15.
- ⁴⁹ Paris, D. (2012). Culturally sustaining pedagogy: A needed change in stance, terminology, and practice. *Educational Researcher*, 41, 93-97.
- ⁵⁰ Hollie, S., & Allen, B. (2018). *Culturally and linguistically responsive teaching and learning: Classroom practices for student success*. Huntington Beach, CA: Shell Education.
- ⁵¹ Hollie, S., & Allen, B. (2018). *Culturally and linguistically responsive teaching and learning: Classroom practices for student success*. Huntington Beach, CA: Shell Education.
- ⁵² Wisconsin RtI Center. (2017). Response to intervention glossary. Retrieved from <https://www.wisconsinrticenter.org/educators/understanding-rti-a-systems-view/glossary.html>
- ⁵³ Swales, John (1990) *Genre analysis: English in academic and research settings*. Cambridge: Cambridge University Press.
- ⁵⁴ Council of Chief State School Officers. (2013). InTASC model core teaching standards and learning progressions for teachers 1.0. Retrieved from https://ccsso.org/sites/default/files/201712/2013_INTASC_Learning_Progressions_for_Teachers.pdf.
- ⁵⁵ Wisconsin RtI Center. (2015). Goal setting and progress monitoring resources for learners who have exceeded benchmarks. Retrieved from <https://www.wisconsinrticenter.org/assets/files/SPR/Day2/Prog%20Mon%20Resources%20For%20Learners.pdf>
- ⁵⁶ Wisconsin RtI Center. (2017). Response to intervention glossary. Retrieved from <https://www.wisconsinrticenter.org/educators/understanding-rti-a-systems-view/glossary.html>
- ⁵⁷ Hack Education. (2014). New literacies in the classroom. Retrieved from <http://hackededucation.com/2014/11/11/new-literacies-in-the-classroom>; New Learning. Literacies | New Learning. Retrieved from <http://newlearningonline.com/literacies>.
- ⁵⁸ Holland, R., Dorfman, L., and Trautman, C. (2013). Reading, writing, and mentor texts: Imagining possibilities." Host T. Baker. *Improving Writing and Learning in the Nation's Schools, National Writing Project*, March 28, 2013. Audio, 1:00:15 <https://www.nwp.org/cs/public/print/resource/4090>.
- ⁵⁹ Jackson, A. (2012). Multiple perspectives in an international classroom. Retrieved from http://blogs.edweek.org/edweek/global_learning/2012/11/multiple_perspectives_in_an_international_classroom.html.
- ⁶⁰ What is responsive teaching? (n.d.). Retrieved July 3, 2019, from <http://www.learnalberta.ca/content/rtl/Workshops/Ws1bottem.htm>
- ⁶¹ Rhetorical context. (n.d.). Retrieved from <https://writing.colostate.edu/guides/teaching/fys/rhetcontext.cfm>
- ⁶² Wisconsin RtI Center. (2017). Response to intervention glossary. Retrieved from <https://www.wisconsinrticenter.org/educators/understanding-rti-a-systems-view/glossary.html>
- ⁶³ Johnson, N.J., Koss, M.D., & Martinez, M. (2017). Through the sliding glass door: #EmpowerTheReader." *The Reading Teacher* 71, (5): 569-77. doi:10.1002/trtr.1659; Simms Bishop, R. (1990). Windows, mirrors, and sliding glass doors. *Perspectives: Choosing and Using Books for the Classroom*, 3: Retrieved from <https://scenicregional.org/wp-content/uploads/2017/08/Mirrors-Windows-and-Sliding-Glass-Doors.pdf>