

## New Resources

DPI and the Department of Children and Families (DCF) developed three resources to help outline the responsibilities under the Every Student Succeeds Act (ESSA) of local education agencies (LEA's) and child welfare agencies (CWA's). We hope these resources will help to provide answers to the most frequently asked questions around educational stability for children placed in out-of-home care.

The [Parent, Persons Acting as a Parent, and Surrogate Parent FAQ](#) defines the roles and responsibilities of "parent", "person acting as the parent of a child", and "surrogate parent".

The [Educational Services for Children Placed in Foster Care FAQ](#) includes the most common questions received by DCF and DPI. Questions are organized in sections from Best Interest to School Funding. This list is not exhaustive. As always, if you have additional questions, please reach out to your state foster care point of contact at DCF and DPI. We have also developed a [glossary](#) to build a more common understanding of the terms included in the FAQ.

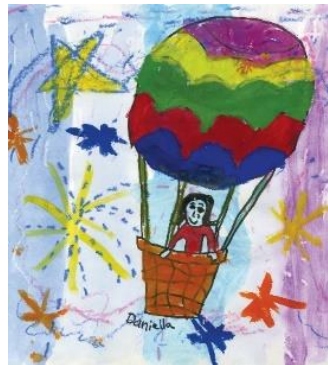
The Points of Contact roles and responsibilities documents are available to outline the general duties, best practice recommendations, and useful resources for the [Education Points of Contact](#) and the [Foster Care Points of Contact](#).

## Update Foster Care Point of Contacts!

Please ensure the identified LEA Foster Care Point of Contact is up-to-date in the School Directory. The information can be updated via the School Directory application online (directions to access the directory are [here](#)). Thank you!

## Education Passport

DCF [Education Passport](#) notification form provides more information to the local school, including information about extra curricular activities and transportation plans. While the Education Passport is not a requirement of CWA's, its use is recommended for the purpose of increasing information sharing to more effectively support students. Connect with your local Education Point of Contact at the CWA to learn how you may collaborate in using the Education Passport or other supporting documents.



## Wisconsin DPI Links

- [DPI Out of Home Care website](#)
- [Promoting Excellence for All: eCourse](#)
- [Wisconsin Education Calendar](#)
- [Trauma-Sensitive Schools](#)

## Other Links

- [DCF - Education Points of Contact Map](#)
- [Disproportionality Technical Assistance NETWORK Calendar](#)

## State Foster Care Point of Contact Retirement and New Contact

It is with mixed feelings we say congratulations to Mark Mitchell for his retirement from the state. Over 33 years of experience and his tireless efforts will be greatly missed. The impact he has made for children and those who support the youth of the state is immeasurable. Words cannot express our deepest appreciation. Thank you Mark.

Wisconsin's new State Foster Care Point of Contact is Kyle Peaden. He can be reached at [kyle.peaden@dpi.wi.gov](mailto:kyle.peaden@dpi.wi.gov) or 608-266-5404.

## Professional Development Opportunities

Conference	Date	Location
<a href="#">Mental Health and Behavior Summit</a>	September 25-26	Portage
<a href="#">Building Resiliency &amp; Creating Joyful Learning in Challenging Times</a>	October 4-5	Appleton
<a href="#">State Superintendent's Conference on Special Education &amp; Pupil Services Leadership Issues</a>	October 9-10	Wisconsin Dells
<a href="#">Children Come First Conference</a>	November 12-13	Wisconsin Dells

Out-of-Home Care e-Brief is published by the Department of Public Instruction. Get a PDF version of this newsletter [here](#)

Contacts: Kyle Peaden  
 State Foster Care Point of Contact  
 (608) 266-5404  
[kyle.peaden@dpi.wi.gov](mailto:kyle.peaden@dpi.wi.gov)

Susan Piazza  
 Assistant Director  
 (608) 266-2813  
[susan.piazza@dpi.wi.gov](mailto:susan.piazza@dpi.wi.gov)

The Wisconsin Department of Public Instruction does not discriminate on the basis of sex, race, color, religion, creed, age, national origin, ancestry, pregnancy, marital status or parental status, sexual orientation, or disability.