



Wisconsin Digital Learning Data

Highlights from May 2014

DPI Data Collection

May 2014 Digital Learning Survey

330 Responses

73.8 %

n= 447 LEAs



May 2014 Digital Learning Survey

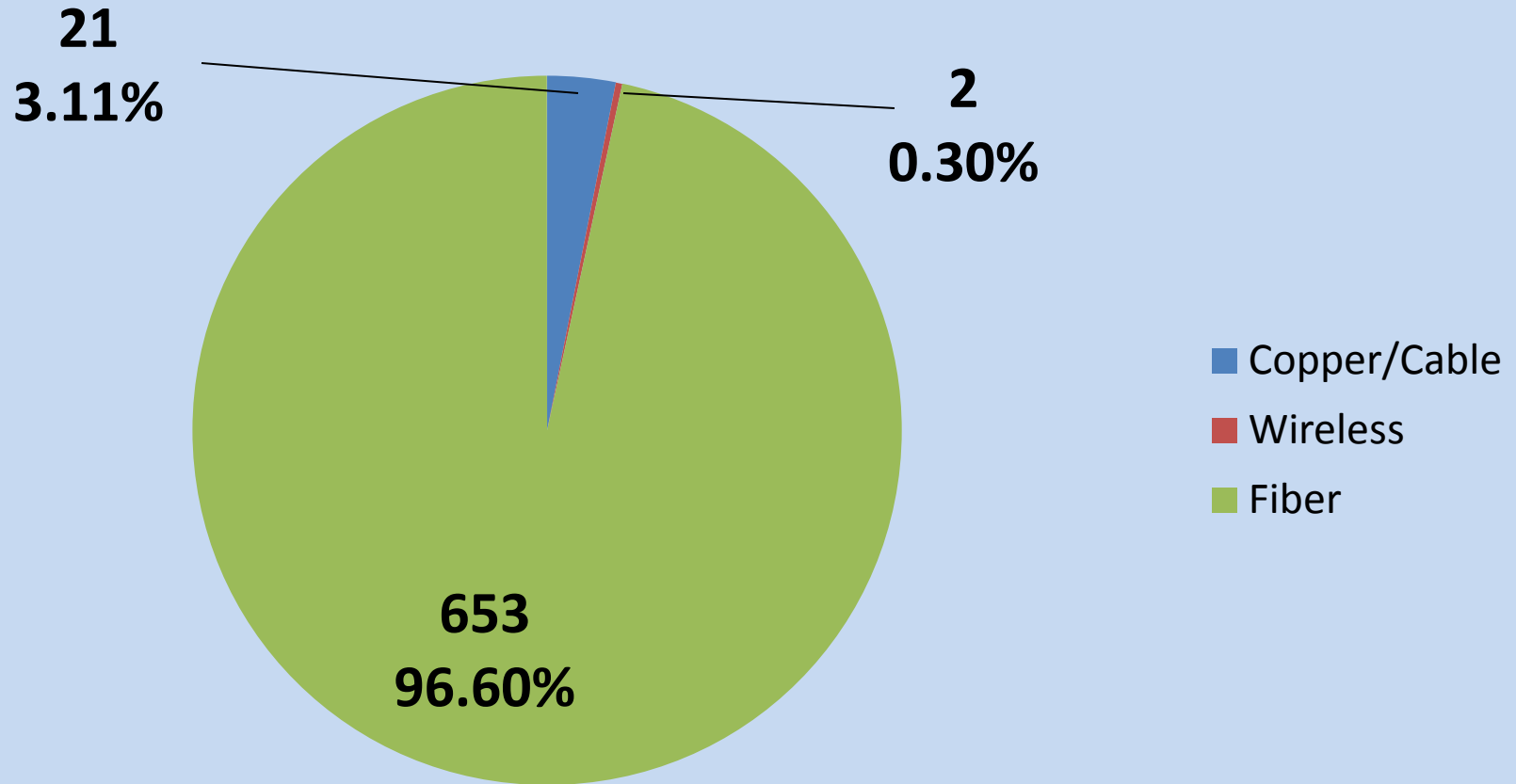
**Average District
Peak Broadband
Capacity**

270 mbps



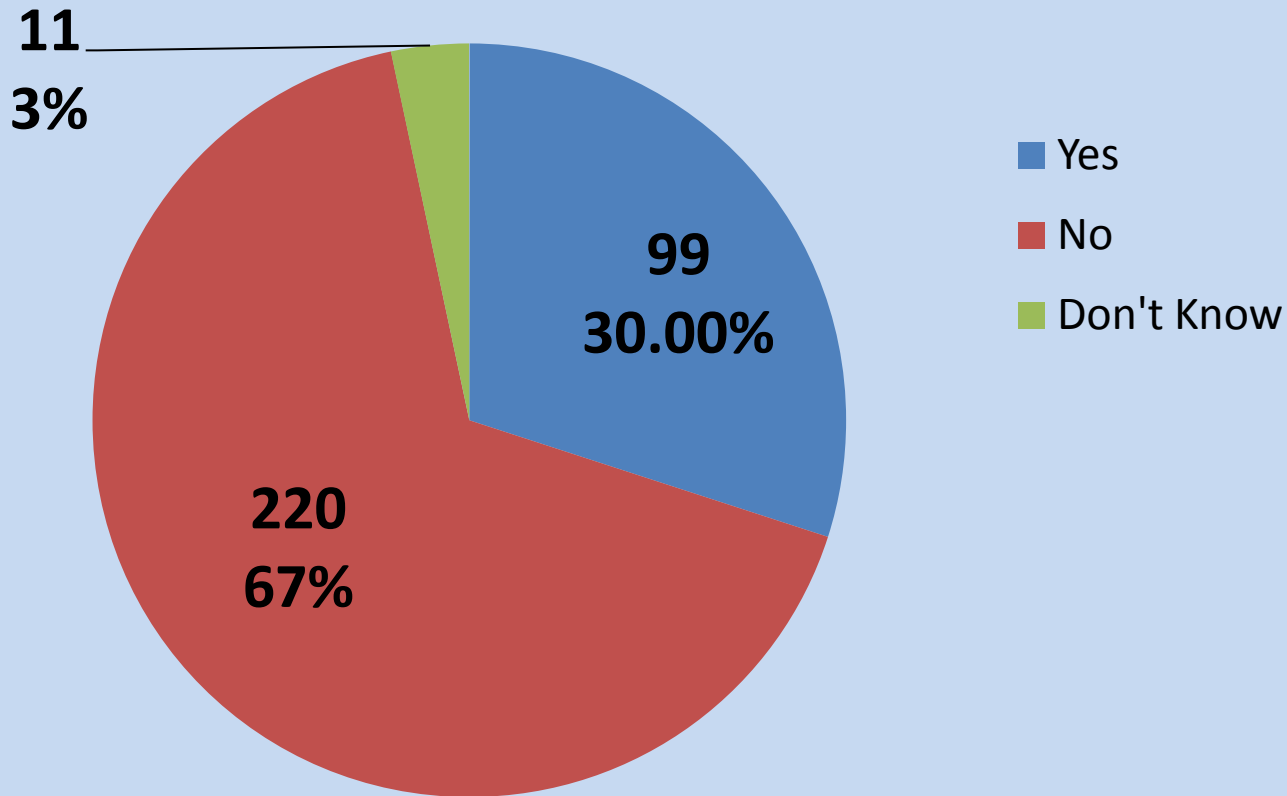
May 2014 Digital Learning Survey

Connection to District Demarcation



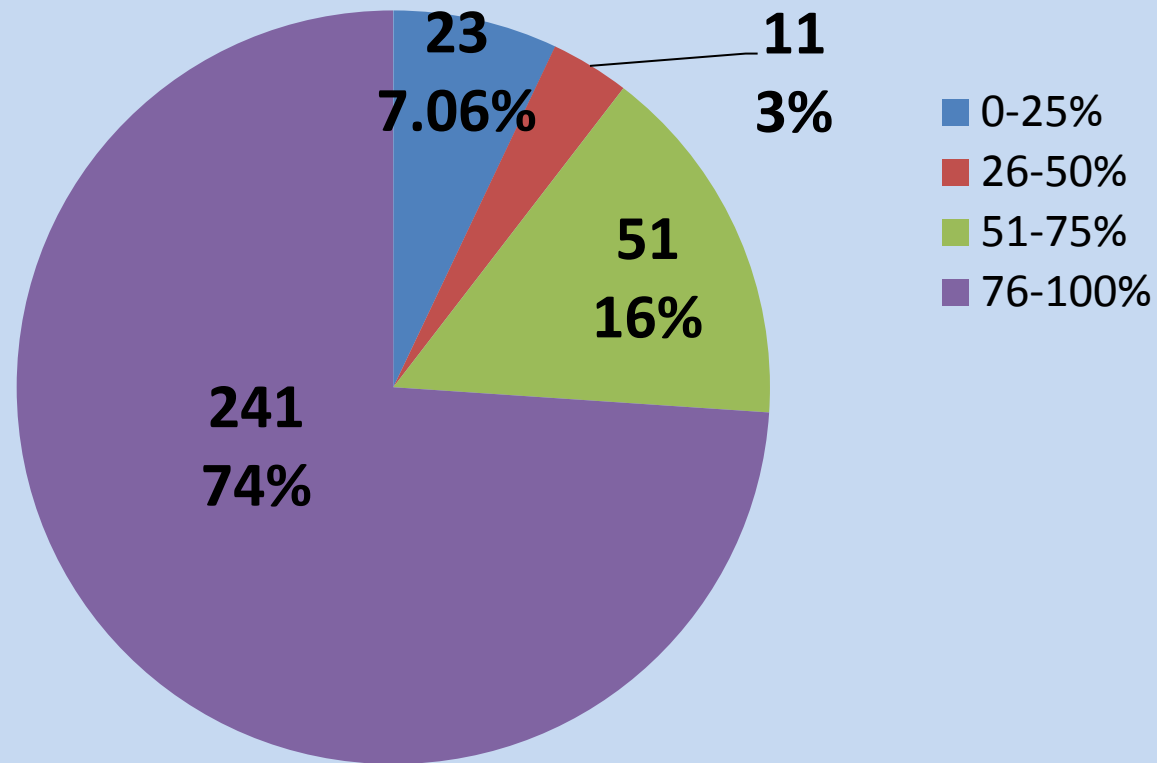
May 2014 Digital Learning Survey

Does District Throttle to Manage Bandwidth?



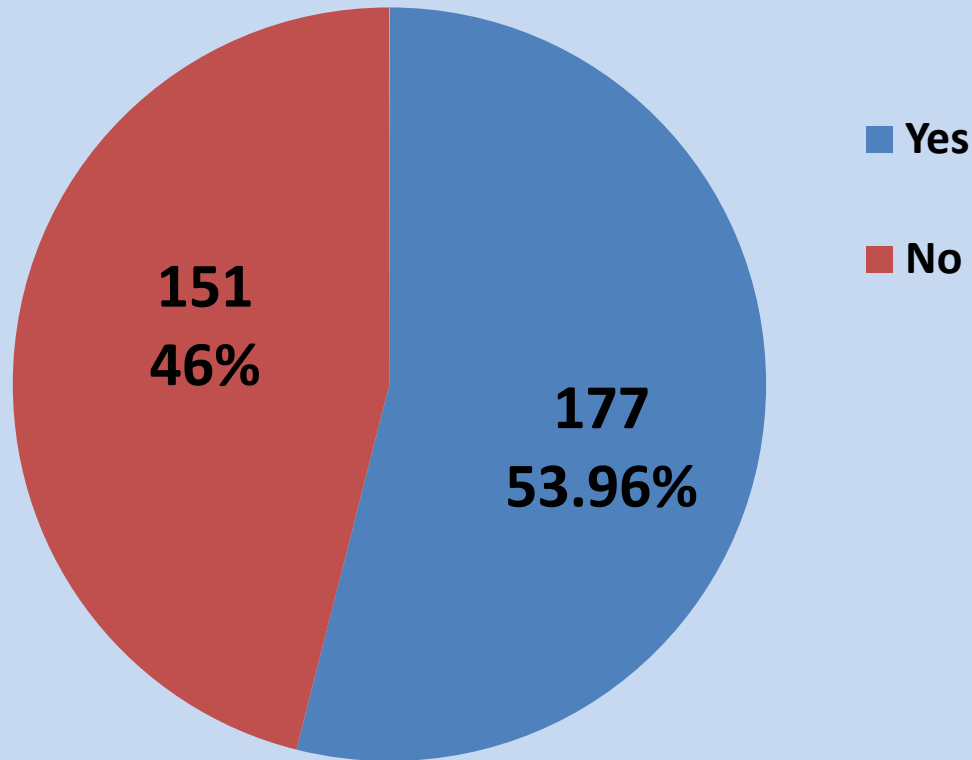
May 2014 Digital Learning Survey

Percent of Schools in District with Adequate Wi-Fi



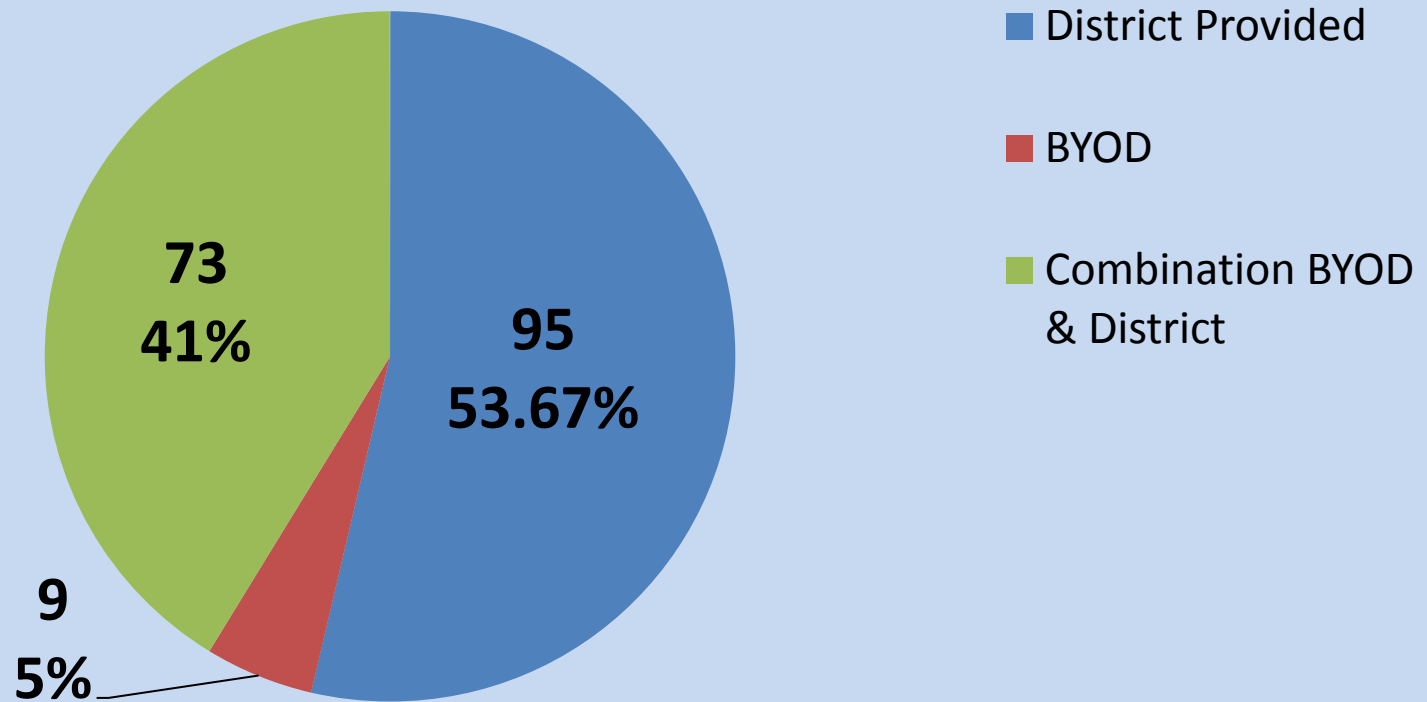
May 2014 Digital Learning Survey

Districts with 1-to-1 Program



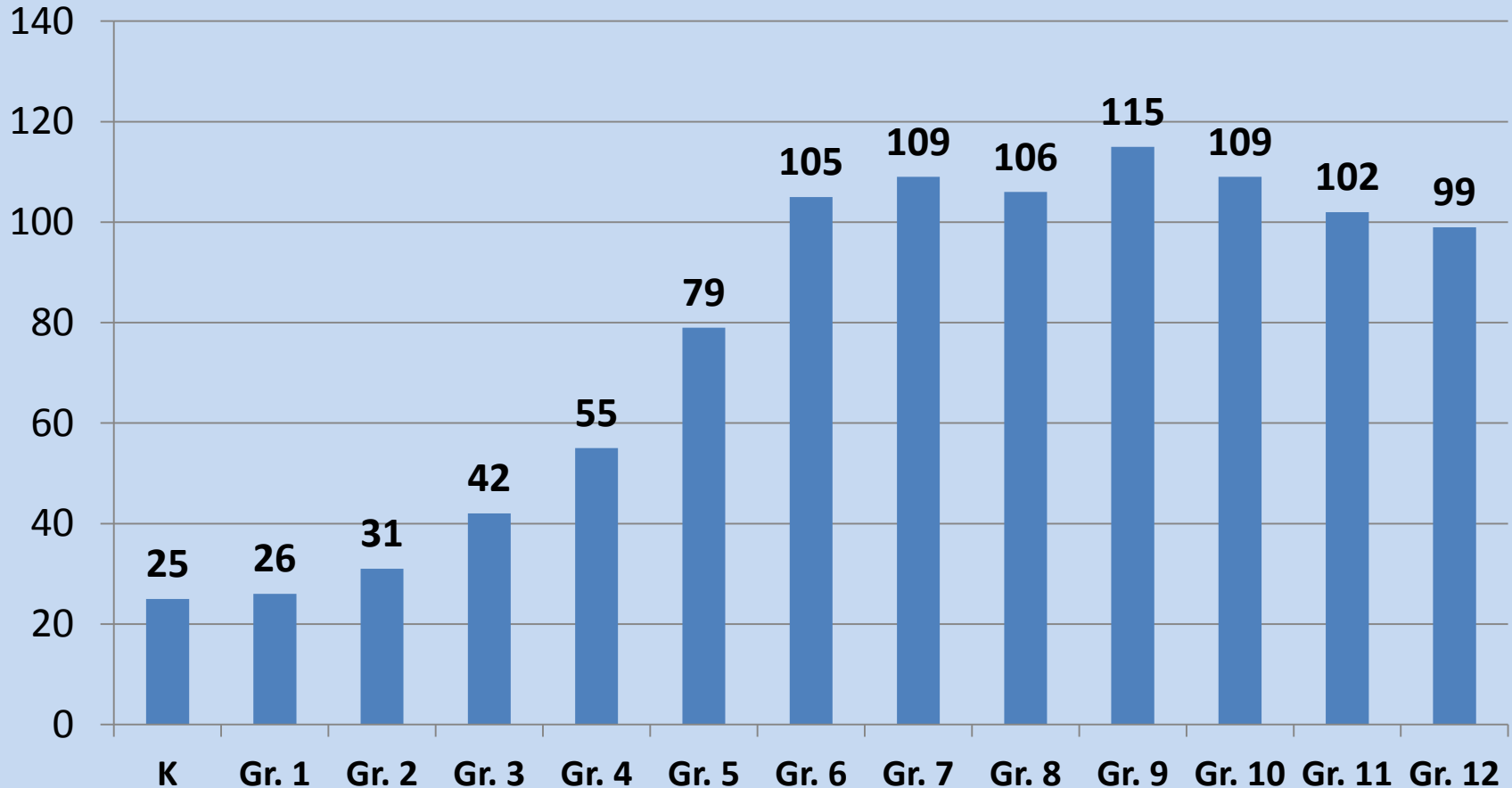
May 2014 Digital Learning Survey

Districts with 1-to-1 Program



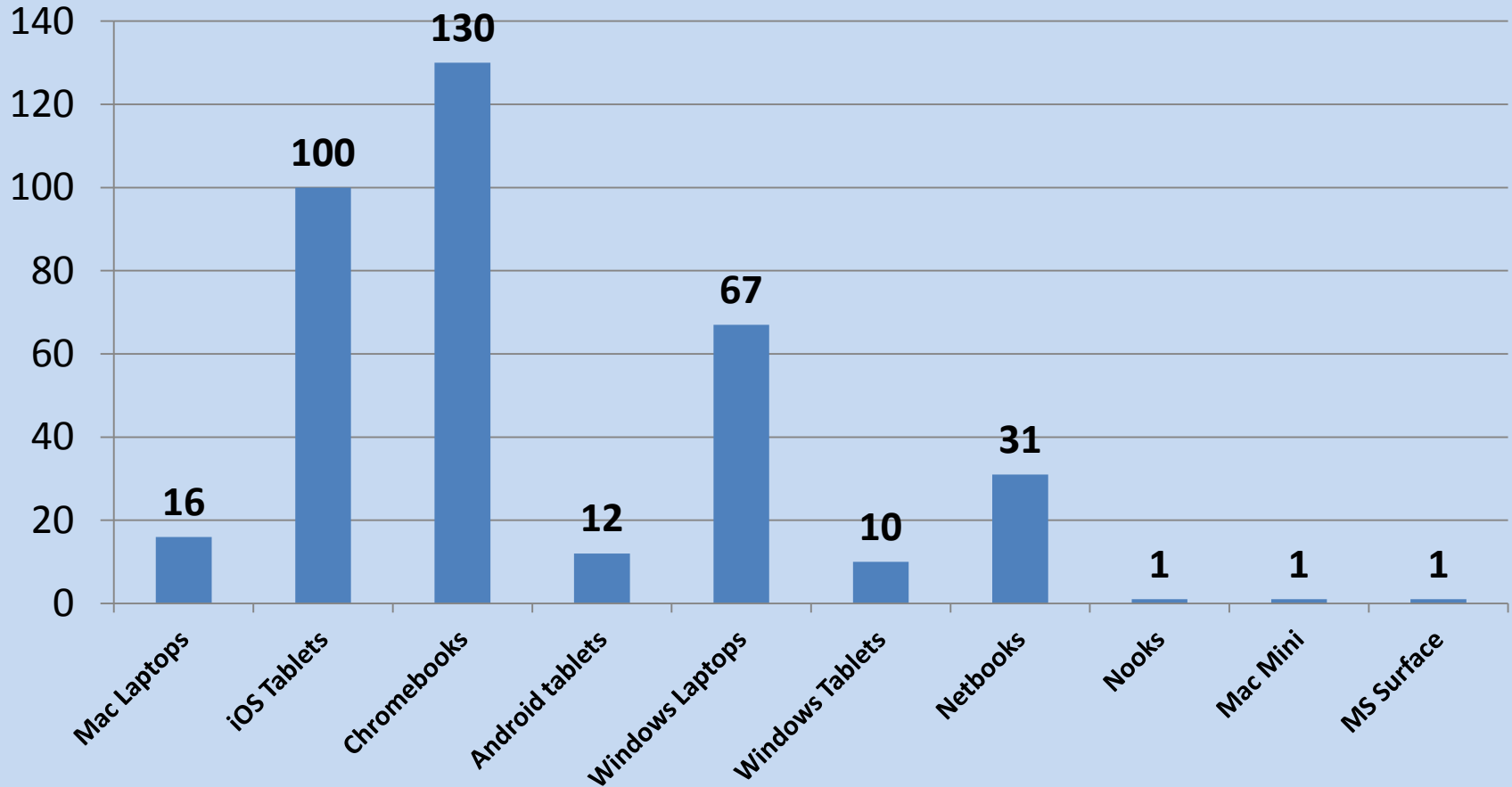
May 2014 Digital Learning Survey

Districts with 1-to-1 Implentation by Grade Level



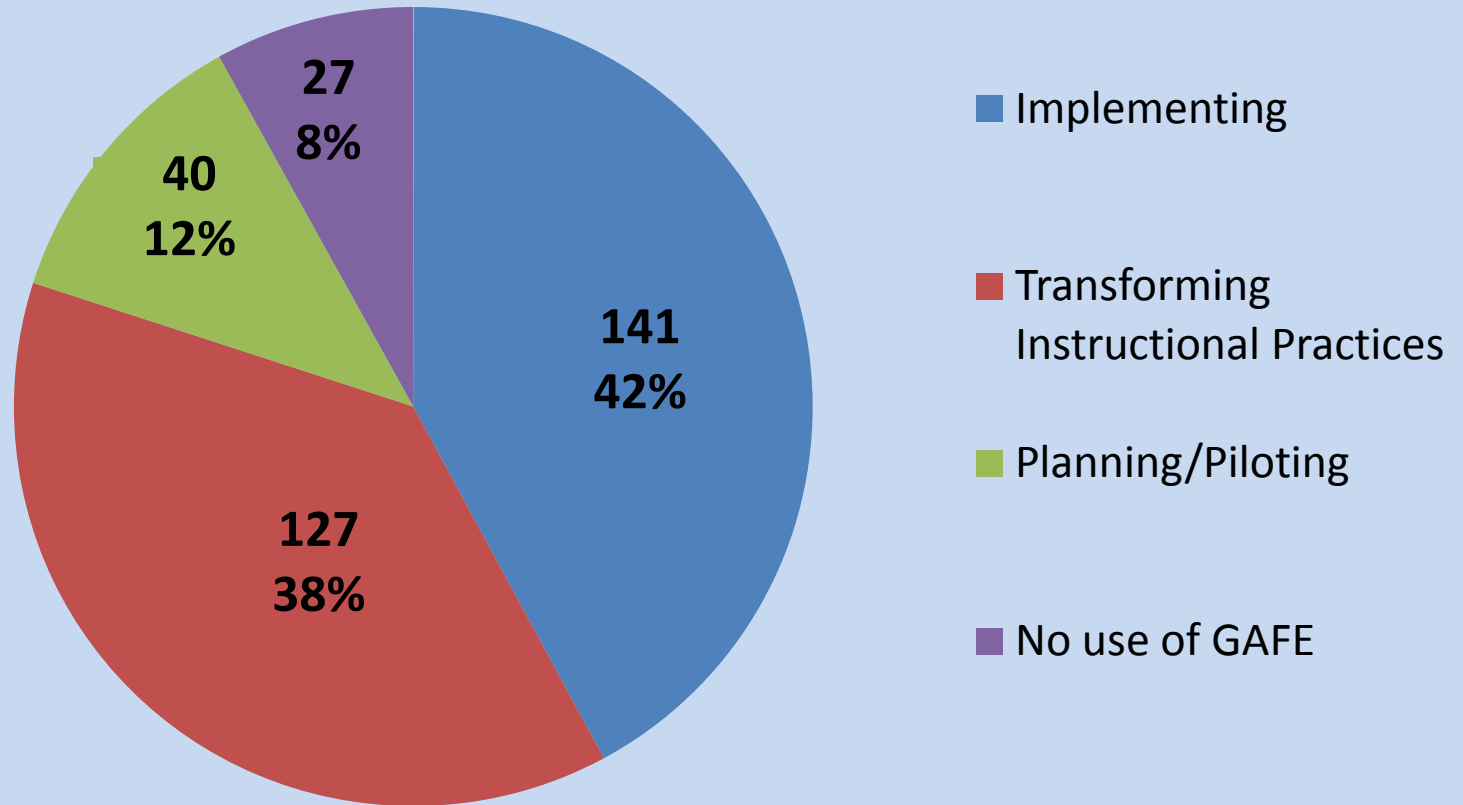
May 2014 Digital Learning Survey

Devices used in 1-to-1 Implementations



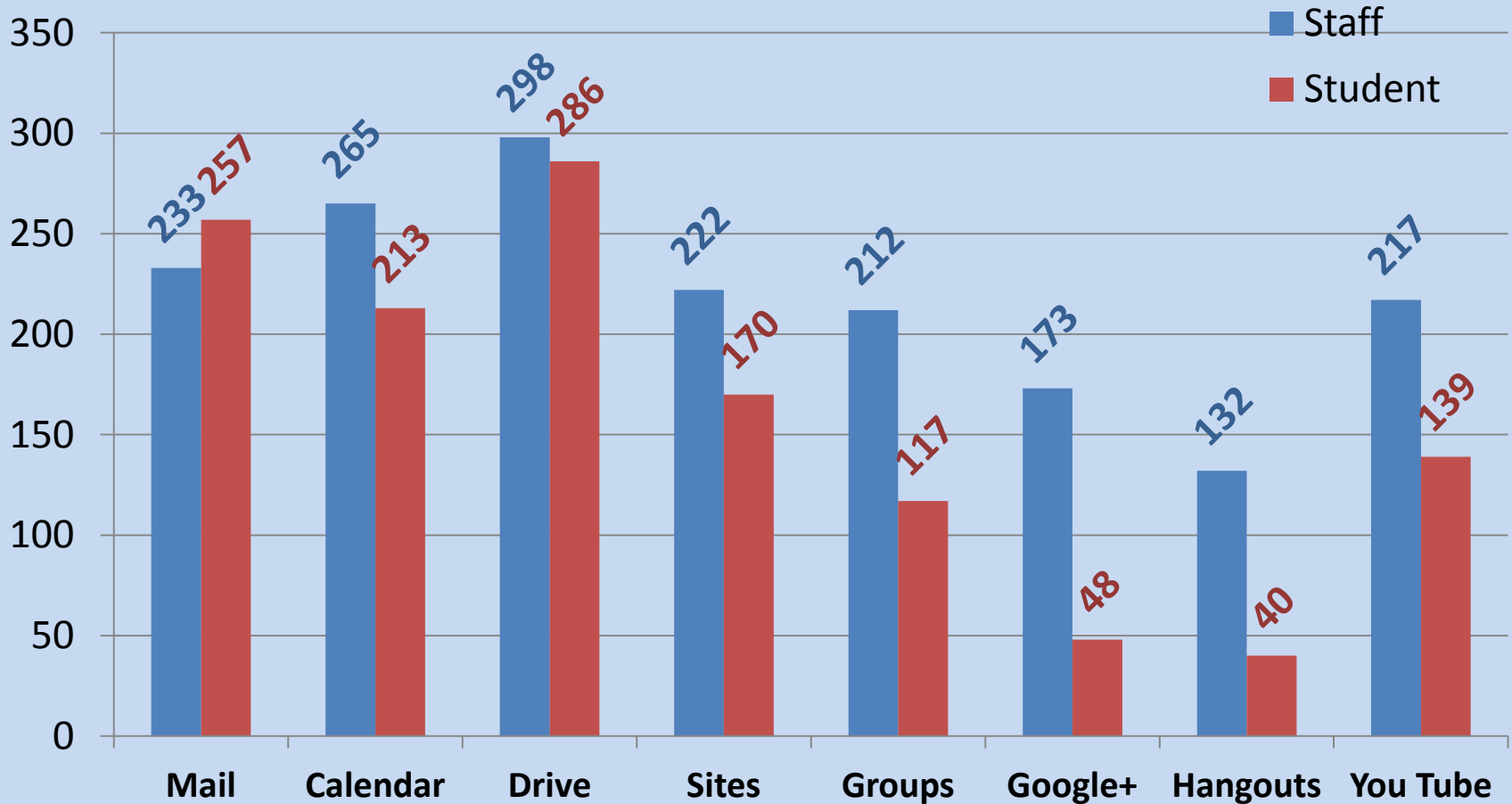
May 2014 Digital Learning Survey

District Self-assessment of GAFE Use



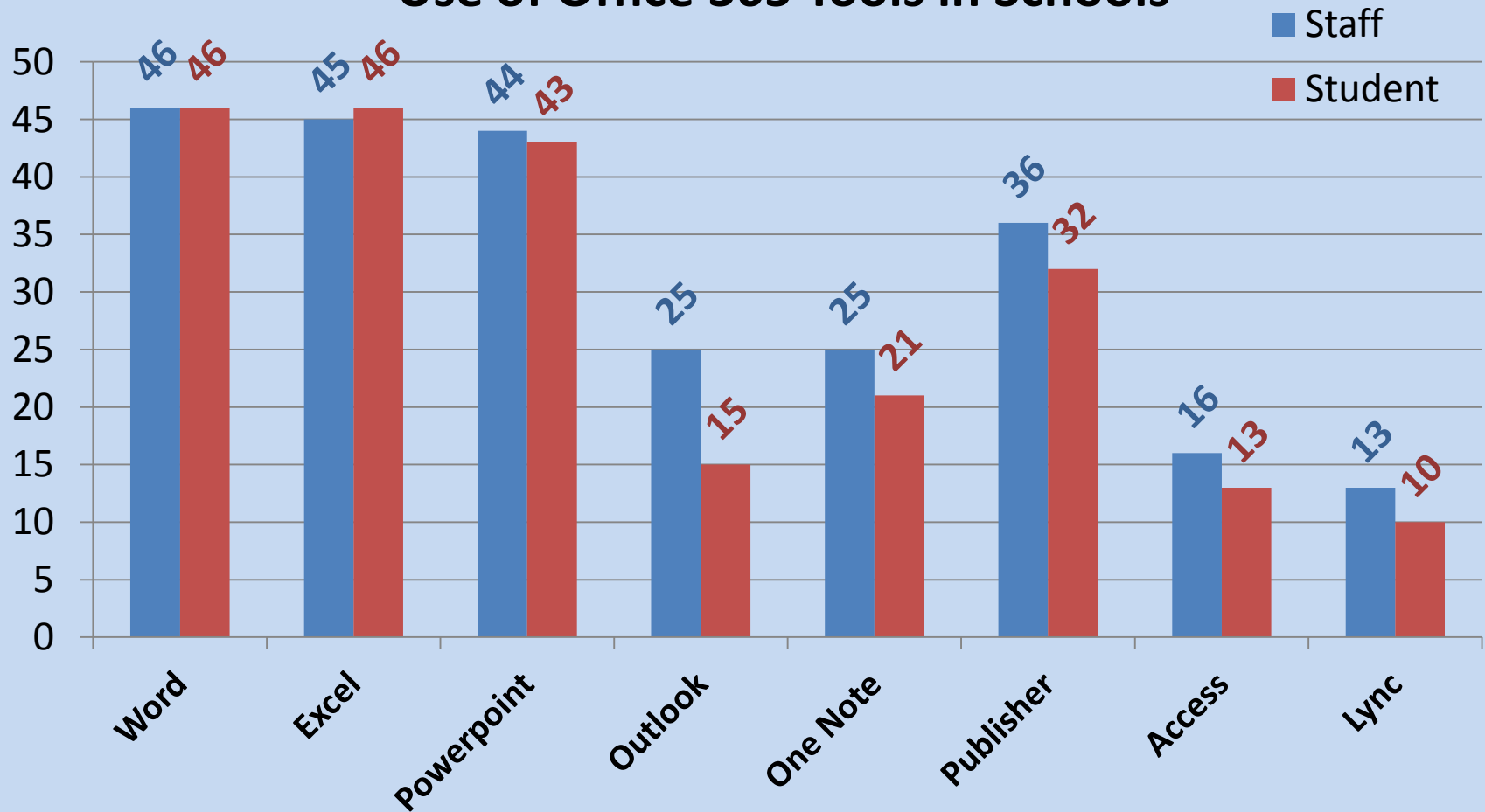
May 2014 Digital Learning Survey

Use of Google Tools in Schools



May 2014 Digital Learning Survey

Use of Office 365 Tools in Schools



May 2014 Digital Learning Survey

Technology Fee

49 Districts - \$34.15 Average

Technology Insurance

27 Districts - \$34.61 Average

4 Districts Charge BOTH



May 2014 Digital Learning Survey

Formal Technology Replacement Cycle

262 Replied YES

1-2 Years: **2 Districts**

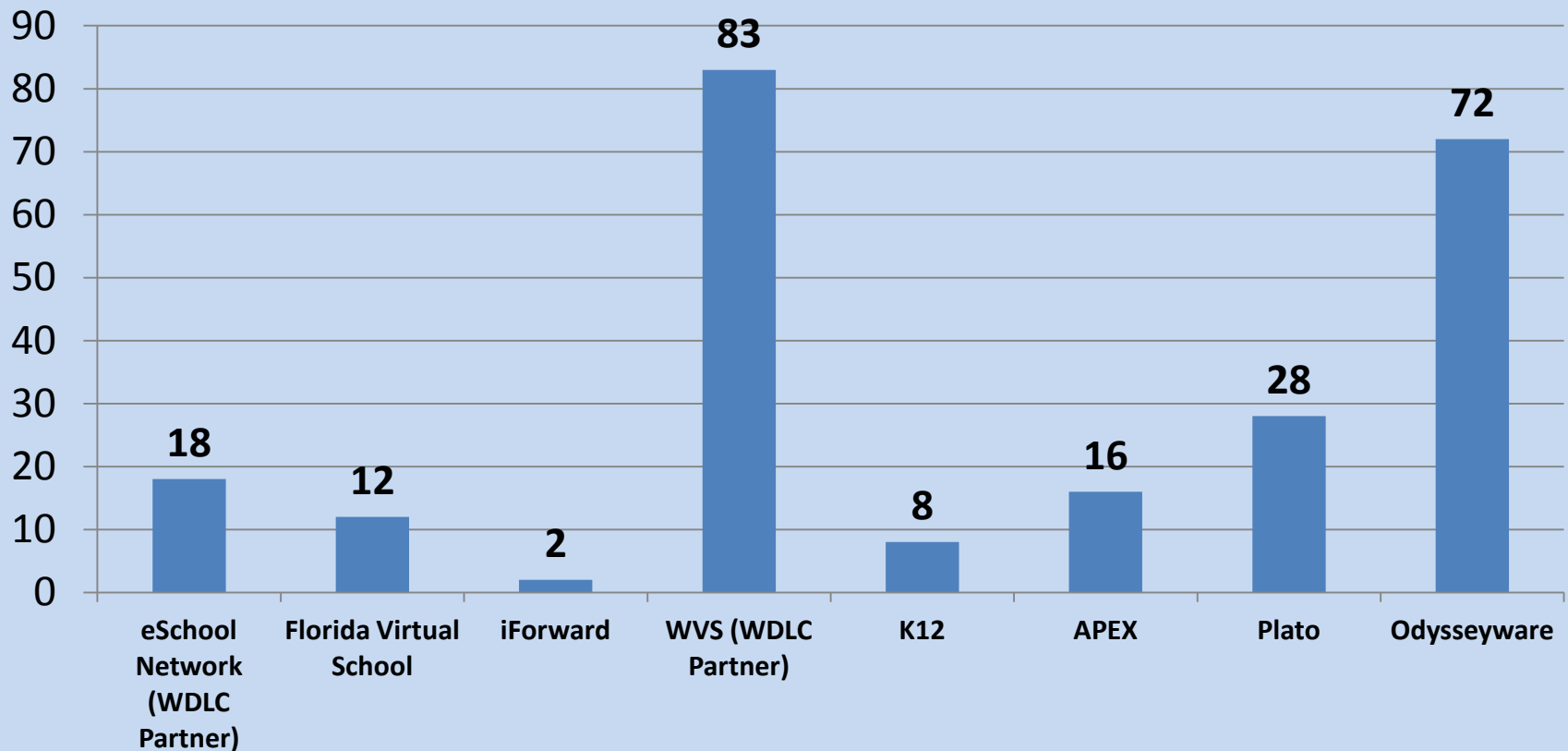
3-4 Years: **142 Districts**

5+ Years: **128 Districts**



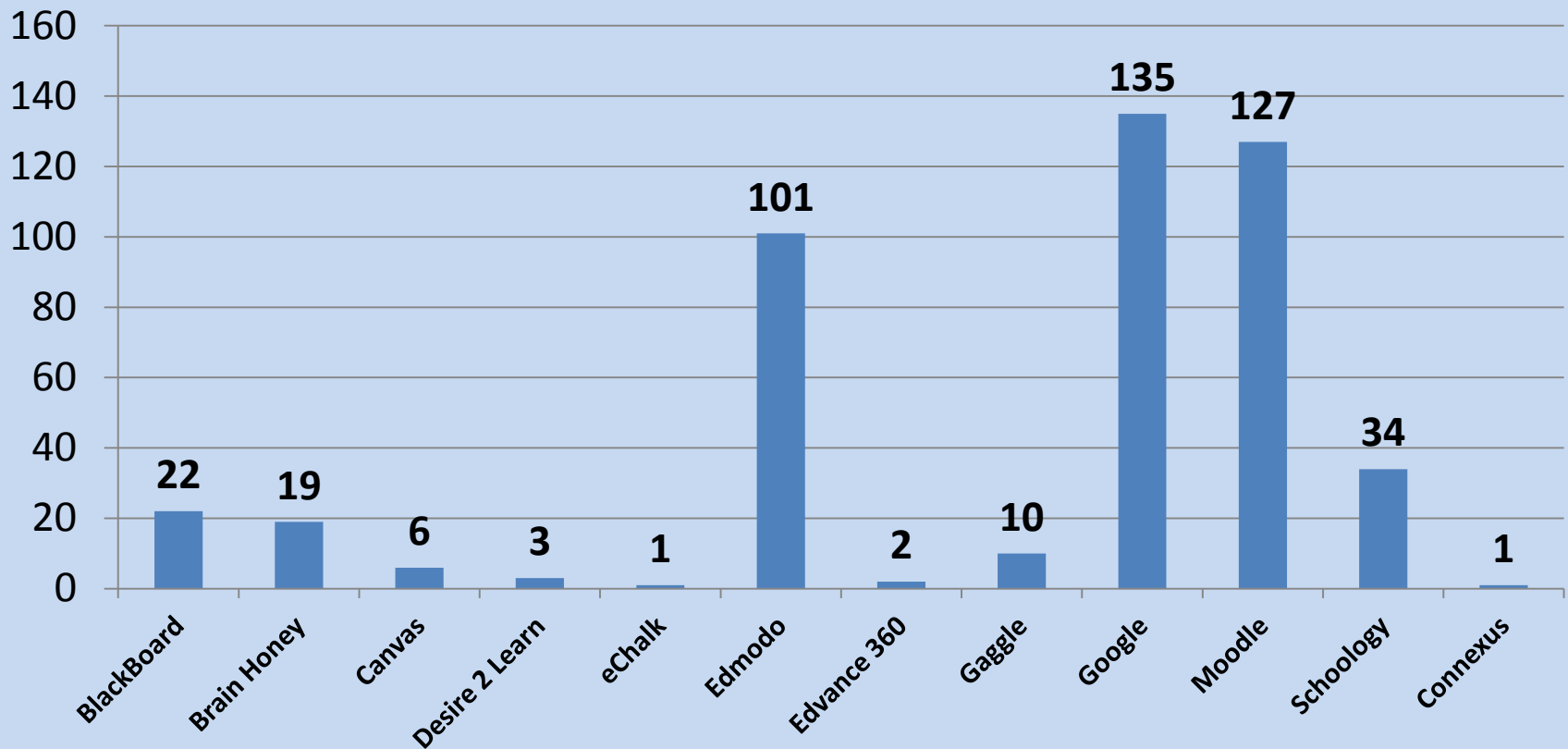
Spring Digital Learning Survey

Source of District Provided/Purchased Online Content



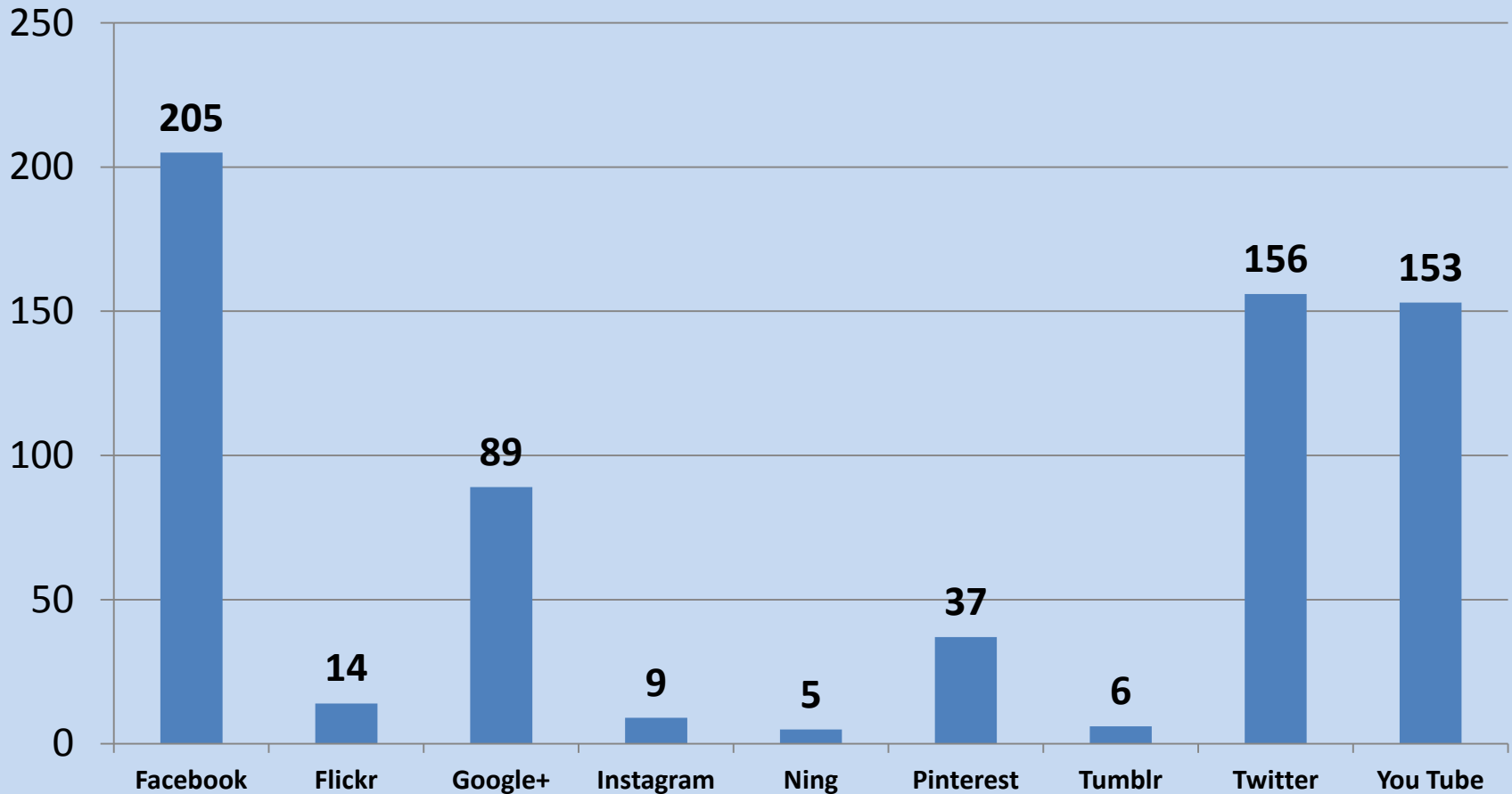
Spring Digital Learning Survey

Learning Management Systems Used for Online/Blended Learning



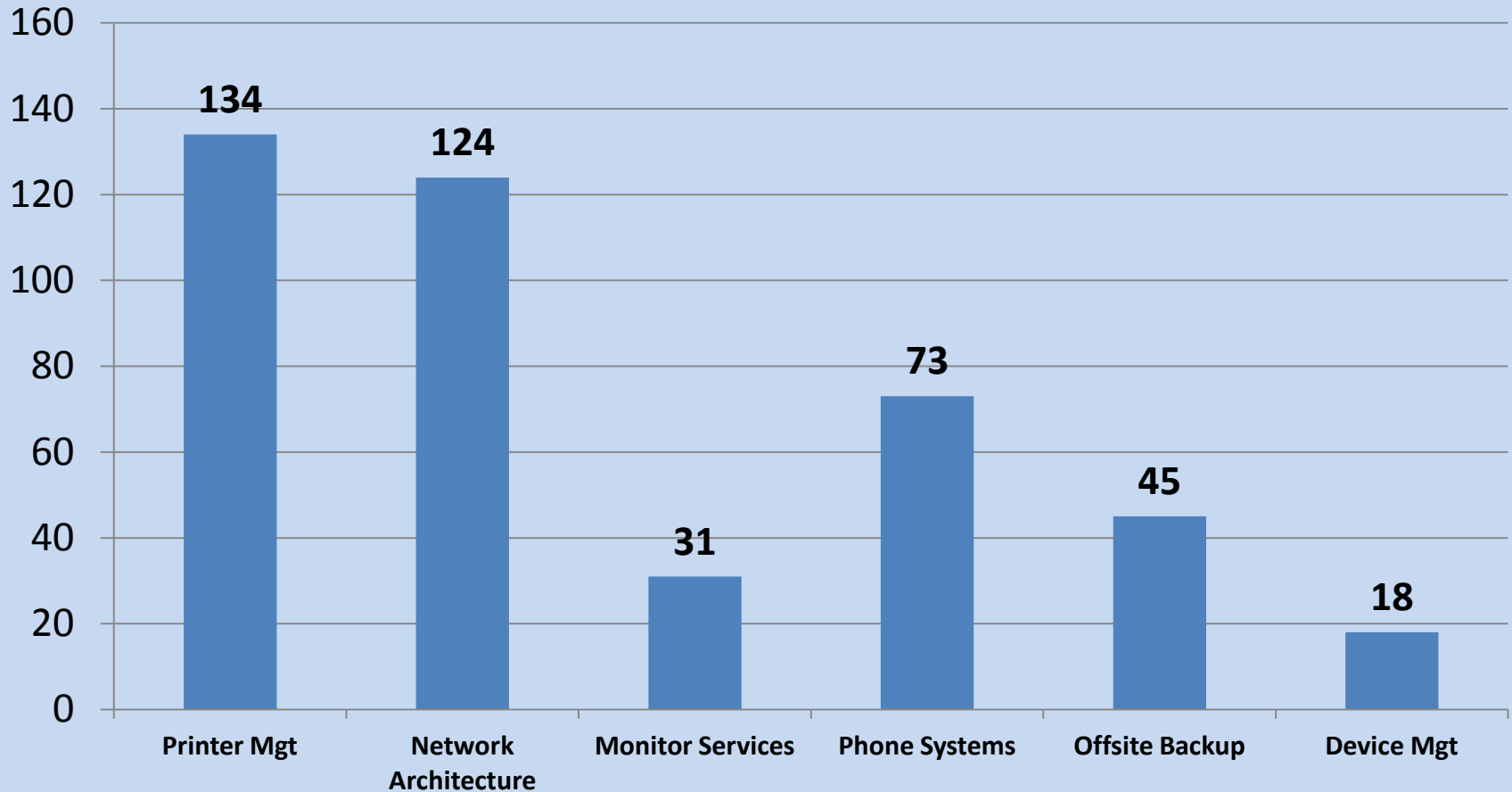
Spring Digital Learning Survey

Social Media Use by District



Spring Digital Learning Survey

District Wide Services Outsourced



Spring Digital Learning Survey

District Top Needs: 2015-17 Biennium

