



Energy Career Pathway
 <Name of Region>
 2022-2024

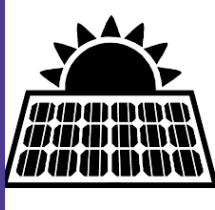


EXPLORE: Click on the links to find the job titles that seem most interesting to you to learn more! Save any jobs you are interested in from this career pathway in your XELLO account so that you can create an Academic and Career Plan (ACP) later on.

Educational Level May also require work experience	Energy Generation & Conservation	Energy Transmission, Distribution & Storage
High School Diploma, Certification	Solar PV Installer * <input type="radio"/> Electrical & Gas Power Line Helper * <input type="radio"/> Utility Locator * <input type="radio"/> Vegetation Management <input type="radio"/> Customer Service Rep * <input type="radio"/> Range \$xxx,xxx-xxx,xxx	
Certification or Technical Diploma	Distribution Generation Operator <input type="radio"/> Solar/Wind Energy Technician * <input type="radio"/> Building Automation Technician * <input type="radio"/> Energy Auditor <input type="radio"/> Residential HVAC Technician * <input type="radio"/> Range \$xxx,xxx-xxx,xxx	Lineworker * <input type="radio"/> Service & Metering Technician * <input type="radio"/> Power Distributor & Dispatcher * <input type="radio"/> Utility Technician * <input type="radio"/> Range \$xxx,xxx-xxx,xxx
Registered Apprenticeship	Substation Electrician * <input type="radio"/> Apprentice Plant Attendant * <input type="radio"/> Range \$xxx,xxx-xxx,xxx	Lineworker * <input type="radio"/> Metering Technician * <input type="radio"/> Electrical Apprentice * <input type="radio"/> Range \$xxx,xxx-xxx,xxx
Associate Degree	Substation Technician Electrician * <input type="radio"/> Electrical Drafter <input type="radio"/> Electrical Engineer Technician/ Technologists * <input type="radio"/> Civil Engineer Technician * <input type="radio"/> Nuclear Engineer Technician <input type="radio"/> Range \$xxx,xxx-xxx,xxx	Lineworker/Service Technician * <input type="radio"/> Mapping Technician/ GIS Technician * <input type="radio"/> Electrical Technician * <input type="radio"/> Gas Technician * <input type="radio"/> Systems Control Operator <input type="radio"/> Facilities Manager * <input type="radio"/> Range \$xxx,xxx-xxx,xxx
Bachelor Degree and beyond	Civil Engineers * <input type="radio"/> Electrical Engineer * <input type="radio"/> Wind Energy Engineer * <input type="radio"/> Petroleum Engineer <input type="radio"/> Solar Engineer * <input type="radio"/> Sustainability Specialist <input type="radio"/> Range \$xxx,xxx-xxx,xxx	Specialist/Supervisor * <input type="radio"/> Data Scientist * <input type="radio"/> Cybersecurity * <input type="radio"/> Information Security Analyst * <input type="radio"/> Range \$xxx,xxx-xxx,xxx
Postsecondary Options	Click HERE for Postsecondary Options	Click HERE for Postsecondary Options

* **BRIGHT OUTLOOK** = these jobs are expected to grow in the future – which means more opportunities for you!

XELLO = you can learn more and save this job in your Xello account (note: some job titles might look a little different in Xello)



Energy Career Pathway In High School



A K12 career pathway must include:

- A sequence of courses (including at least 2 CTE courses)
- Two of the following components: Career and Technical Student Organization, Work-based Learning, Industry Recognized Credential, College Credit Opportunity

• CAREER EXPLORATION PROGRAMS

Statewide:

- [WI K12 Energy Education Program \(KEEP\)](#)
- [WI Energy Workforce Consortium](#)
- [Get into Energy/Get into STEM](#)
- [Clean Jobs](#)
- [Green Buildings - career map](#)
- [Hydrogen/Fuel Cell - career map](#)
- [Bioenergy - career wheel](#)
- [Solar - career map](#)
- [Wind - career map](#)
- [Clean Energy Careers Videos](#)

Career and Technical Education Courses

Must include a sequence of at least TWO Career and Technical Education courses. Should align with Education Building Blocks for the pathway.

-
-

Additional Employer Recommended Courses

Should align with Education Building Blocks for this pathway.

- [SEI RE100 \(Intro to RE\)](#)
- [SEI RE101 \(Fundamental Math for Solar\)](#)
-
-

Career and Technical Student Organization

- [WI SkillsUSA](#)
- [WIFFA](#)

Work-Based Learning Program Options

- [Employability Skills](#) (90 hrs)
- [Youth Apprenticeship- Architecture & Construction](#) (Electrical focus) (450 hrs/year; 1-2 years)
- [Youth Apprenticeship- STEM](#) (Electrical Engineering focus) (450 hrs/year; 1-2 years)
- Local Work-based Learning Programs that meet [state quality requirements](#)

Energy Generation & Conservation

Energy, Transmission, Distribution, & Storage

Industry Recognized Credential Options

Learn the skills that employers want to see!

Italics = must be 18 years old to obtain

[*This certification is eligible for reimbursement through the technical incentive grant](#)

- [First Aid: CPR/AED](#)
- [OSHA 10](#)
- [WorkKeys/National Career Readiness Certificate](#)
- [CEWD Energy Industry Fundamentals Certificate \(EIF\)](#)

- [*LEED Green - Associate level](#)
- [NABCEP](#) (NWTC Assoc PVA program qualifies students to take exam)

- [*CDL](#)
- [*National Institute for Metalworking Skills \(NIMS\)](#)
 - [Machining Level I- Measurement, Materials & Safety; Machining Level I- Job Planning, Benchwork & Layout](#)
- [Refrigeration License - EPA 608](#)
- [FAA Drone Operator](#)

College Credit Opportunities

You can find the list of college credit opportunities included in the postsecondary options for this pathway [HERE](#).