



# Energy Career Pathway

## <Name of Region>

### 2023-2025

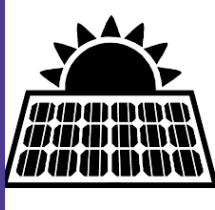


**EXPLORE:** Click on the links to find the job titles that seem most interesting to you to learn more! Save any jobs you are interested in from this career pathway in your XELLO account so that you can create an Academic and Career Plan (ACP) later on.

<b>Educational Level</b> May also require work experience	<b>Energy Generation &amp; Conservation</b>	<b>Energy Transmission, Distribution &amp; Storage</b>
High School Diploma, Certification	<a href="#">Solar PV Installer</a> * <input type="radio"/> <a href="#">Electrical &amp; Gas Power Line Helper</a> * <input type="radio"/> <a href="#">Utility Locator</a> * <a href="#">Vegetation Management</a> <a href="#">Customer Service Rep</a> * <input type="radio"/> Range \$xxx,xxx-xxx,xxx	
Certification or Technical Diploma	<a href="#">Distribution Generation Operator</a> <input type="radio"/> <a href="#">Solar/Wind Energy Technician</a> * <input type="radio"/> <a href="#">Building Automation Technician</a> * <a href="#">Energy Auditor</a> <input type="radio"/> <a href="#">Residential HVAC Technician</a> * <input type="radio"/> Range \$xxx,xxx-xxx,xxx	<a href="#">Lineworker</a> * <input type="radio"/> <a href="#">Service &amp; Metering Technician</a> * <a href="#">Power Distributor &amp; Dispatcher</a> * <a href="#">Utility Technician</a> * Range \$xxx,xxx-xxx,xxx
Registered Apprenticeship	<a href="#">Substation Electrician</a> * <a href="#">Apprentice Plant Attendant</a> *  Range \$xxx,xxx-xxx,xxx	<a href="#">Lineworker</a> * <input type="radio"/> <a href="#">Metering Technician</a> * <a href="#">Electrical Apprentice</a> * <input type="radio"/> Range \$xxx,xxx-xxx,xxx
Associate Degree	<a href="#">Substation Technician Electrician</a> * <input type="radio"/> <a href="#">Electrical Drafter</a> <input type="radio"/> <a href="#">Electrical Engineer Technician/ Technologists</a> * <input type="radio"/> <a href="#">Civil Engineer Technician</a> * <a href="#">Nuclear Engineer Technician</a>  Range \$xxx,xxx-xxx,xxx	<a href="#">Lineworker/Service Technician</a> * <input type="radio"/> <a href="#">Mapping Technician/ GIS Technician</a> * <input type="radio"/> <a href="#">Electrical Technician</a> * <input type="radio"/> <a href="#">Gas Technician</a> * <a href="#">Systems Control Operator</a> <a href="#">Facilities Manager</a> * Range \$xxx,xxx-xxx,xxx
Bachelor Degree and beyond	<a href="#">Civil Engineers</a> * <input type="radio"/> <a href="#">Electrical Engineer</a> * <input type="radio"/> <a href="#">Wind Energy Engineer</a> * <a href="#">Petroleum Engineer</a> <a href="#">Solar Engineer</a> * <a href="#">Sustainability Specialist</a> <input type="radio"/> Range \$xxx,xxx-xxx,xxx	<a href="#">Specialist/Supervisor</a> * <a href="#">Data Scientist</a> * <a href="#">Cybersecurity</a> * <a href="#">Information Security Analyst</a> * <input type="radio"/>  Range \$xxx,xxx-xxx,xxx
Postsecondary Options	Click <a href="#">HERE</a> for Postsecondary Options	Click <a href="#">HERE</a> for Postsecondary Options

\* **BRIGHT OUTLOOK** = these jobs are expected to grow in the future – which means more opportunities for you!

**XELLO** = you can learn more and save this job in your Xello account (note: some job titles might look a little different in Xello)



# Energy Career Pathway In High School



## A K12 career pathway must include:

- A sequence of courses (including at least 2 CTE courses)
- Two of the following components: *Career and Technical Student Organization, Work-based Learning, Industry Recognized Credential, College Credit Opportunity*

### Career and Technical Education Courses

Must include a sequence of at least TWO Career and Technical Education courses. Should align with the CTE standards for the pathway.

- 
- 

- **CAREER EXPLORATION PROGRAMS**

### Additional Employer Recommended Courses

Should align with appropriate standards for this pathway.

- [SEI RE100 \(Intro to RE\)](#)
- [SEI RE101 \(Fundamental Math for Solar\)](#)
- 
- 

State:

- [WI K12 Energy Education Program \(KEEP\)](#)
- [WI Energy Workforce Consortium](#)
- [Get into Energy/Get into STEM\)](#)
- [Clean Jobs](#)
- [Green Buildings - career map](#)
- [Hydrogen/Fuel Cell - career map](#)
- [Bioenergy - career wheel](#)
- [Solar - career map](#)
- [Wind - career map](#)
- [Clean Energy Careers Videos](#)

Regional:

Local:

### Career and Technical Student Organization

- [WI SkillsUSA](#)
- [WI FFA](#)

### Work-Based Learning Program Options

- [Employability Skills](#) (90 hrs)
- [Youth Apprenticeship- Architecture & Construction](#) (*Electrical focus*) (450 hrs/year; 1-2 years)
- [Youth Apprenticeship- STEM](#) (*Electrical Engineering focus*) (450 hrs/year; 1-2 years)
- Local Work-based Learning Programs that meet [state quality requirements](#)

### Industry Recognized Credential Options

Learn the skills that employers want to see!

*Italics = must be 18 years old to obtain*

[\\*This certification is eligible for reimbursement through the technical incentive grant](#)

### Energy Generation & Conservation

[First Aid; CPR/AED](#)   [OSHA 10](#)   [WorkKeys/National Career Readiness Certificate](#)

### Energy, Transmission, Distribution, & Storage

[CEWD Energy Industry Fundamentals Certificate \(EIF\)](#)

- [\\*LEED Green - Associate level](#)
- [NABCEP](#) (NWTC Assoc PVA program qualifies students to take exam)

- [\\*CDL](#)
- [\\*National Institute for Metalworking Skills \(NIMS\)](#)
  - [Machining Level I- Measurement, Materials & Safety; Machining Level I- Job Planning, Benchwork & Layout](#)
- [Refrigeration License](#) - EPA 608
- [FAA Drone Operator](#)

### College Credit Opportunities

You can find the list of college credit opportunities included in the postsecondary options for this pathway [HERE](#).



# Energy Career Pathway

At (Name of School)

Your Academic and Career Plan (ACP) for this career pathway starts here.

Use this page to determine which classes and activities you will take to prepare for this career pathway. Record your plan in XELLO.



**Career and Technical Education Courses**

Must include a sequence of at least TWO Career and Technical Education courses. Should align with CTE standards for the pathway.

- CTE Course #1
- CTE Course #2
- CTE Course #3

**CAREER EXPLORATION PROGRAMS**

**Additional Employer Recommended Courses**

Should align with CTE standards for this pathway.

- Course #1
- Course #2

State:

- 

Regional:

- 

Local:

- 

**Career and Technical Student Organization**

Name of CTSO

**Work-Based Learning Program Options**

- WBL Option #1
- WBL Option #2

**Industry Recognized Credential Options**  
Learn the skills that employers want to see!

*Italics = must be 18 years old to obtain*

[\\*This certification is eligible for reimbursement through the technical incentive grant](#)

**Energy Generation & Conservation**

**Energy, Transmission, Distribution, & Storage**

- IRC Name/link #1
- IRC Name/link #2

- IRC Name/link #1
- IRC Name/link #2

- IRC Name/link #1
- IRC Name/link #2

**College Credit Opportunities**

You can find the list of college credit opportunities included in the postsecondary options for this pathway [HERE](#).

**College Courses Offered at Your High School**

**Transcribed Credit**

- Name of HS Course #1, IHE granting credit
- Name of HS Course #2, IHE granting credit

**AP and/or IB Courses**

Name of AP/IB Course #1                      Name of AP/IB Course #2  
- Score, College, Course                      - Score, College, Course

**College Courses You Can Take at a College Campus**

Application Deadlines:

October 1st: Spring Courses      February 1st: Summer Courses (ECCP only)      March 1st: Fall Courses

**Start College Now**

- Name of College #1, College Course #1
- Name of College #1, College Course #2

**Early College Credit Program**

- Name of College #1, College Course #1
- Name of College #1, College Course #2
- Name of College #2, College Course #1
- Name of College #2, College Course #2