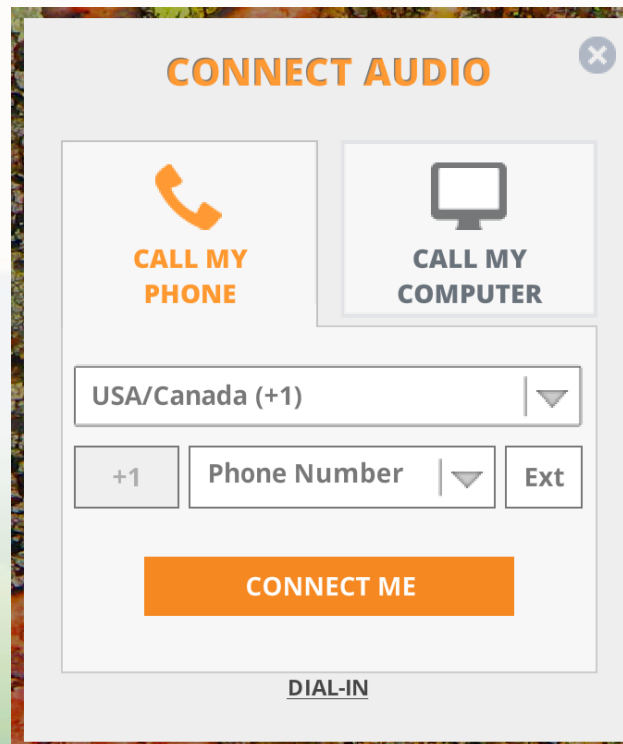


- You are welcome to print a copy of the power point prior to today's presentation from our webpage at
- <http://dpi.wi.gov/school-nutrition/training/whats-new>
- If you will be using a phone connection and either a laptop or PC computer with a speaker and/or microphone, make sure the **computer speaker and microphone in the toolbar are turned off**. If they aren't, you will hear feedback.
- If you are calling via telephone, please mute your line by pressing “\*6”



The screenshot shows a window titled "CONNECT AUDIO" with a close button (X) in the top right corner. Inside the window, there are two main options: "CALL MY PHONE" with a telephone handset icon, and "CALL MY COMPUTER" with a computer monitor icon. Below these options is a dropdown menu currently set to "USA/Canada (+1)". Underneath the dropdown is a text input field for a phone number, with a "+1" button to its left and an "Ext" button to its right. At the bottom of the window is a large orange button labeled "CONNECT ME". Below the window, the text "DIAL-IN" is visible.

If you don't hear any audio, perhaps you too quickly closed this window without selecting an option.

# What's New With School Nutrition

## January 2017



# Agenda

## 1. Updates and Memos

SNT Staff Update

USDA Memos

## 2. SNT Communication

VCR Reminder

PLE Tool

## 3. Training and Miscellaneous

WI Schools Meals Rock!

2017 Student Chef Competition

ServSafe

# SNT Staff Update

Vic Taugher is retiring.

# USDA Memo

**SP 10-2017: Meal Service Requirements in the Summer Meal Programs, with Q&As.**

# USDA Memo

**SP 11-2017: Paid Lunch Equity: School Year 2017-18 Calculations and Tool**

# USDA Memo

**SP 15-2017: Flexibility for the Target 2 Sodium Requirements for School Year 2017-2018**

# Program Reminder

- Verification Collection Report is due February 1
- Webcast on Submitting:  
<https://media.dpi.wi.gov/school-nutrition/submitting-the-verification-collection-report/story.html>
- When you are ready to Submit:  
<http://dpi.wi.gov/school-nutrition/national-school-lunch-program/verification>



# Onsite Monitoring

- Each SFA with more than one serving site needs to review the NSLP counting and claiming system in use in each school by February 1 of each year.
- **New!** Beginning in SY 2016-17, on-site monitoring is now also required for the School Breakfast Program (SBP). A minimum of 50% of schools participating in the SBP must be monitored annually by February 1, with each school operating the SBP being monitored at least once every two years.

# PLE Tool

# WI School Meals Rock! Student Video Contest

Congratulations to the following schools!

*Winner:* Hartford Union High School

*Runner-up:* Prairie View Elementary, Holmen

*Honorable Mention*

- Dodgeland Elementary School
- Fond du Lac High School
- Queen of the Apostles School, Tomah

<http://dpi.wi.gov/wisconsin-school-meals-rock/students>

# 2017 Student Chef Competition

- Announcing the fifth annual Whipping Up Wellness, Wisconsin Student Chef Competition
- Student teams compete to develop a nutritious recipe, student friendly recipe.
  - Must incorporate one bean/pea (legume) ingredient
- Top five teams are invited to a cook-off.
- Recipe entries are due March 10, 2017.

<http://dpi.wi.gov/team-nutrition/whipping-up-wellness>

# ServSafe Course and Exam Offerings

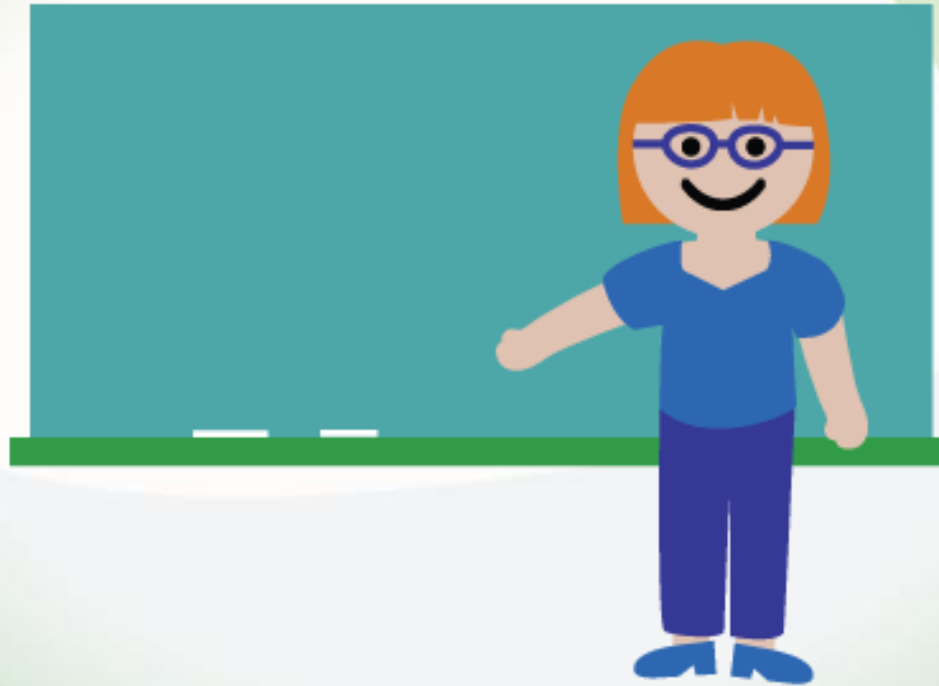


Monday, 1/23  
Weston, WI

Tuesday, 2/21  
Milwaukee,  
WI  
*SPANISH!*

Monday, 2/27  
McFarland,  
WI

# Questions?



# Thanks for Participating

- Next *What's New with School Nutrition*  
– Tuesday, February 14<sup>th</sup> at 2:00pm



# Non Discrimination Statement

In accordance with Federal civil rights law and U.S. Department of Agriculture (USDA) civil rights regulations and policies, the USDA, its Agencies, offices, and employees, and institutions participating in or administering USDA programs are prohibited from discriminating based on race, color, national origin, sex, disability, age, or reprisal or retaliation for prior civil rights activity in any program or activity conducted or funded by USDA.

Persons with disabilities who require alternative means of communication for program information (e.g. Braille, large print, audiotape, American Sign Language, etc.), should contact the Agency (State or local) where they applied for benefits. Individuals who are deaf, hard of hearing or have speech disabilities may contact USDA through the Federal Relay Service at (800) 877-8339. Additionally, program information may be made available in languages other than English.

To file a program complaint of discrimination, complete the [USDA Program Discrimination Complaint Form](#), (AD-3027) found online at: [http://www.ascr.usda.gov/complaint\\_filing\\_cust.html](http://www.ascr.usda.gov/complaint_filing_cust.html), and at any USDA office, or write a letter addressed to USDA and provide in the letter all of the information requested in the form. To request a copy of the complaint form, call (866) 632-9992. Submit your completed form or letter to USDA by:

- (1) mail: U.S. Department of Agriculture  
Office of the Assistant Secretary for Civil Rights  
1400 Independence Avenue, SW  
Washington, D.C. 20250-9410;
- (2) fax: (202) 690-7442; or
- (3) email: [program.intake@usda.gov](mailto:program.intake@usda.gov).

This institution is an equal opportunity provider.