

Dear School District Boundary Appeal Board,

We would like to submit a petition to alter school district boundaries for the lot we recently built on and moved to. We have 4 children, ages 4k-Freshman, that are all currently enrolled in the Oostburg School District. The 3 younger children in grades 4k, 1st, & 7th are attending Oostburg Christian and the Freshman is at Oostburg High School.

In December 2019 we finished building a home on property that adjoined with the home we lived on. The new home was built directly across the road from the home we moved out of. Our move across the road transferred us out of the Oostburg School District and into the Cedar Grove/Belgium District. I have included in this petition packet a map showing how our lot is cut in half between the two districts. This has caused school transportation difficulties for our family, especially when considering the two separate schools they now attend within the Oostburg district which have differing starting and dismissal times.

When we built our home, we were aware that our adjoining property had a different parcel number and school district than our current lot. We decided to move forward with our decision to build based on the following information:

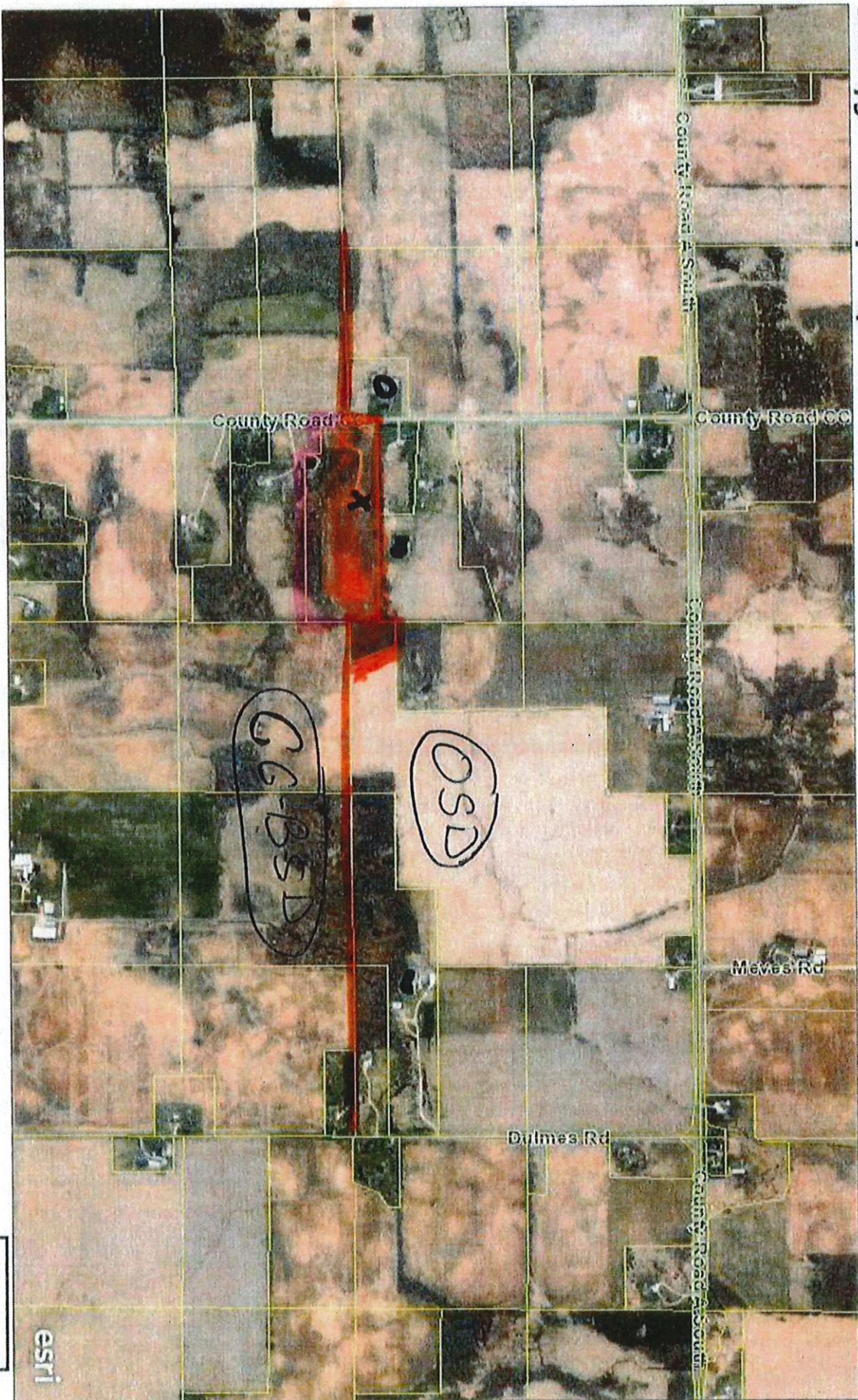
- We understood that a district change would be granted after an appeal was sent.
- We are aware of a district alteration from the Sheboygan Falls District to the Oostburg District in a very similar scenario in the recent past. We assumed ours would also be granted like our child's classmate.
- Our children attend Oostburg Schools & tax dollars should go to the district our children attend.
- If the district line were made straight, our new home would be on the Oostburg side.
- This is new construction, so the Cedar Grove District would not lose financial support with the change. District tax dollars prior to our new home construction were minuscule as this was previously zoned differently.
- Our neighbors across the road to the West and North are both in the Oostburg District.

We would like to petition to detach our property from the Cedar Grove district and attach it to the Oostburg district. This will alleviate school transportation difficulties for our family over the next 13 years if we could have your help with this issue.

We appreciate your consideration.

Jason & Amanda Eiring
N1891 Cty Rd CC
Cedar Grove, WI 53013
920-564-5015
amandadolfin@gmail.com

Sheboygan County IMap



Esri, Inc., City of Naperville, Illinois | Esri Community Maps Contributors, Esri, HERE, Garmin, Safegraph, INCREMENT P, METI/NASA, USGS, EPA, NPS, US Census Bureau, USDA

- X - CURRENT HOME**
- O - PREVIOUS HOME**
- CURRENT DISTRICT BOUNDARY**
- PROPOSED DISTRICT BOUNDARY**