

Supporting Neurodiverse Students Professional Learning System: Who, What, When, Where and Why

Presenters: Jess Nichols and Katie Berg
Date: October 10, 2018
Leadership Conference



Supporting Neurodiverse Students

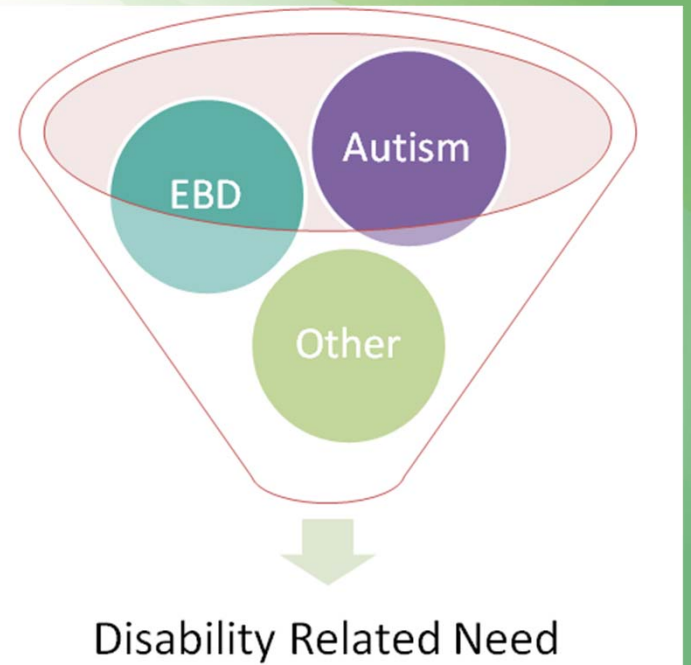
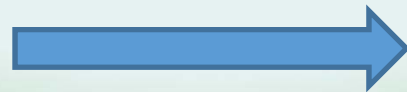
PROFESSIONAL
LEARNING SYSTEM



Who Are Neurodiverse Students?



<https://neurodiversitysymposium.wordpress.com/what-is-neurodiversity/>



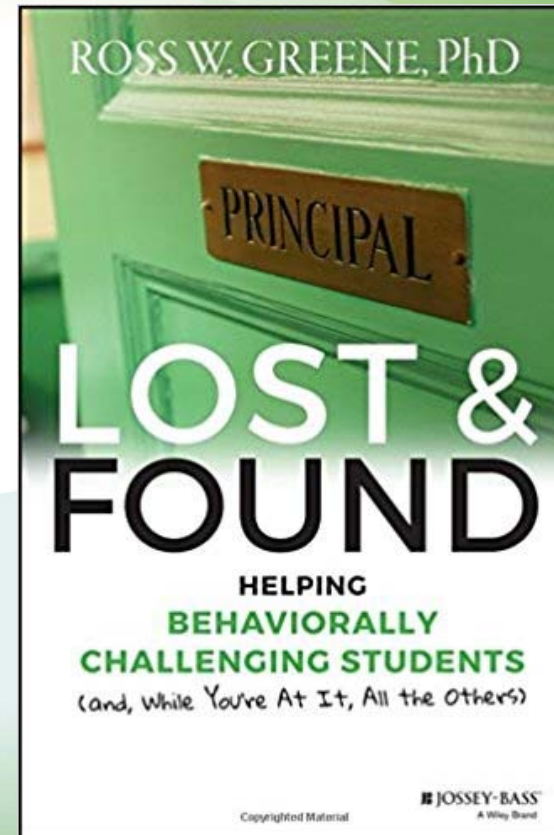
Who Benefits From this Professional Learning System?

- Educators
- Paraprofessionals
- Related Service Providers
- Parents
- Community Partners



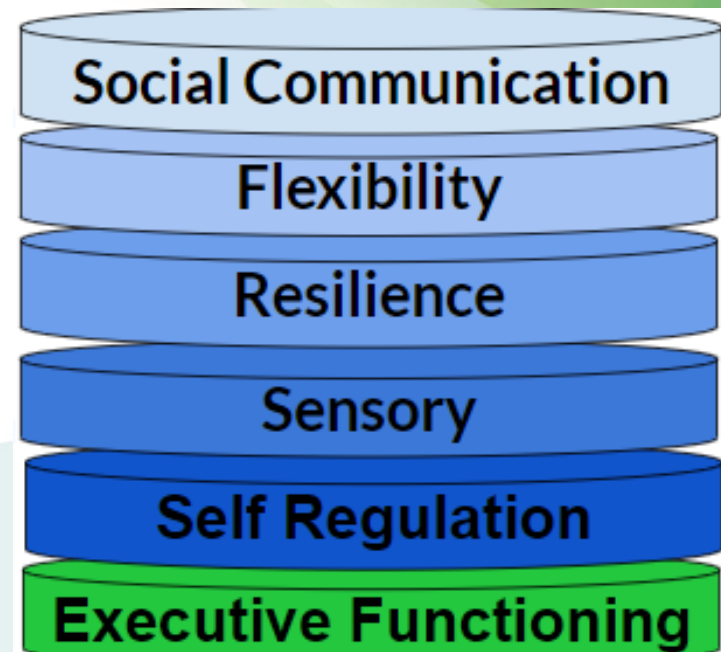
What Elements Comprise this Professional Learning System?

- Training Workshops
- Book Club
- Web based Professional Learning Network (PLN)
- Needs Assessment
- Toolkit



In Person Training Workshops

- Two Day Training
- Sensory and Self-Regulation
- Flexibility and Resilience
- Social Communication



Through-Lines

- **Universal Design for Learning**
- **Inclusive Practices**
- **Self-Determination and Self-Advocacy**
- **CCR IEP Five Step Process**
- **CCR IEP Five Beliefs**



When and Where Are They Happening?

Two Day Training Workshop

- October 23-24 CESA 9
- November 28-29 CESA 2
- January 8-9 CESA 10
- March 26-27 CESA 6

Social Communication

- December 10 CESA 4
- January 19 CESA 10
- February 25 CESA 1
- March 5 CESA 7

Flexibility and Resilience

- October 25 CESA 9
- December 6 CESA 3
- January 15 CESA 12
- March 28 CESA 6

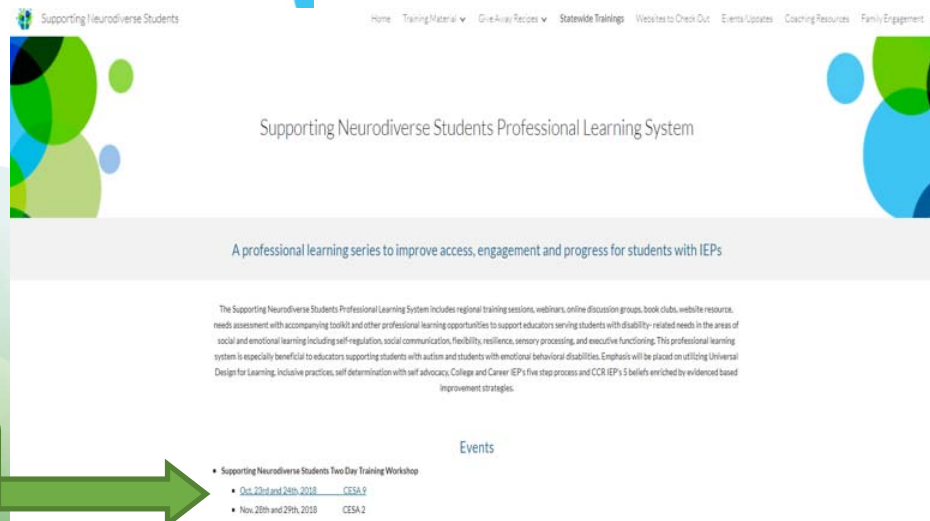
Sensory and Self-Regulation

- November 20 CESA 2
- February 13 CESA 11
- February 15 CESA 8
- March 20 CESA 5

How Do I Register?

One Stop Information Hub

<https://tinyurl.com/neurodiversitywi>



Registration Links

- Supporting Neurodiverse Students Two Day Training Workshop
- Oct. 23rd and 24th, 2018 CESA 5
- Nov. 20th and 21st, 2018 CESA 2

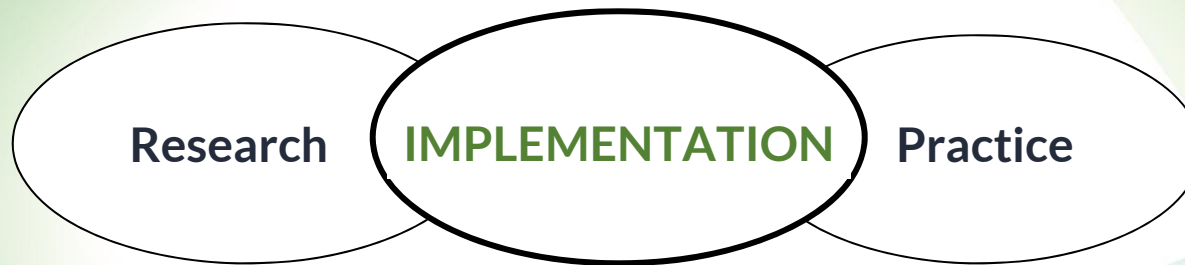
Why This New Professional Learning System?

- **2 Day Autism Trainings**
- **Expert Trainers**
- **Variety of Topics**



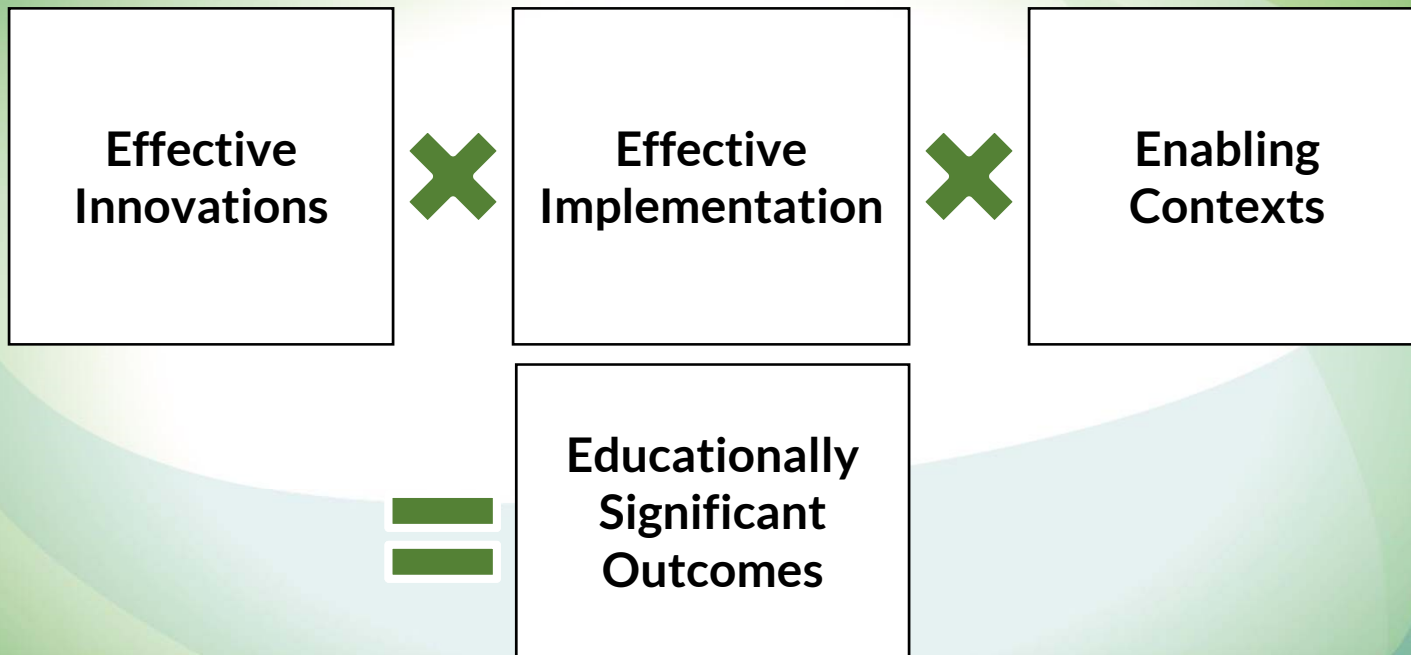
Research to Practice Gap

Between the saying and the doing there is a sea...

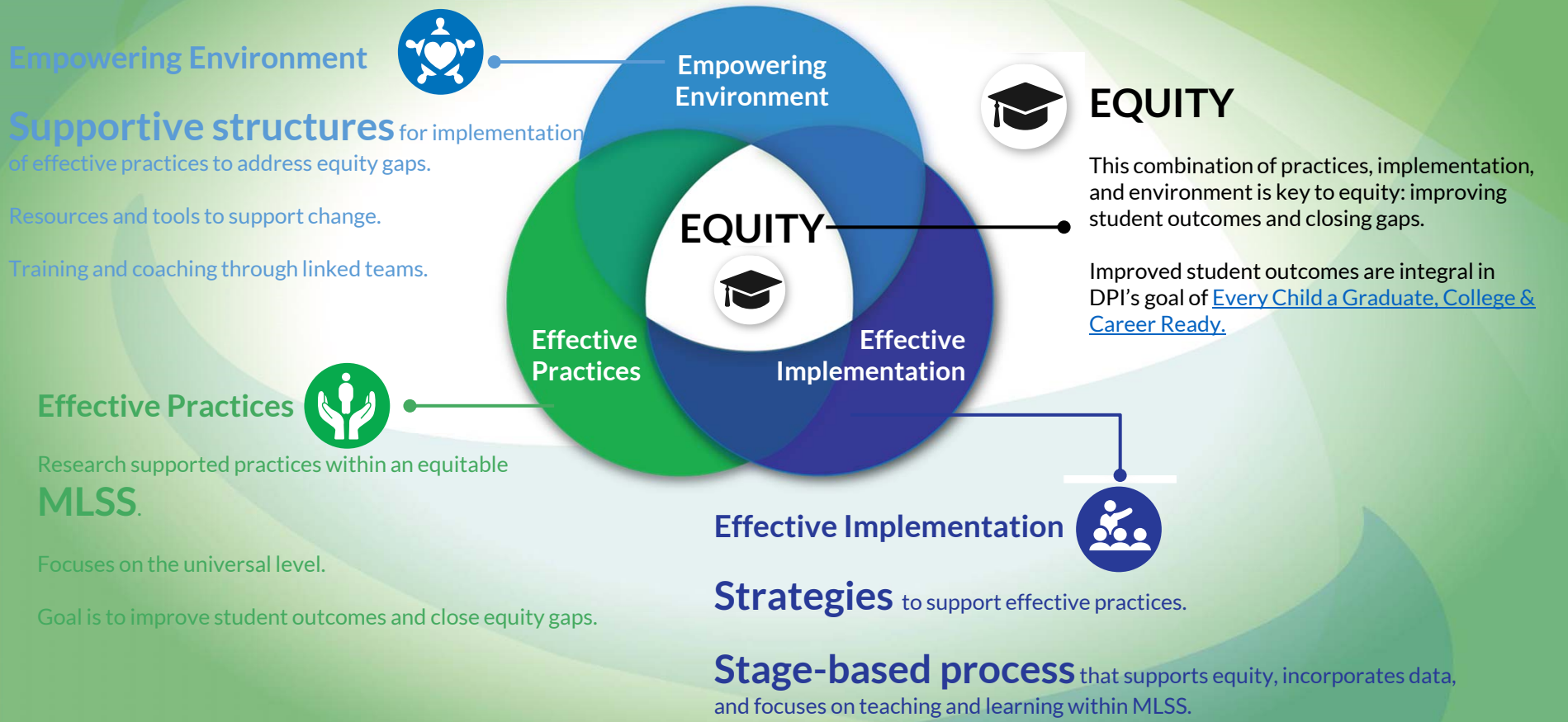


Teachers cannot use practices effectively without on-going support and many students do not benefit from quality instruction they do not receive

Formula for Success



Wisconsin's Approach to Continuous Improvement



ES3 Grant

- Four LEAs SY2018-19
- Three Year Grant
- Three Year Cohorts
- Coaching System
- Inclusive Practice
- Increasing Access, Engagement and Progress
- Evidence Informed Improvement Practices

Enhancing Sensory, Social and Emotional, and Self-Regulation Strategies in Students with IEPs

Contacts

Katie Berg
Statewide Trainer
kberg@cesa1.k12.wi.us

Jessica Nichols
Grant Director
Jessica.Nichols@dpi.wi.gov