

Weekly Updates

Not receiving the division weekly updates?



Email sherri.honaker@dpi.wi.gov or DPILearningSupport@dpi.wi.gov.

Lunch Keynote

Please make sure to be back in your seats by 12:15 p.m. so our keynote with Rebecka Peterson can begin on time with limited disruptions.

Thank you!

BHSS Conference Announcement



Building the Heart of Successful Schools



December 5, 2024
Pre-Conferences December 4

www.wishschools.org



Wisconsin Educational Services Program for the Deaf and Hard of Hearing (WESP-DHH)



WESP-DHH
**Wisconsin School
for the Deaf**
Est. 1852



WESP-DHH
**Wisconsin Deafblind
Technical Assistance Project**
WDBTAP



WESP-DHH
Outreach
Deaf · Hard of Hearing · Deafblind



WCBVI



Wisconsin Department of
Public Instruction

DPI Division for Learning
Support (DLS)

Wisconsin Center for the Blind
and Visually Impaired (WCBVI)

WCBVI
Outreach Services

WCBVI Accessible
Educational Materials
Center (AEM)

Wisconsin School for
the Blind and Visually
Impaired (WSBVI)

Nita M. Lowey 21st Century Community Learning Center Grant

Title IV Part B of Elementary and Secondary Education Act (ESEA):

- Academic Enrichment
- Expand Access to Opportunities
- Engage Adult Family Members

[Wisconsin's Nita M. Lowey 21st CCLC Website](#)

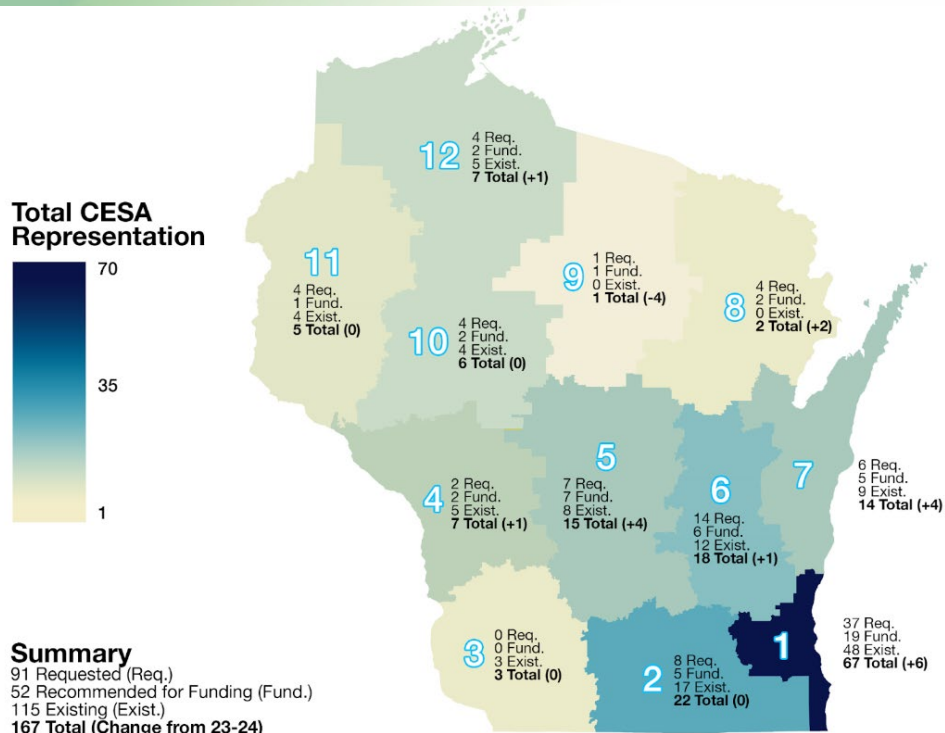
[US Department of Education 21st CCLC Website](#)

[2021-22 21st CCLC Annual Report \(most recent data available\)](#)



21st CCLC Sites

2023-24 Competition Summary



- 168 sites in Wisconsin for 2024-25 grant year
- Over 14,000 elementary, middle, and high school students served statewide (2021-2022)
- \$18 million + in grant awards

Lunch Keynote

Please make sure to be back in your seats by 12:15 p.m. so our keynote with Rebecka Peterson can begin on time with limited disruptions.

Thank you!

WCBVI Outreach Services

Who we serve

- Any student in the state of Wisconsin who is blind or visually impaired, aged 3 to 21, their families, Wisconsin Vision Professionals, LEAs and other Wisconsin stakeholders
- LEAs as they register students for the [APH Federal Quota](#)



How

- [Professional development](#)
- [Family Support](#)
- [AEM, Library and Assistive Technology Loans](#)
- [Mentoring for TVIs & O&Ms](#)
- [Outreach Service Requests](#)
- [Short Courses & Student Programs](#)

Wisconsin School for the Blind and Visually Impaired (WSBVI)

How to enroll a student:

- School visit/consultation with WSBVI IEP Coordinator
maria.schoville@wcbvi.k12.wi.us
- IEP teams decide placement
- 45-day trial with assessments (Core & Expanded Core Curriculum ECC)
- Robust Residential Life Programming
- Janesville, WI



Costs to LEA:

- Transportation

Funding:

- Federal (IDEA) for instruction
- State (GPR) for facilities

WESP-DHH: Who We Serve



WESP - DHH
WISCONSIN
School for the Deaf
Est. 1852



WESP-DHH
Wisconsin Deafblind
Technical Assistance Project
WDBTAP



WESP-DHH
Outreach
Deaf · Hard of Hearing · Deafblind

Pre-K to 12+ school, only for
D/HH/DB students
STATEWIDE Bilingual-
Bicultural Education

DeafBlind students
ages 0-21 within
school districts
STATEWIDE, at WSD,
and at WCBVI.

Non-LEA
professionals in WI
who work with
D/HH/DB
students

WI Local
Educational
Agencies & their
staff

Families in
WI with
D/HH/DB
children

D/HH/DB
students within
school districts
STATEWIDE

Supporting Deaf, Hard of Hearing, and
Deafblind students ages **3-21** in Wisconsin

Lunch Keynote

Please make sure to be back in your seats by 12:15 p.m. so our keynote with Rebecka Peterson can begin on time with limited disruptions.

Thank you!

Wisconsin School for the Deaf (WSD)



Academics,
Athletics &
Residential Life

- Elementary
- Middle
- High School
- Transition



<http://wesp-dhh.wi.gov/wsd>

Meaningful Inclusion in Early Childhood

DPI Early Childhood Video



Comprehensive School Mental Health Funding

Selecting High Leverage Activities:

1. Provide training and implementation support to school staff in universal mental health promotion topics
2. Universal Mental Health Screening
3. Developing a School Mental Health Referral Pathway
4. Comprehensive School Mental Health System Planning
5. Implementing evidence-based mental health programs
6. Completing a needs assessment
7. Engaging in resource mapping



Use this link for more information on selecting [High Leverage Activities](#).

Referral Pathways Guidance

Mental Health referral pathways are the procedures and policies that a school has in place to help identify and connect students to needed mental health resources, both in the school and in the community. The [guidance document](#) includes a checklist to guide the creation and implementation of a referral pathway and other helpful forms that can be adapted to fit the local context.

[School Mental Health Referral Pathways Guide](#)



The Educational Equity Network



The Network provides free professional learning opportunities that support educators in building their capacity to address racial disproportionality in special education.

www.TheNetworkWI.com



goodreads

ASL and Spanish Interpreters are available at all Institutes

Lunch Keynote

Please make sure to be back in your seats by 12:15 p.m. so our keynote with Rebecka Peterson can begin on time with limited disruptions.

Thank you!

Youth Risk Behavior Survey (YRBS) Information

2023 YRBS Reports

Statewide data and reports: Available at <https://dpi.wi.gov/sspw/yrbs>

Based on random sampling 50 Wisconsin high schools (grades 9-12)
42 schools and 1,882 students participated

County, district, and school data: Information about accessing reports is available at <https://dpi.wi.gov/sspw/yrbs/online>

Based on schools and districts who chose to participate (grades 6-12)
728 schools and 201,436 students participated

Survey data: High school reports available in SAFE, middle school reports are being developed

2025 YRBS Survey

Survey administration will take place between January 6 to June 13

Registration information will be available on our website later this fall

To stay up-to-date on YRBS information, please subscribe to the YRBS email distribution list. Information about subscribing and reports from previous years are available at <https://dpi.wi.gov/sspw/yrbs>.

WCBVI

Accessible Educational Materials (AEM)

- What is AEM? DPI 20.02 Bulletin
 - CESA 2 WI AEM Center
 - WCBVI Outreach AEM Center
- Braille, Large Print (LP), audio, and alternative textbook research
 - WCBVI Book Request Process Flow Chart
 - Statewide Library and WCBVI Media Center Loan
 - WCBVI Textbook Research Request Form
- Loan APH Consumables, Equipment & AT
 - WCBVI APH Consumable and Loan Request Form
 - Loan WCBVI Assistive Technology



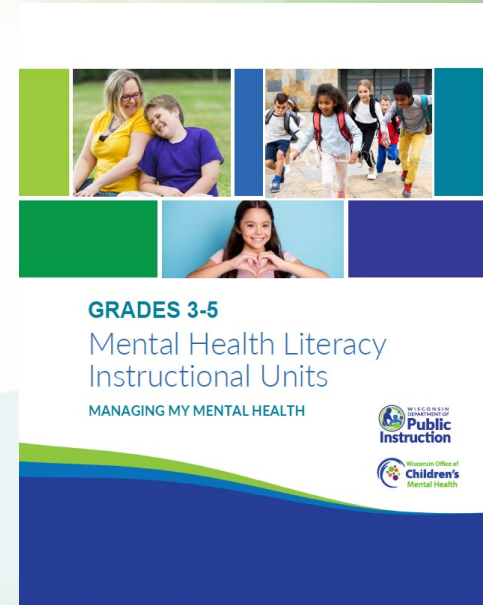
Sample Special Education Forms



The sample special education forms have translation in Spanish and in Hmong and available at [Sample Special Education Forms.](#)

Mental Health Literacy Units of Instruction

- Units for grades K4-K5, 1-2, 3-5, 6-8, and 9-12.
- Includes caregiver engagement materials.
- Aligned [WI SEL Competencies](#), Learning for Justice's [Social Justice Standards](#), and utilizing a [skills-based health approach](#).
- Free to download at: [Mental Health Literacy and Wellness Education website](#).



Wisconsin Wayfinder



Wisconsin Wayfinder

Children's Resource Network

dhs.wi.gov/wiscway | (877) WiscWay

Lunch Keynote

Please make sure to be back in your seats by 12:15 p.m. so our keynote with Rebecka Peterson can begin on time with limited disruptions.

Thank you!

Mental/Behavioral Health Screening

All screening should be...

Appropriate	Technically Adequate	Useful	Feasible	Beneficial
<ul style="list-style-type: none">--Fit to context--Fix to need	<ul style="list-style-type: none">--Valid--Reliable--Diagnostic Accuracy	<ul style="list-style-type: none">--Generates new & useable info--Supplements existing data	<ul style="list-style-type: none">--Easily implemented--Referral pathway defined	<ul style="list-style-type: none">--Does no harm--Equitable--Culturally Responsive

Find more information on [Mental/Behavioral Health Screening](#).
Find more information about [Behavioral Health Screening Tools](#).

CCR IEP Learning Resources

[Home](#) | [Families & Students](#) | [Schools & Educators](#) | [Libraries](#) | [Data & Media](#)



Special Education

[Special Education Index](#)

[What's New](#)

[Information for Educators](#) ▾

[Information for Families](#) ▾

[Results Driven Accountability](#) ▾

[College and Career Ready IEPs](#) ▾

[Special Education Program Areas](#) ▾

[Early Childhood Special Education](#) ▾

CCR IEP LEARNING RESOURCES

CCR IEP Learning Resources

Explore in-depth information and resources about CCR IEPs.

Upcoming Learning Opportunities

Regional CCR IEP Training Calendar coming soon!

[Introductory Resources and Full Day Trainings](#)

[5 Beliefs](#)

[High Expectations](#)

Culturally

[5 Step Process](#)

[Step 1 - Understand Achievement](#)

[Digging Deeper: Special Topics](#)

Coming Soon!

[Wisconsin DPI CCR IEP Webpage](#)

College and Career Ready IEP Trainings

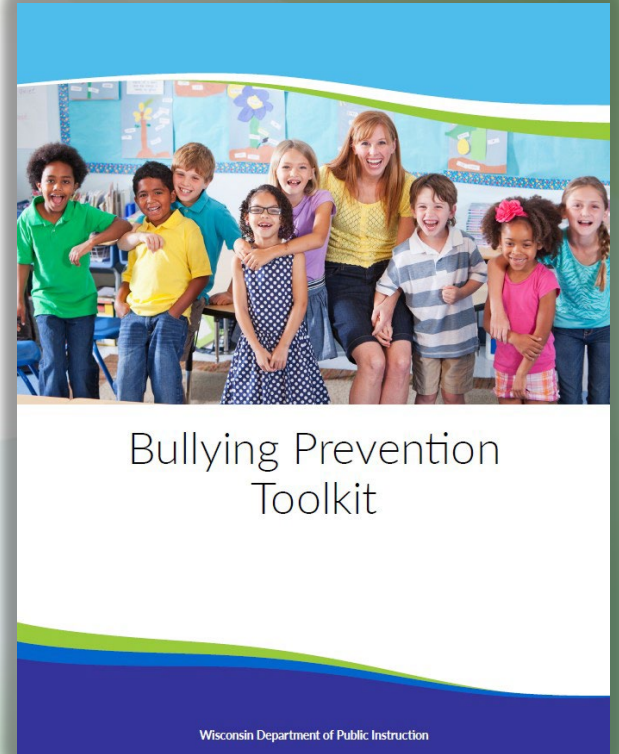
CCR IEP Training and Support is available through the CESA [Regional Special Education Network \(RSN\)](#). Each CESA Regional Special Education Network (RSN) will provide an introductory CCR IEP training during the school year. To register or find out more information, visit the [Statewide CCR IEP Introductory Training Opportunities Flyer](#) to register or for more information, or contact your local Regional Special Education Network (RSN) Director. In addition, free DPI web trainings on CCR IEP have been recorded and posted to each step of the [CCR IEP Five Step Process web page](#).

DPI Bullying Prevention Toolkit

Bullying Prevention & Response Guidance and Resources:

- Define Bullying & Establish Foundational Understandings
- Establish a Bullying Prevention Task Force
- Reporting Procedure & Tools
- Investigation Procedure & Tools
- Decision Making
- Caregiver Communication

Access the toolkit here: [A Comprehensive Approach to Bullying](#)



Lunch Keynote

Please make sure to be back in your seats by 12:15 p.m. so our keynote with Rebecka Peterson can begin on time with limited disruptions.

Thank you!

Coaching Resources Available!

- **Meet** other coaches across the state
- **Learn** about tools, supports and resources
- **Stay** connected with the coaching newsletter
- **Align** your evaluation tools to coaching



Scan the code to visit the website:
<https://dpi.wi.gov/coaching>

School Based Mental Health Professionals Grant Project

**U.S. Department of Education Grant
10 million for five years through
September 30,2025**

Project Goals

- ✓ Increase the recruitment, retention and diversity of pupil services staff in partnering districts
- ✓ Increase the pipeline for certified school psychologists, school social workers and school counselors with 12 partnering UW programs



Project Outcomes in Partnering Districts

- ✓ **348** pupil services staff hired in partnering districts since 2021-2022
- ✓ **14.3%** reduction in ratio of students to pupil services staff. Currently 165 students to 1.0 full-time equivalent pupil services staff
- ✓ **19%** increase of Black, Indigenous, Persons of Color (BIPOC) in pupil services positions

Project Outcomes in Partnering UW Programs

- ✓ **9** UW Programs enrolled **487** new students seeking certification in pupil services careers in Year 3 and Year 4
- ✓ **219** pupil services staff across WI enrolled in one of five free virtual professional growth programs through UW Milwaukee School Psychology grant partnership in past year

Does your district have an IDEA and/or ESSA identification?

Are you looking for support to strengthen your continuous improvement efforts?



TECHNICAL ASSISTANCE
**Network for
Improvement**

CESA-based TA Network teams provide no cost, ongoing, and embedded continuous improvement supports to districts and schools with improvement requirements based on ESSA and/or IDEA identifications.



To learn more, reach out to your CESA's TA Network team contact today!

Benefits of engaging with your CESA's TA Network team:

- Access to regional continuous improvement experts
- Assistance with evaluating systems
- Support for data inquiry, needs assessments, root cause analysis, and improvement strategy selection
- Development of continuous improvement and implementation plans
- Regular progress check-ins
- Hands-on technical assistance to address DPI monitoring requirements
- Facilitation of leadership team meetings
- Networking with other districts
- And more!

WESP-DHH Outreach Services



- Request a consultation
- Deaf Mentor Program
- Parent Mentor Program
- Request a training or professional development for your district or CESA



<http://wesp-dhh.wi.gov/outreach/>

Lunch Keynote

Please make sure to be back in your seats by 12:15 p.m. so our keynote with Rebecka Peterson can begin on time with limited disruptions.

Thank you!

Prepare for Dec 10 Data Snapshot

A snapshot is taken on a predetermined date to capture the data that exists in WISEDash at the time of the snapshot.

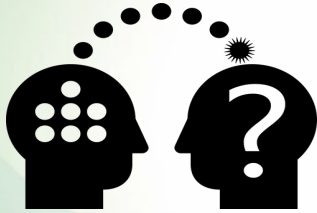
Special education uses this snapshot in funding formulas and for federal reporting requirements.

Please work with your district's data manager to ensure that your district is submitting quality data.

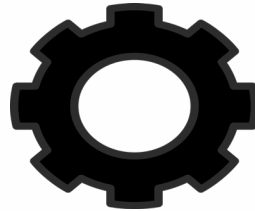


The Compassion Resilience Toolkit

A free, online toolkit that utilizes a tier-one approach to addressing individual and systemic barriers to staff well-being.



Creating a shared understanding of compassion, fatigue, and resilience.



System and team-level strategies for building a compassionate culture.



Individual strategies for building resilience skills.

For training and COP Opportunities visit wisheschools.org.
Find the toolkit at compassionresiliencetoolkit.org.

Assistive Technology Forward



Assistive Technology Forward

- Community of Practice
- Monthly Newsletters
- Micro-credential program
- Assistive Technology Lending Center (ATLC)
- Statewide AT Lending Resource Map
- Accessible Educational Materials (AEM) Center

From AT Beginning to Expert!

[Wisconsin Assistive Technology Forward](#)

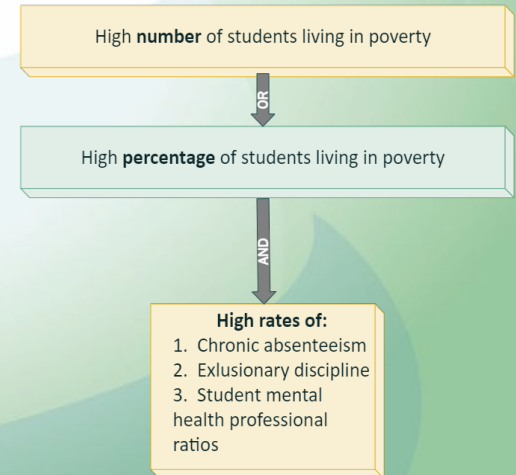
Stronger Connections Grant

Authorized under the Bipartisan Safer Communities Act 2022

- One time funding: Project Period **2/1/2024-9/30/2026**
 - For the purpose of providing competitive subgrants to high needs LEAs to:
 - Establish safe, healthy and supportive learning opportunities and environments for students.
-
- 40 LEAs awarded \$11.8 million in funds.
 - Grantee Community of Practice
 - October – Mental Health Support
 - January – School Safety and Chronic Absenteeism
 - April – Social Emotional Learning

For grant information and application see the [Stronger Connections webpage](#)

Stronger Connections Competitive Grant Eligibility



Inclusive Strategies to Address Behavior Needs of Students with IEPs

Resources for regional or district trainings on the following topics:

- [Data to Spotlight Disparity](#)
- [The Impact of Behavior, Bias, and Adult Practice](#)
- [The Importance of Strong and Healthy Relationships](#)
- [Proactive and Positive Behavioral Interventions and Supports: Why They Work](#)
- [Strategies to Change Mindsets: How Adults Proactively Prepare for Behaviors that Interfere with Learning](#)
- [Establishing Adult Practices to Support Students with Social and Emotional or Behavioral Needs](#)
- [Instruction, Support, and Opportunities to Learn, Improve, and Generalize Skills](#)
- [The Response Cycle](#)
- [Prevention and De-escalation of Intense Behavior Responses: What Adults Can Do](#)
- [Supporting Resources](#)

For more information go to the [Inclusive Strategies to Support Behavior Needs of Students with IEPs webpage](#)

Lunch Keynote

Please make sure to be back in your seats by 12:15 p.m. so our keynote with Rebecka Peterson can begin on time with limited disruptions.

Thank you!

Trauma Sensitive Schools Online Professional Development System

Trauma Sensitive Schools (TSS) Online Professional Development System



Intro to the Trauma Sensitive Schools: Professional Developm...

Copy I

Wisconsin's TSS Online Professional Development System



MORE VIDEOS



0:01 / 1:36



WISCONSIN DEPARTMENT OF
PUBLIC INSTRUCTION
Helping Every Child Succeed



YouTube



Learning Modules

Modules focused on one aspect of developing a TSS

Supplemental Readings

Supplemental resources to expand knowledge

Implementation Tool

Ready-made tool to use in classrooms

- Foundations
- Strategies and Practices
- Systems and Policy Approaches

[Online Professional Development](#)

Co-Teaching In Wisconsin

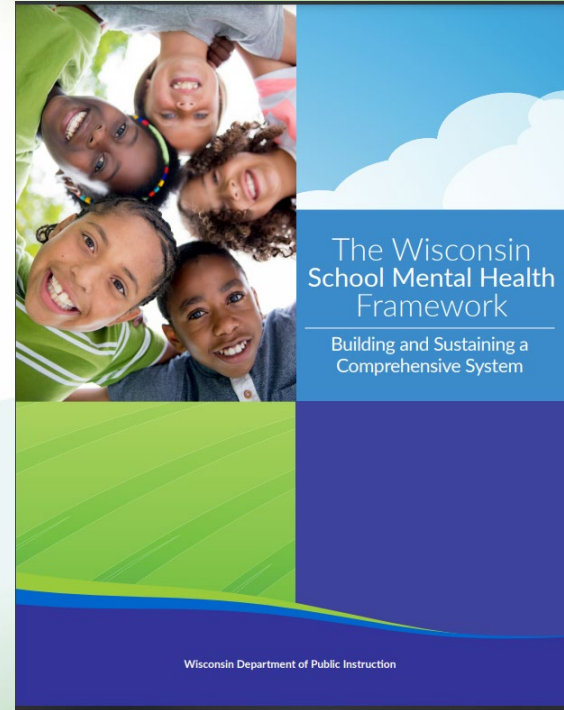
Visit the webpage for information about Co-Teaching.

- Learn about best practices
- Complete learning modules
- See additional resources



Wisconsin School Mental Health Framework

- Outlines a common language and approach to implementing a system for coordinating and delivering school mental health services with the goal of increasing health and educational equity
- Provides district examples of the six components of Comprehensive School Mental Health Systems (CSMHS).
- Contains resources for getting started with improving existing mental health supports.
- Visit the [Wisconsin School Mental Health Framework website](#).

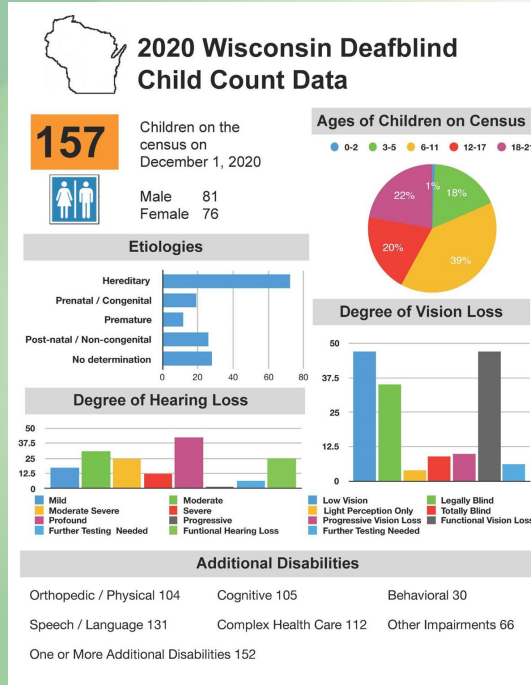


Roadmap for School Mental Health Improvement

- Outlines a 5-stage process for engaging in continuous quality improvement
- Uses the principles of Improvement Science, which is an approach to problem solving that focuses on learning by doing
- Includes a checklist of actions steps, equity checks, and helpful resources for each stage
- Visit the [Roadmap for School Mental Health Improvement](#) webpage to find the document and related tools.



WI Deafblind Technical Assistance Project (WDBTAP)



WDBTAP is a resource to families, agencies, and schools supporting infants, children and youth ages birth to 21 with combined vision and hearing loss.

Benefits of Properly Identifying Students as Deafblind Include:

- Accurately identify the student's disability and its impact
- Being in alignment with IDEA - consistency when moving between schools, districts or states
- Students who are deafblind may be eligible for additional support or services including an intervener
- Eligible for federally funded supports through the Wisconsin Deafblind Technical Assistance Project

<http://wesp-dhh.wi.gov/wdbtap/>

Supporting Neurodiverse Students



Come join us in the learning in how to support our neurodiverse learners



In-Person
Trainings



Deep Dive
Modules



Quick Byte
Videos



Virtual
Trainings



Tool Kit

[Supporting Neurodiverse Learners Webpage](#)

Contact kberg@cesa1.k12.wi.us for questions.

Lunch Keynote

Please make sure to be back in your seats by 12:15 p.m. so our keynote with Rebecka Peterson can begin on time with limited disruptions.

Thank you!

Transition Improvement Grant

TIG is excited for the new school year! Visit our [website](#) to review our professional learning options for the 2024-25 school year.



Wisconsin Statewide Parent-Educator Initiative

Develop Strong Relationships / Build Effective Partnerships

Building and supporting the capabilities, confidence, and connections of families and educators.

Resources for Engaging Families

- ❑ [Family Engagement and Authentic Partnerships](#)
- ❑ [Family Efficacy](#)
- ❑ [Learning Opportunities](#)
- ❑ [Videos & Podcasts](#)
- ❑ [Spanish Resources](#)



Wisconsin Statewide Parent Educator Initiative



Contact Cheri Sylla
at Csylla@cesa1.k12.wi.us with questions.

New to Schools Bootcamp for OTs, PTs, and SLPs

Are you an SLP, OT, or PT professional with 5 or fewer years of experience working in a school setting? Whether you are a new graduate or shifting job settings, this series is for you! From federal and state regulations to comprehensive evaluations and evidence-based, best practices, this series will prepare early career and new to school professionals for school-based service delivery. [Click on the SLP-OT-PT Bootcamp Flier](#) for more information and registration.

Join the UDL Forward Community



UDL

Wisconsin Universal Design for Learning

udlforward.community

Lunch Keynote

Please make sure to be back in your seats by 12:15 p.m. so our keynote with Rebecka Peterson can begin on time with limited disruptions.

Thank you!

Inclusive Practices for Speech/Language

Follow the QR code or click the link to watch the presentation on Evidence-Based Practices for Inclusive Practices related to Speech/Language



[Link to video](#)

Best Practices For Students With Significant Cognitive Disabilities

This Workshop Includes:

- DLM Assessment Administration training
 - Increased understanding of best practices of:
 - Instruction
 - IEP writing
 - Progress monitoring
 - Access to Instructional Resources
- [Additional information and registration at CESA 6 location](#)
 - [Additional information and registration at CESA 5 location](#)



CESA₆
SMART THINKING.

Resources for Health and Safety for Students with Disabilities

[Resources for Health and Safety for Students with Disabilities](#)

Free state and national resources for educators to incorporate into instruction including:

- Sexual education
- Rights
- Healthy Bodies

Accessible Educational Materials (AEM)

New DPI [Accessible Educational Materials Webpage](#)

- Links to Wisconsin AEM Center and WCBVI Book Request
- AEM Decision Tree
- AEM Next Steps
- Legal Requirements
- Additional State and National Resources

Lunch Keynote

Please make sure to be back in your seats by 12:15 p.m. so our keynote with Rebecka Peterson can begin on time with limited disruptions.

Thank you!

New to Schools Bootcamp for OTs, PTs, and SLPs

Are you an SLP, OT, or PT professional with 5 or fewer years of experience working in a school setting? Whether you are a new graduate or shifting job settings, this series is for you! From federal and state regulations to comprehensive evaluations and evidence-based, best practices, this series will prepare early career and new to school professionals for school-based service delivery. [Click on the SLP-OT-PT Bootcamp Flier](#) for more information and registration.

Family Voices of WI Transition Fact Sheets



Wisconsin Integrated Transition Planning Project

University Center for Excellence in Developmental Disabilities



[Family Voices of WI](#) has created a series of fact sheets for families of youth with intellectual or developmental disabilities. The fact sheets were developed in partnership with the Wisconsin Integrated Transition Planning Project. [Visit the WITPP to view or print the fact sheets.](#)

Wisconsin Collective for Comprehensive Assessment

Our goal is to support Speech-Language Pathologists' implementation of comprehensive evaluations to design individualized educational programs that promote students' access, engagement, and progress in age or grade-level curriculum, instruction, and environments. Applications for the next cohort of school districts will open in 2025. For more information visit the [WisCCA website](#).



Transition Improvement Grant

The Transition Improvement Grant welcomes transition educators and administrators to the new school year!

[This year Postsecondary Transition Plan \(PTP\) Tips](#) resource is now available. This document provides the PTP application user information around compliance, PTP report guidance, and problem-solving strategies.

[Visit our website](#) to review our professional learning options for the 2024-25 school year.



Lunch Keynote

Please make sure to be back in your seats by 12:15 p.m. so our keynote with Rebecka Peterson can begin on time with limited disruptions.

Thank you!