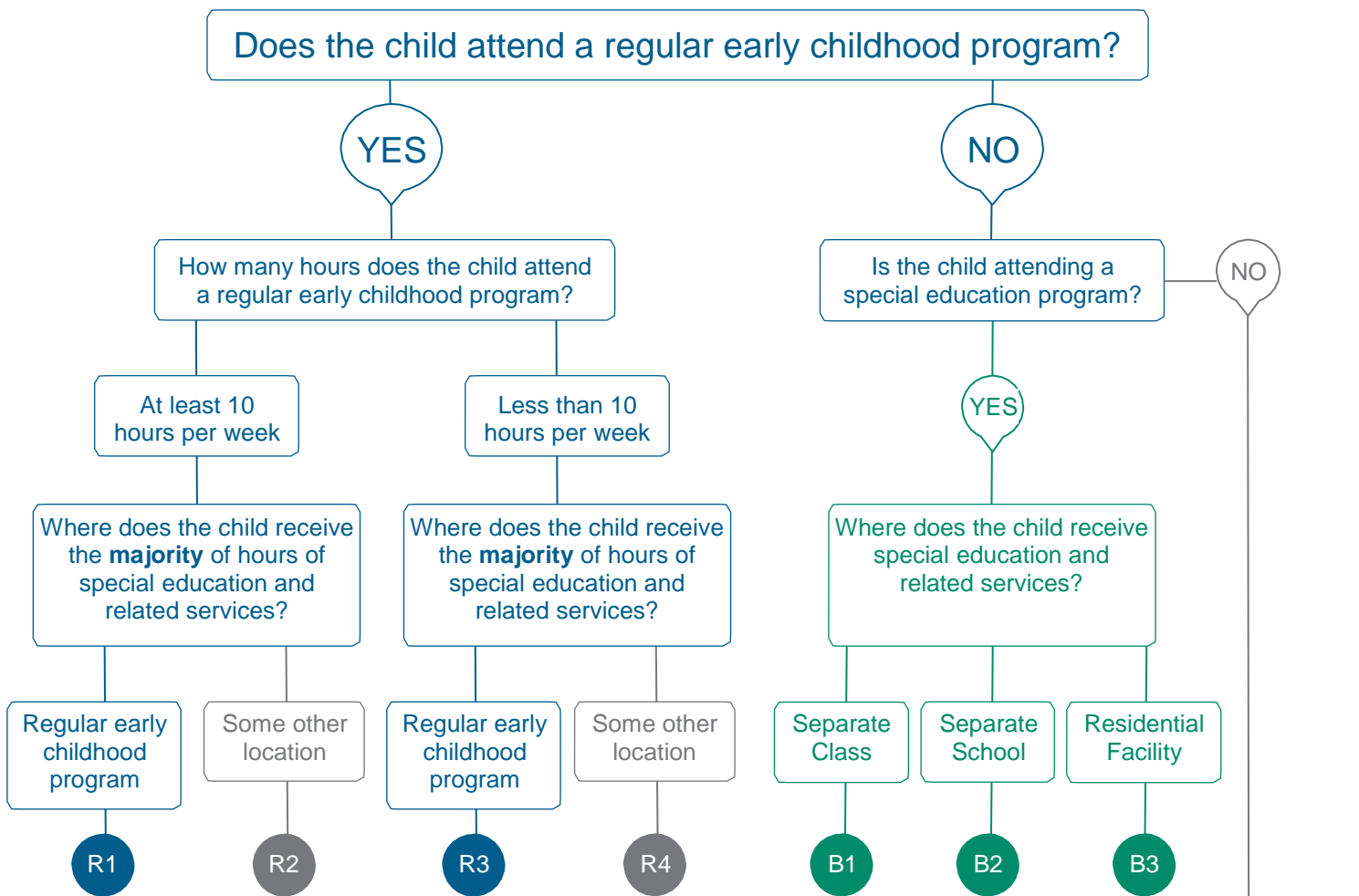


Decision Tree for Reporting Educational Environment for Children Ages 3-5



*Definitions

Regular Early Childhood Program is a program that includes a majority (at least 50 percent) of similar-aged nondisabled children (i.e., children not on IEPs). This category may include, but is not limited to:

- 4 or 5 Year Old Kindergarten, (public or private)
- Head Start
- Preschool classes (public or private)
- Group child development center/ child care or family child care

Note: The special education and related services may or may not be provided in this setting.

Special Education Program is a program that includes less than 50 percent of similar-aged nondisabled children (i.e., children not on IEPs). This category may include, but is not limited to:

- Separate Special Education Classes in:
 - Regular school buildings
 - Trailers/Portables
 - Child care facilities
 - Hospital facilities (out-patient)
 - Other community-based settings
- Separate Schools
- Residential Facilities

