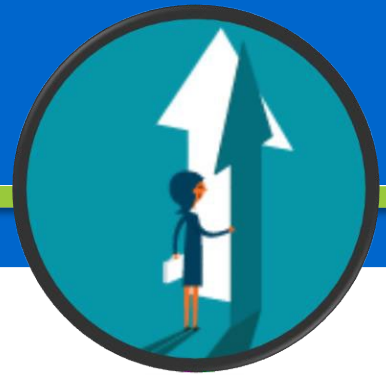


# Mental Health, SEL, Trauma & Safety Online Training Materials

From DPI's Student Services/Prevention and Wellness Team



## Social & Emotional Learning

1. [SEL Homepage](#)
2. [Introduction to SEL online training module](#)
3. [Introduction to Wisconsin's SEL Competencies webinar](#)
4. [Positivity Through Social and Emotional Learning](#) Example of practice, Adams-Friendship
5. [Early Childhood Social and Emotional Learning](#) Example of practice, Racine Unified
6. [Implementation Team Training – Free Registration](#)
7. [Training of Trainers – Free Registration](#)

### SEL Webinars

8. [Getting Started: CASEL Guide to Schoolwide SEL](#)
9. [Social and Emotional Learning: A Foundation for Digital Citizenship](#)
10. [Coaching and Social and Emotional Learning](#)
11. [Integrating WI SEL Competencies with Academic Instruction](#)
12. [Trauma Sensitive Schools and SEL: Universal Approaches to Student Wellness](#)
13. [SEL and PBIS: The Matrix](#)
14. [Assessment and Screening of SEL: Ready to Assess](#)
15. [Using the Wisconsin SEL Competencies to Support IEP Development](#)

### SEL Example of Practice Webinars

16. [Franklin Public Schools: Implementing SEL](#)
17. [Assessing Student SEL Competence](#)
18. [Choosing and Evidence-Based SEL Curriculum](#)
19. [Choosing SEL Competencies of Focus](#)
20. [SEL Evidence-Based Curriculum webinars](#)

## Trauma Sensitive Schools

1. [TSS Homepage](#)
2. [Trauma Sensitive Schools Online Professional Development](#)

# Mental Health

[School Mental Health Homepage](#)

## Suicide Prevention

1. [Suicide Prevention Homepage](#)
2. [School-Based Suicide Prevention Gatekeeper Training eCourse](#)

## Mental Health Examples of Practice Webinars

1. [Developing a Mental Health Referral Pathway](#)
2. [Mental Health Navigation](#)
3. [Supporting Student and Staff Stress and Anxiety](#)

## Counseling Angry and Aggressive Students

1. [Module 1: Understanding the Social-Cognitive Distortions and Deficits of Angry and Aggressive Students](#)
2. [Module 2: Treatment of Anger and Reactive Aggression](#)
3. [Module 3: Critical CBT Insights and Building Generalization](#)

## Continuum of Supports: Targeted/Intensive Practices

1. [Emotional Regulation Planning Introduction](#)
2. Emotional Regulation Planning [PK-2nd grade](#), [3rd-5th grade](#), [Middle and High School](#)
3. [Teacher Care Meetings](#)

## Youth Mental Health First Aid Supplemental Learning Series

1. [Responding to Youth in Crisis Learning Module](#)
2. [Positive Parent Engagement Learning Module](#)
3. [Compassion Fatigue to Resilience Learning Module](#)
4. [Resiliency and Hope](#)

# Adult Compassion Resilience

1. [Advancing Adult Compassion Resilience Toolkit](#)

# Culturally Responsive Practices

1. [Culturally Responsive Problem Solving](#)
2. [Understanding Micro-aggressions](#)
3. [Promoting Excellence for All E-Course](#)
4. [SEL and Equity](#)