

## School Nurse Update 2014-15 #1 Bette Carr, DPI School Nursing Consultant

Hello everyone,

The 2014-15 school year is upon us. Many of you are back at the office preparing for your students; some of you never left! Whichever it is, we are reminded that students will be returning to their classrooms soon!

This year I will be sending out my updates in an email format again, and will also attach the same information via a PDF. I realize that there are many computer systems, and that some of you may have difficulties with being able to access the links if it is only in an email. I hope that will improve your ability to access all the information, as well as being able to place the update in a file folder for later viewing. It will also be placed on our website for later viewing  
[http://sspw.dpi.wi.gov/sspw\\_schnurse](http://sspw.dpi.wi.gov/sspw_schnurse)

## DATA COLLECTION TOOL !!!!

**NEW END OF THE YEAR REPORT FOR WISCONSIN SCHOOL NURSES COMING SOON!**

### Step Up Be Counted!!

Over the years you have probably heard a lot about data collection and how school nurses should be collecting data so that they can show the important difference school nurses make in a child's health and safety. The National Association of State School Nurse Consultants (NASSNC) and the National Association of School Nurses (NASN) have been working collaboratively for several months now to develop an easy-to-use national data collection tool. This tool will be used to collect data at the district level, and then sent on to the state consultant to aggregate the data; the state consultant will submit the aggregated data nationally. This will be a *first time effort* and we will need you all to participate! The tool will be short and sweet, and will replace the former Health Services Report. **It will need to be completed by early June 2015.** We want Wisconsin data to be represented!! Join the NASN call to **STEP UP BE COUNTED** (<http://www.nasn.org/Research/StepUpBeCounted>) Review the NASN website or watch the webinars about the importance of data. Wisconsin school nurses will be helping each other tackle their district specific electronic student information systems, or in developing other collection methods.

Be watching for the new Wisconsin tool which will be coming out soon, and if you haven't already submitted your **2013-2014 data**, please do so as soon as possible so that you don't confuse your new and old data. Here is the link to the old collection report for 2013-2014: <https://forms.dpi.wi.gov/se.ashx?s=56301B2D6C979307> You have until December 31<sup>st</sup> for the 2013-2014 data to be reported, but the sooner the better. The Wisconsin Association of School Nurses will again be offering an incentive to those school district nurses who participate in the report and register for the spring 2015 conference.

## EPINEPHRINE AUTO-INJECTORS:

**2013 ACT 239:** *Use of An Epinephrine Auto-Injector on School Premises or At A School-Sponsored Activity* (<https://docs.legis.wisconsin.gov/2013/related/acts/239/4>).



Under Senate Bill 375, the governing body of a school **may** adopt a physician-approved plan for the management of pupils attending the school who have life-threatening allergies including the training necessary to use epinephrine auto-injectors. A physician, advanced practice nurse prescriber or a physician assistant **may** prescribe epinephrine auto-injectors to be maintained by the school for use if a school has adopted a plan. The governing body of a school that has adopted a plan **may** also authorize a school nurse or designated school personnel to do any of the following on school premises or at a school-sponsored activity:

1. Provide an epinephrine auto-injector to a pupil to self-administer the epinephrine auto-injector in accordance with that pupil's prescription.
2. Administer an epinephrine auto-injector to a pupil in accordance with that pupil's prescription.
3. Administer an epinephrine auto-injector to a pupil or other person who the school nurse or designated school personnel believes is experiencing anaphylaxis in accordance with a standing protocol from a physician, an advanced practice nurse prescriber, or a physician assistant. If that pupil or other person does not have a prescription for an epinephrine auto-injector, the person administering the epinephrine auto-injector must, as soon as practicable, dial "911" or in an area where "911" is not available, the telephone number for an emergency medical service provider.

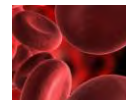


This act takes effect on April 10, 2014 the day after the act's publication date (Wisc. Stat. sec. 118.2925).

## MEDICATION ADMINISTRATION TRAINING:

Many of you are now using the TRAIN system for medication training. The assessments in some of the TRAIN modules have been changed, and all of the assessments now allow 3 attempts and the use of an "Open Book" if needed. We hope that this reduces the stress that some were feeling when taking the assessments. Nasal and buccal seizure medication training videos will soon be available, also. Follow the directions on the DPI medication training page on how to access TRAIN and its modules. For questions please email Bette, [bette.carr@dpi.wi.gov](mailto:bette.carr@dpi.wi.gov) or Freddi Adelson, [Freddi.adelson@dpi.wi.gov](mailto:Freddi.adelson@dpi.wi.gov)

## BLOODBORNE PATHOGEN TRAINING AVAILABLE:



A new bloodborne pathogen training option is available for you to access on the DPI website [http://sspw.dpi.wi.gov/sspw\\_snttraining](http://sspw.dpi.wi.gov/sspw_snttraining) . Use Google Chrome for best viewing. Please try it out and see if it is something that your district can use as part of its BBP training. You will need to add your district specific information when talking with your staff and have a BBP

knowledgeable person available for questions. It can also be accessed on an iPad by downloading the free Articulate Storyline App.

## NEW COMMUNICABLE DISEASE WALL CHARTS:

The WI Department of Health Services has revised the Wisconsin Childhood Communicable Disease Wall Chart. It is now brightly colored in categories and gives updated information on common childhood diseases. If you have not received a new wall chart yet, contact your local/county public health department. The charts were recently distributed to public health departments for dissemination to school nurses. This is an excellent opportunity for you to contact your public health nurses. Working with your local public health department to prevent childhood illness and disease is so important! What a wonderful resource!! The new wall chart is not available online yet, but you can access fact sheets on the DHS website:

<http://www.dhs.wisconsin.gov/communicable/index.htm>

Here is the link to help you find your closest health department:

<http://www.dhs.wisconsin.gov/localhealth/>



\*\*\*\*\*

## JOB OPPORTUNITIES

**Holmen School District is looking for a full-time elementary school nurse!**

Here is a link to the website employment page. The School Nurse position is under the "Permanent Positions" link.

<http://www.holmen.k12.wi.us/Page/71>

If interested, you will need to apply through **WECAN #66429**. For questions call the Human Resources Department at (608) 526-6610

\*\*\*\*\*

## PROFESSIONAL DEVELOPMENT OPPORTUNITIES

### **Healthy Learners: Primary Care and School Collaborations**

Join school nurse colleagues and others at the Pediatric Grand Rounds at the UW Health Sciences Learning Center (Room 1345), 750 Highland Ave or watch live at **7:30 am on September 4** at <http://live.videos.med.wisc.edu>

**Healthy Learners: Primary Care and School Collaborations speakers:** Lori Anderson, PhD, MS, Assistant Professor, University of Wisconsin School of Nursing; Timothy Chybowski, MD, Clinical Professor, University of Wisconsin Department of Pediatrics; Kathleen Kelly Shanovich, NP, Senior Clinical Nurse Specialist, University of Wisconsin Department of Pediatrics; Robert F. Lemanske, MD, University of Wisconsin Department of Pediatrics; Sara Parrell, School Nurse,

Madison Metropolitan School District; **Sally Zirbel-Donisch**, Health Services Coordinator, Madison Metropolitan School District.

The presentation will be also be recorded and archived for later viewing. The link to the archives is on the same page as the live link (<http://live.videos.med.wisc.edu>.) It takes about a week for presentations to be posted to the archives. For questions, please contact Freddi Adelson, [Freddi.adelson@dpi.wi.gov](mailto:Freddi.adelson@dpi.wi.gov)

\*\*\*\*\*

## ***2014 Immunization Symposium***

The Milwaukee Health Department's ***2014 Immunization Symposium*** will be held on Thursday, September 25, 2014 at the Italian Conference Center, which is located adjacent to the Summerfest grounds on Milwaukee's lakefront. **Admission is \$10.00.**

The opening speaker for this year's Symposium is JoEllen Wolicki, a nurse educator from the Centers for Disease Control and Prevention. This year, JoEllen will deliver the presentation, ***"Challenges of Staying Up-to-Date with Ever-Changing Immunization Recommendations."*** The featured speaker at the 2014 Immunization Symposium is Dr. Earnestine Willis. Dr. Willis is a pediatrician who is affiliated with the Medical College of Wisconsin and Children's Hospital. She is a champion of immunizations and is the current Chairperson of the *Immunize Milwaukee!* coalition. Dr. Willis will discuss **CHIMC, Community Health Improvement for Milwaukee's Children**. The intent of the CHIMC project is to decrease disparities in childhood immunization rates in the City of Milwaukee.

If you are interested in attending this year's event, go to <http://bit.ly/2014Imms> to register and submit payment on-line. **Registration and payment must be received by Monday, September 15, 2014.** Please feel free to share information about the *2014 Immunization Symposium* with all healthcare professionals who provide immunization services. Thank you for your consideration!

Mary Ann

Mary Ann Kiepczynski, RN, BSN, MAPS  
City of Milwaukee Health Department  
Disease Control & Environmental Health  
Public Health Nurse Immunization Program Coordinator  
Zeidler Municipal Building  
841 North Broadway, First Floor  
Milwaukee, WI 53202  
Office: (414) 286-8482  
[MKIEPC@milwaukee.gov](mailto:MKIEPC@milwaukee.gov)

\*\*\*\*\*

## OCTOBER 6<sup>TH</sup> WI MENTAL HEALTH IN SCHOOLS

Waukesha County Technical College in Pewaukee

On October 6th, the American Council for School Social Work (ACSSW) is hosting its 2nd multi-disciplinary WI Mental Health in Schools Institute designed for school mental health providers-- particularly school counselors, school nurses, school psychologists, and school social workers-- as well as interested school administrators and community mental health professionals who work in/with schools. There is a reduced fee for three or more persons from the same school, district, or agency. Please know that as leaders in WI School Mental Health you are cordially invited as well!

Additional information is available here: [ACSSW Mental Health in Schools Institute Brochure](http://acssw.org/conference/2014/MILWAUKEE/WAUKESHA14.pdf),  
(<http://acssw.org/conference/2014/MILWAUKEE/WAUKESHA14.pdf> )

Regular registration fee is \$130 through September 23rd and includes lunch and materials. Reduced fees are available for teams of three or more people from a school, district, or agency. On-line registration only at: [Register today](http://www.acssw.com/?utm_source=May+22%2C+2014&utm_campaign=newsletter+29+13-14&utm_medium=email)

([http://www.acssw.com/?utm\\_source=May+22%2C+2014&utm\\_campaign=newsletter+29+13-14&utm\\_medium=email](http://www.acssw.com/?utm_source=May+22%2C+2014&utm_campaign=newsletter+29+13-14&utm_medium=email)) Seating is limited. Questions? Contact Sally Carlson at: 414-659-5853 or [sally.carlson@acssw.org](mailto:sally.carlson@acssw.org)

\*\*\*\*\*

## School Nurse Conference:

### ***Autism Spectrum Disorder (ASD)***

**Date: Friday, October 17, 2014**

**Wisconsin Association of School Nurses, District 6 invites you to participate!**

Time: 8:30 a.m. – 3:25 p.m.

Location: WCTC, 800 Main Street, Pewaukee WI, Richard T. Anderson Education Center, College Center

Cost: \$69.00 (lunch included)

**To Register:**

CRN: 11987

Register on the web: [www.wctc.edu](http://www.wctc.edu)

Operator Assisted Registration: 262-691-5578

Toll Free Registration: 1-877-INF-WCTC

**WAUKESHA COUNTY TECHNICAL COLLEGE**

\*\*\*\*\*

## **New School Nurse Training: Presented by the DPI and the Wisconsin Association of School Nurses**

November 5-6, 2014  
Crowne Plaza Hotel, Madison, WI

Call Bette Carr, school nurse consultant, with any questions: 608-266-8857  
Registration: <https://www.regonline.com/2014newschoolnursetraining>

\*\*\*\*\*

## **SAVE THE DATES: August 5-6<sup>th</sup>, Crowne Plaza Hotel, Madison, WI SCHOOL NURSE SUMMER INSTITUTE 2015**

SBIRT Training: Evidence based practice on how to approach students to encourage specific behavior changes  
Screening, brief intervention, referral to treatment  
Two day event, must be present for both days.

For a brief description of SBIRT in schools see the link below:  
<http://www.wishschools.org/resources/schoolsbirt.cfm>

\*\*\*\*\*

## **SCHOOL NURSE RESOURCES**

### **ASTHMA RESOURCES**

As we approach the beginning of the school year, I am hoping to remind school nurses around the state about the FREE resource available to them and their families from the American Lung Association in Wisconsin.

*Living with Asthma: Families Speak* is a 20-minute video that describes asthma, symptoms, triggers, medications, and impact on family life. Real Wisconsin families are featured throughout the video, and it's a great resource to send home to parents of children with asthma.

The DVD can be ordered online at <http://www.lung.org/associations/states/wisconsin/events-programs/living-with-asthma-families-speak.html> -- copies are available for you to use in your office *and* to hand out to families for them to keep.

Katie Halverson  
Coordinator | Respiratory Health & [Spark](#)  
American Lung Association in Wisconsin  
13100 W. Lisbon Rd. | Suite 700 | Brookfield, WI 53005  
tel: 262.703.4836 | fax: 262.781.5180  
Lung HelpLine: 1.800.LUNG.USA  
[www.LungWI.org](http://www.LungWI.org) | [Katie.Halverson@Lung.org](mailto:Katie.Halverson@Lung.org)

\*\*\*\*\*

# Transforming School Health: **Your Back-to-School Toolkit**

The **National Association of School Nurses** has updated its Back-to-School Toolkit for the 2014-15 school year with new learning links and checklists - one specific for **parents/guardians** and another specific for **school nurses**. In addition, look for links to new resources and tools, school nurse forums, continuing education opportunities, advocacy models and guides, press release, and NASN bookstore items. Click here for the updated NASN Back-to-School Toolkit: [<http://nasn.org/ToolsResources/BacktoSchoolToolkit>]

\*\*\*\*\*

## *“The Burden of Suicide in Wisconsin: 2007-2011”*

As Injury and Violence Prevention Coordinator for the Wisconsin Department of Health Services, I am pleased to announce the publication and availability of a newly released report entitled: *“The Burden of Suicide in Wisconsin: 2007-2011.”* Available now for [download](http://www.dhs.wisconsin.gov/publications/P0/p00648-2014.pdf), (<http://www.dhs.wisconsin.gov/publications/P0/p00648-2014.pdf>) the report was a joint effort of the Department along with the Injury Research Center at the Medical College of Wisconsin (MCW) and Mental Health America of Wisconsin.

Some key findings from the report include:

- The highest rate of suicide during this time period was among persons between the ages of 45 and 54.
- Teens and young adults had the highest rates of hospital visits for self-inflicted injuries.
- Whites and American Indians had the highest rates of suicide; yet high school students of racial and ethnic minority backgrounds were more likely than their White peers to report suicidal thoughts or behaviors.
- Lesbian, gay, and bisexual teens were more likely to report poor mental health, suicidal thoughts, and suicidal behaviors than their heterosexual peers.

Of the suicides with known circumstances, 51 percent had a current mental health problem, 35 percent had problems with an intimate partner, 26 percent had an alcohol problem, 23 percent had physical health problems, and 21 percent had job problems.

Hank Weiss PhD, MPH, MS  
Injury and Violence Prevention Program Coordinator  
DPH/BCHP/Family Health Section - Wisconsin Department of Health Services  
1 West Wilson Street Rm 233, Madison, WI 53703  
(Post: PO Box 2659, Madison, WI 53701)  
[Harold.Weiss@wi.gov](mailto:Harold.Weiss@wi.gov)  
O: (608) 266-3008

\*\*\*\*\*

American Academy of Pediatrics, Wisconsin Chapter  
**HPV Vaccine Safety Information and Guidance, Dr. James Conway**  
**Routine HPV Vaccine prevents cancer, see resource:**

[https://www.wiaap.org/news-media/news/?ID=238&utm\\_source=2014+August+11+HPV+Vaccine+Safety&utm\\_campaign=2014+August+11+HPV+FAQs&utm\\_medium=email&nfstatus=401&nftoken=00000000-0000-0000-0000-000000000000&nfstatusdescription=ERROR%3a+No+local+token](https://www.wiaap.org/news-media/news/?ID=238&utm_source=2014+August+11+HPV+Vaccine+Safety&utm_campaign=2014+August+11+HPV+FAQs&utm_medium=email&nfstatus=401&nftoken=00000000-0000-0000-0000-000000000000&nfstatusdescription=ERROR%3a+No+local+token)

\*\*\*\*\*

**HEALTH INSURANCE LINKS FOR HELPING FAMILIES GET HEALTH COVERAGE:**

While the enrollment period for applying through the Insurance Market Place won't open until November, some families may qualify for BadgerCare/Medical Assistance or CHIPS. Here is a link to some material you could distribute to families interested in information about BadgerCare and Medical Assistance:

[http://www.insurekidsnow.gov/professionals/back\\_to\\_school.html](http://www.insurekidsnow.gov/professionals/back_to_school.html)

And here's a link to some information for families about enrolling through the Marketplace this fall:

<http://e4healthwi.org/consumer-outreach-education-materials/>

And a flyer you could use:

[http://ckfwi.org/documents/SEP\\_poster\\_Wisconsin.pdf](http://ckfwi.org/documents/SEP_poster_Wisconsin.pdf)

For information on *Health Insurance Options for Immigrants* go to the following homepage for Covering Kids and Families at: <http://www.ckfwi.org/>

Thank you Laura Simonds, Columbia Co., and CKF for providing information.

\*\*\*\*\*

**Genetics Education Materials for School Success**

The aim of GEMSS is to assure all children with genetic health conditions succeed in school-life

<http://www.gemssforschools.org/>

\*\*\*\*\*

**NEW NUTRITION STANDARDS**

While the USDA has traditionally regulated the lunch and breakfast meals through the National School Lunch Program and School Breakfast Program, effective July 1, 2014 they have established nutrition standards for all foods sold in schools. This applies to food and beverages sold on the school campus, during the school day (defined as the time from midnight before the school day until 30 minutes after the instructional day), that are consumed by students. While it



doesn't apply to areas like teacher's lounges where students do not have access to, it does apply to vending machines, school stores, and organization fundraisers if the three parameters described above apply. The USDA has established General Standards and Nutrient Standards for these items. For more information go to: [http://fns.dpi.wi.gov/fns\\_smartsnacks](http://fns.dpi.wi.gov/fns_smartsnacks)